

DAIRYMEN WANT RECOMPENSE FOR FULL COWS KILLED

Declare Entire Loss in Cases in Which Diseased Cattle Are Slaughtered Should Not Fall Upon Them; Favor Test.

Dairymen enthusiastically support the plan for compulsory statewide tuberculosis test of dairy cows. They say it will solve the problem of how best to eradicate consumption among dairy herds of the state.

In order to keep his herd free from disease he will have to keep their surroundings clean. This will mean that dirt will be kept away from milk.

But the dairymen will not support any law that does not provide recompense for the loss of cows found by test to be diseased. Compliance with the law places an almost unbearable burden upon the shoulders of individuals.

The case of John Zoller, Columbia Blough dairymen, is typical of the losses sustained by individuals in complying with the city's anti-tuberculosis ordinance, the scope of which is to be widened by proposed enactment of anti-tuberculosis law at the next session of legislature.

Mr. Zoller had 93 cows, 85 of which, after test, were condemned. Slaughtered under government inspection, 35 of these cows were found fit for beef or edible tallow. Two went into the tank as unfit for any use other than as fertilizer.

Under similar circumstances many dairymen would have been forced to go out of business, despite the fact that any dairymen, with consumption in his herd eradicated, will have better patronage, produce more milk, and spend less for feed.

WOMAN WRITES STORY OF OREGON'S GROWTH

"Oregon: Past and Present," is the subject of a well told and copiously illustrated article by Bessie Guinness Stone, published in the September number of The Simmons Magazine.

SEWAGE RESPONSIBLE FOR TYPHOID FEVER

In response to complaints that unsanitary conditions were causing typhoid fever at Oak Grove, Dr. C. S. White, state health officer, visited the place yesterday. He found that carelessness in the disposition of sewage was responsible for the conditions.

Yawning is caused by a deficiency in the air supply to the lungs.



Baker Electric

FRANK C. RIGGS

2800 1/2 Third and Washington St.



A remarkable photograph of the liner Princess May after she had grounded on a reef off Sentinel Island, 50 miles south of Skagway, Alaska, several weeks ago.

MOSCOW, IDA., MAN TO JUDGE HORSES

W. L. Carlyle Has Been Selected by Hunt Club to Help Award Prizes.

W. L. Carlyle of Moscow, Idaho, has been selected by the Portland Hunt club to judge the draft breeds and wagon classes in the fourth annual livestock show which opens Thursday afternoon in the Oriental building in the Lewis & Clark fair grounds.

Mr. Carlyle judged the drafters at the show in New York last fall. He was also one of the judges of horses at the livestock show at the Lewis & Clark exposition in this city.

There will be a total of 118 exhibitors at the show, and these have entered horses in 720 entries. Many of the exhibitors with one and two animals have decided to enter prizes in two or three and sometimes as many as five events.

Additional cups for prizes are being contributed by local merchants, and the club already has 67 cups to be distributed to the winners in the various events.

Mrs. W. H. Aldrich, Portland, 6 entries; American Express company, Portland, 2 entries; Major F. A. Boudette, Seattle, 7 entries; Biddle, McGrath and Murphy, Portland, 4 entries; Mrs. William Biddle, Portland, 5 entries; Otto Bryman, Portland, 5 entries; William J. Ball, Salem, 3 entries; Douglas M. Burrell, Portland, 1 entry; O. J. Brown, Gresham, 2 entries; Brooke and Nicol, Portland, 2 entries; Lieutenant A. B. Budd, Vancouver Barracks, 13 entries; Lieutenant A. T. Bishop, Vancouver Barracks, 3 entries; F. M. Caldwell, Seattle, 3 entries; Mrs. J. A. Cranston, Portland, 2 entries; H. L. Corbett, Portland, 23 entries; E. E. Cohen, Portland, 2 entries; P. Cronin, Portland, 2 entries; Mrs. H. W. Coe, Portland, 5 entries; Major John Conklin, Vancouver Barracks, 4 entries; H. K. Dent, Portland, 4 entries; W. M. Davis, Portland, 2 entries; A. G. Day, Portland, 2 entries; Dr. Emmet Drake, Portland, 5 entries; Lieutenant A. T. Dalton, Vancouver Barracks, 5 entries; Misses Lucile and Maurice Elrod, Portland, 2 entries; W. G. Eaton, Portland, 2 entries; East Portland riding school, 15 entries; R. L. Evans, Portland, 1 entry; Miss Helen W. Farrell, Seattle, 5 entries; James B. Farrell, Seattle, 5 entries; Clayton Fialla, Portland, 3 entries; Miss Louise Flanders, Portland, 3 entries; Paul E. Froelich, Portland, 4 entries; S. L. Heston, Vancouver, 13 entries; Miss B. Pauline Howe, Vancouver, B. C., 2 entries; T. Hughes, Portland, 1 entry; George H. Howitt, Portland, 5 entries; Dr. Treve Jones, Portland, 2 entries; Mrs. R. E. Jenkins, Portland, 2 entries; Trenton Johnson, Portland, 4 entries; R. H. Jenkins, Portland, 3 entries; Mrs. R. H. Kieren, Portland, 3 entries; Miss Mildred Keata, Portland, 2 entries; Kraemer's Riding school, Portland, 11 entries; W. J. Gilchrist, Seattle, 1 entry; Miss Lura Galbraith, Seattle, 7 entries; Mrs. A. Kyer, Portland, 4 entries; Miss Angela Kinney, Portland, 4 entries; W. B. Linn, Portland, 3 entries; Miss Sally J. Leadbetter, Camas, Wash., 5 entries; Miss Isabel Lawrence, Portland, 4 entries; C. B. Lamont, Portland, 11 entries; Mrs. F. W. Leadbetter, Portland, 23 entries; Miss Georgiana Leadbetter, Portland, 11 entries; Andrew Laidlaw, Spokane, 50 entries; M. Lindsey, Portland, one entry; Maplewood farm, Seattle, eight entries; Chester G. Murphy, Portland, one entry; Marshall Wells Hardware company, one entry; Meier & Frank, Portland, two entries; J. Mason, Portland, two entries; D. C. McGregor, Vancouver, B. C., 13 entries; John McVeigh, Portland, five entries; W. F. McNeil, Gresham, one entry; Mrs. A. W. Nicholson, Portland, one entry; Mrs. James Nicol, Hillsdale, Or., eight entries; Minor Nealson, Portland, two entries; Dr. Robert Perry, Smith, Wash., one entry; Miss Lillian O'Brien, Portland, six entries; Olga Wortman & King, Portland, one entry; Dr. N. W. Pontius, Seattle, five entries; David S. Pattulo, Jr., Portland, two entries; Portland Riding academy, 24 entries; Pacific Hardware & Saddle Co., Portland, one entry; Mrs. W. E. Prudhomme, Portland, three entries; J. P. Porter, Portland, six entries; Riverside Driving farm, Seattle, 53 entries; Mrs. Tom Richardson, Portland, two entries; J. A. Russell, Vancouver, B. C., six entries; W. W. Robinson, Portland, six entries; C. Ruby, Portland, two entries; John H. Richter, Yamhill, Or., eight entries; Seattle Hunt club, two entries; Dr. R. P. Smith, Seattle, four entries; Mrs. R. P. Smith, Seattle, 11 entries; P. F. Schaefer, Portland, two entries; A. E. Stockwell, Portland, five entries; Mrs. B. M. Scholz, Port-

LINER ON THE ROCKS

COMMITTEE FAVORS NELSON FENDER

End of Three Years' Fight Over Device for Streetcars in Sight.

The street committee yesterday recommended that the city council adopt the Nelson automatic streetcar fender, which is not favored by the Portland Railway, Light & Power company.

PORTLAND ENJOYS GOOD VIEW OF MOUNT HOOD

Mount Hood was visible from Portland yesterday, for the first time in several weeks. During the early part of the summer the haze that hung over the landscape prevented a sight of the mountain. Then came the forest fires between the city and the mountain, and the smoke that obscured nearly all objects.

BIG CROWDS ATTEND UNION COUNTY FAIR

La Grande, Or., Oct. 3.—Big crowds are attending each day and night session of the Union county fair this week. A big stock parade followed by an automobile parade are the features for Monday. Religious services will be held Sunday.

Klickitat Teachers Adjourn

White Salmon, Wash., Oct. 3.—The thirtieth annual convention of the Klickitat Teachers' association terminated Thursday after a three days' session in the opera house. Over 90 were in attendance and it was pronounced the most interesting and edifying meeting ever held.

16-HORSE AUTOMATIC GRADER — GRADING, LOADING, TRAVELING



Reasons for the Splendid Results Accomplished in 12 Months at Laurelhurst

The splendid results, unsurpassed on the Pacific coast, if not in the United States, which have been accomplished in ONE YEAR in the mile square Home Park Addition of LAURELHURST are due to the superb combination of nature, in her most lovely aspect; highest artistic skill; the ability to see and grasp an unusual opportunity; the indefatigable energy of the originators of Laurelhurst and the Engineering Department of the City of Portland, and the enormous sum of ONE AND ONE HALF MILLION DOLLARS.

Last of Laurelhurst Now Selling

The last division of this immense tract, the "Southeast Quarter," containing but 450 of the 2290 lots of the entire addition, is now ready for sale and YOUR selection. The prices range from \$1000 upward upon the moderate terms of 10% cash and 9% per month. Many of the most charming locations of the addition are in this last portion, now offered, and will not be long available.

Laurelhurst is located on the East Side of Portland, but a mile and a half from Burnside bridge; a mere 15 minutes' car ride from the business center.

Laurelhurst Co. TELEPHONES: Main 1900, A-1216 Marshall 214 and 215 Mead & Murphy SALES AGENTS 522-506 CORBETT BLDG.

mitted appointed three years ago has held numerous tests and listened to various arguments for and against various fenders. This committee, of which Councilman Lombard is chairman, recommended the fender built by the Portland Railway, Light & Power company.

When the recommendation of the special committee came up before the council, Councilman Deiseok introduced the Nelson fender and asked that all matters pertaining to fenders be turned over to the street committee. The Portland Railway, Light & Power company wanted its own fender adopted by the city. It was through Mayor Simon that word was passed out that the city would be held liable for all injuries, in case the city forced a fender upon the company that did not meet with the approval of the street committee.

MUST PAY ALIMONY EVEN IF HE'S BROKE

Seattle, Oct. 3.—That a man cannot escape the payment of alimony due his divorced wife because he has been declared a bankrupt in the federal court is the decision of Judge Mitchell Gilliam of Seattle. The precedent is established in the order handed down by Judge Gilliam directing Arthur P. Henderson to pay his wife \$100 accrued alimony by October 10, or go to jail for contempt. The fact that Henderson has filed a voluntary petition in bankruptcy does not release him from paying the alimony, the judge decided.

Two Go to Penitentiary

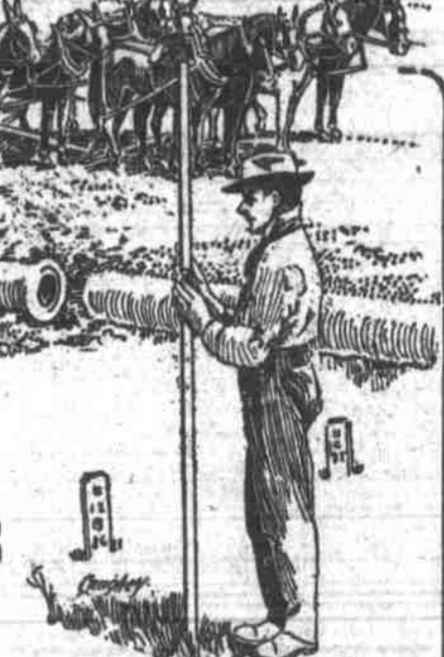
Pendleton, Or., Oct. 3.—V. A. Ryther, sentenced to serve two years in the penitentiary for stealing a horse from the City stables and William Evans, sentenced to serve two years for stealing a number of silk teeth and other articles from an Indian tepee on the reservation, have been taken to Salem by Sheriff Taylor.

NEVER ANY INDIGESTION, DYSPEPSIA OR SICK, GASSY, UPSET STOMACH.

A Little Diapepsin Will Make You Feel Fine in Five Minutes.

Take your sour, out-of-order stomach—maybe you call it indigestion, dyspepsia, gastritis or catarrh of the stomach; it doesn't matter—take your stomach trouble right with you to your Pharmacist and ask him to open a 50-cent case of Pape's Diapepsin and let you eat one 22-grain Triangles and see if within five minutes there is left any trace of your former misery.

16-HORSE AUTOMATIC GRADER — GRADING, LOADING, TRAVELING



Reasons for the Splendid Results Accomplished in 12 Months at Laurelhurst

The splendid results, unsurpassed on the Pacific coast, if not in the United States, which have been accomplished in ONE YEAR in the mile square Home Park Addition of LAURELHURST are due to the superb combination of nature, in her most lovely aspect; highest artistic skill; the ability to see and grasp an unusual opportunity; the indefatigable energy of the originators of Laurelhurst and the Engineering Department of the City of Portland, and the enormous sum of ONE AND ONE HALF MILLION DOLLARS.

Last of Laurelhurst Now Selling

The last division of this immense tract, the "Southeast Quarter," containing but 450 of the 2290 lots of the entire addition, is now ready for sale and YOUR selection. The prices range from \$1000 upward upon the moderate terms of 10% cash and 9% per month. Many of the most charming locations of the addition are in this last portion, now offered, and will not be long available.

Laurelhurst is located on the East Side of Portland, but a mile and a half from Burnside bridge; a mere 15 minutes' car ride from the business center.

Laurelhurst Co. TELEPHONES: Main 1900, A-1216 Marshall 214 and 215 Mead & Murphy SALES AGENTS 522-506 CORBETT BLDG.

WE OFFER QUALITY

In all dental work, the best that can be produced, at the lowest possible quality price. That's all.

BRIDGE WORK—Not the uncertain kind that in a short time may place your mouth in worse condition than when you had the work done, but perfectly balanced bridges without plates, that fit perfectly and can chew any kind of food to your perfect satisfaction.

PLATES that won't disfigure you, won't fall down, to your embarrassment; won't make you wish to do bodily harm to your dentist, but plates that will give you genuine comfort, improve your appearance a thousand-fold and probably last the balance of your life.



Dr. M. S. Bennett, Manager. Dr. B. E. Wright.

READ OUR PRICES:

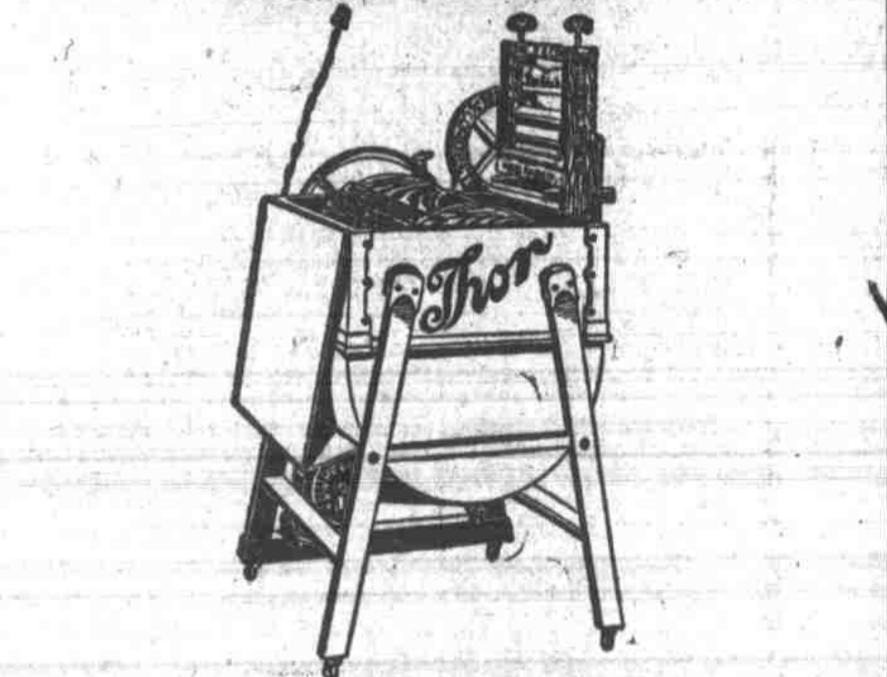
Table listing dental services and prices: 22-Karat Gold or Porcelain Crown for \$5.00, Silver Filling, each and up \$5.00, 22-Karat Bridge Teeth, guaranteed, each \$3.50, Good Rubber Plates, each \$5.00, Gold or Enamel Fillings, each and up \$1.00, Best Red Rubber Plates, each \$7.50.

ALL OUR WORK IS GUARANTEED

DR. B. E. WRIGHT PAINLESS DENTISTS

M. S. BENNETT, Manager. 342 1-2 WASHINGTON ST., Cor. Seventh OFFICE HOURS—8 A. M. to 5 P. M. SUNDAY—9 A. M. to 12 Phons—A and Main 2119. Fifteen Years in Portland

Have Your Own Home Electric Laundry



The THOR Electric Home Laundry Machine will wash your clothes better—in less time—at a lower cost. Washes and wrings at the same time by electricity.

This wonder working machine has solved the servant girl problem in thousands of homes. It will do the week's washing for a family of six to eight in 90 minutes—at a cost of 3c. It is the only machine with a 3-roll reversible wringer.

The clothes are placed inside of the self-reversing cylinder—each time the movement is reversed it spreads the clothes into a new position—so that they cannot possibly pack into a wad. The surface of this cylinder inside and out is polished as smooth as glass—no rough edges, sharp corners, paddles or projections of any kind to tear or fray the clothes. This is the biggest step made in laundering in the last 25 years—no other machine has this big advantage.

The THOR is absolutely sanitary, light running and noiseless—and your clothes will last twice as long. It can be operated from any ordinary electric light fixture. Made in different sizes—adapted for any house or apartment.

Free Demonstration. Call and see the THOR in operation—free demonstration daily. In calling you obligate yourself in no way. At least investigate—NOW.

ELECTRIC STORE, ALDER ST., AT SEVENTH