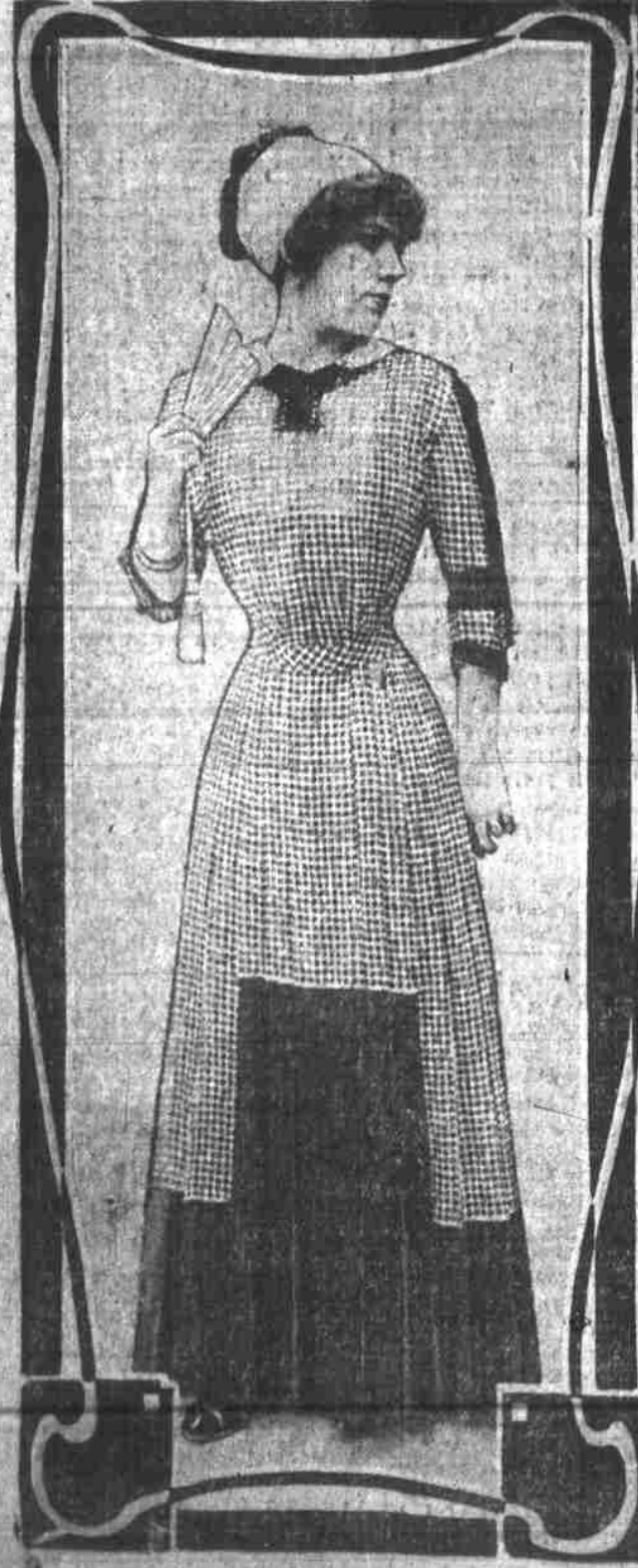


THE DEEP HEM IN REALITY AND EFFECT



With Deep-Hem Line and Pleated

WITH the return of the bordure gown has come also its accompaniment, the deep-hemmed dress. This, whether it is the real hem of different shade or merely an applied deep border of another material, is most striking in appearance and extremely modish.

How effective it may be in simple material and plain cut is shown by the black-and-white linen frock. The black hem here is very deep indeed, reaching almost to the knees, but the chief originality of the costume consists in the fact that the entire dress, from the low-cut vest down, is open by a slashed seam in the front, fastened by hooks and eyes and a row of black linen buttons. The wide collar is edged with black and with a tucked lawn frill, which does not extend to the side lapel. A row of buttons offsets this lapel on the other side of the frilled lawn chemisette with its little bow tie. The black linen belt is caught in front by a buckle strip of the dotted material. The plain, loose sleeves, tucked at the cuffs, are three-quarter length.

A pretty style for summer mornings is shown in the light blue-and-white dotted lawn, with its deep hem of plain blue and its valenciennes lace insertion, cuffs and shallow yoke. Triple bands of the plain blue at yoke, cuffs and girdle go with the severely cut hem.

The white union linen hem of the eyelet-embroidered gown is continued in a pleat up the middle of the skirt, a little to the left, and matched in the broad sailor cuffs. A flat Dutch collar of the English embroidery and a black patent-leather belt complete this simple but dainty frock.

For afternoon wear and informal social occasions is the gray silk crepe, with a deep hem effect (it is, of course, only applied like a border) of liberty satin in a slightly darker tone. The narrow ash and cabochon at the left side, a little above the

Foulard with Darker Hem

Silk Crepe and Liberty Satin

In Black and White Lines

English Eyelet Embroidery

hem and under the crepe train that continues the satin girdle, are of the same gray liberty. The chemisette and the guimpe cuffs are of fine all-over embroidery, with upper cuffs, bandings at yoke and shoulders and knotted jabot of the satin.

Blue-and-white dotted foulard makes the cool short-sleeved and collarless dress, with its hem of plain dark blue foulard. The plain blue appears again in the lace-frilled cuffs, in the girdle and in the falsa bolero effect in the blouse. A frilled lace jabot all the way down the waist gives a finishing touch to this comfortable and pretty frock.

The modified hem line is shown in the green-and-white challis, with the exaggerated irregular hem catstitched to the figured material. The sleeves show cuffbands and side strips of the plain goods, which is continued over the shoulders and in a vest effect under the embroidered Dutch collar, and is trimmed with rows of tiny brass buttons. The tightly fitting belt is of green and white.

Thus pass in procession the deep-hemmed gowns. And—a whispered word: They are often a solution of the remnant and the making-over problems for the economical dresser.