

## LEADERSHIP IN SENATE MAY BE CHANGED IN 1911

Calculations on Probable Outcome of Senatorial Elections Next Year Show Good Prospects for Progressives.

(Washington Bureau of The Journal.)  
Washington, Jan. 22.—That the present Republican leadership of the senate is likely to be unseated, and to lose control of that body after March 4, 1911, is the prediction of many Democrats and progressive Republicans.

The prediction is based on calculations of the probable outcomes of the senatorial elections in 1910. The progressives consider that they are going to make so many gains that while they will have small chance to organize the senate committees two years hence, yet they believe that the Aldrich-Hale forces will no longer hold their majority in the upper chamber, and a combination of Democrats and progressive Republicans will be strong enough in numbers to defeat the organization at critical times.

**Figures Look Encouraging.**  
There are now 32 Democrats and 60 Republicans in the senate. Counting 11 of the Republicans insurgents, the organization has 49 Republican votes on which it can rely. Giving it credit, however, for the two Louisiana senators, it would have 51; but these two would not be potent to control the organization, because they could not enter the Republican caucus, though in matters of legislation they have been cast with the Republicans in the recent tariff session.

On the basis, then, of 49 organization votes, the organization has three more than enough to control the senate. It requires 47 votes, in a full session, to go business. The estimate of 11 insurgents at the present time includes the 10 who last summer voted against the tariff bill, and, in addition, Senator Borah. There is no matter of legislation now in sight on which these 11 could be conceived as working together and in conjunction with the entire Democracy. But despite that, these 11 are regarded as insurgents, and liable to be able in the future to work in general harmony on some propositions looking to overthrow of the present organization.

But assuming that there are seven insurgent Republicans—that is, the seven who stood the test and voted against the acceptance of the conference report on the tariff bill—then the organization has a clear majority of seven over the combination of insurgent Republicans and Democrats. The real question is whether there is a chance of the insurgents and Democrats gaining that many votes.

**Twenty Republicans Out.**  
Twenty Republicans who are classed as regulars will come to the end of their present terms on March 4, 1911. They are Aldrich of Rhode Island, Burleigh of Connecticut, Burrows of Michigan, Carter of Montana, Clark of Wyoming, Depew of New York, Dick of Ohio, Du Pont of Delaware, Flint of California, Hale of Maine, Keen of New Jersey, Lodge of Massachusetts, McCumber of North Dakota, Nixon of Nevada, Oliver of Pennsylvania, Page of Vermont, Piles of Washington, Scott of West Virginia, Sutherland of Utah, and Warner of Missouri.

Of that 20, Burrows, Depew, Dick, Flint, McCumber, Piles and Warner have either hard fights to return, or else are out of the race to succeed themselves. Piles is not a candidate, and his place seems certain to go to Poinexter, insurgent Republican, and a fighting one at that. He is a member of the house, and reports from Washington state are that he will win. Flint has indicated that he will not

be a candidate from California, and the anti-Southern Pacific forces in that state hope to make former Governor Pardee, an insurgent, the next senator. Burrows is reported from Michigan to be likely to lose to Representative Townsend. Mr. Townsend is running in Michigan as an insurgent, but in Washington he has been for a year classified as decidedly regular.

**Depew Wants Back.**  
Senator Depew is understood to be more than willing to succeed himself, but with chances decidedly against him and in favor of some other man equally loyal to the organization succeeding him. Dick has a hard fight in Ohio, and may be succeeded by a progressive. McCumber is commonly regarded as booked for defeat. His present colleague is a Democrat, and his term also will expire in the next year. The next legislature of North Dakota will have two senators to elect, with the chances that Tom Marshall and Representative Gronna, both strong insurgents, will win.

Senator Burkett of Nebraska, who was not one of the seven insurgents at the finish in the tariff bill, and is not now counted an insurgent of the effective type, has a hard fight for reelection, with the chances today decidedly favoring a Democrat succeeding him. Senator Carter has a fight, but it is not so serious as a short time ago, because President Taft has removed the man most menacing to Carter, by naming him to the federal bench—Judge Hunt.

Senator Hale has a fight on his hands, which is attracting much attention in New England, and which his friends regard as serious, though it is not believed here that Hale is in any danger of being beaten.

**Insurgency in Vermont.**  
Likewise there has recently been a most remarkable outbreak of insurgency in Vermont, which is giving most concern to the Republicans of the organization, and might possibly, though not probably, prevent the reelection of Senator Page.

West Virginia is a much more promising state for the Democrats, because the contest there is determined, and the state is not so overwhelmingly Republican.

The general belief is that Sutherland will be reelected in Utah, and that a Democrat will come from Missouri in place of Warner.

Out of the whole compilation of chances, there is considered to be an even opportunity for the Democratic insurgent forces to hold a majority in the next senate.

### WARS DUE TO RICH SAYS MAURICE HEWLETT

London, Jan. 22.—Maurice Hewlett, the novelist, has entered the election fight with a two-column manifesto addressed to "Workmen of England," in which, describing himself as "one of yourselves," he reminds the workers that they form the overwhelming majority of the electorate, and can gain everything they want by two strokes of the pencil in the polling booth.

Mr. Hewlett declares that he intends to vote for a Liberal or a Laborite, because "the house of lords is a preposterous assembly, which must be abolished in favor of an elected body."

He denounces protectionism as the capitalist's policy, because it enables the creation of rings, corners and trusts, "as they have in the United States, and God keep us from such mischief as that."

Mr. Hewlett declares that the monstrosity of the culture for armaments has been maintained solely in the interests of the wealthier classes, "but for whom," he adds, "wars would cease."

### Portland to Seattle and Tacoma Sleeping Cars.

The Pullman sleeping cars for Seattle and Tacoma on the Oregon & Washington owl train, leaving Portland at 11:45 p. m., is at the disposal of passengers after 2:30 p. m. This car may be occupied until 8 o'clock the following morning, thus enabling travelers to obtain a full night's sleep without the loss of an hour.

Reservations and tickets, city ticket office, Third and Washington streets, or Union depot.

Journal want ads bring results.

# First Annual Clearance Sale The Greater Morgan-Atchley Furniture Co.

Over 90 per cent of our furniture, rugs, etc., is absolutely new, bought within the past three months for our new store. No big store in the city has a stock so entirely up to date, and we propose to keep our stock in this condition. We turn our stock over almost as fast as a cook turns pan cakes, but there is all the time odd pieces, broken lines, etc. These we are interested in clearing out,

profit is a second consideration. So we cut the price 25 per cent and cash them in. It will pay you to note the goods listed very carefully. Regularly, our goods have always been priced so very low that in two years we became one of the leading furniture stores in Portland, therefore it is not possible to cut prices in half to give 50% reductions, no matter how badly we wish to clear odd lots.

### \$10 Library Table \$7.50

Solid oak, fumed finish, square top, 36x36 inches. Well made and excellent value.

### \$11.50 Lib'r'y Table \$8.60

Plain oak, golden finish, top 22x36 inches. Just the thing for a small room. Also have this in the Early English finish.

### \$20 Library Table for \$15

Fumed oak, one drawer, top 24x36 inches, good shelf, braced legs. KARPEN MAKE.

### \$24 Library Table for \$18

Quartered oak, Early English finish, top 24x32 inches, five drawers. Neat pattern and a useful article.

### \$32.50 Lib'r Table \$24.50

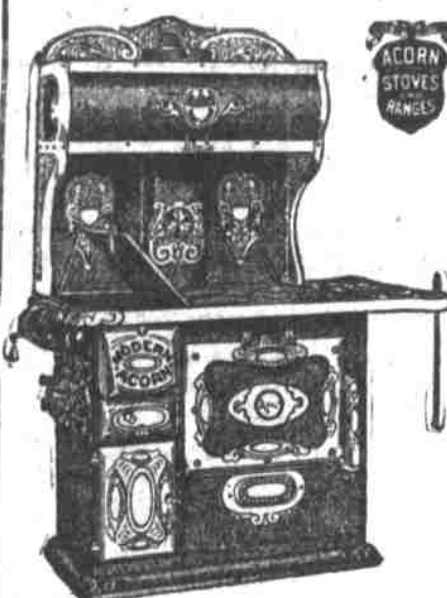
Quartered oak, wax finish, top 30x46 inches. Cadillac make, with desk feature in each end, having ink well, pencil-holders and stationery receptacles.

### \$45 Library Table \$33.75

Quartered oak, golden finish, top 30x48 inches, massive design, one long drawer with small ones on each end. A big beauty.

### \$6 Reception Chair for \$4

Golden oak, saddle seat, carved legs and back posts.



Best  
Ranges  
Reduced  
25  
Per  
Cent

### \$45 Steel Range at \$33.75

This is No. 18 Trojan Banner.

### \$50 Steel Range at \$37.50

This is No. 16 Faultless Banner.

### \$52.50 Steel Range \$39.50

This is No. 18 Faultless Banner.

### \$75 Malleable Range \$56

This range with a reservoir.

All the above Steel and Malleable Ranges have adjustable flue strips to regulate the draft in range to any chimney. They have drop feed doors, long flue boxes, with hot blast features, in each. Pouch feed, nickel guard rail, extension and shelf, deep and high ovens and plain nickel trimmings which are easily kept clean. Warranted 10 years.

### \$42.50 Acorn St'l Range \$31

This range has a reservoir, No. 18.

### \$47.50 Acorn St'l Range \$35.50

The Aurora Acorn, 18-inch oven, reservoir.

### \$50 Acorn Steel Range \$37.50

This is the No. 16 Modern Acorn, the best make. Has reservoir.

### \$55 Acorn Steel Range \$37.50

No. 18 Modern Acorn, reservoir.

### \$55 Acorn Steel Range \$37.50

Victor Acorn, 20-inch oven. Has reservoir.

Acorn Ranges are used by millions. Made by the oldest stovemakers in America. These are extra heavy ranges, warranted for 20 years. Have hot blast firebox, deep feed door, extension and shelf. Oven made of 12-gauge steel and guaranteed not to warp.

## Rugs \$5.95



Little housemaid says what's the use of trying to sweep the dirt out old worn out rugs, or of going to the expense of getting them cleaned when high class new rugs can be bought so cheaply.

\$8.00 SANITARY RUGS, 9x12.....\$5.95  
\$26.00 AXMINSTERS, 9x12.....\$18.95  
\$32.50 AMERICAN ORIENTALS.....\$24.40  
\$2.75 RAG RUGS, 3x6.....\$2.00  
TWO YARD VELVET CARPET REMNANTS, AT.....\$1.90  
TWO YARD BRUSSELS CARPET REMNANTS, AT.....\$1.25  
TWO YARD WOOL INGRAIN REMNANTS, AT.....60¢

### \$36 Leather Couch Selling for \$30.00

Genuine black leather, tufted, leather completely covers frame, claw feet. A rare bargain.

### \$32 Leather Couch \$27

Genuine black leather, tufted, quartered oak frame, golden finish. A neat design and is priced very low at \$27.

### \$32.50 Couch \$24.40

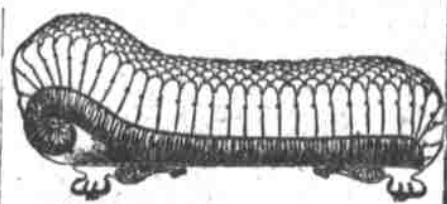
Fabricoid leather, black and smooth, very highest class of imitation leather. Quartered oak frame, golden finish showing all around. Has Greek feet.

### \$9.50 Ideal Airtight Heaters for \$7.00

Cast top, nickel feet and bottom rim and foot rest as well as screw draft. Will take wood two feet long. We have nine of these to be closed out without profit at \$7.00.

### \$14 Box Style Heaters \$10

Has cast top, base and lining. Burns 26-inch stick. Have just one, which is offered at a great bargain.



### \$37.50 Leather Couch Selling for \$31.80

Genuine black leather, tufted and beautifully fluted around edges, claw feet.

### \$23.00 Weathered Hall Tree at Only \$17.00

Solid oak, weathered finish, French beveled plate mirror 16x28 inches, umbrella holder, also chest for rubbers, etc. This is an odd piece, the only one left of its line, and is being offered extraordinarily low—having been priced low to start with.

### \$3.75 Laundry Slove Selling at Only \$2.80

These Laundry Sloves are just the thing for the basement. They can also be used for light cooking, having small base but large tops. We have five to close out at \$2.80.

### \$18.50 China Closet at \$14

Quartered oak, bent glass ends, straight front and three shelves, plain design. A good bargain.

### \$21 China Closet Only \$16

Quarter-sawed oak, bent glass ends and swell front, mirror in back of top piece, three shelves.

### \$32.50 China Closet \$24.50

Quartered oak, golden polish finish, straight front, with small door opening from top shelf only. Mirror back in this convenient upper compartment. Has three shelves in lower part.

### \$38 China Closet Only \$28

Quartered oak, golden polished finish, has mirror in back of top shelf, also has mirror back piece on top shelf of cabinet, bent glass sides and door, four shelves, large and roomy.

### \$22.50 Oak Buffet for \$17

Quartered oak, golden finish, with two small drawers and a large bin, good French plate beveled mirror, very tasty in design.

### \$30 Oak Buffet for \$22.50

Quarter-sawed oak, golden, two small drawers, one linen drawer and a large bin in bottom, good French beveled mirror.

### \$50 Oak Buffet for \$37.50

Early English finish, quartered oak, mission design, glass front, canopy top, large and roomy, size 22x52 inches.

### \$55 Oak Buffet for \$41.50

Early English finish, quartered oak, swell top and straight front below, two small drawers, three French plate mirrors in back. This piece has four small drawers, two small bins and one linen drawer. Excellent design and finest finish. Would ornament any home.

### \$13.25 Dining Table at \$10

Round golden finish, good workmanship, extra values.

### \$15 Dining Table at \$11.25

Solid oak, golden and weathered, round and square, 42-inch top, extends 6 feet.

### \$18 Exten'on Table \$13.50

Square, five square legs, 42x42-inch top when closed, extends six feet, Early English finish. One almost the same in golden finish at the same price.

### \$22.50 Din'g Table \$16.90

Solid oak, golden finish, round pedestal base, neatly veneered, claw feet.

### \$24 Dining Table for \$18

Quartered oak, golden finish, five large round legs with claws on bottom, 45-inch top, six feet extension.

### \$11.50 Roman Seat \$8.50

Quartered oak, golden finish. A neat hall or reception piece.

### \$12.50 Roman Seat for \$9

Quartered oak, early English finish, slatted back, tasty design, beautifully finished.

### \$1.75 Green Rocker for \$1

Cane seat, slightly damaged and offered below cost.

### \$15 Iron Bed for Only \$11

Massive style, white, three-quarter size.

### \$18 Iron Beds for \$13.50

Square post and square filler, white, full size. A very pretty bed, with metal castings.

### \$50 Princess Dresser \$37.50

Golden oak, quarter-sawed, French bevel plate mirror 24x42 inches. This is a real handsome piece of furniture and of the best workmanship. Is low at the regular price.

## Union Dentists

Specialists in Painless Dentistry

We keep in our employ only dentists of practical experience, who have spent years of study in preparing themselves in all branches of dentistry. When people visit Portland from out of town, they must take advantage of the opportunity and have their dental work attended to. The Union Dentists have a full corps of old, time-tried crown and bridge workers and painless extractors. And don't forget our prosthetic dentist in making up your mind where to go.

Written Guarantee on All Work For 15 Years



### SPECIAL PRICES

Best Red Rubber Plates, each.....\$7.50  
Painless Extracting (local anesthetic).....50¢  
22k Gold Crowns (molars).....\$5.00  
22k Gold Crowns (bicusps).....\$4.00  
22k Gold or Porcelain Crown.....\$3.50  
22k Bridge Teeth (guaranteed), each.....\$3.50  
Gold or Enamel Fillings, each.....\$1.00  
Silver Fillings, each.....50¢  
Inlay Fillings of all kinds, each.....\$2.50  
Whalebone Plate.....\$10.00  
Good Rubber Plates, each.....\$5.00  
Painless Extracting (with somnoform).....\$1.00

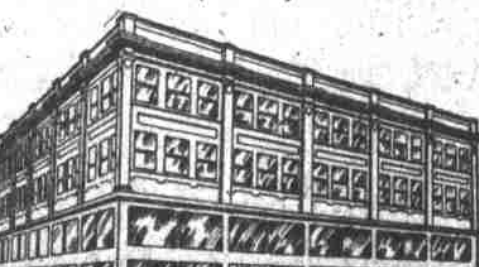
## Union Painless Dentists

Phones, Main 5936, A-2132. Cor. First and Morrison.

W. L. Morgan, Pres. Geo. T. Atchley, Sec. S. H. Morgan, Vice-Pres.

OUR OWN (NEW) BUILDING

69-75  
Grand  
Ave.



Cor. E.  
Stark  
St.

**MORGAN-ATCHLEY**  
FURNITURE CO.