

AN IDEAL CHRISTMAS SHOP

PORTLAND'S LEADING JEWELRY STORE

For over 40 years this store has maintained the strictest adherence to standard value and quality, and has built up its reputation along the lines of square and honest dealing.

No pains have been spared at this Christmas season to have our stock grander and more exclusive than it has ever been, and this can only be observed through personal inspection, which we cordially invite.

THOUSANDS OF SUGGESTIONS

-IN-

Diamonds Watches Gold Jewelry
Sterling Silver Cut Glass Opera Glasses
Clocks Umbrellas and Art Goods

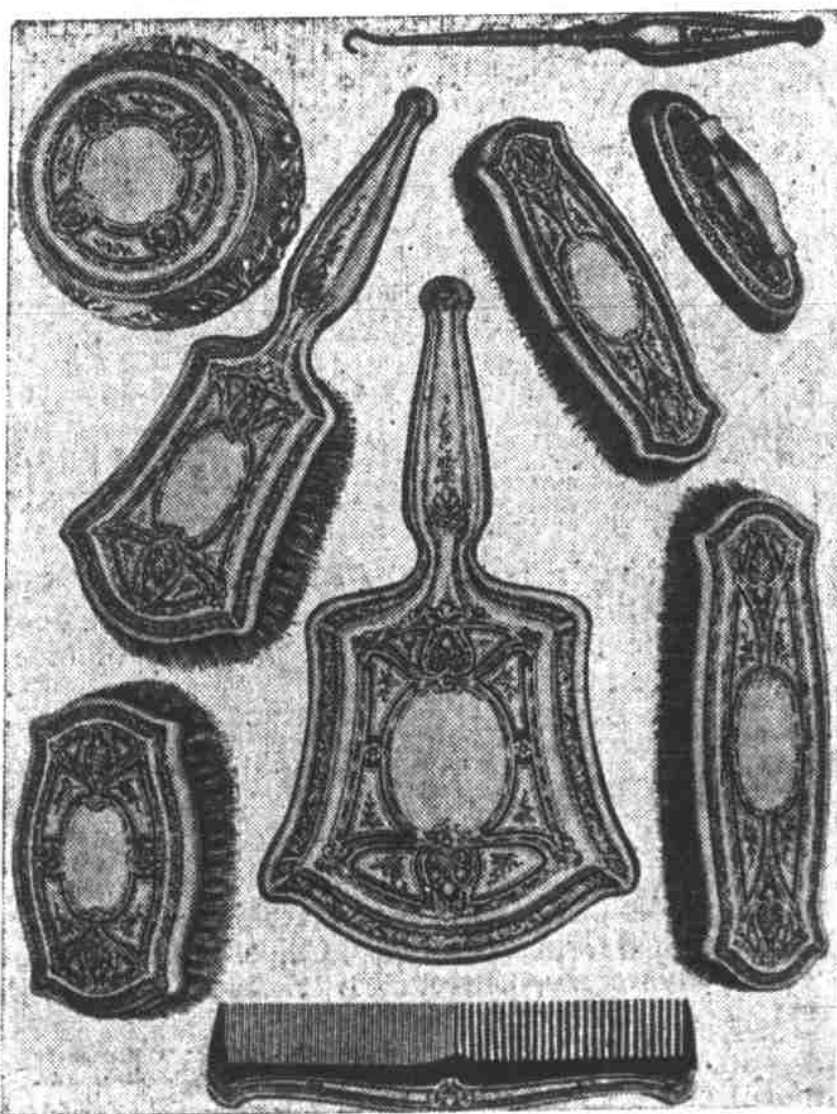
Await your choosing. They come from the world's foremost factories and are here at the lowest prices as a result of our favorable buying facilities. Select them now. Avoid the rush later on.

EXQUISITE DIAMOND JEWELRY

A GORGEOUS DISPLAY MOUNTED IN PLATINUM, CONSISTING OF NECKLACES, SOUTOIRS, PENDANTS, LA VALLIERS, BROOCHES, CLUSTER RINGS, PRINCESS RINGS, AFTER-DINNER RINGS AND BAR PINS

"STUART" TOILET WARE

THE LATEST PRODUCTION OF THE SILVERSMITH, IN STERLING SILVER, GRAY FINISHED AND IN AN ETCHED DESIGN OF UNUSUAL BEAUTY. OVER 50 ARTICLES IN THE VARIETY FOR SELECTION. NOTE THE SUGGESTIONS OPPOSITE FOR SUITABLE CHRISTMAS GIFTS.



OUR NEW PATTERN

- Suggestions:
- RINGED MIRROR
 - HAND MIRROR
 - HAIR BRUSH
 - MILITARY BRUSHES
 - PUFF BOX
 - CLOTH BRUSH
 - VELVET BRUSH
 - NAIL BUFFERS
 - COLOGNE BOTTLES
 - SOAP BOX
 - ALL MANICURE PIECES
 - TALCUM BOTTLE
 - SALVE BOX
 - SHOE HORN
 - BONNET BRUSH

New Location
283-285 Washington St.

A. & C. Feldenheimer

Between Fourth and Fifth,
Rothchild Building

LEADING DIAMOND MERCHANTS.

JEWELERS.

OPTICIANS.

