

1200 Miles Through Central Oregon by Automobile



Beautiful Warner Lake in Central Oregon. By C. M. Hyskell. If you expect a few homesteaders...

Will Gas in Wonderment. When a branch line is built over to Silver Lake village they will for the first time...

Numerous Freaks. For franks there are ice caves, very hot springs, very cold springs, queer old craters...

Mountains Break Plains. The wide, elevated plains are broken only by occasional detached mountains...

Ducks by the Thousands. He told Harry Hunter that one unprecedentedly dry year when the marsh water disappeared...

Elephants Descend Tree. "Soon we hear a rustling among the branches, and the elephants begin slowly to descend the tree..."

Elephant's Grizzly Bear. "This grizzly bear that fights that way, ain't it?" Parker put in, intensely interested.

Area Has No Outlet. This vast interior area has no drainage to the sea, and owing to its altitude...

Mammoth Red Clover Raised on Pumice Stone Land at Graves Ranch

Professor Russell, Professor E. D. Cope and Edward A. Beal have made short trips of investigation. Professor J. O. Snyder of Stanford has studied its fishes and lakes...

These miles of prairie and valley lands will produce fruits and vegetables. It was from the northern Lake county regions that the amazing exhibits...

Water for domestic use in central Oregon awaits the well driller. In the larger area here described good wells are struck at depths of 12 to 30 feet.

The Locomobile company will, after February 1, manufacture a 60 horse power chassis with a 37-inch wheel, carrying 27x2 1/2 inch tires...

DOINGS IN THE FIELD OF THE AUTO SELLERS

Captain A. E. Neate, of the firm of Neate & McCarty, writes from Billings, Mont., where he stopped on a business trip three days ago...

The Reo "30" reached the city last week, and accordingly many of the words of F. A. Bennett, the Reo, Standard, Dayton and Renault agent...

Thirty Buicks, an average of almost one day, are to be the allotment of the Northwest Buick company for December. Already one of the heaviest shipments of the year...

THOR MACHINE IN NEW MODEL

Motor Cycle Has Many Valuable Improvements and Features.

Considerable interest among the gasoline using fraternity attaches to the new 1910 Thor motorcycle, a single cylinder four horsepower machine...

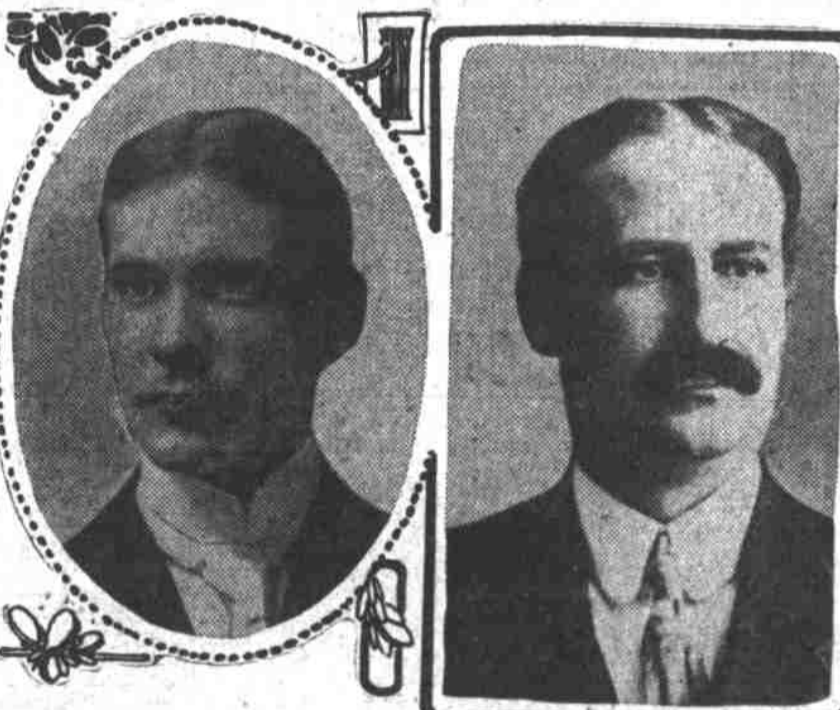
STUDEBAKER CAR'S REMARKABLE SPEED

"Considering the types of cars in the Los Angeles-Phoenix race against which the Studebaker-EMF '30" was pitted, the performance of that car in finishing third...

The Milwaukee board of fire underwriters is planning to purchase an automobile insurance patrol wagon.

The Houston, Texas, fire department has equipped itself with a new automobile.

AUTO DEALERS IN MEETING



Charles F. Wright, President.

With practically every dealer in the town enrolled and with nothing but harmony among its members, the Portland Automobile Dealers' association started last week on another fiscal year.

Chalmers-Detroit cars went to T. Irving Potter, of the Potter-Chapin Realty company and F. L. Hurton, Dr. U. C. Coe and F. F. Smith bought Hudson 19's this week, too.

Three Overlands reached Portland this week, being the Crowe Automobile company's first consignment of 1910 cars. They are of the roadster type...

AUTO FACTORIES HEAVILY TAXED

Local Crowe Company Representative Finds Plants Working to Capacity.

L. E. Crowe, of the Crowe Automobile company, reached Portland early in the week after an extended trip east. He looked to be in very good health...

JEALOUS DOG LEAVES HOME; SEEKS POUND

New York, Nov. 20.—A setter dog, jealous of another dog's new collar, ran away from his master's home in Montclair, N. J., and confined himself in the deserted pound.

MUSICAL SHOWS IN DAYS OF PHARAOH

Philadelphia, Nov. 20.—That high kicking and all other up-to-the-minute stunts and gyrations practiced by chorus girls of Broadway musical shows...



P. A. Combs, Vice-president.

The annual election of officers was held at the Commercial club last Monday night. Every dealer in supplies and machines in the city is now enrolled in the association...



George S. Brackett, Secretary.

girls—"Just as there are today on the stage," Mr. Muller declares. "And as far as costume and the use of an orchestra, and all the other attributes of modern comic opera, are concerned," he added, "we certainly have nothing on them."

If You Believe

In saving money and your teeth call on the Boston Dentists. Our methods are up-to-date and painless as gentleness, care and equipment can possibly make them.

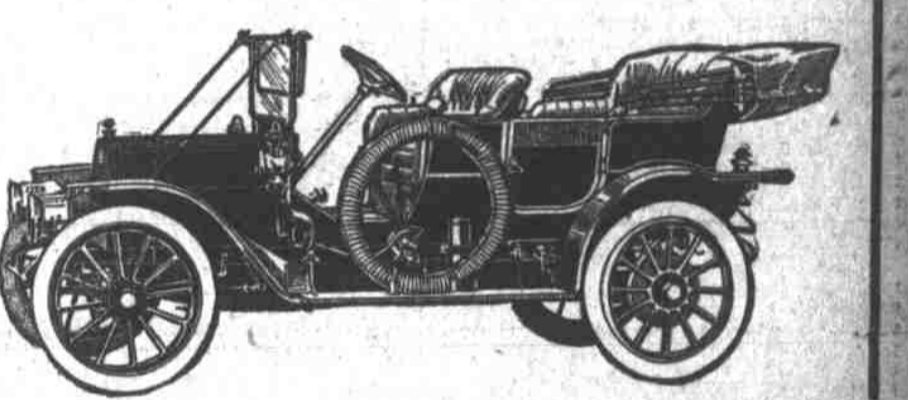
NOTE OUR PRICES:

Gold Filling, \$1.00 up; Gold Inlays, \$2.50; Gold Crowns, 22-k., \$3.00; Gold Crowns, 22-k., reinforced, \$5.00; Porcelain Crowns, \$3.00; Bridge Work, \$3.00; Silver Fillings, Cement Fillings, 50c; Enamel Fillings, \$1.00 up; Rubber Plates, \$5.00, \$8.00 and \$12.00.

Boston Dental Parlors

291 1/2 Morrison St., Portland, Or., and Over Dunn's Dry Goods Store, Willamette St., Bet. Eighth and Ninth Sts., Eugene, Or. HOURS 8:30 A. M. to 5:30 P. M. Open Evenings Until 8 o'Clock—Sunday Until Noon. Work Guaranteed for Ten Years. Lady Attendant.

30-35 Reo \$1475



30-35 H. P. FOUR CYLINDER \$1475, WITH TOP, MAGNETO, TIRE IRONS, TRUNK RACK, ROBE RAIL, GAS LAMPS, SIDE AND TAIL LAMPS AND GENERATOR, 34x3 1/2 TIRES. F. O. B. PORTLAND.

TAKE NOTICE OF THAT EQUIPMENT AND NOTE THE ABOVE PRICE IS F. O. B. PORTLAND.

Note the Following Specifications Come and Get a Demonstration

30-35 H. P. motor five passenger Touring Car or Toy Tonneau Roadster, 34-inch wheels, three forward speed selective type transmission, 108-inch wheel base, tonneau seat 48 inches wide, oil reservoir, pump and all connections contained in crank case, spiral cam gears, multiple disc clutch, 10-inch clearance under lowest part of rear axle, main bearings adjustable from outside of crank case (an exclusive Reo feature) aluminum foot mats and running board.

MAGNETO, TOP, TRUNK RACK, FULL LAMP EQUIPMENT, ROBE RAIL AND TIRE IRONS, \$1475. F. O. B. PORTLAND.

We were going to make the price \$1450, but the railroads have raised the freight rates, taking effect December 6.

FRED A. BENNETT DISTRIBUTOR FOR ENTIRE NORTHWEST

On account of limited space in our present quarters, we must close out all second hand or used autos to make room for new cars. Genuine bargains. No reasonable offer refused.

The Following Cars Must Be Moved at Once SEVEN-PASSENGER ROYAL TOURIST SEVEN-PASSENGER THOMAS FOUR-PASSENGER REO TWO-PASSENGER CADILLAC FIVE-PASSENGER WHITE STEAMER SEVEN-PASSENGER WHITE STEAMER FIVE-PASSENGER FORD FIVE-PASSENGER FRANKLIN

White Motor Car Co. 86 TENTH STREET, PORTLAND, OR.—BOTH PHONES.