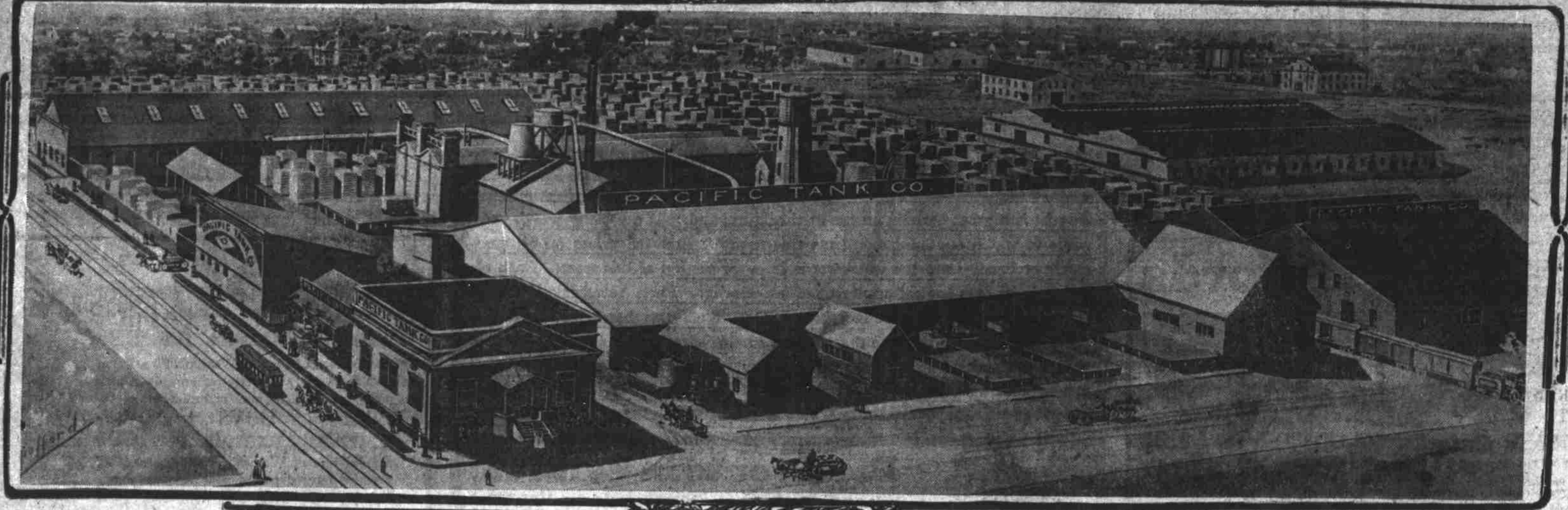


Great Wood Pipe and Tank Plant to Be Built on the Peninsula This Summer



Los Angeles Plant of the Pacific Tank Company, Which Is to Be Duplicated on the Peninsula by the Pacific Tank Company and the National Wood Pipe Company, Allied Corporations.

The largest wood pipe and tank manufacturing establishment in the world. The National Wood Pipe company will have a \$250,000 plant, manufacturing all sizes of wood pipe and all classes of wood tanks, in operation at Kenton not later than January 1, 1910. A 20-acre site adjoining Kenton has been purchased by the National Wood Pipe company, and inside of 30 days a large

force of men will be engaged in putting up the buildings and installing the machinery necessary to the manufacture of the pipe and tanks. This company operates plants in San Francisco and Los Angeles, and until recently had a factory at Olympia, Wash., which was destroyed by fire about 30 days ago. The Portland plant will be larger and more complete than

either of the California factories, and will turn out piping from two inches to 12 feet in diameter, and will manufacture wooden tanks of any and all descriptions. This company has just finished installing the water tanks on the Milwaukee road from North Dakota to Seattle, and is now putting up the tanks for the Western Pacific road from Denver to San Francisco.

Oregon fir will be used exclusively in the manufacture of the company's output at the Kenton plant, as redwood is used at the San Francisco and Los Angeles factories. Two kinds of pipe will be manufactured at the Kenton plant—machine banded pipe and continuous stave pipe. The former is manufactured in sizes from 2 to 24 inches in diameter, joints up to 20 feet in length,

and for pressures up to 400 foot head. The staves for this pipe are made from clear, well seasoned fir. They are banded with heavily galvanized steel wire, and are further protected with a coat of hot asphaltum and tar. The continuous stave pipe which will be turned out at the company's local plant will range in diameter from 10 inches to 12 feet.

This company will duplicate at Kenton its Los Angeles plant, with the exception that the buildings will all have 50 foot passageways between them, as an additional precaution against fire. The company is officered and financed entirely by San Francisco and Los Angeles capitalists. W. E. Hampton of Los Angeles is president; Ralph B.

Lloyd, first vice president, is to be the resident manager of the Kenton plant. The site of the proposed plant extends from the Columbia slough to the peninsula line of the O. R. & N. Something like six acres will be covered by the various factory buildings, and four additional acres will be required for the storage facilities.

300,000 PERSONS SEEK HOMES ON RESERVATION

(Continued from Page One.)

Kane, Coeur d'Alene, Missoula and Kallispell.

There are but few of those who have come a long distance to buy a chance on Uncle Sam's gifts but have taken the hour's ride over the electric road from Spokane to Coeur d'Alene, taken another chance there, returning to Spokane and then gone on to the registration places in Montana.

Thousands of dollars have been brought into the inland Empire and the Pacific northwest. At each place the landseekers have been welcomed and entertained and made feel the real warmth of the true western spirit.

It has been the greatest boost the best advertisement the west has ever known and the chambers of commerce together with other organizations throughout the country have been working overtime revealing to the astonished searers as much as they can of the actual wealth and resources of the "Golden West."

More astonished people were never seen than the visitors. Many of them having not the slightest idea of what the country really is, except to meet half hostile Indians roving promiscuously throughout the country, old time cow punchers, and to find frontier life in its unvarnished state, with the great expanse of unworked prairie lands of 50 years ago. The fields of waving grain, the fleecy fruit orchards, the valuable dairies and the stock farms have astonished them.

Ever since the reservation opened, Spokane has been packed almost to capacity. Streetcars and railway stations have been jammed and the principal business sections traffic has been congested. These eager homeseekers crowded together and struggled in their anxiety to reach registration. The grounds about the terminal station of the Coeur d'Alene-Spokane electric road, from early in the morning till late at night, have been packed with surging throngs.

Men and women crowded the trains everywhere—just anyone about the dusty coaches that would afford them sufficient footing for the ride to Coeur d'Alene. It was absolutely impossible for the train crew to handle the crowds. Young women and old women, speculative youths, fathers of young families and grizzled old grandfathers fought, strained and struggled to force their way aboard the coaches, with a common aim to see women clambering over the gates of the train, through the windows to reach a seat.

Round the terminal station swarmed soft fingered pickpockets. Their operations baffled the detectives and sent many a poor landseeker home penniless, leaving others stranded among strangers, hundreds and perhaps thousands of miles from home.

Approximately 300,000 persons registered for lands in the three reservations. The registration fee was 25 cents and many of the enterprising notaries profited handsomely. Some of them made all the way from \$25 to \$70 and \$80 daily. They worked from early in the morning till late at night and the fight between them was as eager as among the landseekers. They hid and outbid against each other for office room in cigar stores, up and down the busy streets, and about the convenient corner.

Many of the landseekers from the east after registering went on to the Seattle exposition, round by Portland and further north, to see as much of the western cities as possible before their tickets expired. It has been a boom to the whole northwest. It has cost the people nothing, yet it has been a boon to each one who registered, but it is a chance each has been only too glad to take, and one that would be taken again if the opportunity was offered.

100 CLAIMS SAID TO BE WORTH \$10,000 EACH

(Special Dispatch to The Journal.) Coeur d'Alene, Idaho, Aug. 7.—Packed away in 45 sealed sheets from cases in the United States registration office there are now 100,000 applications for land in the Coeur d'Alene, Flathead and Spokane Indian reservations. The weight of these applications is 2575 pounds and they represent an expenditure of stamps amounting to \$5712.46 and notarial fees to the amount of \$71,496. Of this latter amount Coeur d'Alene received \$36,384, and figuring on the basis that there were 40 notaries actively engaged in the registration they each averaged approximately \$900.

The registration for the Coeur d'Alene stands at 101,354, and it is not believed any further applications for land in it will be received through the mails. The registration for the Flathead stands at 30,558, and that for the Spokane at 99,528, and it is not believed that further applications in excess of these will be received for both of them.

Ready for Drawing. All preparations for the drawing, which will begin at 10 o'clock Monday morning, have been completed. Upon an immense platform in the open space of the lake front opposite the Hotel Idaho, the Coeur d'Alene applications will be emptied in plain view of the public and after being thoroughly mixed and stirred, pretty Miss Hamilton, daughter of Orvis Hamilton, former adjutant general of Washington state, and niece of Mayor Boyd Hamilton of this city, will begin the drawing. It is estimated that there are over 100 claims in this land worth upward of \$10,000, and some are worth two and one half times that making this probably the largest lottery the people of the United States have had a chance to indulge in.

Three thousand names will be drawn for Coeur d'Alene lands, which, it is estimated, will consume two days. After resting a day the Flathead lands will be drawn, which will require 600 names and may consume three days. Then will follow the Spokane lands, which are the least valuable of the three, and comprise a lesser number of claims. One day will close them out. A large crowd is expected to witness the drawing, and dumping into the sea every working day.

Government Should Aid. "As to the river channel between Portland and the bar, I can only say that I look upon it in the same light as other improvements here—the government should lend every assistance. The people have by a generous expenditure of money demonstrated that they want a channel that will accommodate the largest of shipping.

"As to the completion of the south jetty, I can only say that at the rate work is now progressing, it will take about two years to complete it at an additional cost of approximately \$2,000,000. This would mean that about 3000 tons of stone will have to be dumped into the sea every working day.

Real Estate Man's Novel Request. E. Sherritt, a real estate man of Missoula, Mont., called at the registration office and made a novel request of Judge Wittin. Mr. Sherritt conceived the idea of papering his office with envelopes containing the applications for lands in the Flathead reservation and asked that the envelopes, after they had been opened, be sent for him so he can have them shipped to Missoula for use there for this purpose. There are 10,000 envelopes and will cover an area of 1300 square yards. This will be sufficient to paper 16 rooms 15 feet square each, and, as Judge Wittin remarked, she will certainly be possessed of plenty of them to paper his office.

BAR AND RIVER FUND SHOULD BE VOTED

(Continued from Page One.)

spect that work, the intention being to spend all of Monday crawling over the rocks and reefs, as he himself expressed it.

Favors Completing Work. "I am heartily in favor of spending money wherever it will do good," said the general. "For the people of Portland have shown by the amount of their desire a deep channel to the sea, and shipping interests here should be expended at least one deep waterway on this coast outside of Puget sound and San Francisco, and the Columbia river is the logical location. A 40 foot channel will have to be secured eventually, and it has never been done at what cost because it will be worth every dollar that is expended.

Largest in the World. "The Columbia river jetty project is the largest of its kind in the world, and navigators visiting here will tell you that it is the most difficult ever undertaken. You must remember that we deal with the big relentless Pacific ocean and so far the jetty has proceeded with great success. The winter storms have free play there and the power of the immense waves that roll in there is something tremendous. I am therefore very anxious to thoroughly examine this work. That it has brought the desired result, there is no question for where there was 15 feet some years ago they now have 2 1/2 or 27 feet at low water.

Approved North Jetty. "When I was on the board I was very much in favor of first building a north jetty, but the other members of the board, and the Columbia river is the logical location. A 40 foot channel will have to be secured eventually, and it has never been done at what cost because it will be worth every dollar that is expended.

Chinook Being Repaired. "We are now making repairs to the dredge Chinook and it will not be long before an opportunity will be had to test the merits of this method of deepening the channel over the bar. It will be no great disappointment to me if the dredge does not prove successful, because bar dredging is a most difficult undertaking. But I would not say that it is impossible, because after a little over six years of constant work we have managed to dig a channel 1100 feet wide over a badly breaking bar leading to the harbor of New York between Coney Island and Sandy Hook.

allowing for time lost during the stormy season when operations have to be suspended.

Must Secure Money. "But," said the general, "if you people want this work hurried along it will be necessary to secure the necessary appropriations from congress. It is not for us engineers to suggest or even recommend to that body how much money should be appropriated for this or that project. We are simply there to carry out the orders of congress. No government engineer has any influence with congress nor can we interfere unless asked to do so. We cannot be made advocates or partisans to any work."

General Marshall is accompanied by his wife on the trip and Mrs. McIndoe will also be a member of the party that leaves on the Columbia this morning.

"Yes," said the general laughingly, "our wives will accompany us and possibly they will tell us how to build jetties too. You know they say a woman knows intuitively what a man never can learn."

Returning to Portland Tuesday evening.

ing, General Marshall will continue his tour, leaving for San Francisco.

Will You Look It Up? The head of every family having no piano, who sees one of the pianos advertised on the eighth page, first see

tion, of today's Journal will be sure to buy one.

New Incorporations. Salem, Or., Aug. 7.—Articles of incorporation were filed in the office of

the secretary of state today as follows: Lost Creek Mining company, place of business Portland; capital stock, \$15,000; incorporators, Ralph Fresh, V. E. Stone, and V. L. Stone.

Read talks on teeth, page 10, section 5.

Extraordinary Offerings MONDAY AT Le Palais Royal

All Spring and Summer Suits, Dresses, Skirts, Waists, Jackets, Kimonos and Millinery must go this week. A sale of this character at this particular time ought to interest a tremendous number of people. Persons desiring seaside dresses will find this sale particularly advantageous.

Tailor Made Jumper Dres'es

\$7.00 Wash Dresses... \$2.49
\$12 Panama Dresses \$7.95
\$20 Silk Dresses... \$9.95
\$25 Silk Dresses... \$12.50

Long Sleeve Silk Dresses

\$32.50 values go at... \$17.50
\$35.00 values go at... \$19.50

Coats and Jackets

In Silk, Serge, Panama, Broadcloth, etc.

Silk Petticoats

\$9.00 values go at... \$6.00
\$12.00 values go at... \$8.00
\$15.00 values go at... \$10.00
\$25.00 values go at... \$16.65

Ladies' Skirts

\$4.50 values go at... \$2.75
\$6.00 values go at... \$3.50
\$10.00 pure linen... \$4.95

Many other articles too numerous to mention at half price, and some less than too. Come and take them away.

375 Washington Street

the pianola piano

extends the means of producing music to everyone

do you realize what the pianola piano offers you?

Think of this for a moment! A few years ago there was no such thing as a Pianola, or a Pianola-piano. Today, the name of this instrument is as well known as the name of the piano itself. In every city and country of the old world—in South America and even in far-off Australia, thousands of Pianolas and Pianola-pianos have been sold. Every year the Pianola-piano is becoming more and more popular.

The Pianola-piano has taken music out of the class of the so-called accomplishment—has made it an art to be enjoyed by all, rather than the exclusive possession of the privileged few.

We wish now to call special attention to our magnificent exhibit of Pianola-pianos.

We have an enormous stock of them on hand—never heretofore, not even in New York, has it been possible to show such a tremendous number of latest Pianola-pianos of each of the various styles and in the various superb and costly woods and finishes used only by the world-renowned makers of this magnificent art product.

Many are deterred from investigating the Pianola-piano because of the erroneous impression that such an instrument costs \$1000, \$1100, and \$1150.

While we have genuine Pianola-pianos at such prices, in fancy selected woods and handsomely carved cases of special design, it should be born in mind that regular catalog styles of the genuine Pianola-piano are now obtainable for one-half such prices.

Payments are arranged just now on a \$15 a month basis for those not wishing to pay all cash, at time of purchase.

Never again will Portland witness a showing of so extensive and superb a variety of styles and designs.

There's many a "silent" piano in many a home, where there ought to be a Pianola-piano, a genuine Pianola-piano, an instrument that is not "mechanical," but, on the contrary, makes it possible for every member of the family to produce the choicest of music with perfect individuality and expression.

We are now prepared to take such "silent pianos" in part payment for one of these very latest Metrostyle and Themodist Pianola-pianos, and we will make it an object for any owner of such old-style piano to do business with us now.

If you ever expect to own a Pianola-piano now is the time to see about it at Eilers Piano House, Retail Department, "the always busy corner" at Park (Eighth) and Washington Streets.