

# MARIE DORO'S BURIED IN ROSES

Pretty Star in "Morals of Marcus" Finds Portland Friends Remember Her.

When Marie Doro, the Frohman star who is appearing here in "The Morals of Marcus," entered her dressing room at the Bungalow last evening she found herself in a bower of flowers arranged by her Portland admirers. To a reporter who sought to interview her on her impressions of Portland she responded through the doorway behind a huge bouquet of roses, and smiled with her big, glorious eyes, but declined to say more than a brief "How do you do?" and "Glad to see you."

# SCREAMS COME FROM THE HOUSE

Much Heralded Comedy Brings Tears Not of Sorrow on Opening Night.

Specialists can decide whether "The Blue Mouse" is "proper" or not; the audience at the Lyric theatre last night decided that it was immensely funny. As a machine for producing laughs, "The Blue Mouse" is eight cylinders. You are so busy laughing at ludicrous situations that you have no time to make judgments upon their propriety during a brief "How do you do?" and you have forgotten just what these situations were, or else find that the charming little blue mouse has led you quite unsuspectingly upon precarious ground.

# Mid-Season Specials

## A. B. Steinbach & Co.

Early in the season, when men usually buy clothes for Summer, our line of fine suits, selected by us and made by the best makers in the land, were the main attraction of the town in clothes. And we certainly did sell a lot of them; no better clothes were ever offered, and no fairer prices were ever quoted on them.

Now we're cleaning them up; the entire line of fancy Spring and Summer weights, many of them right for wearing late into the Fall, many suitable for this weather. You have the chance at high-class clothes at the price of ordinary kind.

Men's Suits		Young Men's College Suits	
\$50.00 Suits Special	\$37.50	\$30.00 College Suits Special	\$22.50
40.00 Suits Special	30.00	27.50 College Suits Special	20.65
35.00 Suits Special	26.25	25.00 College Suits Special	18.75
32.50 Suits Special	24.40	22.50 College Suits Special	16.85
30.00 Suits Special	22.50	20.00 College Suits Special	15.00
25.00 Suits Special	18.75	18.50 College Suits Special	13.85
22.50 Suits Special	16.90	18.00 College Suits Special	13.50
20.00 Suits Special	15.00	15.00 College Suits Special	11.25

### EAST SIDE CARNIVAL IS NOW NEARLY READY

The people who visit the midsummer carnival to be given by the Catholic Young Men's club of the East Side will see some of the most interesting animal performers alive today. Mowgli and Okela, the orang-utangs to be on exhibition, are indeed rare specimens. Mowgli was shown here about a year ago, but this will be the first appearance of Okela. Mowgli is one of the best specimens ever brought to this country and has shown remarkable vitality. Usually they live only a few months in captivity in this climate, contracting the identical ailments that humans do when suffering from exposure.

### AT THE THEATRES

"The Blue Mouse." The people who crowded the Lyric theatre last night can tell you why "The Blue Mouse" has made such a hit in Europe and New York. Elsa Ryan is a cure for neurasthenia.

# Richland

In the center of the Columbia river early fruit belt. Your opportunity lies in buying in one of the newer districts (but in the proved fruit belt), where values are reasonable—in a district where your five-acre tract will cost you hundreds instead of thousands, but where it will be sure, in turn, to be worth thousands also. There are a few such places. One of them is

## Richland on the Columbia

And we believe it is the best buy in the state today. We want to tell you why we think Richland is better for you than other districts, and if we can show you, we want you to own one of our choice tracts. A few advantages possessed by RICHLAND are: 1. Early ripening of fruit and vegetables, which means top prices. 2. Immense scope of district—28,000 acres in the project; 16,000 acres already under ditch, which means minimum freight rates and buyers on the ground to bid for your crops. 3. Superior transportation facilities—best boat landing on the river and two railroads under construction. 4. Unsurpassed gravity water system, and supply for several times the area possible to irrigate. 5. Lay of land almost perfect, sloping gradually to the river, of which it commands a magnificent view. 6. Mild winter climate. 7. Schools and churches and all modern conveniences of town and country life. 8. Low prices and easy terms—the best and the cheapest.

**\$125 an Acre, on Time  
Including Perpetual Water Right**

Our land will be worth as much as land in any other district, because it will produce as much and as good fruit—apples, pears, peaches, cherries, grapes or small fruit—as any district anywhere, and we charge only what the older districts charged 10 years ago. There are already 800 people at RICHLAND, and when it is fully developed it will have the largest orchard population of any district in the Pacific northwest. This land will be advanced in price this spring, so buy now and save money. Write for literature, or call at our office for further information.

**A TOWN LOT IS A SAFE INVESTMENT — RICHLAND WILL HAVE TEN THOUSAND POPULATION IN LESS THAN TEN YEARS SPOKANE OFFICE**

# Richland Land Co.

A. W. HOVER, Manager  
110 Second Street. Phones, Main 1743, A1743

### HARRY CLARK WILL SERVE WHOLE YEAR

One year on the rock pile at Kelly Bay was the punishment meted out to Harry Clark, an ex-convict, by Judge Bennett in municipal court this morning on a charge of larceny. Clark was accused of having robbed John Arthur of his watch and \$18 in money. He met young Arthur and proposed going to a rooming house and in the night arose and took the money and watch and left. The house was located and arrested the following day.

### PERSONALS

J. P. O'Brien, vice president and general manager of the Harriman system in the northwest, will return this evening from an extended inspection of the Washington division of the Harriman lines.

### Utah Marshal Nominated.

Washington, July 12. — President Taft today sent to the senate the nomination of James H. Anderson for United States marshal in the district of Utah.

### Seal Rock Beach.

At mouth of Elk creek, most picturesque resort in the world. Lots \$125 to \$200. Oregon Land & Timber Co., 270 1/2 Washington street.

### UNSOPHISTICATED GOLD MINE IN BIG MUD HOLE

That one farmer out to the east of the city is a "wise old duck" when it comes to "bleeding" automobile sports from the city, is the assertion of a number who were recently out that way for a spin. They say he is as foxey as they make them and puts up such an unsophisticated and innocent appearance that the would take him for "it" were there but one honest man in the whole wide world.

driver, for they conceal the depth of the hole until the machine gets stalled. "There is no getting out of that hole unaided," said one of the victims of the chuck hole and farmer, and the only thing to do is to go for help. Near by you see the farm, a powerful team of horses already in harness tied to a tree and the farmer over at the well getting water. Of course he saw us get stuck, but modestly forbids his "butting in." So he went to the well for a drink of water.

### There's Health and Happiness in the habit of eating

### Grape-Nuts

The food contains elements from Wheat and Barley which rebuilds broken Nerves and Brain. Try it ten days.

"There's a Reason"

"I reckon I could help you out," he'll answer when you ask him for the use of the team for a few moments. "Don't know if the harness will stand the strain, but we can try."

## PLAYER PIANOS



KNABE  
EMERSON  
HARRINGTON  
HARDMAN  
FISCHER  
HENSEL  
MILTON

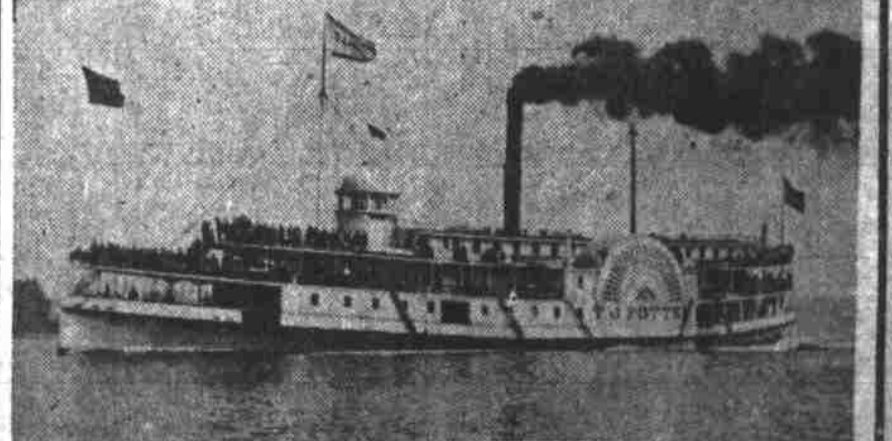
Since the Player Piano mechanism has been perfected and it is no longer in the experimental stage, nearly every high-grade piano-maker is installing perfect player mechanism in his piano. It must be perfect. He cannot jeopardize his reputation by using an inferior player. Now you are afforded the opportunity of buying here a standard piano with a perfect 88-note interior player.

TERMS OR CASH  
OLD INSTRUMENTS TAKEN IN EXCHANGE  
The Wiley B. Allen Company  
Corner Fifth and Oak. Entrance 304 Oak St.

## NORTH BEACH

SERVICE OF THE O. R. & N.'S FINE EXCURSION STEAMER

## T. J. POTTER



BETWEEN  
PORTLAND AND MEGLER  
From Portland, Ash Street Dock, Daily Except Saturday and Sunday, 8:30 A. M., Saturday Only 1 P. M.  
Meals on the Potter This Year Will Be A La Carte  
Baggage should be at dock at least 30 minutes before departure.  
Season Tickets from Portland ..... \$4.00  
Saturday - 80 - Monday Tickets ..... \$2.00  
Five - Trip Commutation Tickets ..... \$15.00  
Reduced rates will prevail from all parts of the state.  
Purchase tickets at the City Ticket Office, O. R. & N., Third and Washington Streets.  
WM. McMURRAY, General Passenger Agent, Portland, Oregon

Boulevard, A. E. Call, erect one story frame dwelling; \$1600.  
East Eighth street between Thompson and Branson, E. W. Carnahan, erect two story frame dwelling; \$750.  
Michigan Avenue between Skidmore and Mason, N. Paulson, erect one and a half story frame dwelling; \$2500.  
East Forty-eighth between Karl and Powell Valley, R. McIntosh, erect two story frame dwelling; \$2800.  
East Eighteenth street between Thompson and Branson, E. W. Carnahan, erect two story frame dwelling; \$1800.  
Fourth and Sixty-fifth, G. E. Huff, erect one and a half story frame dwelling; \$1800.  
Division street between Thirty-seventh and Thirty-eighth, A. M. Doherty, erect one story frame bakery; \$200.  
Sherman street between Fifth and Sixth, Mrs. I. P. Mosher, erect two story frame dwelling; \$300.