

Sole Portland Agents Royal Worcester, Bon Ton and Adjusto Corsets—Agents Ladies' Home Journal Patterns

Colored Lace Bands

In solid colors or shaded designs to match all shades of dress goods; good values: \$1.00 values, special...48c

Chiffon Veilings

By the yard, in all staple colors; regular val-ues to 75c yd., spec. 39c

Women's Dutch Collar

In lace and lawn combinations, hand-embroidered linen and novelty designs; regular 65c and 75c values, special...49c

WOMEN'S HAND EMBROIDERED LINEN COLLARS, also lace and linen combinations; regular prices up to 48c 75c each, choice...48c

InNotions

Dress Shields, size 4, double covered; 50c value...15c White Cotton Tape, 10-yd. box, 30c value, piece at...10c

Olds, Wortman & King The White Sale Grows

In Favor Daily With Greater Bargains in Evidence Now Than at First. Every Department Yields Its Full Quota of Startling Values --- White Sale Savings From Every Part of This Big Store. Come, and Come Early!

In Toilets

Pearl Bath and Laundry Soap, large value, special, each...5c Calder's Dentine Tooth Powder, 25c bottle, spec. 10c

\$3.50 Gloves at \$1.88

16-button length, suede Kid Gloves, in black or white, all sizes; \$3.50 values, at...\$1.88

\$1.75 Gloves 87c Pair

16-button length Silk Gloves, in black or white; all sizes; values up to \$1.75 the pair, at...87c

Complexion Veilings

A new line of these in all the leading shades; priced at the yard, \$1.00 from 50c to...\$1.00

Women's 65c Hose 39c

Women's extra quality Lace Hose; also plain lisle and embroidery designs; regularly worth up to 39c Reg. vals. up to 35c...18c

Tailored Suits Half Price Big Muslinwear Specials

Every One Except the White Ones

To hundreds of women who are numbered among the more discriminating of Portland's style seekers, this is the most welcome announcement ever made by a Portland store. 'Tis no story of the short lots or meager assortments, of poorly chosen styles, but the best and largest stock in the Northwest is to go on sale at half the regular price.

There is not a back number suit nor poor style among the entire lot. There is no possible want in a tailored costume that cannot be supplied from this immense assortment.

Table with 4 columns of suit prices: \$18.50 Suits at \$9.25, \$20.00 Suits at \$10.00, \$25.00 Suits at \$12.50, \$30.00 Suits at \$15.00, \$35.00 Suits at \$17.50, \$50.00 Suits at \$25.00, \$85.00 Suits at \$42.50, \$150.00 Suits at \$75.00, \$175.00 Suits at \$87.50

Thousands of Garments Are Reduced

Dainty women revel in the exquisite beauty of the garments we offer, and those who seek better than ordinary savings are enthusiastic over the values presented. Choice unlimited and bargains unprecedented.

Extra--\$7.50 Petticoats \$4.95

Women's white cambric petticoats, finished with 24-inch flounce of embroidery and insertion. Sell regularly at \$7.50.

Sale Children's Muslinwear

Every piece of children's muslinwear in our entire stock; drawers, nightgowns, and everything in undermuslins and children's wear, regardless of regular price;

EVERYTHING IN MUSLINWEAR AT WHITE SALE REDUCTION PRICES

Special Lot One at One-Half Price

This assortment is made up of hand-made and domestic garments, some slightly soiled and mused from display, but all in perfect condition.

Special Lot Number Two—Bargains

A rousing extra special in the lingerie aisle on a special purchase of combination suits. We bought them at a figure far below their real worth and can offer them to our customers at a little less than one third below the regular selling price.

Table with 2 columns of suit prices: COMBINATION SUITS, regularly worth \$1.50, on special sale at the extra-ordinary saving in this sale, suit...98c



STORY OF THE BIG COAST FAIR

frey Chealander, a pioneer of the Yukon country. It was carried out and has been made successful by representative business men of Seattle. Its president is J. E. Chilberg, a local banker and a pioneer and heavy mine owner of Alaska.

mine and representations of scenes along the Yukon trail. Many Interesting Exhibits. The Alaskan exhibit is one of the most interesting, owing partly to the fact that it represents a territory but little known in the states east of the Rocky mountains.

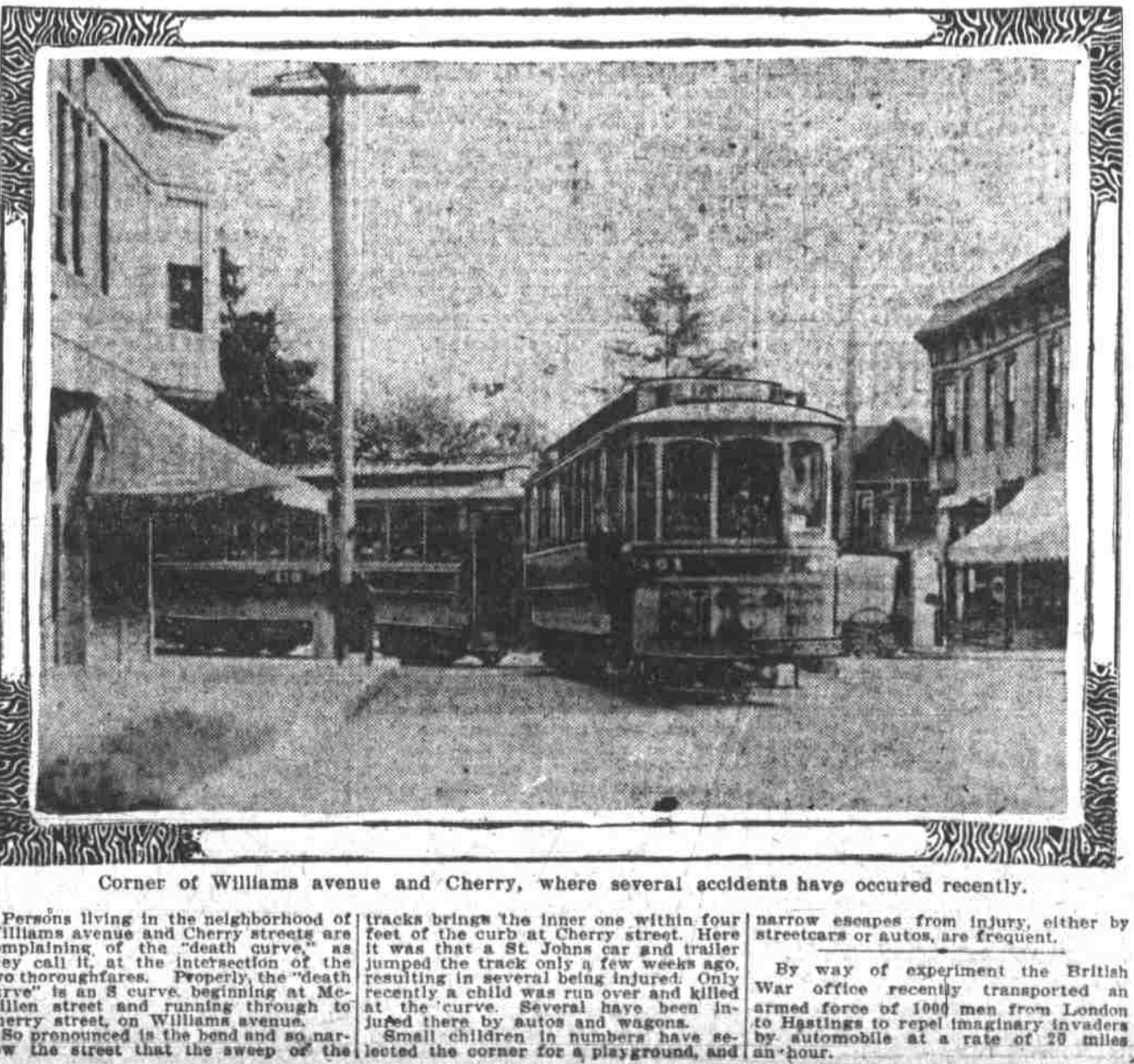
MUNLY TALKS FOR BETTER BRIDGE

From their homes from the other side of the river. "The Broadway bridge would not exceed \$1,500,000 in cost, exclusive of land damage; it would be 2800 feet in length, with an east approach at Larabee street and a west approach either on Seventh street or on block Y, near the union station.

HANLEY FOUND GUILTY

From their homes from the other side of the river. "The Broadway bridge would not exceed \$1,500,000 in cost, exclusive of land damage; it would be 2800 feet in length, with an east approach at Larabee street and a west approach either on Seventh street or on block Y, near the union station.

Upper Albina Residents Complain of Curve in Street



Corner of Williams avenue and Cherry, where several accidents have occurred recently. Persons living in the neighborhood of Williams avenue and Cherry streets are complaining of the "death curve," as they call it, at the intersection of the two thoroughfares.