

SUIT INVOLVES QUEER POINT

Justice Court Case Hinges on Question of Equine Etiquette.

Must a horse stand perfectly quiet in harness if another horse or a fly bites its neck? The United States government, represented by Assistant District Attorney Evans, is interested in settling this question. The amount involved is \$10. Two years ago R. E. Hussey, a government agent, hired a team from a local livery barn to drive into the country to arrest an Italian, who was to be deported. Hussey left the team hitched to a post while he went after the Italian. When he returned he found that one of the horses had kicked up in such a way that he had fallen across the tongue of the buggy and had broken it.

Evidence went to show that the first kick was caused by a fly bite, the second by a bug administered by the other horse. The liveryman claimed Hussey was responsible for the damage and put the account finally into the hands of a collecting agency. The matter was tried before a justice court and now the United States attorney waits anxiously for a decision.

TAKE MAIL ORDERS FOR ELMAN CONCERT

Music lovers will have the opportunity of sending mail orders from in and from out of town for the Mischa Elman concert which will be given at the Heilig theatre Monday, May 10, under the direction of Lois Steers-Wynn Coman. Mail orders for this event will be received on and after tomorrow and checks or money orders should be made payable to Lois Steers-Wynn Coman and mailed to 308 Columbia building.

Elman's success is the most positive and tremendous sort. It is almost overwhelming, and every one who has been fortunate enough to have heard him this winter in New York speaks of his work in most lavish praise. It is the first time Portland has had the chance to hear a great artist in the first flush of his American success and every indication points to the same crowds and the same enthusiasm here which have greeted the young Russian elsewhere.

PIONEER WOMAN WILL BE MUCH LAMENTED

With the death of Mrs. Martha A. Maupin, aged 90 years, at Kellows, Oregon has lost one of its oldest and best known women pioneers.

Born in Kentucky, February 14, 1829, she married Garrett Maupin in 1845, and in 1850 emigrated with her husband to Oregon, crossing the plains in a prairie schooner drawn by six oxen. The bride and groom settled upon a claim a few miles north of what is now Eugene, in Lane county, and lived there until 1866, when they migrated to Douglas county, settling on the banks of the Umpqua river.

Mr. Maupin died several years ago, leaving the widow and nine children. Seven survive their mother. Their names follow: C. H. Maupin, T. P. Maupin, J. L. Maupin, Mrs. Mary J. Fisher, Mrs. Lenora Langdon, Mrs. B. F. Ellsworth and Mrs. W. W. Benson.

PLUNGER LOSES \$17,000 IN POKER

(United Press Special Wire.) Reno, April 21.—John Harman, at one time a millionaire owner of Cripple Creek, is \$17,000 poorer today as a result of a spectacular game of poker in which he engaged with Plunger Ole Elliott last night. The session lasted all night, two bookkeepers keeping a record of the bets. One pot contained \$300 and another \$200. The pots averaged \$350 in value. Elliott is a partner of Tex Rickard, of Goldfield and Rawhide fame.

FESTIVAL CHORUS TO BE OF 300 VOICES

Seats are now selling at Ellers piano house for the second annual musical festival. This festival will be given at the Armory on the evenings of April 30,

May 1 and 2, five concerts in all. The Chicago Symphony orchestra of 50 musicians under the direction of Adolph Rosenbecker and the Portland festival chorus of 100 voices directed by Professor W. H. Boyer, will be heard at each and every concert.

Coming from the east with the orchestra will be four noted vocalists, included in the orchestra will be 10 instrumental soloists. Added to the above will be the world famous pianist Myrtle Elvin. Mail orders from both in and out of town are being received. Ad-dress letter and make checks and money orders payable to W. E. Pangle, at Ellers.

Journal want ads 10 a word.

Building Permits.
J. P. Hansen, East Eighteenth street between Prescott and Skidmore, erect one and one half story frame dwelling; \$1100.
Charles Lucke, Clinton street between Thirty-ninth and Fortieth, erect two story frame dwelling; \$2500.
A. Foss, Mississippi avenue between Russell and Goldsmith, repair one and one half story frame store; \$500.
Robert Bell, Williams avenue between Beech and Fremont, erect two story frame store and flats; \$5000.
C. W. Clark, Catlin street between Hawthorne and Market, erect one story frame dwelling; \$2000.
J. H. Small, East Seventh street between Stephens and Mill, repair two story frame dwelling; \$3000.

B. J. Sharp Jr., East Thirty-first street between Brainard and Going, erect one and one half story frame dwelling; \$1300.
Starr Sand company, River street end of Fifteenth, erect one story frame dock; \$8500.
F. D. Nichola, East Fifty-third street corner Salmon, erect one and one half story frame dwelling; \$3000.
Barnes & Starr, Commercial street between Going and Skidmore, erect one and one half story frame dwelling; \$1000.
Barnes & Starr, Congress between Going and Prescott, erect one and one half story frame dwelling; \$1000.
J. Holser, East Sixth street between Falling and Shaver, erect one and one half story frame dwelling; \$1200.

John Sundquist, Colonial avenue, between Falling and Overlook boulevard, erect one story frame dwelling; \$2000.
Standard Oil company, East Water street between Madison and East Main, erect two story brick office; \$2000.
Dr. Coffman, East Fifty-ninth street corner Sandy Road, erect one story frame dwelling; \$1500.
Conrad Klans, East Eleventh street between Falling and Shaver, repair one story frame dwelling; \$600.

PUNCH BOWL BONNET AT CHURCH? NAY, NAY

Palo Alto, Cal., April 21.—The punch-bowl hat was the last straw, and an edict has been issued by the Presbyterian church that hereafter women must sit bareheaded in the pews during services. Agitation against hatted women

was started in the church here a year ago, after mere men had craned his neck in a vain attempt to see over an ocean of floating plumes. Then came the spite devouring Merry Widow and with it further protest. Now the inverted punchbowl has capped the climax and uncapped the women.

Pay your rent money to Gregory. See ad on page 3.

FRANK L. SMITH MEAT CO.

West Side: 236 ALDER ST., 214 AND JOHNSON ST., 128 GIBBS ST., 111 AND MONTGOMERY STS., 34 AND JEFFERSON STS.
Astoria: TWELFTH AND BOND STS., 253 TAYLOR ST. (UNIONTOWN).
East Side: 512 WILLIAMS AVE., 791 MISSISSIPPI AVE., 362 EAST MORRISON ST., 362 EAST WASHINGTON ST., 334 AND BELMONT STS.

Be careful when you come to Alder street that you get in the right place. See that Smith's name and "Fighting the Beef Trust" are over the door and then come in.

OUR LEADER—Smith's pure kettle rendered Lard, 5-lb. pail, 65¢. Not an ounce of beef fat nor any other adulteration. No need of paying 75¢ and even 85¢ for eastern lard which you cannot compare with Smith's.

Fresh Creamery Butter, full 2-lb. square	55¢	Beefsteak	10¢ 12¢ 15¢	Pickled Pork	12¢ 15¢
Fresh Ranch Eggs, per doz.	25¢	Roast Pork	10¢ 12¢ 15¢	Dry Salt Pork	12¢
Fresh Willamette River Salmon, per lb.	15¢	Roast Veal	10¢ 12¢ 15¢	Corned Beef	6¢ 8¢
Deep Sea Halibut	10¢	Veal Cutlets	12¢ 15¢	Beef Tongues, each	50¢
Razor Clams, per dozen	12¢	Smith's Breakfast Bacon	17¢	Pigs Feet, per lb.	50¢
Beef for boiling	6¢ and 7¢	Smith's Sugar-Cured Hams	15¢	Shoulder Mutton, per lb.	10¢
Roast Beef	8¢ 9¢ 10¢ 12¢ 15¢	Smith's Famous Pork Sausage	12¢	Leg Mutton, per lb.	10¢
		Hamburg Steak	10¢	Loin and Rib Mutton Chops, lb.	15¢

All our meats and the following groceries at Third and Jefferson streets. Phone Main 8751. We deliver in quantities of \$2 or more. These prices will continue all week.

15 lbs. of Best Granulated Sugar	\$1.00	Our Best Mackerel, 3 for	25¢	1 bottle Olives	20¢
100-lb. sack High Pat. Flour	\$1.85	Our Best Stove Brush and our	25¢	1 bottle Curry Powder	20¢
50-lb. sack High Pat. Flour	\$1.15	Best Scrubbing Brush—the two	for	1 Jar Peanut Butter	20¢
50-lb. sack Pride of Valley Flour	\$1.35		25¢	1 Jar Imperial Prepared Mustard	15¢
Long's Preserves		2 cans Shrimps	25¢	3 lbs. large Italian Prunes	25¢
Pear	in large jars, 20¢	2 cans Mrs. C's Fig Pudding	30¢	3 lbs. large Yellow Crawford	25¢
Quince	20¢	2 cans June Peas	20¢	2 lbs. Evaporated Apples	25¢
Orange	20¢	2 cans Sardines in Oil	25¢	2 lbs. Boneless Codfish	25¢
Pine	20¢	2 cans Sardines in Mustard	25¢	1 lb. Fat Rice, whole	25¢
Raspberry	20¢	2 cans Soup	25¢	5 lbs. Navy Beans	25¢
Cherry	20¢	2 cans Corned Beef	25¢	English Walnuts, lb.	15¢
Blackberry	20¢	1-lb. can Baking Powder	15¢	Brazilian Nuts, lb.	15¢
Muscat Grapes (regular 20¢)	10¢	2-lb. can Oysters	25¢	Pilberts, lb.	15¢
Snyder's Salad Dressing (reg. 50¢)	30¢	7 boxes Toilet Soap	25¢	Dustpan, each	8¢
String Beans	25¢	2-lb. can Gelatine	25¢	Lunch Boxes	10¢
Condensed Milk	25¢	New Patent Monopicks, each	25¢	American Club Coffee, 3 cans	\$1.00
Pumpkins	25¢	Bulk Starch, lb.	25¢	Royal-Club Coffee, 1-lb. can	10¢
Tomatoes	25¢	4 pigs, Glass Starch	25¢	The Breakfast Blend, lb.	25¢
Corn	25¢	1 pkg. Corn Starch	25¢	Coffee in town for the money	20¢
Kidney Beans	25¢	1 bottle Elmer's Glue	25¢	Coffee Essence, 3 pigs	\$1.00
Salmon	25¢	4 bottles Chow Chow	25¢	3 lbs. Sago	25¢
N. O. Molasses	15¢	2 bottles Mixed Pickles	25¢	3 lbs. Tapioca	25¢
The Best Home-made Pies, each	15¢	2 bottles Sour Midgets	25¢	3 pigs, Macaroni	25¢
6 Loaves Bread	25¢	3 bottles Hot Stuff	25¢	1 3-lb. can Tripe	15¢
Quart of Pickles	10¢	2 bottles Worcester Sauce	25¢	1 3-lb. can Ox Marrow	15¢
3 boxes Matches, 1000 in box	25¢	1 bottle Olives	25¢	1 3-lb. can Roast Mutton	15¢
8 boxes Parlor Matches, 500 in box	25¢	1 bottle Griffin's Catsup, pts.	20¢	3 lbs. Sal Soda	25¢
		1 bottle Capers	20¢	10 bars Laundry Soap	25¢

THE VERY BEST



OF EVERYTHING enters into the making of those splendid SPRING SUITS that we are selling at

\$15

THE BEST FABRICS
THE BEST LININGS
THE BEST OF TAILORING

You are simply wasteful if you pay the other stores \$25 for the same quality. Is \$10 worth saving to you?

Then Come to One of Our 4 Stores

MOYER

THIRD AND OAK
FIRST AND MORRISON
FIRST AND YAMHILL

KING OF THROAT AND LUNG REMEDIES

DR. KING'S NEW DISCOVERY

FOR COUGHS AND COLDS
CURES ALL THROAT AND LUNG DISEASES

SAVED HER SON'S LIFE
My son Rex was taken down a year ago with lung trouble. We doctored some months without improvement. Then I began giving Dr. King's New Discovery, and I soon noticed a change for the better. I kept this treatment up for a few weeks and now my son is perfectly well and works every day.
MRS. SAMP. RIPPEE, Ava, Mo.

50c AND \$1.00

SOLD AND GUARANTEED BY WOODARD, CLARKE & CO.

Genuine Leather Couch Special

This special sale of Genuine Leather Couches continues all week. Values up to \$85, \$75, \$65, for only \$45.00, and the special terms—ONE DOLLAR DOWN, ONE DOLLAR A WEEK. These elegant couches are in perfect condition, solid quartered oak frames, guaranteed steel construction and covered with the best genuine leather, deeply hand-tufted and button-tied. Nothing like this couch bargain ever before offered in Portland. Examine them and you will be convinced of the truthfulness of this statement. Values up to \$85 for only \$45.00

\$1.00 Cash
\$1.00 a Week
\$8.00 Sanitary Steel Couch \$4.75

They open into full bed size. They are perfect in every detail. We always undersell others in this couch for the reason that we ship them in carload lots. This is not the cheaply made, inferior couch sometimes on the market, but the standard Sanitary Couch priced elsewhere at \$8.00. Gevurtz' price only \$4.75



Sewing Machines

Cheaper than renting them
\$1.00 Cash
and then only
50c a Week

Why Gevurtz Sells the Cheapest:
We Buy in Immense Quantities & Ship in Full Carload Lots

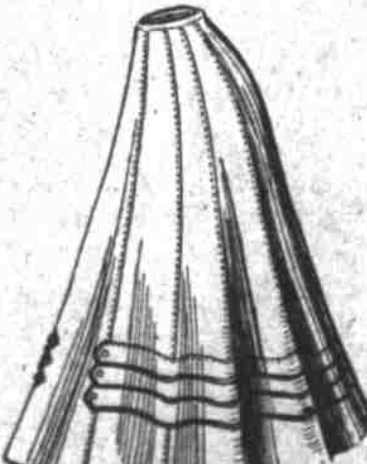
GEVURTZ & SONS

First and Yamhill Second and Yamhill

Open a Charge Account
Pay \$1.00 a Week

Latest Spring Styles in Ladies' Suits

All the latest novelties in Ladies' and Misses' Spring Suits are shown in our Ladies' Ready-to-Wear Department. We make a specialty of large and small sizes. If you are hard to fit, do not fail to give us a call. You are assured of fair treatment—good values for your money, for our prices are based upon a very modest profit. We buy right and the expenses of this department are small, thus enabling us to undersell the exclusive dealer or the large department store.



New Arrivals in Skirts, Coats, Jackets, Etc.

A new shipment has just been received, embracing long and short Spring Coats, Jackets, etc. Long Spring Coats in Shantung silk, pongee silk, mohair, etc.; fancy Lace jackets; fine Voile Skirts from \$9.00 up; Chiffon Panama Skirts from \$6.00 up. Your inspection is invited. No trouble to display goods. Remember, you are welcome to credit.

