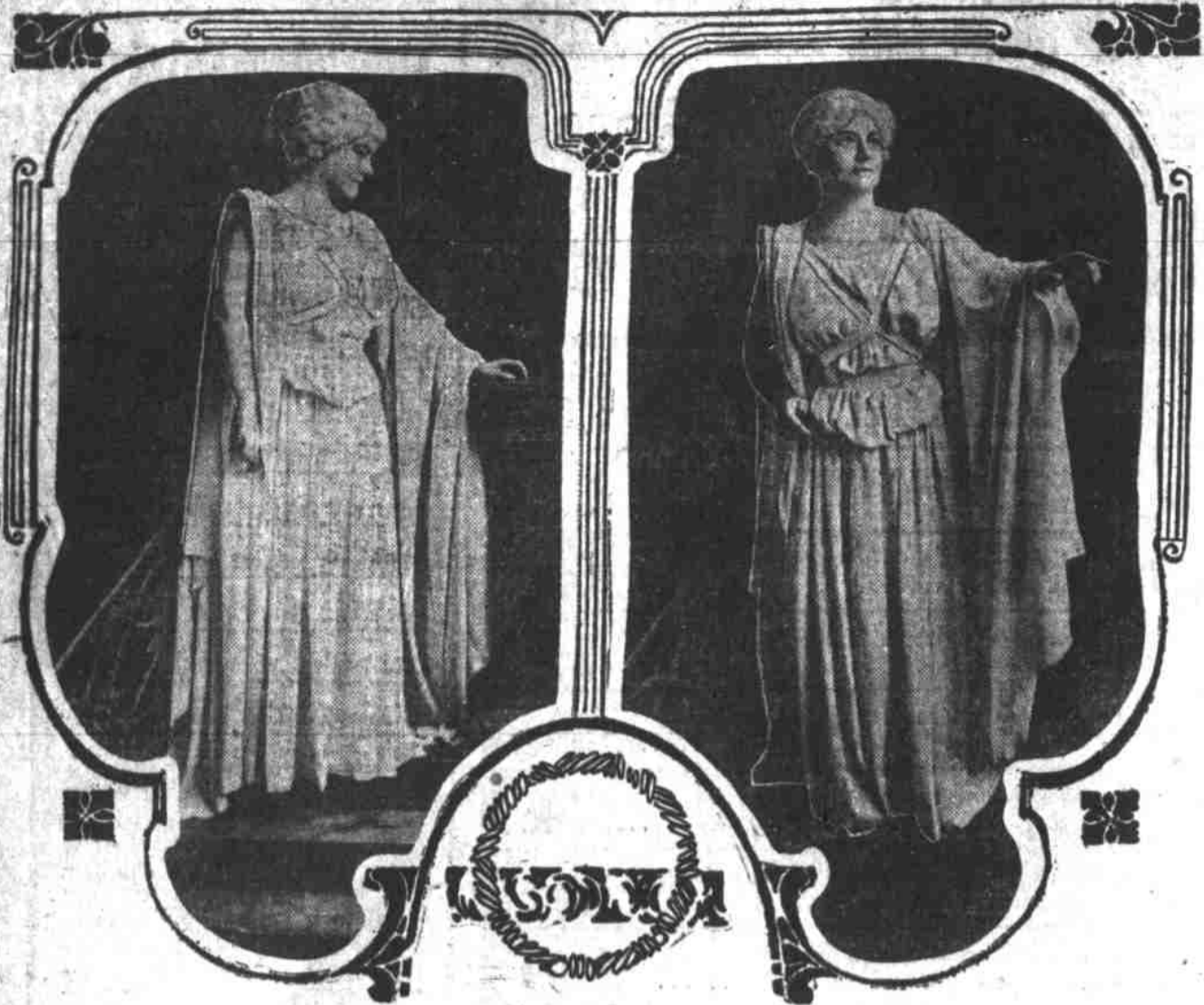


MISS MARIE DROFNAH'S POSES



Two pretty poses by Miss Marie Drofna in the statue scene from Charles B. Hanford's production of "The Winter's Tale," soon to be witnessed in this city.

SHOOTS ENEMY IN THE BACK

Daniel Rives, Man of Mixed Blood, Tries to Kill Chinaman.

An attempt to murder Jim Sing, a Chinaman, was made last evening, and the police are trying to ascertain whether it means the outbreak of tong hostilities or a personal feud.

The Chinaman was shot on a stairway of a building at the northwest corner of Fourth and Flinders streets in what is known as "New Chinatown."

Jim Sing, who lives in the building where he was shot, was removed in a Red Cross ambulance to the Good Samaritan hospital, where, it was reported this morning, he was resting easily.

Estate of Emma S. Dapp. Emma S. Dapp has petitioned the county court for letters of administration in the estate of Mary Bahler, deceased.

Louis will be here Saturday.



Rainy Day Comforts

In our Boy's Department greatly reduced. You can save your boy's health and add to his mental and bodily vigor by dressing him in keeping with our Oregon winters. Watch our ads—they pay.

Special This Week

\$5 and \$6 Cravenette Overcoats, \$3.45 \$2.75 and \$3 Rain Capes, 1.95 \$2.50 Solid School Shoes, 1.45

THE LION CLOTHIERS 166-170 THIRD ST.

AT THE THEATRES

Cyclone of Comedy at Orpheum. Connelly & Webb have an act they term "a cyclone of comedy, mirth and melody."

Clever Farce Comedy. Thomas J. Keogh, assisted by Miss Ruth Francis, is presenting a sketch at Pentages theatre this week which is unusually good.

Arthur Cunningham at the Baker. Something out of the ordinary is the attraction at the Baker this week. It is the superb baritone singer and actor of world famed Irish roles, Arthur Cunningham, who is appearing in the great Joseph Murphy success, "The Kerry Gow."

Bungalow's Popular Play. "In the Bishop's Carriage," which the Baker stock company is presenting at the Bungalow all this week, is the dramatization of the novel which is one of the most widely read and interesting books of the lighter kind ever written.

Grand's Novelties. Novelties and classy vaudeville predominate at the Grand this week. A better vaudeville entertainment for the money cannot be found anywhere.

Last Time "The Wolf" Tonight. Eugene Walter's drama, "The Wolf," a tale of the Canadian woods, will be the attraction at the Helbig theatre tonight.

Hanford Tomorrow Night. The eminent actor and tragedian, Charles E. Hanford, and his capable company of players, will present the following Shakespearean plays at the Helbig theatre: Tomorrow night, "The Winter's Tale"; Friday night, "Othello"; Saturday afternoon, "Much Ado About Nothing"; Saturday night, "The Merchant of Venice."

Lyric Stock Company Makes Good. "The Eagle's Nest" as presented by the Lyric Stock company this week makes one of the best attractions playing in the city.

FIGHT ON STATE RAILWAYS BILL IN THE SENATE

(By Journal Leased Salem Wire.) Salem, Or., Feb. 17.—The railroad lobby and the interests opposed to allowing the people to vote on the question of a state owned railroad are putting up a strong fight against the McArthur resolution, in the senate. An unfavorable report from the committee on resolutions is lying on the desk in the senate, awaiting action.

SEATTLE MEN STEAL DOGS IN PORTLAND

That a dog stealing syndicate composed of residents of Seattle is making away with Portland canines was the statement made to the police detectives yesterday afternoon by B. W. Rice of 1st Second street. Rice reported the disappearance of his dog and told how it occurred.

DRAIN NORMAL BILLS DUMPED

Senate Denies Claims of Those Whose \$19,000 Kept School Open.

(By Journal Leased Salem Wire.) Salem, Or., Feb. 17.—The senate committee on ways and means has decided to cut out the deficiency appropriation of \$19,000 to reimburse those who contributed to the support of the Drain normal school after the state quit appropriating for it.

INDICTED FOR THEFT OF CANNED GOODS

Mike Sebeska was indicted by the grand jury yesterday, charged with stealing four cases of salmon, one case of oysters, one case of canned peaches and a case of crackers from Newton Courter on February 2.

Will Run Holiday Trains.

For the accommodation of Washington's birthday excursionists the Astoria & Columbia River railroad will operate its Friday and Saturday evening trains through to Seaside.

The Man Who Eats Well

And Enjoys Food Lives Life as He Should and Gets the Most From It.

The man who eats is the man who works, and the man who works is the man who wins. Tireless workers depend upon a storehouse of vim and vigor. India is noted for its fasters and its dreamers. Europe and America for their eaters and their workers.

After a meal take a Stuart's Dyspepsia Tablet, and the meal won't hurt you or your stomach. At a midnight dinner take a Stuart Tablet, you will sleep well and get up without a headache.

COLUMBIA BEACH Columbia Trust Company, Couch Building.

OUTLET CLOTHING COMPANY

FIRST AND MORRISON STREETS

COMBINATION SALE

ALL ODDS and ENDS and Balance of WATER DAMAGED Goods

It matters very little to us what we get for these goods—we must sell them at once so as to make room for spring goods. Such sacrificing prices have never before been quoted. Thousands of Portland people have already taken advantage of those that have not should do so at once.

THURSDAY AND FRIDAY SPECIALS

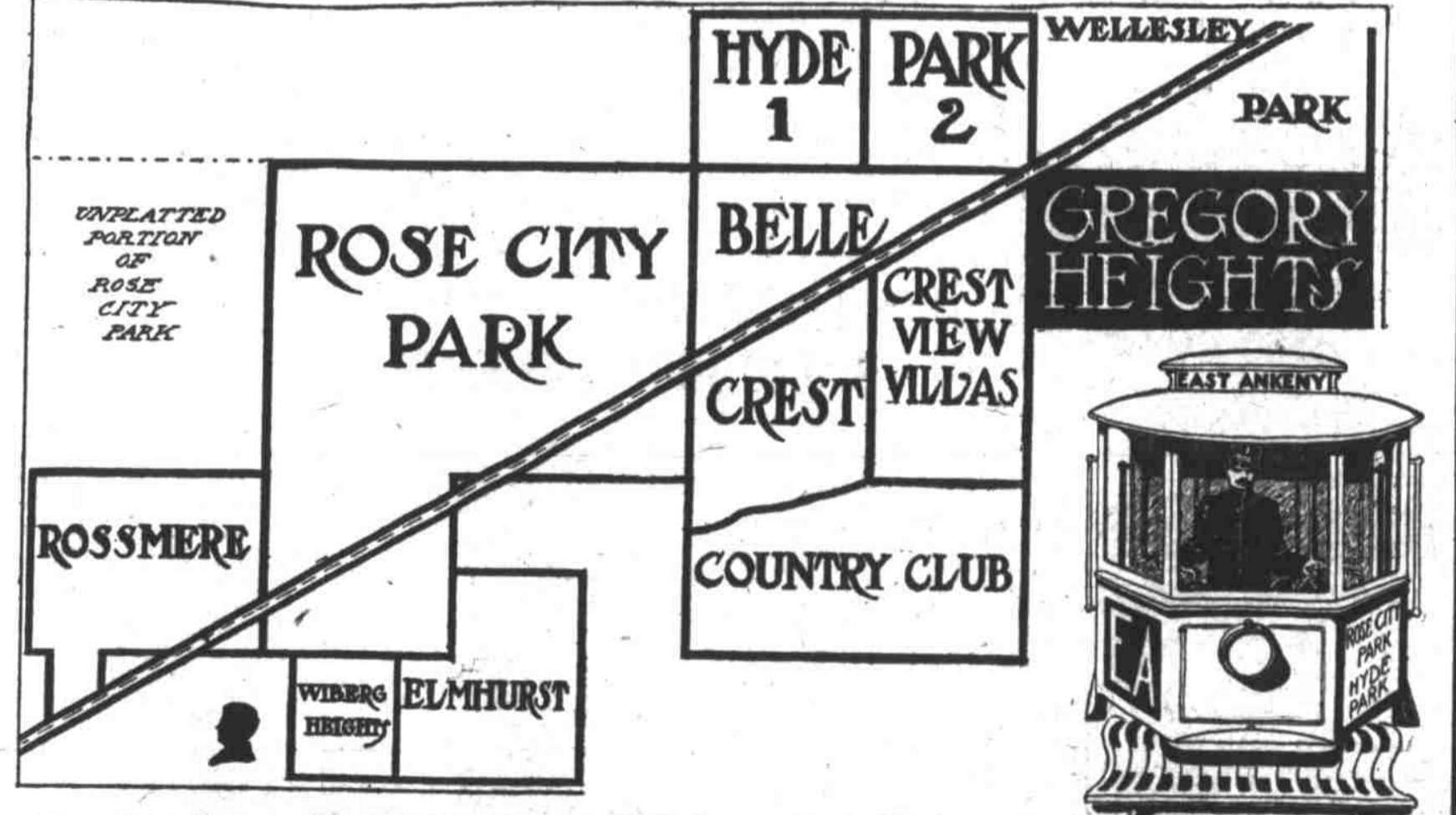
Table with 6 columns: Men's Suits Special (\$8.95), Men's Pants Special (\$1.95), Overcoats and Cravenettes (\$9.85), Men's Shoes Special (\$0.95), Three Pairs of Canvas Gloves (10c), 25c Boston Garters (12c), 10c White Handkerchiefs (3c), 50c Boys' Overalls, gray and black stripe (25c), 75c Fancy Four-in-Hand Ties (29c), 25c Heavy Black and Gray Sox (12c).

TWO HUNDRED BOYS' SUITS, From Ages 3 to 10, Worth Up to \$8.00, now \$2.65

We have thousands of other exceptional values such as you would be only too glad to take advantage of, so come Thursday if possible, but delay no longer than Friday. This certainly is a bargain treat. All ODDS AND ENDS and WATER-DAMAGED GOODS have no room with us. COME EARLY.

OUTLET CLOTHING CO., FIRST and MORRISON STS.

CONVINCING PROOF OF GREGORY HEIGHTS' MAGNIFICENT LOCATION



In the Same Neighborhood With and Adjoining ROSE CITY PARK, ROSSMERE, WIBERG HEIGHTS, CREST VIEW VILLAS, COUNTRY CLUB, BELLE CREST, ELMHURST, WELLESLEY PARK.

ABOUT THIS SECTION WHY WE SELL FOR LESS In the last two years, starting with Rose City Park and Belle Crest, this great portion of the East Side has advanced to the foremost position in Portland real estate. Values have increased more rapidly than in any other part of the city; more homes have been built and more actual improvements installed. It stands today the leading section of the leading city on the Pacific Coast. GREGORY HEIGHTS is the newest platted property, lies at the highest elevation, is reached by the same carline and is the best part of the entire East Side. The others have restrictions that prevent the wage earner from building. GREGORY HEIGHTS is for the wage earner.

TAKE ROSE CITY PARK CAR AT 3D AND YAMHILL TO END OF LINE. GREGORY INVESTMENT COMPANY. OUR ONLY OFFICE IS ON THE PROPERTY—THERE ALL THE TIME.