

RAILS TURN HEAD BY FLOODS

All Rail Lines Running Into City Are Blocked by the Damage Done by the Un- usually High Stage of Water in the Rivers.

Every railroad running into Portland is blocked by high water and washouts. The bridge across Woodard creek on the North Bank has gone out and passengers and baggage are transferred by means of a temporary foot bridge that has been strung across the swollen river. It may be several days before trains can run between Spokane and Portland. The Southern Pacific, the Washington division of the O. R. & N. is still out of commission, the line from La Crosse, Wash., to Council Bluffs, Mo., under six feet of water and cannot be operated for a month; the Northern Pacific is out in two between Pasco and Spokane, and the Great Northern between Spokane and Leavenworth. No. 3 on the North Bank, the Inland Empire limited, which left Portland yesterday afternoon, was held all night in Vancouver because of the carrying away of the Woodard creek bridge, 15 miles east of Washougal. It was started eastward again this morning, but it was necessary to transfer passengers at Woodard creek by means of a foot bridge that will be in place in a few days and can be driven for a trestle across the river.

Build Temporary Bridge.

General Superintendent Forrest, who is at Woodard creek, notified the operating department of the North Bank this morning that he hoped to get a temporary bridge up so that tonight's inland Empire limited could get through to Pasco. It is not thought probable that this can be done. No trains were sent further east than Vancouver on the North Bank this morning.

O. R. & N. is annulling all trains

on the Washington division. The situation has changed little from that of yesterday, which means that it is no better. There is no train service on the Washington division between Colfax and Umatilla via either Wallula or Walla Walla. The Connell branch is in the worst shape of any of the O. R. & N. lines. From six to eight miles of the line are washed out, the Palouse river is very high, several bends of the O. R. & N. bridge have been washed out and the town of Connell has been isolated. On the main line of the Northern Pacific between Spokane and Pasco a section of the track has been washed out and the road tied up. It is hoped to have new track laid by tomorrow. The Great Northern has been washed out between Spokane and Leavenworth on its main line and trains are not running. The Northern Pacific is out between Hunt's Junction and Walla Walla. The Elgin branch of the O. R. & N. has had a big slide between mile posts 26 and 27, necessitating a transfer across the damaged section of the track.

Trains Proceed Slowly.

Between Portland and the east, on the main line of the O. R. & N., through trains are being operated, but slowly. General Manager O'Brien has issued instructions that safety is to be made paramount to speed and trains are being operated on slow time and with the utmost caution. Trains Nos. 15 and 13 on the Southern Pacific were delayed five hours and two hours respectively by freight wreck north of Ashland last evening. The train was caught by a landslide and several cars were derailed. There were heavy rains reported throughout all western Oregon last night and some slight washes were found on the Southern Pacific main line between Salem and Turner. Streams along the west side division of the Southern Pacific are high while the Willamette river continues to rise throughout the valley.

DOCKS ARE AWASH FROM RIVER FLOOD

(Continued from Page One.)

present indications, although unreliable because of changing conditions, point to a steady rise in all of the rivers throughout this section of the country. Basements are flooded. The water is already in nearly all of the basements of Front street buildings and five feet more will flood the street. After that every additional inch would bring the water further into town, and the damage would be very large. Weather Forecaster Beals said today that this flood is the most difficult to

BRIDGE AND TRAIN FALL IN RIVER

(Continued from Page One.)

tinuous since Monday. It is snowing at Siskiyou this morning and heavy rains are falling on the valley all along the line to Dunsmuir. A slide at Mastern mine, near Ashland, held up all trains for 12 hours and derailed several cars of freight, with the narrow escape of the train going down a high bluff.

Columbia Valley Expects Flood.

(Special Dispatch to The Journal.) Vancouver, Wash., Jan. 21.—That the Columbia river valley will experience one of the greatest floods in its history is the firm conviction of steamboat men and others who have been watching the conditions during the past two weeks. At present the water stands well up, and the rise from the upper river has not reached here.

Willamette Rises at Albany.

Albany, Or., Jan. 21.—The Willamette at this city stands higher than at any time during the winter, and is still creeping upward. Heavy rains have been falling during the past 24 hours and are still continuing.

Dynamite at Colfax.

Colfax, Wash., Jan. 21.—This city is still marooned. Dynamite used to blow up the ice jams is being brought in on horseback. A raging torrent is rushing through the heart of the town.

Among Eugene's new buildings this year

will be the new postoffice, \$60,000; Y. M. C. A. \$40,000; new hotel, \$40,000; city hall, \$75,000; hotel, \$80,000.

ESSENCES RESTORE STOMACHS

Dyspepsia Everywhere Now Using Them—Out This Out.

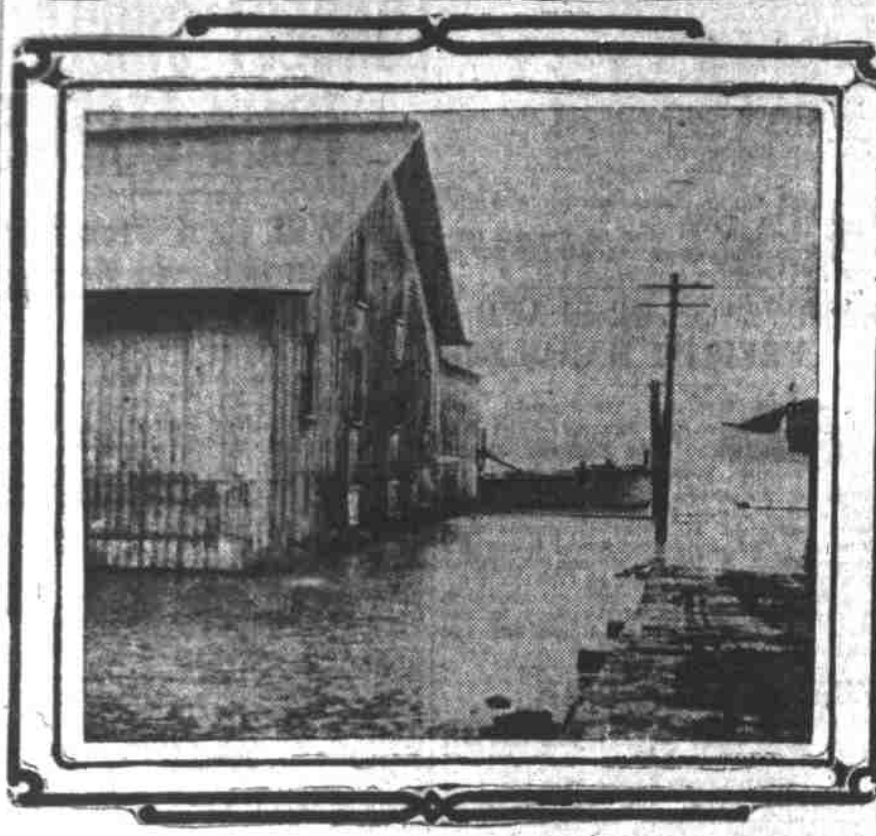
Are you ever "blue"? If before breakfast dinner and supper you do not feel a hearty-hungry feeling and longing for food of almost any kind, if you feel finicky and want something to eat but can't say what, then you are most likely suffering from chronic dyspepsia. If you feel faint, dizzy, nervous, and feel languid, dull or nervous and irritable, then you surely have need for the following simple recipe, which it is claimed has cured many famous people. Prescribed for many years with the utmost success, its power over stomach disorders is now well known and probably lies in the peculiar blending properties of concentrated essences. Get two ounces of syrup of ginger, two ounces of essence of pepsin and one ounce compound essence cardiol. Mix altogether. Then take one or two teaspoons after each meal. To excite appetite, take a spoonful before eating. May be taken freely by adults and children with weak stomachs, as it contains no opium.

Wesler River on Rampage.

(Special Dispatch to The Journal.) Wesler, Idaho, Jan. 21.—The river is two feet higher than at any time this season. The continued rain of the past two days and melting snow has changed the Wesler river to raging torrents. Considerable damage has been done along the river north of this city, and the worst is not yet past. Buildings, fences and bridges have been destroyed, and lowlands are completely under water.

The heavy rain of Wednesday night

caused a rise in the Wesler river, flooding the eastern part of town, but little damage resulted. The snake river is within two feet of its banks and threatens a further rise, and flooding of the first bench on the Oregon side of the river.



Dock at the Foot of Pine Street.

handle of any he has ever experienced.

It is impossible to make accurate forecasts because of the changeable weather, and the strong winds. The telephone rings every minute of the day and the same answer is repeated: "We don't know. Perhaps the river will raise a foot, maybe more, maybe less."

Losses along the waterfront have so far been comparatively small, considering the short time the merchants have had in which to move their goods. Some of them managed to get their goods high and dry before the water reached the flooding point, but many of them were caught. Employees of some of the front street wholesale houses worked all night last night moving goods to the ground floor, but before morning they were wading in water a foot deep.

Cement Moved in Haste.

The Couch street dock was caught with considerable merchandise, but its damage was done. Four thousand barrels of cement were moved from Columbia dock No. 1 just in time to save them and the last of the freight on Almsworth dock was put on the upper dock about 15 minutes before the lower dock flooded.

Ash street and Alaska docks are covered

under three to four feet of water, and Oak street has a foot all over the lower portion.

The Willamette is meeting with difficulties

in getting to the sea, as the Columbia is now very high and water from the Willamette is said today to be backing up the Columbia.

Wharf Boat Gets Loose.

The Regulator line wharf boat up the Columbia was torn from its moorings last night and washed down as far as the mouth of the Willamette.

Heavy Wind Blows.

Few of the present residents of Portland remember a stronger wind than that which visited this city last night. At times the wind reached a velocity of nearly 60 miles an hour although the average is somewhat smaller. No really serious damage was done by the wind throughout the city because of the fact that the worst of it came high in the air but along the river, where it got a clean sweep down on things, houseboats were loosened and ried away with the current and bridge engineers found it almost impossible to regulate the draws.

Streets up all night.

Streets signs, especially the little whirling ones, felt the effects of the gale and those people who happened to be washing clothes on the backyard clothes line didn't have to wonder long this morning what happened to their laundry.

The windows rattled in every house

in town and pedestrians spent a good share of their time chasing their hats, swept off and carried away with the wind. At 10 o'clock the velocity of the gale died down and the clouds cleared away, but before morning it was raining again and it is believed there will be more of it before there is less.

Lewiston Is Without Power.

(Special Dispatch to The Journal.) Lewiston, Idaho, Jan. 21.—This city has been without power for two nights, owing to refuse which has clogged the inlet pipes to the power plant. The high water has filled the cellars and done much damage. The Spokane river is rising rapidly and considerable damage is reported east of the city. The water is above the door knobs in the lower part of the city.

High Water at Hood River.

(Special Dispatch to The Journal.) Hood River, Or., Jan. 21.—The continued thaw and heavy rain has brought creeks and rivers to the flood stage at Hood River. The Columbia shows a 12-foot rise at this point. The high water and the floating ice in the Hood river, has forced out the water into the irrigating ditches in the valley, causing some damage. One rancher awoke this morning to find his yard surrounded by water and the floor coming through the floor of his bedroom, on account of a break in a nearby ditch. The train service is reported good.

Thirteen Feet at Rainier.

(Special Dispatch to The Journal.) Rainier, Or., Jan. 21.—There has been a three foot rise in the last 24 hours. The river has now risen 13 feet altogether. It is full of drift and chunks of ice. The creek in the valley is in danger. The Spokane river is rising rapidly and considerable damage is reported east of the city. The water is above the door knobs in the lower part of the city.

Willamette Rises at Albany.

Albany, Or., Jan. 21.—The Willamette at this city stands higher than at any time during the winter, and is still creeping upward. Heavy rains have been falling during the past 24 hours and are still continuing.

Dynamite at Colfax.

Colfax, Wash., Jan. 21.—This city is still marooned. Dynamite used to blow up the ice jams is being brought in on horseback. A raging torrent is rushing through the heart of the town.

Among Eugene's new buildings this year

will be the new postoffice, \$60,000; Y. M. C. A. \$40,000; new hotel, \$40,000; city hall, \$75,000; hotel, \$80,000.

ESSENCES RESTORE STOMACHS

Dyspepsia Everywhere Now Using Them—Out This Out.

Are you ever "blue"? If before breakfast dinner and supper you do not feel a hearty-hungry feeling and longing for food of almost any kind, if you feel finicky and want something to eat but can't say what, then you are most likely suffering from chronic dyspepsia. If you feel faint, dizzy, nervous, and feel languid, dull or nervous and irritable, then you surely have need for the following simple recipe, which it is claimed has cured many famous people. Prescribed for many years with the utmost success, its power over stomach disorders is now well known and probably lies in the peculiar blending properties of concentrated essences. Get two ounces of syrup of ginger, two ounces of essence of pepsin and one ounce compound essence cardiol. Mix altogether. Then take one or two teaspoons after each meal. To excite appetite, take a spoonful before eating. May be taken freely by adults and children with weak stomachs, as it contains no opium.

Wesler River on Rampage.

(Special Dispatch to The Journal.) Wesler, Idaho, Jan. 21.—The river is two feet higher than at any time this season. The continued rain of the past two days and melting snow has changed the Wesler river to raging torrents. Considerable damage has been done along the river north of this city, and the worst is not yet past. Buildings, fences and bridges have been destroyed, and lowlands are completely under water.

WATER SYSTEM FOR LA GRANDE

\$146,000 Contract Is Closed With Firm From Kansas City, Mo.

(Special Dispatch to The Journal.) La Grande, Or., Jan. 21.—The city council last night contracted with the American Light & Water company of Kansas City, Mo., for the installation of the Beaver creek water system, the contract price being \$146,000. The company is to accept the city's bonds for the full amount and will pay the city the difference between the price of the work and the value of the bonds, \$14,000. The pipelines will extend a distance of 18 1/2 miles, and will furnish 2,000,000 gallons of pure mountain water every 24 hours. This equals four times the amount used during the irrigating season. Work is to begin as soon as the weather permits and is to be completed within five months. The contract calls for a pipeline, telephone, roads, caretaker's house, in fact, everything necessary to the care of the entire system. Property owners are jubilant as the water is badly needed.

SELLING CRACKS A PARTING JOKE

Challenges Production of Man Who Voted Against His Will Tuesday.

(By Journal Leased Salem Wire.) Salem, Or., Jan. 21.—When the senate convened yesterday the usual motion to dispense with the reading of the journal was opposed by Senator Selling, who said the proceedings should be absolutely correct. A division was demanded and the journal was ordered read, 44 to 12. When the reading of the protests and explanations was finished, Senator Selling created a mild sensation by asking if any senator knew of any armed body of men in or around the senate chamber Tuesday that compelled any senator to vote against his own wishes. There was no answer, and President Bowerman said the question was not in order at that time. House bill vetoes passed by the representatives over the governor's veto were made a special order for today and the senate bill vetoes were introduced in the senate, making a total of 76 in that body.

It is expected that the Albany street

line will be extended this summer.

100 Stranded at Pendleton.

(Special Dispatch to The Journal.) Pendleton, Or., Jan. 21.—Over 100 people are stranded in Pendleton as the result of washouts on the O. R. & N. line between here and Walla Walla and the Spokane branch. The hotels are full and the eating houses are crowded and it is not believed that there will be any relief for at least a day.

Between Pendleton and Adams, a distance

of 13 miles, over one mile and a quarter of track was out. Superintendent Buckley says 150 men are working to repair the damage. No further trouble is expected by the railroads in the county as the snow has melted and the rivers and streams are rapidly falling.

Spokane Service Crippled.

(Special Dispatch to The Journal.) Spokane, Wash., Jan. 21.—All trains except on the Wallace branch of the O. R. & N. have been annulled on account of a bad washout on the Riparia-Spokane division. No trains will run till Friday. The high water at Odessa, Wash., washed out the Great Northern tracks and bed for nearly half a mile. All the roadbed in eastern Washington is in bad shape, the rails are far behind time and train service is practically annulled. The Northern Pacific tracks were washed out at Sprague, Wash., trying to get a line to Spokane west. There are only a few trains from the east.

High Water at Hood River.

(Special Dispatch to The Journal.) Hood River, Or., Jan. 21.—The continued thaw and heavy rain has brought creeks and rivers to the flood stage at Hood River. The Columbia shows a 12-foot rise at this point. The high water and the floating ice in the Hood river, has forced out the water into the irrigating ditches in the valley, causing some damage. One rancher awoke this morning to find his yard surrounded by water and the floor coming through the floor of his bedroom, on account of a break in a nearby ditch. The train service is reported good.

Thirteen Feet at Rainier.

(Special Dispatch to The Journal.) Rainier, Or., Jan. 21.—There has been a three foot rise in the last 24 hours. The river has now risen 13 feet altogether. It is full of drift and chunks of ice. The creek in the valley is in danger. The Spokane river is rising rapidly and considerable damage is reported east of the city. The water is above the door knobs in the lower part of the city.

Willamette Rises at Albany.

Albany, Or., Jan. 21.—The Willamette at this city stands higher than at any time during the winter, and is still creeping upward. Heavy rains have been falling during the past 24 hours and are still continuing.

Dynamite at Colfax.

Colfax, Wash., Jan. 21.—This city is still marooned. Dynamite used to blow up the ice jams is being brought in on horseback. A raging torrent is rushing through the heart of the town.

Among Eugene's new buildings this year

will be the new postoffice, \$60,000; Y. M. C. A. \$40,000; new hotel, \$40,000; city hall, \$75,000; hotel, \$80,000.

ESSENCES RESTORE STOMACHS

Dyspepsia Everywhere Now Using Them—Out This Out.

Are you ever "blue"? If before breakfast dinner and supper you do not feel a hearty-hungry feeling and longing for food of almost any kind, if you feel finicky and want something to eat but can't say what, then you are most likely suffering from chronic dyspepsia. If you feel faint, dizzy, nervous, and feel languid, dull or nervous and irritable, then you surely have need for the following simple recipe, which it is claimed has cured many famous people. Prescribed for many years with the utmost success, its power over stomach disorders is now well known and probably lies in the peculiar blending properties of concentrated essences. Get two ounces of syrup of ginger, two ounces of essence of pepsin and one ounce compound essence cardiol. Mix altogether. Then take one or two teaspoons after each meal. To excite appetite, take a spoonful before eating. May be taken freely by adults and children with weak stomachs, as it contains no opium.

Wesler River on Rampage.

(Special Dispatch to The Journal.) Wesler, Idaho, Jan. 21.—The river is two feet higher than at any time this season. The continued rain of the past two days and melting snow has changed the Wesler river to raging torrents. Considerable damage has been done along the river north of this city, and the worst is not yet past. Buildings, fences and bridges have been destroyed, and lowlands are completely under water.

EXTRA ANNOUNCEMENT PIANOS ONE-THIRD OFF

WE ARE FORCED TO MOVE—Our store having been rented to other parties at a higher rental, and our immense stock of UPRIGHT AND GRAND PIANOS, "PLAYER PIANOS," "PIANO PLAYERS" TALKING MACHINES, CABINETS, Etc., MUST FIND HOMES THIS MONTH

As no other store suitable to our business seems available at this time, we have decided to give the public the benefit of our misfortune, and are throwing our entire stock on the market at such SACRIFICE PRICES as never known before in this or any other city.

IT IS NOT A QUESTION OF PROFIT WITH US NOW

But we are fact to face with the situation of soon being without a store, and no place to display or store our goods. We instructed factories in the east to hold our orders until we had secured another store, but TWO FULL CARLOADS were already shipped before our instructions reached them; so we will have these additional 32 pianos to find places for, which will make in all close to one hundred and seventy-five pianos and "player-pianos" to go into this sale.

\$275 Pianos for \$172, \$350 Pianos for \$235, \$450 Pianos for \$305, \$500 Pianos for \$345, \$600 Pianos for \$395, \$650 Pianos for \$435

Baby Grand Pianos and "Player-Pianos" for approximately one-third off. Several good and used Pianos for about one-half their actual value.

\$1 Disc Talking Machine Records 60c. 60c Disc Talking Machine Records 35c

It will certainly pay you well to investigate and take advantage of this offer—your one great opportunity to snap up a splendid bargain at a saving of one-third to one-half on many styles, but you must act quickly.

REMEMBER ONLY THIS MONTH

Not necessary to pay all cash—we will arrange convenient terms of payment to responsible parties.

STORE OPEN EVENINGS BY APPOINTMENT

Hovenden-Soule Piano Co.

CORNER MORRISON AND WEST PARK STREETS

CALLS MEETING OF STOCKMEN

American Association Will Hold Convention in Los Angeles This Month.

The twelfth annual convention of the American National Livestock association will meet in Los Angeles at the Balfasso theatre January 28 and continue in a three days' session. On all the rail lines west of El Paso and south of Spokane cheap round trip tickets will be on sale January 21 to 25, good to return on or before February 15. The round trip fare from Portland to Los Angeles will be \$42.80, from Ashland, \$31; from

Pendleton, \$51.40, and from Boise, Idaho, \$57.50. Subjects pertaining to the livestock industry and of interest to stockmen will be discussed at the meeting of the industry in the western country.

Joseph M. Carey of Cheyenne, Wyo., will discuss "Land Laws" (Their Administration and Effect); ex-United States Senator W. A. Harris of Lawrence, Kan., will read a paper on "Our Foreign Markets." A general discussion will take place on "Tariff on Hides, Wool and Livestock." Honorable Clifford Pinchot, chairman National Conservation Commission, will deliver an address. "Federal Control of Public Grazing Lands" will be the subject of a paper by Dwight B. Heard of Arizona. Elaborate preparations have been made by the people of Los Angeles for the entertainment of the delegates and visitors to the convention.

DIVERS ON THE LAKE NEAR WRECKED CRIB

(United Press Leased Wire.) Chicago, Jan. 21.—Coroner's jury will today go to the scene of yesterday's crib disaster, one mile out in Lake Michigan, where 60 workmen lost their lives yesterday.

Coroner Hoffman left at noon for South Chicago, where he will empanel a jury. With the jurors he will then start for the charred crib, which lies off the foot of Sixty-eighth street. No more bodies had been found in the uncompleted tunnel, which is being built under water from the crib to the mainland as a part of Chicago's water supply system.

Several men were caught in the big bore and died by drowning or suffocation. Twelve workmen, with the flames roaring about them, were seen to hurl themselves into the lake. It is feared all of them were not rescued. Divers are today seeking the bodies.

The press of Chicago demands a searching investigation.

Wines and Liquors.—Special Friday only, \$1.50 port, sherry and angelo, muskadel or tokay wine, 75c per gal; \$4 whiskey, \$2.75 per gallon; \$4 brandy, \$2.75 per gallon. Phones Main 4495 and A-4499. National Wine Co. Fifth and Stark streets. Free delivery.

Journal want ads. 1c a word.

CLEARANCE SALE

Of Gigantic Proportions is now in progress at the Littlekost, Portland's Famous Bargain House. Every article reduced, and reduced to cash figures so as to make the sale the most successful ever held. Thrifty women should take advantage of the Unprecedented Bargains offered.

SUITS

Strictly tailored, all the newest models and shades; values to \$40

\$14.85

CHILDREN'S COATS

Plaids, fancy mixtures and plain colors, lined throughout; values to \$20.00

\$4.75

SWEATERS

All Wool Sweaters Vest Sweaters

\$1.75 \$1.15



COATS

Heavy Winter Coats, mannish mixtures and plain colors; values to \$25.00

\$7.95

SKIRTS

Good everyday Skirts in blacks, plain colors and mixtures; values to \$10.00

\$2.95

RAINCOATS

Silk Cravenette and Kenyon Coats; values up to \$25.00

\$9.35

290 Morrison Between Fourth and Fifth

The Littlekost

CLOAK AND SUIT HOUSE

290 Morrison Between Fourth and Fifth

FREE PACKAGE COUPON

Fill out the blank lines below with your name and address, cut out coupon and mail to THE PYRAMID DRUG COMPANY, 154 Third Street, Portland, Ore. This package of the great Pyramid File Cure will then be sent you at once by mail, FREE, in plain wrapper.

Name _____
Street _____
City and State _____