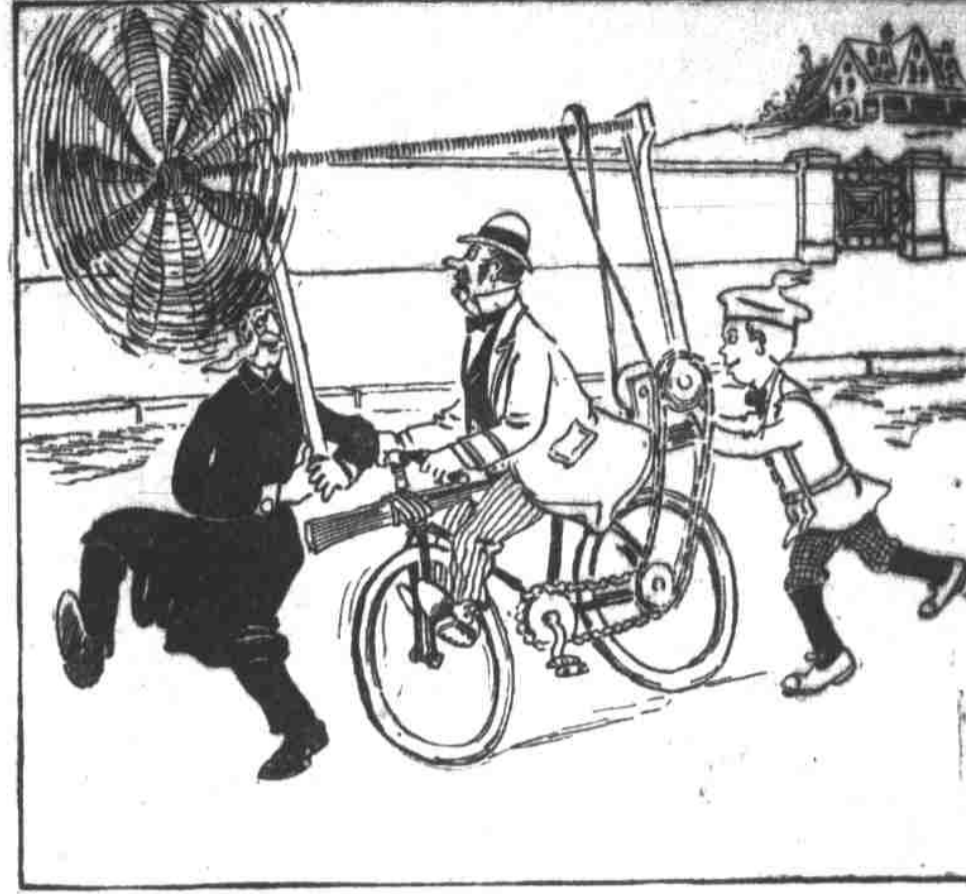
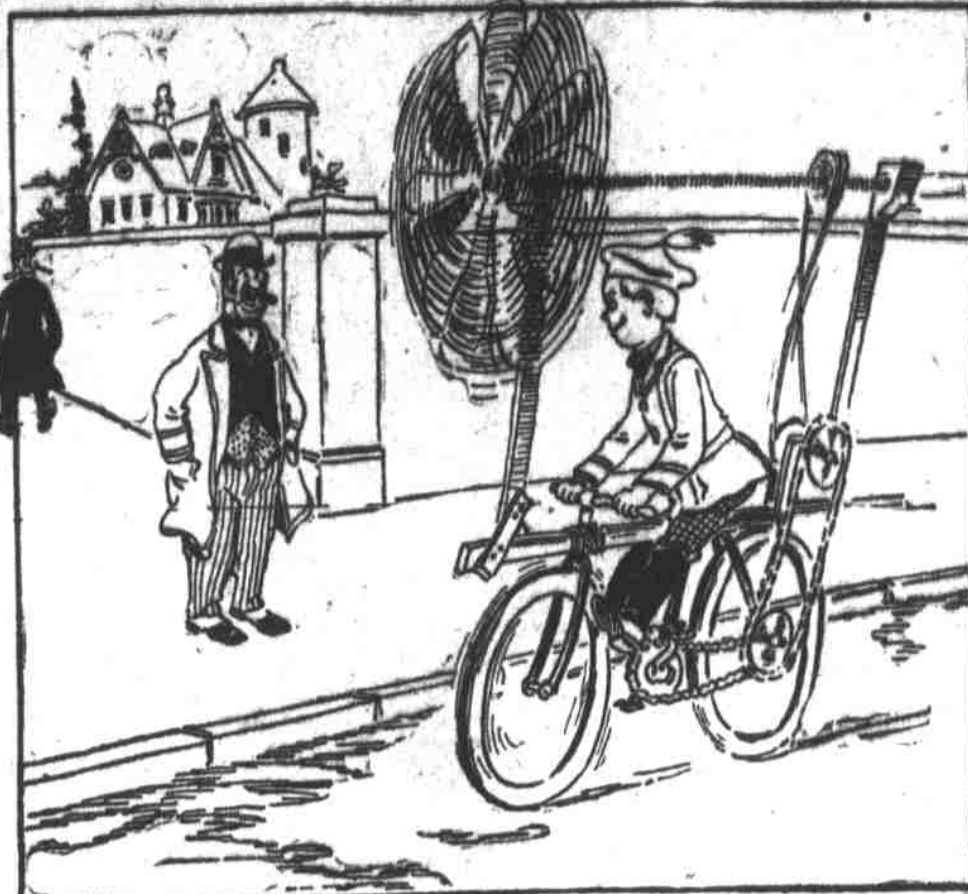
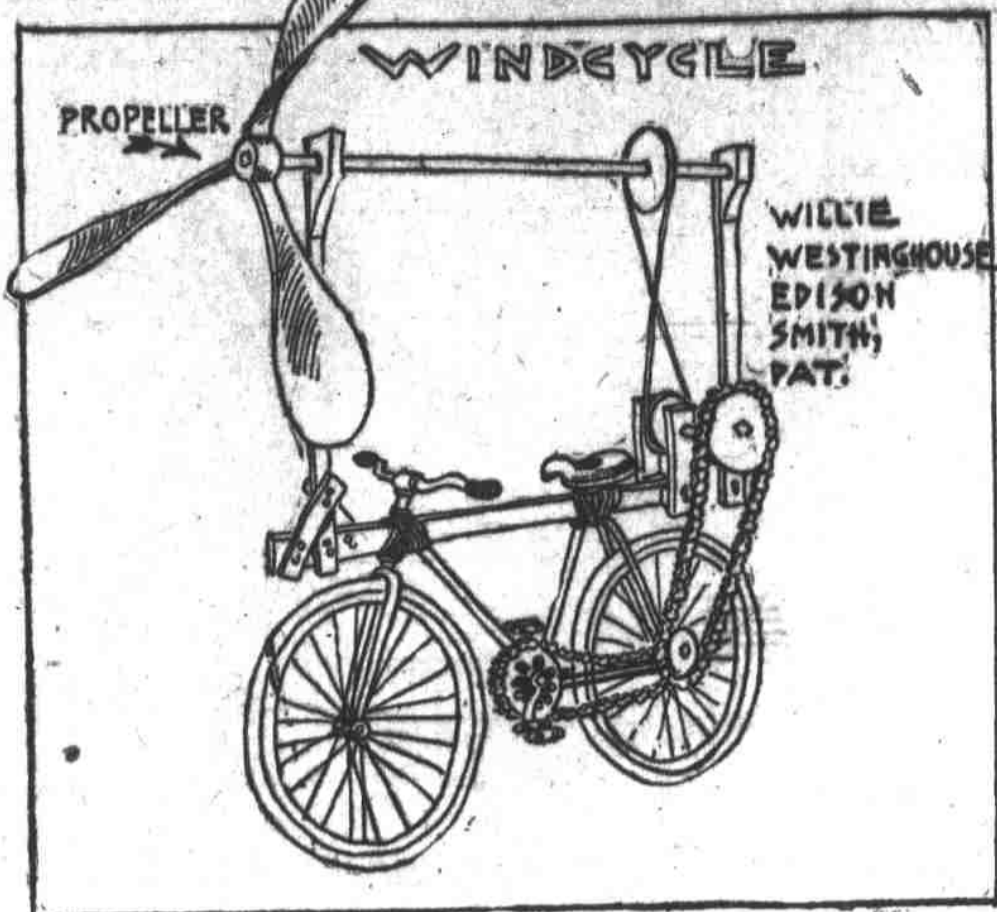
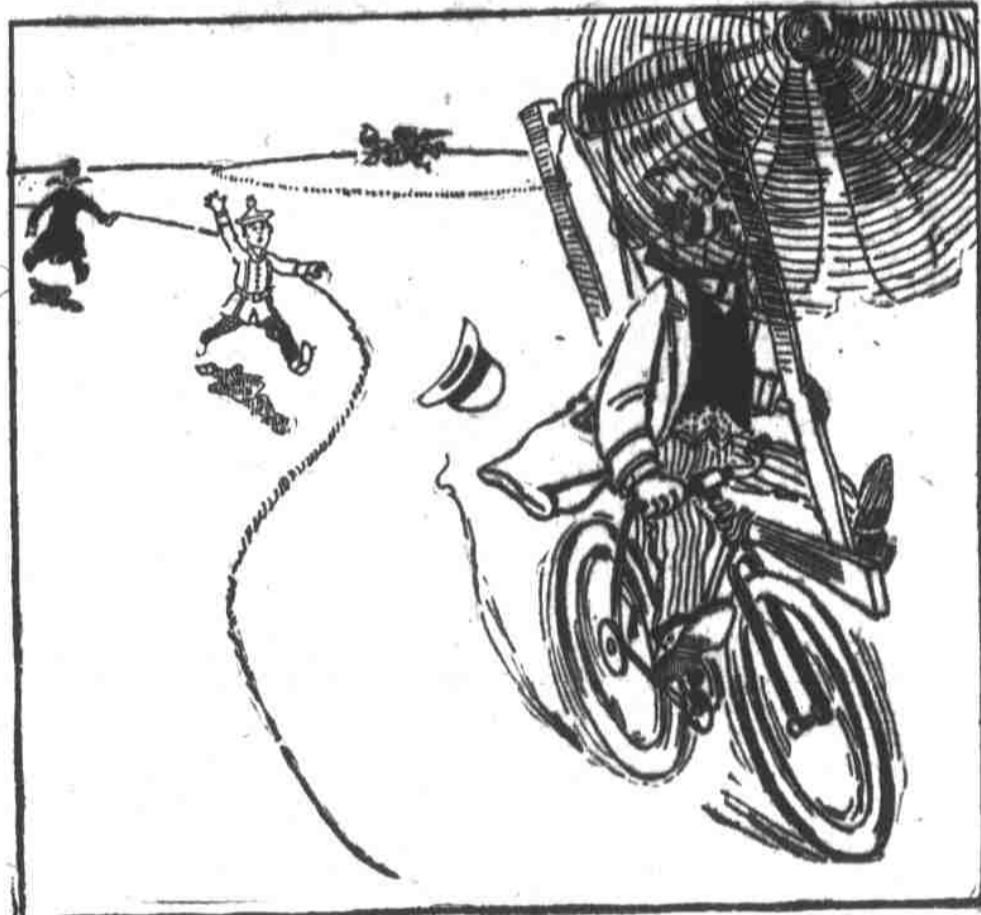


WILLIE'S PATENT WINDCYCLE GETS HIS PA INTO TROUBLE.



Dear Tommy—This is a diagram of my new windcycle. If you keep it pointed right straight into the wind, it goes like a streak of lightning. To stop it you turn sideways to the wind. Our minister came along and dared papa to try it. Papa couldn't keep track of the direction of the wind and ran into the lake! It wasn't my fault, but he's awful mad about it. Yours, etc., WILLIE.



TEACHER'S PET--HE DOES TUG SMITH A GOOD TURN

