

FIRST COAL SHIP REACHES RIVER

French Bark Bossuet Leads Small Fleet of the Season.

TRAINING SHIP WAITS FOR ORDERS

Herzogin Sophie Charlotte Will Probably Tie Up Here Until Owners Secure Suitable Charter—At Anchor Off Astoria.

The three-masted bark sighted off the mouth of the Columbia river yesterday morning proved to be the Bossuet from Newcastle, N. S. W., with a cargo of coal consigned to Hind, Ralph & Co. She crossed in last night and will probably be towed to the harbor sometime during the week.

The Bossuet is the first coal ship to arrive here from Australia this season, the Fifeshire, which started out several weeks ahead of her, having been wrecked on the reefs of Gilbert Islands when bowling along for the Columbia river. She leads a small fleet this year, because last season's importations of fuel were much in excess of the demand and large quantities were carried over. So far as known the Bossuet will be followed by only three or four vessels from the Australian coal port this season. Her cargo measured about 2,500 tons.

The German training ship Herzogin Sophie Charlotte which arrived at Astoria Friday, is still there waiting for orders. From the fact that none have been received as yet, the conclusion is drawn that she is on the disengaged list and will probably be permitted to remain in the Columbia for an indefinite length of time. Possibly she will be sent to Portland to lay up until a charter can be obtained.

As the owners would not likely engage her for anything but a grain cargo it is considered most probable that she will eventually come to Portland to load, there being but a small demand for grain carriers on Puget sound.

PLENTY OF SEAMEN

Two Vessels Find Crews Without Having to Pay Fees.

Two vessels finished loading in the harbor yesterday afternoon and will leave down tomorrow, bound for foreign ports. They are the Norwegian ship Asgerd, bound for Europe with 100,000 bushels of wheat, and the American schooner William H. Talbot, bound for Manila with 1,000,000 feet of lumber.

A peculiar incident in connection with the departure of these two vessels is the fact that both of them secured crews without having to employ the aid of go-betweens, the captain of the schooner as well as the captain of the square-rigger having a long list of applications for jobs on hand. The schooner signed a whole crew, and the Asgerd took 13 new men. The owners of both vessels saved considerable money.

There are said to be more idle sailors about Portland at this particular time than for many years, and many are anxious to get back to the sea.

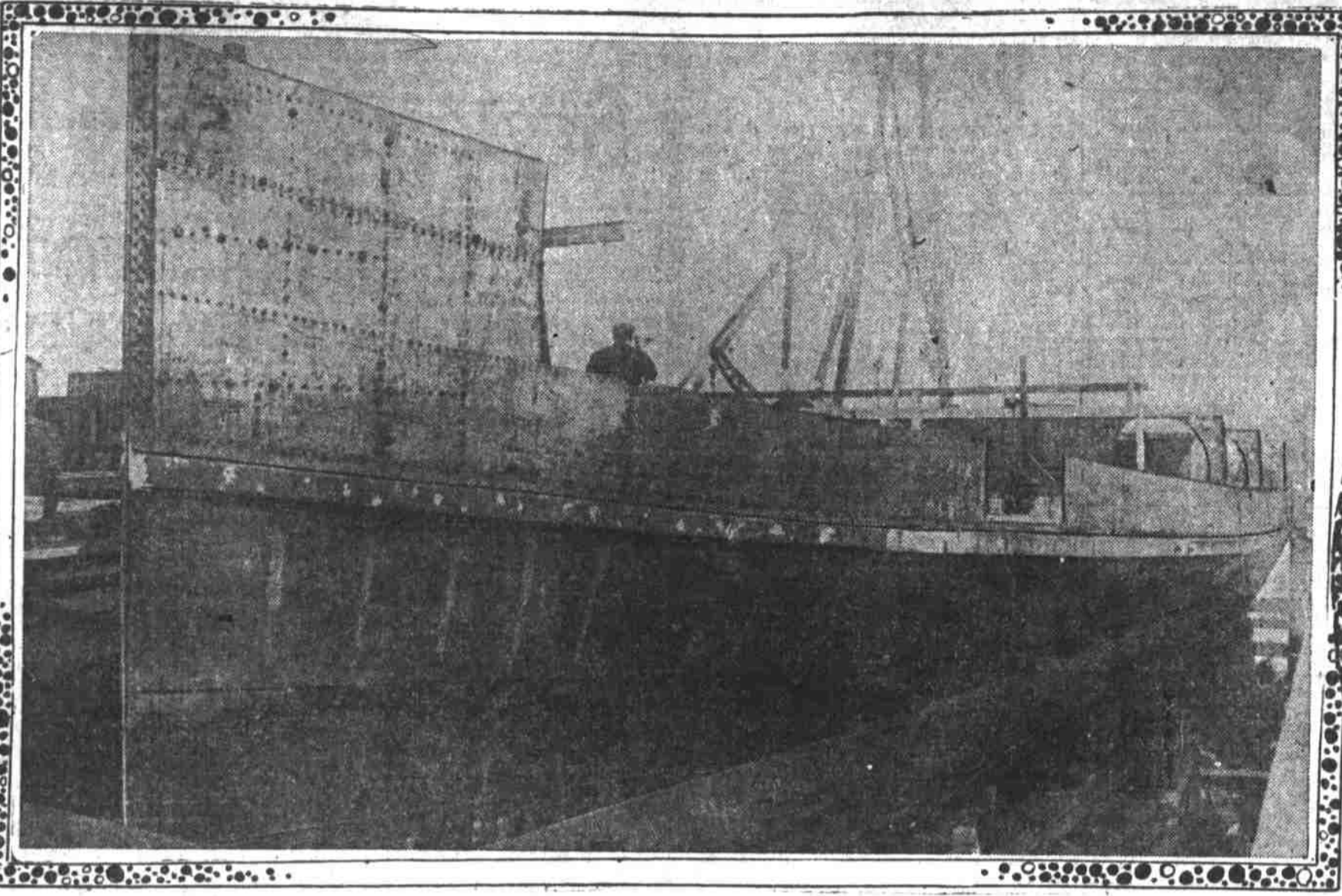
FLOUR FOR VLADIVOSTOK

Oriental Liner Alesia Will Sail in Early Part of Week.

The German steamer Alesia of the Portland & Asiatic Steamship company's oriental line will sail during the early part of this week direct for Vladivostok, Siberia, with a full cargo of flour, measuring about 55,000 barrels and valued at about \$250,000. It will be the largest shipment of flour sent from here for some time.

The liner Arabia, which arrived here Friday night from Hongkong via Japanese ports, Honolulu and San Francisco, will also take out a full cargo of flour, but it will be distributed among the Japanese and Chinese ports. The Arabia discharged most of her inward cargo at Alaska dock yesterday. She will take the Alesia's place at the flour

NEW STEEL STEAMER FOR PUGET SOUND WILL SLIDE FROM WAYS AT WILLAMETTE IRON WORKS NOVEMBER 28



Steamer H. B. Kennedy, Which Will Carry Excursions on Puget Sound Next Year During the Fair.

On Saturday, November 28, the steel steamer H. B. Kennedy will be launched from the ways at the Willamette Iron & Steel works in North Portland. The craft is the first steel passenger boat to be built here and will be one of the

finest on the Pacific coast when completed. The total cost of construction will be approximately \$200,000. The H. B. Kennedy is owned by the Navy Yard Route Steamship company of Seattle, and will be placed in commission carrying excursionists on Puget sound next summer during the Alaska-Yukon expedition. She is 190 feet long, 28 feet wide and will draw 12 feet. Being built expressly for the passenger trade she will be beautifully finished and spacious. The contract calls for delivery of the boat by March 1. The machinery will be installed as soon as the hull comes off the ways, and the preliminary trial trip will be made here.

Nebraskan, Salina Cruz Dec. 22
Nicomedia, orient Jan. 1

Vessels in Port.

Broderick Castle, Br. sh., Coal Bunkers
Leyland Bros., Br. sh., Drydock
Donna Francesca, Br. bk., Astoria
Churchill, Am. sch., Astoria
Asgerd, Nor. sh., Oseanac
Alvena, Am. sch., Astoria
W. F. Jewett, Am. sch., Astoria
Irene, Am. sch., Astoria
Washington, Am. ss., Drydock
Gael, Fr. bk., St. Johns
Aberfoyle, Br. bk., N. P. Mills
St. Nicholas, Am. ship., Astoria
Berlin, Am. sch., Gobbie
Alexander Isenberger, Ger. sh., Dolphins
Ville du Havre, Fr. bk., Columbia No. 2
W. H. Talbot, Am. sch., Inman-Poulsen
St. Anne, Fr. bk., Linton
Taurus, Am. sch., Kalamia
Lydia, Br. bk., Linton
David d'Angers, Fr. bk., Mersey
Alesia, Ger. ss., Flour mills
Marchand de Noailles, Fr. bk., Linton
W. H. Hall, Am. sch., Astoria
Alliance, Am. ss., Couch street
F. S. Loop, Am. ss., Rainier
Shoshone, Am. ss., Linton
Herzogin S. Charlotte, Ger. sch., Astoria
Arhila, Ger. ss., Alaska
Condor, gas. sloop., Couch street
Bossuet, Fr. bk., Astoria

MARINE INTELLIGENCE

Regular Liners Due to Arrive.

Homer, San Francisco Nov. 15
Cascade, San Francisco Nov. 15
Breakwater, Coos bay Nov. 15
Eureka, Eureka and Coos Nov. 15
Rose City, San Francisco Nov. 15
Rouloke, San Pedro and way Nov. 17
J. Marhofer, San Francisco Nov. 18
Senator, San Francisco Nov. 23
Nevedan, Salina Cruz Nov. 23
George W. Elder, San Pedro Nov. 24
Nunantia, orient Dec. 10
Nebraskan, Salina Cruz Dec. 20
Alesia, orient Jan. 1
Arabia, orient Feb. 1

Regular Liners to Depart.

Homer, San Francisco Nov. 16
Eureka, Eureka and Coos Nov. 16
Breakwater, Coos bay Nov. 18
Rouloke, San Pedro and way Nov. 19
Rose City, San Francisco Nov. 20
Alliance, Coos Bay Nov. 21
Nevedan, Salina Cruz Nov. 23
Arabia, orient Nov. 25
George W. Elder, San Pedro Nov. 26
Senator, San Francisco Nov. 27
Nunantia, orient Dec. 20

MARINE NOTES.

Astoria, Nov. 14.—Condition of the bar at 5 p. m.—Smooth, east wind 12 miles; weather, cloudy. Sailed at 3 a. m.—Steamer State of California, for San Francisco. Arrived at 3 a. m.—Steamer Elmore, from Tillamook. Arrived down at 12 noon.—Barkentine Benicia, sailed at 3 p. m.—French bark Bossuet, for Newcastle, Australia. Arrived at 12 noon.—Steamer Rose City, at 1:30 p. m.—Steamers Rehan Poulsen and Roanoke, for Portland. Arrived at 2 p. m.—Steamer Atlas and barge No. 2, from Portland.

Port Natal, Nov. 14.—Arrived Oct. 30
British steamer Ilford, from Portland.
Tatoosh, Nov. 14.—Arrived—British steamer Banksfield, from Portland.
Tides at Astoria Sunday—High, 6:24 a. m., 6.5 feet; 3:37 p. m., 6.6 feet; low, 12:25 a. m., 4.9 feet.

ALONG THE WATERFRONT.

The gasoline sloop Conder, Captain Jones, arrived at Couch street at 6 o'clock last night from Newport, bringing a small quantity of freight.
The steamer Alliance, Captain Olson, sailed from Couch street dock for Coos Bay at 8 o'clock, carrying a full cargo of freight and about fifty passengers.
The steam schooner Nome City, Captain Hansen, is loading lumber at the mills of the Eastern & Western Lumber company, but will shift to Rainier Monday to complete her cargo. Captain Hansen expects her to sail about Wednesday for San Francisco.
The Spanish steamer Jupiter is reported as being under charter to load

household had been turned topsy-turvy and every piece of furniture and dish-ware smashed into bits.

This is the story reported at the police station by Patrolman Rudolph, to whom the wife first made known her troubles. A warrant was issued from the district attorney's office yesterday afternoon. McGrorey had been employed as a scaler at the Multnomah box factory. Marks on the side of Mrs. McGrorey's head show that she has been struck hard blows. She says that when her husband began the disturbance she hastened to a neighbor's with the children in order that they would not be hurt and that her husband, determined to vent his spite on something, or somebody, proceeded to ruin all the furniture in the house, including a fine piano, a buffet in the dining-room, dishes, chairs and every article

that came in his path of destruction. Patrolman Gibralth was sent to the scene with a warrant for the arrest of McGrorey but failed to find the man, although there was plenty of evidence of his onslaught on the furniture.

Lumber Carriers Depart. (Special Dispatch to The Journal). Astoria, Or., Nov. 14.—The British steamship Everic sailed today for Sydney, N. S. W., with a cargo of 1,000,000 feet of lumber loaded at the Tongue Point mill. The barkentine Wrestler cleared at the custom-house today for San Francisco with a cargo of 513,300 feet of lumber.

L. W. Taft of Newport is a second cousin of W. H. Taft.

HOLSMAN WATCH SPECIALS

We have secured 163 of the best-known Watches in the United States, including all grades and styles of Elgin, Waltham and Hampden, in solid gold and gold 50-year cases. There are not watches better known than these, and none are better timekeepers. The prices that we secure these watches for enable us to place them on sale at about one half the regular price. This sale ought to win your trade, owing to the fact that you know these watches and you know their real value. You did not buy a better watch if you paid double the price. This is a sale where price and quality are the main factors, and speak for themselves. If you are thinking about buying a watch, or making one of your friends a Christmas present, you should take advantage of this sale. If you are not prepared at the present time to buy one, make your selection, and we will lay it aside for you until Christmas. Mail orders received only with privilege of returning money if sales over counter exhaust the present supply.

SPECIAL NO. 1 \$22.00 for \$11.95
SPECIAL NO. 2 \$30.00 for \$18.75



Gents' 20-year solid gold filled with 17-JEWEL Elgin, Waltham or Hampden works, good enough for the president. Regular price \$22.00.

Ladies' 14-kt. solid gold case, genuine diamond set, fancy hand engraved, and raised gold ornamentation, with Elgin or Waltham movement. Regular price \$30.

OUR SPECIAL SALE PRICE \$11.95

OUR SPECIAL SALE PRICE \$18.75

Special Sale on American Movements

7-jewel Elgin or Waltham, regular price \$6.50; our price.....\$4.80
16-jewel Elgin or Waltham, regular price \$9.50; our price.....\$6.85
17-jewel Elgin or Waltham, regular price \$12.50; our price.....\$7.45
21-jewel Hamilton, adjusted, regular price, \$22.00; our price.....\$12.50
17-jewel Rockford, adjusted, regular price, \$16.00; our price.....\$8.75
17-jewel Hampden, adjusted, regular price, \$15.00; our price.....\$8.80
21-jewel, 18-size Hampden, adjusted, reg. price, \$27.50; our price.....\$17.50
17-jewel Hamilton, regular price, \$23.00; our price.....\$12.50

We carry the very best movements made for railway service, including 22-jewel Veritas, 23-jewel Vanguard, 23-jewel Hamilton, 24-jewel Hunn Special. For prices on these movements we are the lowest.

THE HOLSMAN CO.

149 THIRD ST., NEAR MORRISON ST.

THE BUSIEST WATCH HOUSE IN PORTLAND.

BREAKS CHAIRS, STRIKES WIFE

After a protracted spree of several days, J. E. McGrorey returned to his home at 82 California street in South Portland yesterday morning and viciously assaulted his wife, so it is said, demolished the culture, and never stopped for a minute until the whole

WE ARE LOOKING AT YOU THROUGH OUR WINDOWS

3000 Blue-Eyed, Flaxen-Haired, Laughing, Smiling Dollies—Dollies with eyes that open or close, each one a little beauty, and on WEDNESDAY NEXT, NOVEMBER 18, beginning at 9 O'CLOCK in the morning

We Are Going to Give Them Away

One (no more) to every customer making a purchase of 50c or over, until every Dollie has found a happy home. Remember, no Dolls will be reserved nor given before the hour named--

9 o'Clock A. M. Only One Doll to a Customer No Telephone or Mail Orders Received for Dolls No Dolls Delivered

Dolls will be given out at once, beginning at 9 o'clock, and until they are all gone. "The early bird," etc. Doll Days originated with the "WOODLARK" Store—the largest retail drug store in this country—a progressive, modern emporium. Doll Day brings us thousands of new friends, who join the army of patrons extending back nearly half a century.

We are now showing a wonderful stock from which to make your holiday selections—Fine Perfumes, Leather Goods, Cut Glass, Fountain Pens, Exclusive Stationery, Kodaks and Cameras, Burning Outfits and Burnt Wood, Pictures (framed and unframed). One whole floor devoted to exquisite POTTERY; BRASS, CHINA and BRONZE, Edison Phonographs, Victor Talking Machines—a thousand and one useful and beautiful gifts for every person, every purse.

Ours is a liberal store. Popular prices—prompt delivery. Two full phone exchanges leading to every section in our store. Free desk-room, rest-room and tele-phones for our patrons. We cordially invite you to open a monthly account with us. To do so will save you time, trouble and money.

WOODARD, CLARKE & CO.

ESTABLISHED 1865

