

NEW CREATIONS SHOW DIRECTOIRE AND FIRST EMPIRE PERIODS



The popularity of the Directoire and the first empire periods is too manifest to need any more explaining, and the only check that is now put upon the customer or the wearer, is that the two periods should not be confused. However, they had some points in common, and these are the ones that our modern gowns are chiefly designed to include. The scant skirt, long lines from neck to hem, high waists and clinging materials are all points which have been emphasized by the creators of styles this year.

Of the newer materials for calling, carriage and out-of-door wear nothing has gained greater popularity than chiffon broadcloth which is clinging, soft and rich. Its popularity is accentuated by the fact that all three of these costumes represented, selected from different leading establishments in this city are of this material, which is equally beautiful in black and colors.

New Splendid Trimmings.

This richness of material demands a corresponding sumptuousness of trimming, and it is noticeable that although the skirts are plain, the trims have been for many years, bodices are more elaborately trimmed than ever. The hand embroideries of skillfully blended colors worked into gown for trimming.

The touches of gold and silver thread, even imitation precious stones are used with curiously happy effect in the costumes for evening or theatre wear.

All the gowns for afternoon and evening wear are trimmed. The only possible short skirt is that of the Directoire suit for walking, and if one is not careful, some over-persuasive dressmaker will turn these into trailing things.

All thin materials, chiffons, silk voiles, marquisettes, colored nets—are much liked for afternoon wear, and these very feminine effects are deservedly popular.

And a combination of different materials in one gown is more often seen this year than ever before. Satin is one of the most popular of stuffs, either in entire gowns or as trimming; net, lace, embroideries, fringes and velvet are all discreetly combined with the body material of the newer suits.

Typical of the modern style at the moment are these three gowns which were posed especially for The Journal artist:

Gowns in Empire Style.

Figure 1, is a beautiful imported gown from Saks, Wertman & King which The Journal artist has reproduced in black chiffon broadcloth in empire style, with a bodice of embroidered fillet combined with point d'esprit and hand embroidered motifs, finished with a soft satin girdle with long shawl ends.

The sheath skirt, with the opening simulated with satin bands and filled with soft material is of Directoire mode, as is the long coat richly embroidered in soutache braiding and trimmed with hand-made braided buttons. This long coat with divided skirts reaches nearly to the bottom of the skirt and gives the long clinging lines of the empire period. The coat is lined with pale blue satin and ornamented also with tiny gold balloon buttons. The hat worn with the suit is a large one of modified mushroom shape trimmed with quantities of sweeping ostrich plumes.

A New Broadcloth.

An imported costume of beautiful pale blue chiffon broadcloth combined with velvet of the new Edison blue shown by the Meier & Frank company in figure II, is a most attractive affair. The velvet-covered buttons which trim the skirt, otherwise untrimmed and falling in long graceful lines, are of the same shade as the sweeping velvet coat.

This has the short front, the long back, shirred sleeves and deep cuffs of the Napoleonic order. The gown within its empire with the short-waisted bodice elaborately hand embroidered in colors with a touch of gold. The yoke and sleeves are of blue maline, and the crush girdle of the deep-toned velvet.

The hat worn with it is an imported model of Ottoman silk of Edison blue and lined with black, trimmed with shaded ostrich tips of blue, and black ostrich aigrettes.

A Directoire Model Suit.

The handsome suit which was chosen by Lipman, Wolfe & Co. for exhibition in figure III, is a three-piece suit of salmon-colored broadcloth with satin of the same shade. The long coat is of Directoire model, of alternating satin and broadcloth bands, the satin embroidered in soutache of the same shade. The skirt which lies a little upon the floor is of tunic effect, simulated with the hands of satin. The inner bodice has fronts of the satin caught together over a vest of lace mounted over palest blue, and a touch of this color is introduced in a tiny ruche across the front of the vest. Little touches of gold in the embroidery and upon the long tassels which ornament the front of the bodice give that note which is so often brought out in the late creations of contrasting color. The sleeves of the bodice are draped folds of the satin caught up with braided buttons. The coat sleeves are tucked across, but hang straight from shoulder to wrist, only sufficiently larger than the inner sleeve to admit of its slipping on easily. The hat worn with the suit is a large imported model with exquisite drooping ostrich plumes.

OREGON ELECTRIC ROAD WILL SPEND \$600,000

General Manager Talbot Returns From New York with Authority to Make Extensions and Buy New Equipment for Portland-Salem Interurban Line.

Armed with the approval of the syndicate controlling the road and with authority to expend \$600,000 on new equipment and extensions of the line next year, Guy W. Talbot, general manager of the Oregon Electric company, returned yesterday from New York, where he went two months ago.

Mr. Talbot went east primarily to talk over the railroad situation in Oregon with the owners of the Oregon Electric Railroad company. He has decided upon the rolling stock that will be needed next year, and has recommended to the board the construction of a line from Tigardville, on the Portland-Salem line to McMinnville. The extension of the Salem line as far as Albany may also be undertaken if traffic conditions this winter warrant early commencement of the work.

"We have eight new passenger coaches on the way from the shops of the Niles Car Manufacturing company, at Niles, Ohio, now," said Mr. Talbot, "and two full baggage and express cars. Next year I figure we will need 10 coaches and 50 freight cars, although the orders for these 50 cars have not yet been placed and will be done in the first of February, in all probability.

"We are authorized to expend more than \$600,000 in the coming year, if conditions are found to warrant it. A part of this money will go for the line from Tigardville to McMinnville, which I have recommended building, but which will likewise not be decided definitely until February 1, when we can see how traffic on the lines now in operation works out.

"Also we are going to push work on the construction of the Hillsboro main line to Forest Grove, which will revise schedules on both the Hillsboro and Salem lines as soon as our new equipment arrives. We will run several limited trains daily between Salem and

Portland, the limiteds to make the time in one hour and 40 minutes and the locals in two hours. Ballasting work that has been going on on our Salem line ever since the rails were laid has just been completed, and we have one of the fastest tracks in the west."

Gorge B. Moffat of New York, president of the Oregon Electric, will reach Portland November 10 and will spend a week here, expecting to be in the city for the opening of the Forest Grove line which will be about November 15. Mr. Moffat will look over the lines and surveys of the road, and he will probably determine how soon work shall begin on the McMinnville line and on the extension of Salem to Albany.

The company has spent \$2,000,000 without issuing a bond so far, but in case of the proposed extensions, including the line from McMinnville to Albany, the company will have to issue bonds. Mr. Talbot said that the company has a surplus of \$1,000,000, and that the company will be able to issue bonds at a low rate of interest.

While in the east Mr. Talbot attended the convention of American Interurban companies at Atlantic City, where an unusually fine exhibit of equipment and track material was displayed. He inspected many new improvements, some of which will be put into use on the Oregon road, but says that of all the lines he inspected on his trip none was better and few were as good as the Portland-Salem line. The third rail is being used, very little and is found expensive to operate. Roads that have gone about their construction work along railroad instead of street railroad principles have an enormous advantage over other lines, according to Mr. Talbot.

"I'm glad to get back to Oregon," he said, "and wouldn't live in the east if they would give me the whole thing to me. Things look prosperous, and I think if everything is favorable with some road improvements and extensions under consideration will undoubtedly be made. The syndicate has approved of them, and will issue definite instructions within three months."

SIDELINE STORIES OF GREAT NORTHWEST

WORK COMMENCES MONDAY.

Rails Will Be Laid on California Northeastern.

(Special Dispatch to The Journal.)

Klamath Falls, Or., Oct. 31.—Next Monday will see the work of laying rails from Coquille to the terminus of the California Northeastern to Warden, unless some unforeseen accident happens to prevent this much-to-be-desired result. The grade is completed, all that remains being the finishing touches, which the big force of men is engaged in doing.

\$15,001 FOR EUGENE.

Valley City's Commercial Club's Effort Is Successful.

(Special Dispatch to The Journal.)

Eugene, Or., Oct. 31.—The soliciting committee for next year's Eugene promotion fund after several weeks of work has secured the amount which they set out to get. This year the publicity work has been done on a fund of \$15,000, but the work has accumulated so that several things desired by the commercial club have had to

be postponed for lack of funds. The committee today announced that \$15,001 had been secured, while \$1,400 is in sight from people who could not at present be reached, making a total of \$16,401.

One of the most important things planned to do with the fund is the building of a fine city park at the Southern Pacific station, where there is ample ground.

FIRST ANNUAL SHOOT.

Crack Marksmen Will Attend Moxee Range Event.

(Special Dispatch to The Journal.)

North Yakima, Wash., Oct. 31.—Arrangements have been completed for the first annual shoot of the North Yakima Rifle and Revolver club, to be held on the Moxee range, Sunday, November 6. The crack shooters of Yakima and Benton counties will participate. There will be seven events. The rifle range will be from 200 to 600 yards, and the revolver range from 25 to 50 yards. The events will include the medal competition, team revolver, championship team revolver, individual revolver, boys' rifle, rifle match, and

MABTON FORGING AHEAD.

New Bank and Other Enterprises Are Promised.

(Special Dispatch to The Journal.)

North Yakima, Wash., Oct. 31.—Announcement has just been made of a new bank that is to be organized at Mabton, in the southeastern part of the county. The incorporators are: J. D. Farmer of Minneapolis, Dr. C. B. Alexander of Mabton, and Ward H. Wheeler of this city. The bank is to be opened about December 1. As the Mabton flats are to be opened next summer considerable interest is being manifested in real estate there. A number of new residences are now being constructed and several other important enterprises are under way.

BAD CHECK MAN DECAPS.

Man Who Victimized Astoria Merchants Forfeits Bond.

(Special Dispatch to The Journal.)

Astoria, Or., Oct. 31.—The examination of Sam Marcho and Singer, charged with issuing checks to five different merchants without having funds in the bank, took place this afternoon. Singer, who was released on \$200 bonds, failed to appear. Marcho's case was dismissed as it is known that he had no hand in issuing the checks.

VALE TO ENTERTAIN.

Development League Will Hold Annual Convention There.

(Special Dispatch to The Journal.)

Vale, Or., Oct. 31.—According to a decision just reached by the committee on the forthcoming annual convention of the Oregon Promotion and Development league will be held at Vale. The date has not been fixed but will be early in December. Vale people will provide entertainment for the delegates. An interesting program is being prepared and the subject of good roads will be prominent among the matters discussed.

FUEL SHORTAGE RELIEVED.

Settlement of Strike Eases Situation at Vale.

(Special Dispatch to The Journal.)

Vale, Or., Oct. 31.—The fuel famine here has been relieved temporarily by the arrival today of a carload of coal. The dealers claim that there will be no further difficulty as the strike at this city has been settled. Residents of the city are giving big orders for coal so that they may not again be up against a shortage.

JACKSON'S WEALTH INCREASES.

Assessed Valuation Shows Advance of \$3,863,708.

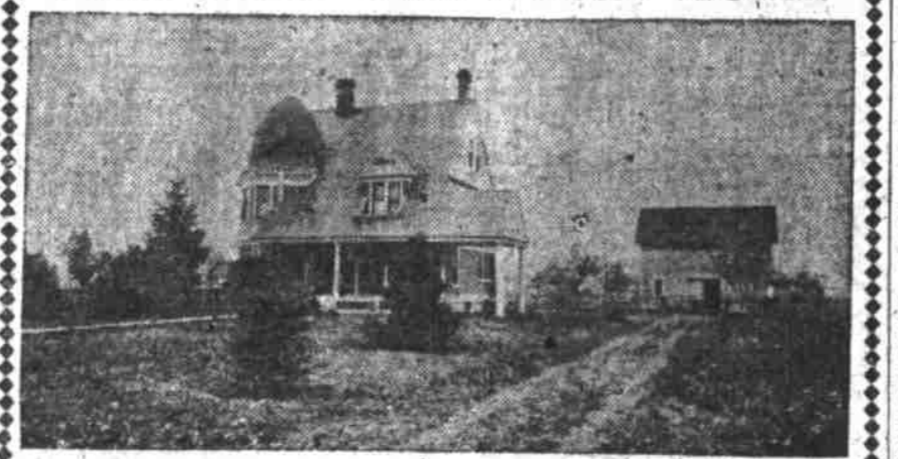
(Special Dispatch to The Journal.)

Jacksonville, Or., Oct. 31.—The final returns of the county board of equalization of taxes for Jackson county show a total assessed valuation of \$26,669,946. This is an increase of \$3,863,708 over last year.

NATIONALITY QUARREL LEADS TO BAIL MONEY

Did the pot call the kettle black? This will be the question propounded to Municipal Judge Van Zante Monday morning, when H. Singh, a Hindu, comes up for trial in the police court charged with disorderly conduct. Singh was arrested by Plainclothesmen Craddock and Hyde in a saloon at Second and Burnside streets at 9:30 last night after he had quarreled with another Hindu on a matter of nationality. Singh was released on \$30 bail raised by his friends.

We MUST Sell THIS FINE SUBURBAN HOME



One acre and a half ground. This extra well built 8-room house, 2 fireplaces, large living-room, good plumbing; remarkably fine view of Mount Hood; large barn for horses and auto; good fruit; facing macadam road into city and near Mount Scott carline; plenty good water; good neighborhood. For a home or investment, \$5,500, with terms, is A-1 bargain. See us or owner at once.

B. S. COOK & CO.
503 CORBETT BUILDING

IN ALL THE WORLD NO VIEW LIKE THIS

Council Crest Park

THE IDEAL RESIDENCE SECTION OF THE CITY

NO OTHER TRACT IN THIS CITY OFFERS THE ADVANTAGES WHICH COUNCIL CREST PARK ENJOYS.

It joins the fashionable residence district.
It is twenty minutes from the heart of the city.
It is beautifully parked and landscaped.
It commands the most magnificent view in the world.
It is 1,200 feet above the city.
It has a pure and invigorating atmosphere.

PHYSICIANS SAY: ON COUNCIL CREST THE ATMOSPHERE IS BEST. EACH BREATH YOU DRAW IS FULL OF LIFE, ITS GOOD FOR YOU AND FOR YOUR WIFE.

Bull Run water, graded streets, cement walks, electric lights, telephone, unexcelled car service, and building restrictions.

BUY TODAY

Prices Will Be Advanced November 10

The price of lots at Council Crest is very small and Sharkey would be pleased to have you call. He has bargains-very great in this section up-to-date, and locations that please buyers, one and all.

LOTS NOW \$500 AND UP
10% Down—Easy Terms—\$10 Per Month

JNO. P. SHARKEY CO.
MAIN 550 122 1/2 SIXTH STREET A-1550
AGENTS ON THE TRACT ALL DAY

METZGER

Acre Tracts

\$200 PER ACRE UP

EASY TERMS—10 PER CENT DOWN, 3 PER CENT MONTHLY.

THE ELECTION

No matter which way the election goes Metzger Acre Tracts will enhance in value. Whatever "Bill" is introduced in Washington everything will be in Oregon's favor and the state will continue its grand march of progress and prosperity. Metzger Acre Tracts are right on the line of progress—only 30 minutes out on the Oregon Electric line on the west side of the river and not impeded by river or bridges so that it is the cheapest, close in property in the vicinity of Portland. Ideal situation, fertile soil, none better for fruit and vegetables. Seeing is believing—See it today. Take car at Jefferson and Front streets.

HERMAN METZGER, Owner

226-228 Front Street, Portland—Phones, Main 474, A-137.
Metzger Branch Office—Phone, Main 6409.

SWEENEY'S FIRST ADDITION TO BANDON

Offers investors and Homeseekers the opportunity of a lifetime to get a home-site that will constantly increase in value as the city grows. No other location in Coos County offers as much in climate, and natural resources as the town of Bandon offers to those seeking an ideal place to build a home. It will pay you to investigate farther. Call at office or enclose 2c stamp for handsome booklet "Bandon-By-The-Sea." Address

FRANK A. SWEENEY ROOM 32 LAFAYETTE BLDG. PORTLAND, OREGON