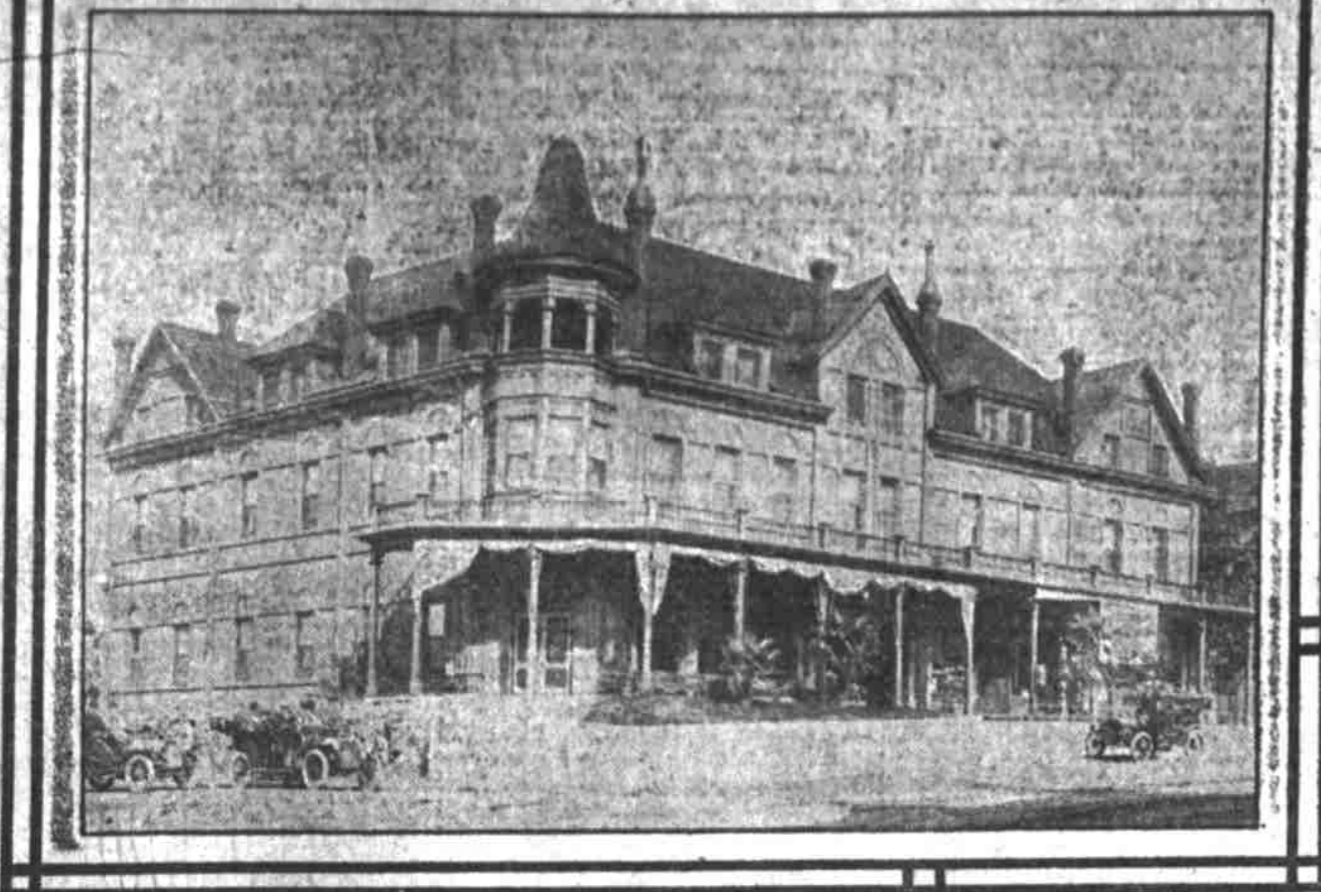


ASHLAND: THE GATEWAY TO SOUTHERN OREGON



Oregon Hotel, Ashland, and View of Main Street.

Ashland, Or., Oct. 3.—A city does not grow within itself and out of its own resources. There must be a cause for a city, a country back of it. Trade must flow naturally to build a city as water flows into a lake. Where all these conditions are favorable the building of a city is certain as the growth of a plant. Commerce, like science, and it is commerce that builds every city. Trade and manufacture are the industries that bring together a large population.

Ashland has the natural resources for development. It may be that the material is not being used. It may be that Ashland does not realize its own resources. Whether conscious or unconscious, however, is a question we shall leave for the citizens themselves to answer.

Hope of Cities. Every city longs for greater prosperity. Every city hopes for commercial power and municipal advancement. The fault of nearly all ambitious cities is that they look for the growth to come from without instead of within. Ashland has the element and resources that will bring growth and prosperity. It needs a little pushing, and it is receiving it from some of its best citizens. The city already has a fine start. It has a location. It is favored by nature with scenic beauty. It has the best and most permanent water supply in the valley. It has electric light and power in abundance.

A glowing new life has come upon the city of Ashland. The past summer has been one of great prosperity, and the people go into another autumn with a good feeling and high promise of solid prosperity. All the army of

industry has been at work at good wages. It is the proper destiny of every 10 and 20-acre tract of land in the vicinity of Ashland to be occupied by the farmer, fruit grower, or dairy man. It is plain that the frontier is receding. The wilderness is losing ground every day. The home-makers are passing this way, and the vacant lands are giving way to the fields and the orchards.

Active School Life. While the final end and aim of all school instruction is to impart knowledge and mold character to make strong men and women of the children, and to start the young people on the journey of life better prepared for its struggles and to get more out of its joys and opportunities, the first consideration must be for the physical well-being of the children. This means that proper buildings and equipments are absolutely necessary. The best results are not possible and cannot rationally be expected from children who are compelled to spend their school days in badly heated, worse ventilated, poorly lighted and unsanitary school buildings.

All this Ashland has fully realized and has accordingly done her duty generously and intelligently. In nothing more than the school buildings of the city is the character, the spirit and high purpose of the citizens of Ashland revealed to good advantage. The city has two excellent school buildings.

High School. The high school has an enrollment of 150 and the graded schools an enrollment of 850. The citizens of Ashland as well as the board of education were very fortunate in securing the services of W. P. Cameron as superintendent of city schools. He is not only an able and efficient educator, but he is a constant, intelligent, continuous worker for the public school, which means for the

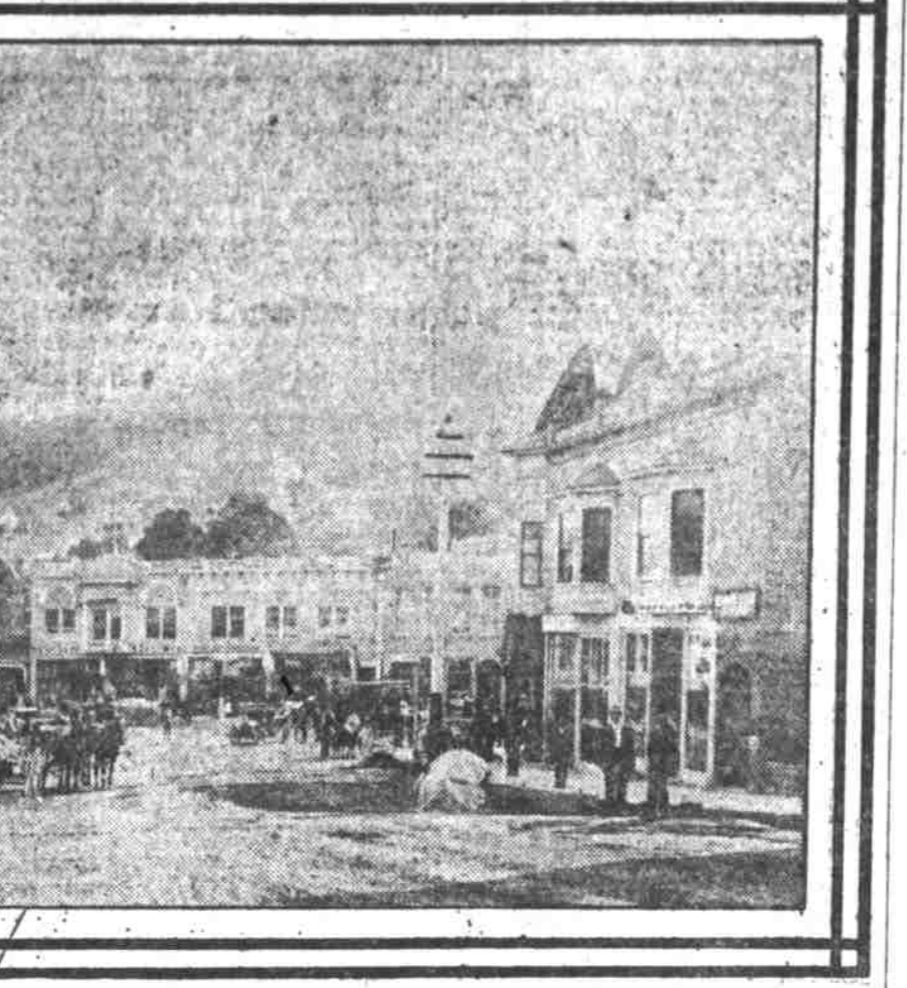


best interest for the city. The Southern Oregon State normal, located at Ashland, is presided over by Harry M. Shaffer, and has an enrollment of over 300. The Commercial college has an attendance of 65 students, under the able management of Professor P. Ritter. The lure of gold, the call of the west, the love of adventure, has hastened it

not formed the present tidal wave of homeseekers to Oregon. The hunger of the Americans for cheap land, and for productive land, can be supplied only by the irrigation ditch. Homes for the industrious farmers of the over-crowded states farther to the westward are to be found around Ashland under most favorable conditions. There is no public land open to entry, but there is plenty of land on the market at \$15 to \$30 an acre, lands located in the immediate vicinity of Ashland well at high prices. In one respect, Southern Oregon has an advantage over other parts of the state, because the mining regions are mostly contiguous to the farms, orchards and towns. Hence supplies are easily obtained at reasonable prices. An important factor of mining in this state is the fact that water and timber are abundant. The mountains are clothed with magnificent forests of pine, fir and cedar, and from under their shadows many trickling rivulets unite to form a babbling stream.

The sheep industry both to the east and the west of Ashland is of considerable importance, while the raising of

is to break upon splendid mountains in



beef is not one of the leading industries. The dairy interests, however, is attracting more and more attention. Ashland has one creamery that has paid the farmers over \$55,000 for butter in the past year. There are many small truck farmers, not only to supply the home demand but much of their product is shipped by rail to other cities.

WAR IS STARTED ON GREAT WHITE PLAGUE

Greatest National Danger Attacked by Experts at Washington Congress Who Plan to Study Disease and Attempt Its Alleviation and Possible Cure.

By Frank Irvine. All last week the eyes of Christendom were focused on the city of Washington. The nations had gathered there seeking succor and reprieve from a malady that is as old as man, and that from the beginning has been the scourge of the race. Nearly 400 menably perished of tuberculosis every single day in this country. This does not mean today only but yesterday, the day before, countless days before that, and tomorrow, and countless days down the future. If we were in the midst of a devastating war in which the battlefield every day is the week, every week in the year and every year in the century for ages would be strewn with 400 dead, hearths and homes would be shaken with the horror of the calamity.

Greatest of Calamities. When the news of the Johnston flood was flashed over the wires, telling of a few hundred victims lost, the

country stood appalled. When the lives of 175 human beings were suddenly snuffed out in the Iroquois theatre holocaust, the millions throughout the nation were horror-stricken. The awful consternation that swept from ocean to ocean and that held the country aghast for weeks as a result of the few hundred lives destroyed at San Francisco is still a dismal memory. Horrible as these catastrophes were in the loss of life, what are they compared to the scourge that every 24 hours in this country sends 400 souls by a wasting and wretched malady into eternity?

The notable gathering at Washington was a desperate rally of man in the effort to exterminate tuberculosis. It was the International Tuberculosis congress, made up of the foremost scholars and scientists from every part of the civilized globe. They are a compendium of the accumulated knowledge of the ages on the subject. In its conception, greater than any other congress that ever assembled; greater even than the Hague Peace conference; greater than any meeting of the nations that has transpired at any time, in any place or anywhere, this assemblage is a mighty contrast to the serried ranks and panoply of armies to the cantonments of battle fleets, or the gilded palaces and enterprises of massed wealth and marauded fashion. It is the best voice of man, speaking comfort and hope to the millions. It is the best in the history of the world in mercy to help the dying multitude. It is the noblest impulse in human nature seeking for and finding utterance in the exposure of the disease that has been known, and of all that is planned for, and hoped for in defending the human race from this disease that means a science says kills more people and causes more invalidism than any other known calamity.

Old as Sin. Tuberculosis may have stolen with Milton's Satan into the garden of Eden. That it was known to the ancients is shown by inscriptions on tablets in Babylonian remains, the earliest known records. Passages in the Bible indicate that it may have been known to the Egyptian doctors who were entrusted with the embalming of the dead. 1500 B. C. Moses declared it to be a curse or disability of the law and the Talmud mentions the recognition of tuberculosis in cattle.

In 460 B. C. was first to give an intelligent description of the disease. He and other writers of that epoch believed the disease was caused by irritation of the lungs, due to flux of mucus of the body flowing from the head into the air passages, and causing irritation, by retention of the secretion in the bronchial tubes. They believed in the curability of the malady in all stages and advised change of residence. Its contagious character was mentioned by Socrates in the Hippocratic era. Centuries ago, wrote of the disease in three forms—atrophy, catarrhs and ulceration. In A. D. 500 Avicenna gave a clear description of the disease, and recommended treatment of sea voyages and country air. In 1211 to 201, considered the malarial an ulceration, and sent patients to the high lands of Phrygia.

Beginning of Study. No further light was shed on consumption until the year 1844, when thereafter, when anatomical studies began. Bivillius, 1835, gave a careful description of the symptoms, and asserted its contagious character. The heredity theory was first taught by Morton in 1858, and in 1866 Morgagni argued the extremely infectious character of the disease, on which account he refrained from doing autopsies on his victims. Boscainius, 1866, founder of Russ-

URGE POPULISTS TO HELP BRYAN

Executive Committee Shows Why Taft's Policy Is Against the People.

The executive committee of the Populist state central committee of four years ago has issued a statement to the members of the party in Oregon, advising that the members of that party cast their votes for William Jennings Bryan. The statement is as follows: Portland, Or., Oct. 1.—To the Populists of the State of Oregon.—In compliance with the wishes of many old-line Populists, and in obedience to what seems to be a patriotic duty, your committee of four years ago now asks your earnest consideration of the following suggestions:

Death Rate High. No other disease is so widespread, produces so much poverty and so long continued distress. From one seventh to one tenth of all deaths, and an enormous proportion of invalidism are due to it. Kayserling stated at the Tuberculosis congress in 1905 that one third of all deaths and one half the sickness among adults in Germany can be charged to tuberculosis. Newell declares that 11.3 per cent of all deaths in England and Wales are still due to it. The latest United States census gives the total deaths from all known causes in 1905, at 1,110,000, the rate being 139.9 to 1,000 inhabitants, or about one ninth of the deaths from all known causes in Germany, with a population of 56,000,000, the deaths from it the same year were 13,706.

The months of greatest mortality are March, April and May. The period of greatest mortality in a lifetime is from 15 to 45. The estimated cost of tuberculosis in the United States is placed as high as \$250,000,000 annually. Biggs estimates the cost to New York alone at \$22,000,000 a year. The Tuberculosis congress, with its tremendous problem for humanity's sake, is a shining example of the kind of thing that should be the radiance of a benign hope throughout the world.

Experiments made in compressed air by two English physicians demonstrated that divers can work at least 210 feet under water without danger of death from the pressure.

Scott's Emulsion

does all it does by virtue of one thing—Power—its power to create power. As fire turns water to steam so Scott's Emulsion transforms thin, impure blood into pure, rich blood, giving nourishment and vital energy to every organ, every tissue and every muscle.

overshadow all others that it would only belittle the importance of the present campaign in favor of the tariff, currency or other hackneyed subjects.

It is to the honor and glory of our state that it was the feat of all the states of our Union to carry the star spangled banner of the people's rights to the front, and to triumphant victory in constitutional amendments, forever securing to the people the right to make their own laws and choose their own leaders by direct legislation—many a direct primary. And it is to the honor and glory of the old Populists that they led the battle for these rights of the people. And now half the states of the Union, and more than 50 cities of our country, are following where Oregon led the procession. We cannot now afford to take any backward step.

And now for these considerations, and at this crisis of public affairs, we appeal to our fellow citizens, the battle-scarred veterans of the old Populist party, and respectfully and candidly submit the question: "Ought we not to vote for William J. Bryan, rather than for William H. Taft?"

Respectfully submitted, A. P. NELSON, Chairman, ERNEST HARTON Sec'y, E. KIMMER, WILLIAM D. HALL, GEORGE OGLE.

FRISCO COAL BUNKER BURSTS INTO FLAMES

(United Press Leased Wire.) San Francisco, Oct. 5.—A fire smoldering in the bunkers of the Pacific Coast Coal company at Beale and Bryant streets burst into flame early today, and for two hours threatened adjacent warehouses and shipping. After a five hours' fight the firemen had the blaze under control, although relief lines will be needed for a week or more, as the mass is thoroughly drenched. The flames devoured 4,000 tons of coal and destroyed a portion of the company's offices and warehouses on the Beale street wharf. The damage is approximately \$100,000 to \$150,000. Beside the total loss of the bunkers, the yard of the Standard Box company

CARTER'S LITTLE LIVER PILLS

CURE SICK HEADACHE Sick Headache and relieve all the troubles that suffer from indigestion, but first get rid of the cause. Bile, Dizziness, Nausea, Drowsiness, Distress after eating, Pains in the Side, etc. While their most remarkable success has been shown in curing

And on the question of electing senators by direct vote of the people, Mr. Taft said in a public lecture at Yale university some years ago, that "No law should be passed which would take away the support of a majority of the people, and any law enacted without popular assent would be null and void." He said as senators cannot be so elected by the people without the United States senate first submitting the necessary law, it follows that all efforts to select United States senators under our direct primary laws are, according to Mr. Taft, unconstitutional.

On these two great questions, the most important of all those at issue in the present campaign, Mr. Bryan, the Democratic candidate, is directly opposed to Mr. Taft, and stands solidly with the people, and has publicly every-where proclaimed direct election and popular election of United States senators for the last 20 years. On these two great questions he has the right and liberty of every freeman, every old Populist should make the choice.

The two great questions so overlaid and

And on the question of electing senators by direct vote of the people, Mr. Taft said in a public lecture at Yale university some years ago, that "No law should be passed which would take away the support of a majority of the people, and any law enacted without popular assent would be null and void." He said as senators cannot be so elected by the people without the United States senate first submitting the necessary law, it follows that all efforts to select United States senators under our direct primary laws are, according to Mr. Taft, unconstitutional.

On these two great questions, the most important of all those at issue in the present campaign, Mr. Bryan, the Democratic candidate, is directly opposed to Mr. Taft, and stands solidly with the people, and has publicly every-where proclaimed direct election and popular election of United States senators for the last 20 years. On these two great questions he has the right and liberty of every freeman, every old Populist should make the choice.

The two great questions so overlaid and

was attacked by the flames and loss lumber was destroyed. Three alarms were sent in and it was four hours before the first detail of engines was allowed to depart. Sixty squares of poles were sent to protect the goods removed from nearby warehouses and to prevent looting. Several firemen were overcome by the fumes of the burning coal, but none was seriously injured.

Companies Incorporated. (Sales Office of The Journal.) Salem, Or., Oct. 5.—Articles of incorporation have been filed in the office of the secretary of state as follows: McKensie Valley Irrigation & Power company; principal office, Springfield; capital stock, \$5,000; incorporators, J. A. Youngren, Travel Neesham, H. E. Phelps and William Platt. Fielescher Real Estate & Investment company; principal office, Portland; capital stock, \$10,000; incorporators, U. N. Fielescher, Marcus Fielescher, Emma Goldsmith, Hattie Blumauer and Lillie Levin. Palmer-Libbey Logging company; principal office, Portland; capital stock, \$25,000; incorporators, E. E. Covert, G. W. Stapleton and Wallace Eastman.

FEROCIOUS BEARS NEAR SLATE CREEK (Special Dispatch to The Journal.) Boise, Idaho, Oct. 5.—Owing to the ferocious attitude of numerous bears in the vicinity of Slate creek near Wallace, and in response to many complaints coming from settlers in that section, Sheriff Bailey of Shoshone county has assigned Deputy Sheriff Hamilton to the duty of going over the section with guns, traps and ammunition and killing off some of the animals, a sufficient number at least to insure the safety of the residents in that part of the state. The number of bears there is the largest known in many years.

Boise, Idaho, Oct. 5.—State Bank Commissioner Chaney has commissioned the Twin Falls Bank & Trust company of Twin Falls and the First State bank of Richfield, Lincoln county.

The Richest Man in America

cannot give his stomach anything better than

Shredded Wheat

and yet two biscuits with milk, a little fruit and a cup of coffee will supply all the nourishment needed for a half day's work at a cost of seven or eight cents—and its daily use means good digestion and freedom from bowel disorders. Your grocer sells it.

Heat in Oven Before Serving.

COOKING MADE EASY

NO DIRT OR FIRE

Electric cooking utensils of all kinds. When not in use all expense avoided by simply turning off the switch. Coffee Percolators, Toasters, Chafing Dishes, Ovens, and many other devices.

SEE EXHIBIT AND DEMONSTRATION AT SEVENTH AND ALDER STS. STORE DAILY

PORTLAND RAILWAY LIGHT AND POWER COMPANY

PORTLAND, OREGON

M6688 PHONES A6131