

GENERAL LINES of the NEW TAILORED SUITS for WINTER



Photo by Felix.

Dreccoll model in cloth, showing the new long sleeves, the coat with revers, the high skirt and the vest with lapel of Irish lace.



Photo by Manuel.

Winter tailored suit by Dreccoll, the jacket of silk rep, the skirt of cloth.



Photo by Manuel.

Directoire costume by Lucy Hamar.



Photo by Manuel.

A beautiful Directoire costume of Raudnitz. Note the large revers and cut of the jacket in front.



Photo by Manuel.

Tailored suit by Chary with long jacket of velvet, striped and cloth skirt trimmed with velvet bands.

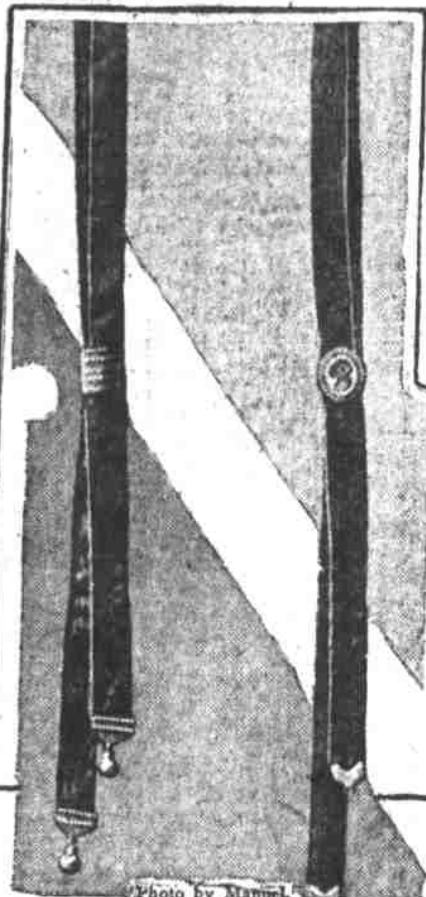


Photo by Manuel.

Some of the new ribbon cravats with imitation pendants. Note the miniature slide on one.

It takes but a glance at the new autumn and winter models to realize that suits of tailor make are designed with longer coats. In fact, both plain and fancy suits are made with jackets so long that they reach almost to the knees, although truly most of them are quite short in front.

The styles of the Directoire period are paramount this season. Take, for instance, the beautiful creation of Raudnitz, with jacket cut abruptly away in front and large revers—this is almost the pure incroyable.

At the present time it is quite the correct thing to have a costume with the skirt of cloth, while the coat is of velvet or the heavy rep

silk which Dreccoll has made so fashionable. Indeed, the coat may be of a different color as well as of different material. Dreccoll has designed a dress of pewter gray to be worn with a coat of black silk rep—a lovely combination.

Most of the skirts extend above the waist line in corselet style, so even when the incroyable coat is worn with a blouse of white tulle, no white line will appear at the waist to spoil the effect. The skirts are very plain and clinging, although the outline is soft and

graceful. They are cut either on the pure circular or the modified circular style, and the measure-

ment at the foot line is scant. The French woman may be depended upon to wear nothing that

is unbecoming, and the narrow and wide revers, the skirt is of corselet style and a vest of satin is finished with lapels of baby Irish lace. Every line of the suit is perfect and most becoming to the figure. In this the designer has indeed achieved a chef d'oeuvre.

One of the most charming suits of the season is the Dreccoll model of cloth. The coat has long sleeves

WHAT PARIS IS WEARING IN BELTS

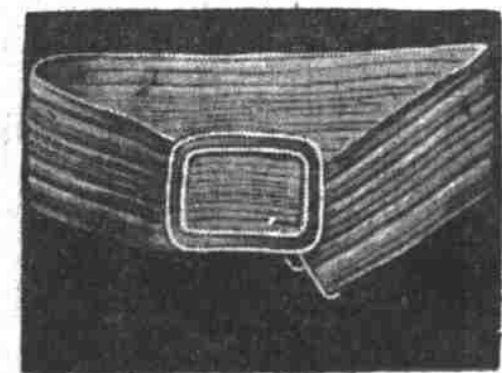


Photo by Manuel.

Plain, but full of style.

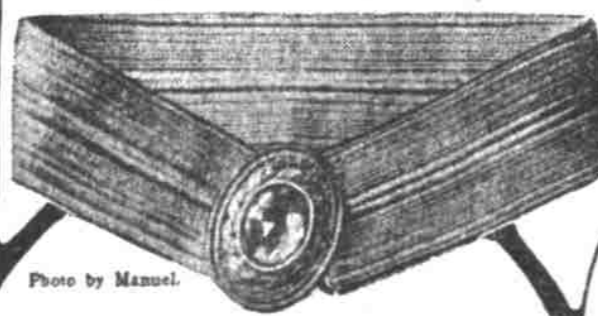


Photo by Manuel.

The dull gold buckle with large topaz in the center is very effective.

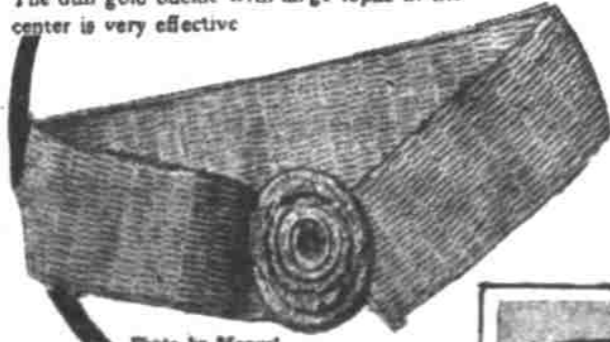
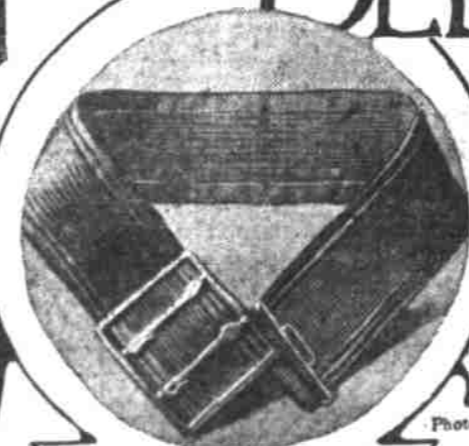


Photo by Manuel.

A belt that is pretty for a very slender waist.



The new form of elastic belt.

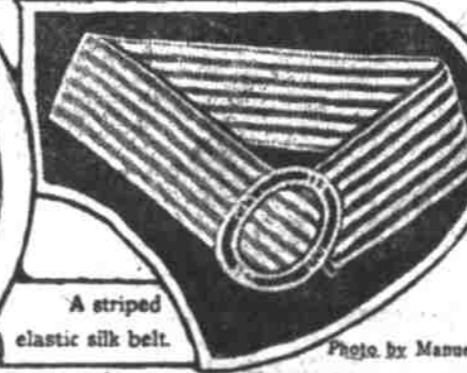


Photo by Manuel.

A striped elastic silk belt.

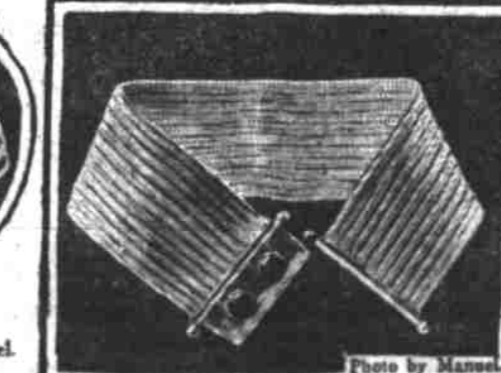


Photo by Manuel.

This elastic belt has a buckle like a barred gate, with two large stones set between the bars.

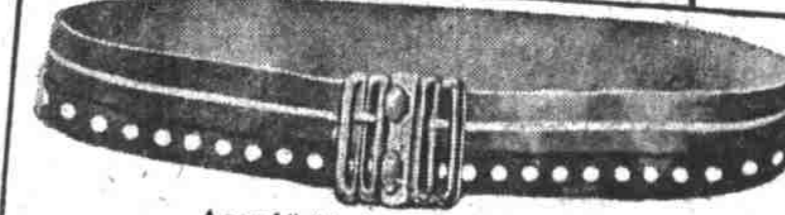


Photo by Manuel.

A novel "oilcloth" belt with large polka dots.

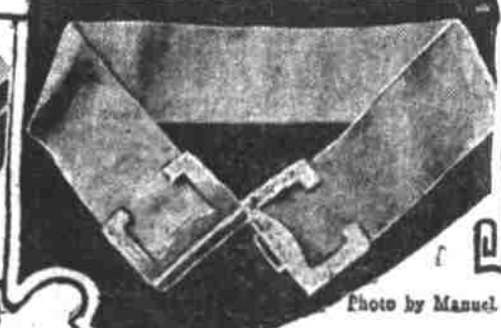


Photo by Manuel.

An entirely new belt buckle.

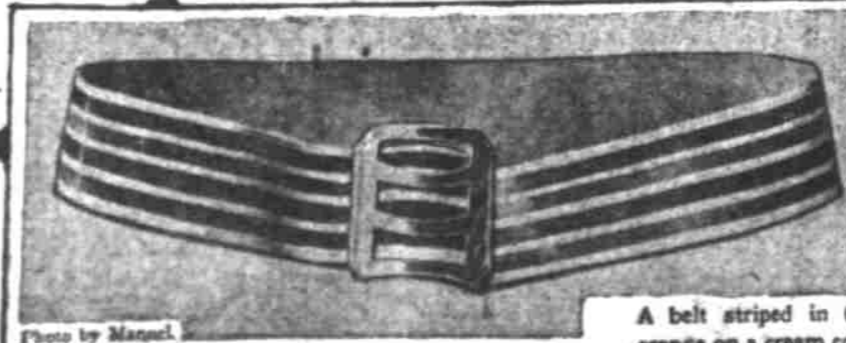


Photo by Manuel.

A belt striped in three colors blue and orange on a cream colored background.

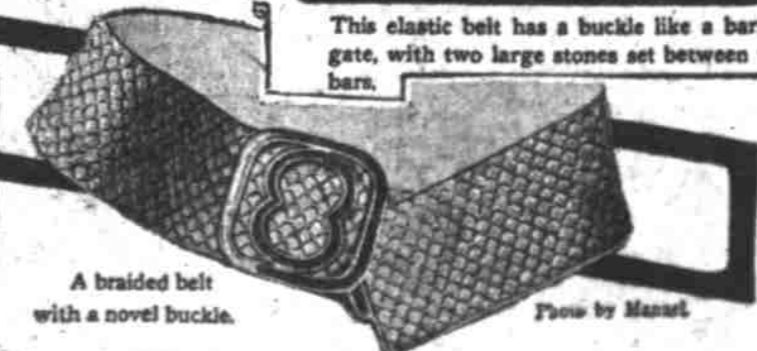


Photo by Manuel.

A braided belt with a novel buckle.

The new position of the waist line has caused changes in the style of belts for the coming season—first, in the width, and, second, in the design. There are, however, certain novelty belts which really encircle the waist line, designed to go with cloth costumes, which promise to be quite favorably received in the fall.

Among these are shiny "oil-cloth" belts in very brilliant colors, which must harmonize or contrast pleasantly with the shade of the gown.

Of course, it is best always for people verging on plumpness to avoid wearing conspicuous belts and girdles. The new French belts call for the diminutive waist of the average French woman and should be appropriated with careful discrimination by her American sister. The elastic belt has been a great favorite in Paris for some time and it has many advantages—it fits snugly to the figure and it does not become unshapely as does ribbon and kid.

Belts are not as wide as usual—this will be seen by the photographs

The plaited braid belt is a novelty and one that will go beautifully with a tailored suit. The striped belt—blue and orange on a cream-colored background—is extremely original and appeals strongly to the taste of the true Parisienne.

"Oil-cloth" plays a very large part in the girdles of the season, and the one with large polka dots, fastened by a very novel buckle, has been heralded with delight.

The belt with a dull-gold buckle

and a large topaz in the center is very effective, while another pretty belt for a slender waist has an amethyst set in the buckle.

It is an axiom in Paris that only slender women wear conspicuous buckles, but in America women

are too prone to wear whatever pleases them, regardless of the lines of the figure.

These belts are all of them intended to be used when a waist of tulle or other approved material is worn with a plain tailored skirt.

Cravats of Ribbon

An important novelty of the season is the little tie which fastens round the neck just at the base of the collar. These little ties were at first

made of black velvet, then they were of beads, and now they are of narrow grosgrain ribbon fastened with jeweled slides. Of course, they may be expensive or otherwise, according to the value of the mountings. Should the wearer possess but one tie, it would be better to pick out one with a plain gold slide or with a miniature set in

pearls. Should, however, she be able to match them to her various costumes, nothing could be more attractive than the oval slides containing precious stones, such as amethyst, turquoise and topaz.