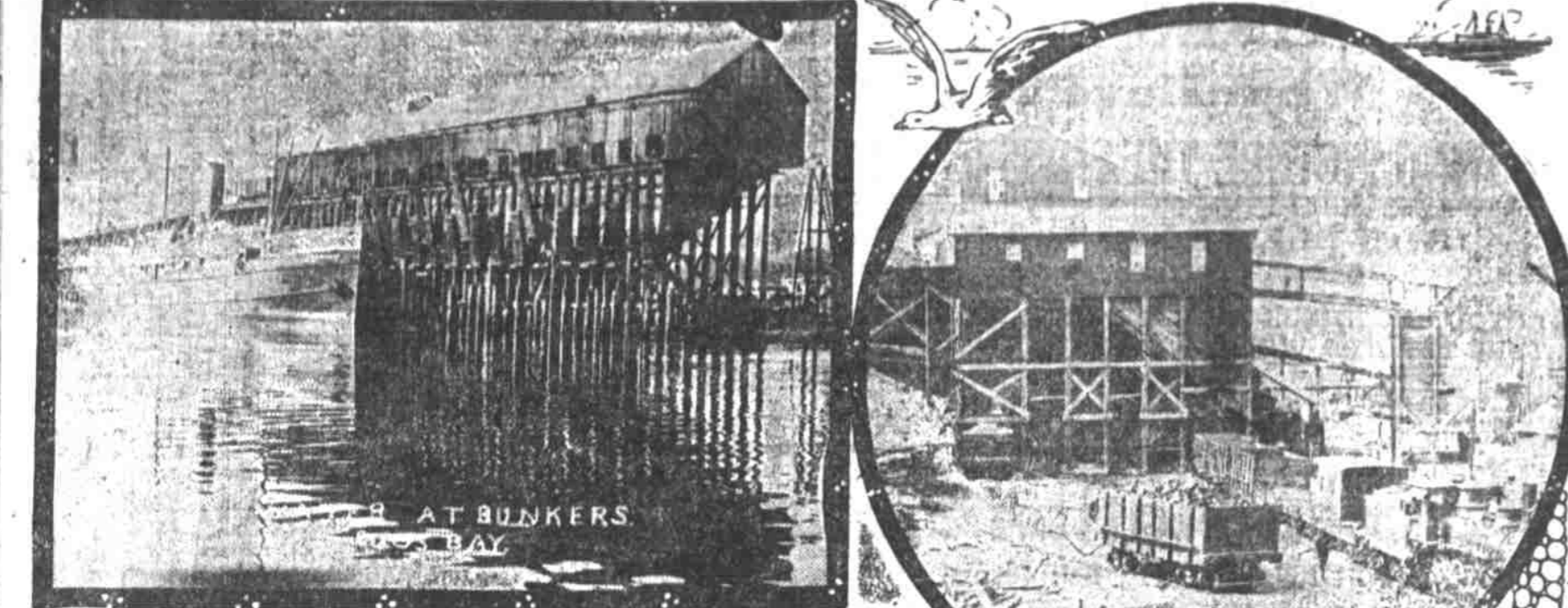
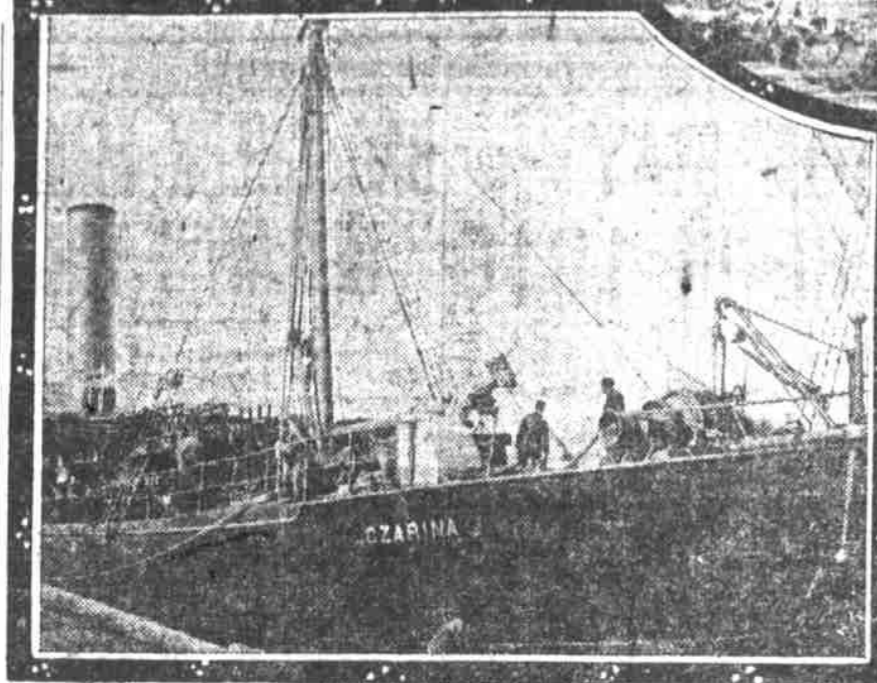


COOS BAY'S COAL OCCUPIES AN IMPORTANT PLACE IN THE WORLD OF COMMERCE ON THE PACIFIC COAST



AT BUNKERS
COOS BAY

By Carl Smith.
Marshfield, Or., Aug. 29.—A man with 18,750 cords of wood stacked up on an acre of his ground would no doubt consider himself in luck. If those 18,750 cords should suddenly be converted into an equal volume of fine domestic coal he would shake hands with himself several times. Here in Coos county there are estimated to be 400 square miles where the land bears this quantity of coal. Of course, the coal is under the ground, and cannot be seen as the stack of cordwood could, but it is there. That is one reason so many persons believe in the future of Coos Bay as a port and manufacturing center, independent of its other splendid resources.



Coal and coal begin with the same letter, and they will no doubt be more and more closely associated together as the extent and value of the fuel deposits of the county become known. Here is the only great bed of coal in Oregon or California, placed by nature on a harbor that with small cost can be made to float the commerce of the world, and already accommodates lines of coal-carrying steamers. This is an advantage that is looked upon by the citizens as a factor of the highest importance in bearing on the future development of the future city on this bay.

To emphasize this coal fact, a chunk of the warmthiving material that required four men to handle it was placed in a front window of the chamber of commerce building. In the building of the Oregon & Idaho Development congress, and several such chunks are on display at the fair this week. The specimens come from the Boyer Hill mine, owned by the Southern Pacific. At this and other mines of the county the output is now nearly 1,000 tons per day. The Libby mine, independently owned, turns out an additional tonnage. Although the Harriman interests are now foremost in actual mining operations, there is an abundance of fuel-bearing land in independent hands, and if the tendency to monopoly can be prevented there will be golden opportunity here for competitive capital.

MALHEUR FRUIT TREES GROAN UNDER LOAD

Bumper Crop of Apples, Pears and Peaches of Fine Quality in Eastern Oregon County

Malheur county has the largest fruit crop this year that has ever been experienced in that section of the state. Trees are being broken in many instances with the weight of the apples, pears and peaches, notwithstanding the fact that nearly all orchards were thinned fully 50 per cent. This bountiful crop is not confined to fruit alone; in fact, all farm and garden products seem to be competing with each other in an endeavor to see which can be the most prolific.

William Moritt, who lives two miles southwest of Ontario, from his three-year-old peach orchard picked and sold an average of 200 pounds of peaches to the tree.

Alfalfa will yield seven to ten tons per acre, 10,000 tons of which has been contracted for by one purchaser at \$3.50 per ton in the stack. Alfalfa seed is proving to be a paying crop, as some of the farmers say they will clear at least \$25 per acre from this source. Sugar beets look particularly good this year, promising to equal the highly satisfactory yield of 30 tons per acre two years ago.

Low Land Values.
While many orchards are yielding 11-60 per acre and alfalfa as high as \$32 to \$40 per acre, land values are exceedingly low as compared with other more extensively advertised districts of the state. A good irrigated orchard land can yet be had at from \$100 to \$150 per acre, including water rights. These prices will, however, experience a substantial increase over the prevailing prices at the present time, owing to the recent organization of commercial clubs which will bring the wonderful resources of their country to the attention of the general public.

Malheur county is in the extreme southwestern corner of the state, bordering on Idaho and Nevada, and contains some 2,784 square miles. Fruit raising that has been particularly successful there has been with apples, apricots, raspberries, blackberries, strawberries, peaches, pears, plums, prunes, nectarines, grapes and all the small fruits common to a northern latitude. In size, flavor, color and quantity compare most favorably with the products of the best known fruit districts in the northwest. Apples 12 inches in circumference, peaches 12, and Bartlett pears weighing 26 ounces are no rarity.

Three Crops of Alfalfa.
Alfalfa comprises the principal hay product and the conditions are particularly fitted for its growth. The coat of raising it is merely nominal and the hay crop is very strong in farmers there. Their chief value is in the extensive irrigation of three crops a year and the yield is often seven to ten tons an acre. It is easily and cheaply grown and gives large crops.

The estimate of 400 square miles for the coal area was made in a geological survey report in 1894. Since then there have been new discoveries. The big

split near the harbor entrance on the north is said to be underlain, and discoveries have been made near the headwaters of the Coquille river, a beautiful stream that flows through Coos county and is separated by a low divide from the Coos river valley. Coal croppings are at the surface in many places, and some farmers dig fuel from their own land with a pick.

Although the price has been boosted several times in the last few years, coal is still very cheap and the cost of mining is comparatively small. At retail in Marshfield the delivered price is now \$5.50 and \$6 per ton. Not long ago it was \$4. The cost of mining, based on a production of 2,000 tons per day, is about \$1 per ton.

Here is an analysis of Coos Bay coal by W. S. Chandler, an expert who has analyzed much of the data for government reports: Fixed carbon, 82.1 per cent; volatile matter, 12.60; moisture, 4.81; ash, 2.55. The large moisture element causes a sort of slaking process if the coal is left too long exposed to the rays of the sun. It will be seen that the coal is of the best quality.

That there will ultimately be a great system of mines in Coos, largely engaged in furnishing coal for the coastwise trade, and for the manufacturing interests that seem sure to come to the land of cheap fuel, is the confident prediction of many who have carefully looked into the situation. Coos has been given a monopoly by nature, and if monopoly by man can be averted, Coos Bay will profit immensely by its underground storehouse of wealth.

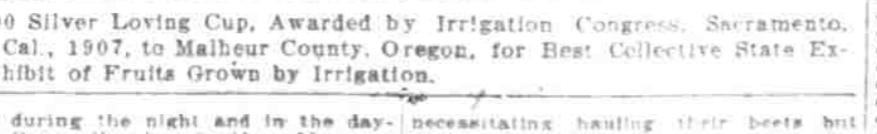
The chief tree grown in Malheur county is the cottonwood, which furnishes firewood. In the foothill country juniper and mountain mahogany appear; the former making good fence posts, the latter a very valuable fuel supply. In the western and northwestern portions of the county are some of the best fir, tamarack, which furnish lumber, fuel, posts and building material generally.

Hot springs are found in nearly every part of Malheur county, all of about the same character, while the most notable are those wells are of great value for medicinal purposes, and if properly improved would equal, if not excel any other in the state.

In sinking deep wells for artesian water in the vicinity of Ontario, a flow of natural gas was found that in two or three instances furnished enough gas to use for illuminating the residence of the owner, and at the same time a flow of artesian water was reported, the death of about 240 feet. Numerous indications of the presence of petroleum are found in this county.

There Are Some Stock Shipments.
Annual shipments—
Wool, pounds, 3,000,000 to 4,000,000
Cattle, head, 25,000
Horses, head, 12,000
Mutton, sheep, head, 50,000

Swear to the Crops.
In the advertising literature for Malheur county sworn statements are published concerning the output of various farms. J. M. Butler says that he has raised corn near Ontario with an average of 70 bushels to the acre, and alfalfa with seven tons to the acre which brought him \$9 if he fed it, and \$6 if he stacked it. P. E. Brown says he planted 200 Wisconsin apple trees on his land 10 years ago, and they yield on an average of 12 boxes each. He has now 600 trees on 10 acres, and last year sold his entire crop for \$1 a box. Many of his neighbors who did not sell at a previous contract price received as high as \$2.50.



\$500 Silver Loving Cup, Awarded by Irrigation Congress, Sacramento, Cal., 1907, to Malheur County, Oregon, for Best Collective State Exhibit of Fruits Grown by Irrigation.

necessary hauling their best but for short distance. Their land rents for \$20 per acre.
This is a good farming country, because hay is grown in plenty, and butter fat sells from 25 to 37 cents a pound. Those who have tried it claim the country is good for growing alfalfa. Alfalfa makes a good tissue builder, and with a little corn and barley, though thrives well. Alfalfa, the basis of the business in many states, is absent here.

Planting and Drying Fruit.
There is a fruit canner at Arwadia, which does a good business, and there are several fruit drying and evaporating plants. The mild climate is good for apricots, and the honey secreted by the alfalfa plants is excellent. Almost every ranch has its bee hives, where from 60 to 125 pounds are gathered by each colony yearly.
The town of the county are Ontario, Nyssa, Arwadia, Vale, Jordan Valley, Westfall and Malheur. The first

NEWS FORECAST OF COMING WEEK

Washington, Aug. 29.—Several events during the coming week will serve to quicken political activity throughout the country. William J. Bryan is slated for several speeches in the Dakotas and Minnesota. Judge Taft will stay at Middle Bass Island until the end of the week, when he will go to Cincinnati to remain until election day. Thomas F. Hagen, presidential candidate of the Independence party, will spend the early part of the week in Indiana and Ohio and will then start on a speaking tour of the northwestern states. Eugene V. Debs, candidate of the Socialist party, plans to leave Chicago Monday on a tour

that will take him to the Pacific coast. The big event of the week will be the formal opening of the Ohio Republican campaign at Youngstown, Saturday, at which Governor Hughes of New York will be the chief speaker. The meeting will practically mark the opening of the Republican campaign for the whole country, and the speech which Governor Hughes will deliver has been prepared with that fact in view.

Two State Primaries.
General state primaries will be held in Michigan and Wisconsin. In Michigan the interest centers principally in the contest for the Republican gubernatorial nomination, in which Governor Warner is fighting for a third term and is opposed by two able opponents. In Wisconsin the interest revolves around the fight for the United States senatorship. Four candidates are engaged in a bitter fight for the Republican nomination. They are Senator Isaac Stephenson, who is a candidate to succeed himself; former State Senator William H. Hutton, Francis E. McGeerney, district attorney of Milwaukee county, and former congressman E. A. Cook of Neoshaw. The fight of Representative John J. Jenkins, chairman of the house judi-

ciary committee, to retain his seat in congress is also attracting attention.

O. A. S. Encampment.
The state election in Vermont takes place Tuesday, but in the opinion of the best political leaders of both parties the result will afford no reliable forecast of the national election to come in November.

The Atlantic battleship fleet will spend the week at Melbourne, where preparations have been made on the same elaborate scale as at Auckland and Sydney for the entertainment of the officers and men.

The veterans of the Grand Army of the Republic and members of the various auxiliary organizations will meet in annual reunion in Toledo and at the same time the United Spanish War Veterans will hold their annual encampment in Boston.

A Large Order.
From the Washington Post.
A leading woman's magazine is demanding that men be as good as women. They seem to forget that the average man has a hard enough time being as good as he is.

SHOWER STICKS

We are showing some very neat Umbrellas this season. Included in the lot are plain and fancy handles of all shades and qualities of coverings.

A Special Rain Stick at 98c

HAND-BAGS AND PURSES REDUCED

A special sale of Ladies' Hand-bags and Purses for a few days. The lot includes Walrus, Seal and Pin Seal, and the colorings are tans, grays, greens, lavender, etc., in shades to match any costume. All bags and purses displayed in Washington street window included in sale.

\$ 3.00 Bags and Purses.....	\$ 2.25
\$ 4.00 Bags and Purses.....	\$ 3.00
\$ 5.00 Bags and Purses.....	\$ 3.75
\$10.00 Bags and Purses.....	\$ 7.00
\$12.00 Bags and Purses.....	\$ 7.50
\$15.00 Bags and Purses.....	\$12.00
\$25.00 Bags and Purses.....	\$18.75

A NEW SHOWING OF FINE CHINA

We are showing a new line of fancy China in the Gift Room, third floor. It's all imported—German, Austrian and French ware—in the very best grades and latest decorations. Included is an assortment of fine hand-painted China Vases, etc. The showing includes many other articles besides those mentioned below.

Plates, priced from.....	35c to \$12.00
Cups and Saucers, from.....	45c to \$ 7.50
Salad Bowls, from.....	85c to \$13.50
Creamers and Sugars, pair.....	75c to \$ 9.00
Spoon Trays, from.....	65c to \$ 3.00
Celery Trays, from.....	85c to \$ 4.50

These goods can be purchased by the piece or in sets to suit, and we are pleased to quote prices at any time.

Store Opens Sunday From 10 A. M. to 2 P. M.

VICTOR TALKING MACHINES

ON ONE MONTH'S Free Trial

Ask About Our Liberal Offer Free Concerts Every Evening

We Take Canadian Money at Face Value

WOODARD, CLARKE & CO

FOURTH & WASHINGTON

Let Us Do Your Picture Framing

Neglect Yourself and the World Will Neglect You

GOOD TEETH ARE A PASSPORT IN BUSINESS AND SOCIETY.

A mouth filled with white, strong teeth is the most striking feature of the face. Neglect your teeth and you are sure to suffer physically and probably financially. The day when slovenly people succeed is past. If your teeth ache or you notice a cavity in one of your teeth, have it attended to at once. A stitch in time saves nine.

Those missing teeth don't look well. If you will call at this office we will make a bridge for you that will look as well and chew your food as well as natural teeth. This work is accomplished without plates and is one of the greatest triumphs of modern dentistry.

When no sound teeth remain, then we make plates that fit perfectly.

GOOD SET OF TEETH ON RUBBER PLATE.....	\$5.00	BEST SET OF TEETH ON RUBBER PLATE.....	\$8.00
--	--------	--	--------

DR. B. E. WRIGHT PAINLESS DENTIST

342½ Washington Street, Corner Seventh

OFFICE HOURS—8 a. m. to 6 p. m. SUNDAYS—9 a. m. to 1 p. m.

Phone Main 2119. Twelve Years in Portland.

PIANO SALE

Monday morning early we will tell you a fine piano at a fair price. Every piano marked in plain figures. Every figure is right. Every piano worth what the figures say. Before you buy you will visit our store and see our pianos. This will convince you that you can do better here than elsewhere.

Sherman, Clay & Co.
OPPOSITE POSTOFFICE.
A. B. Chase Player Pianos.