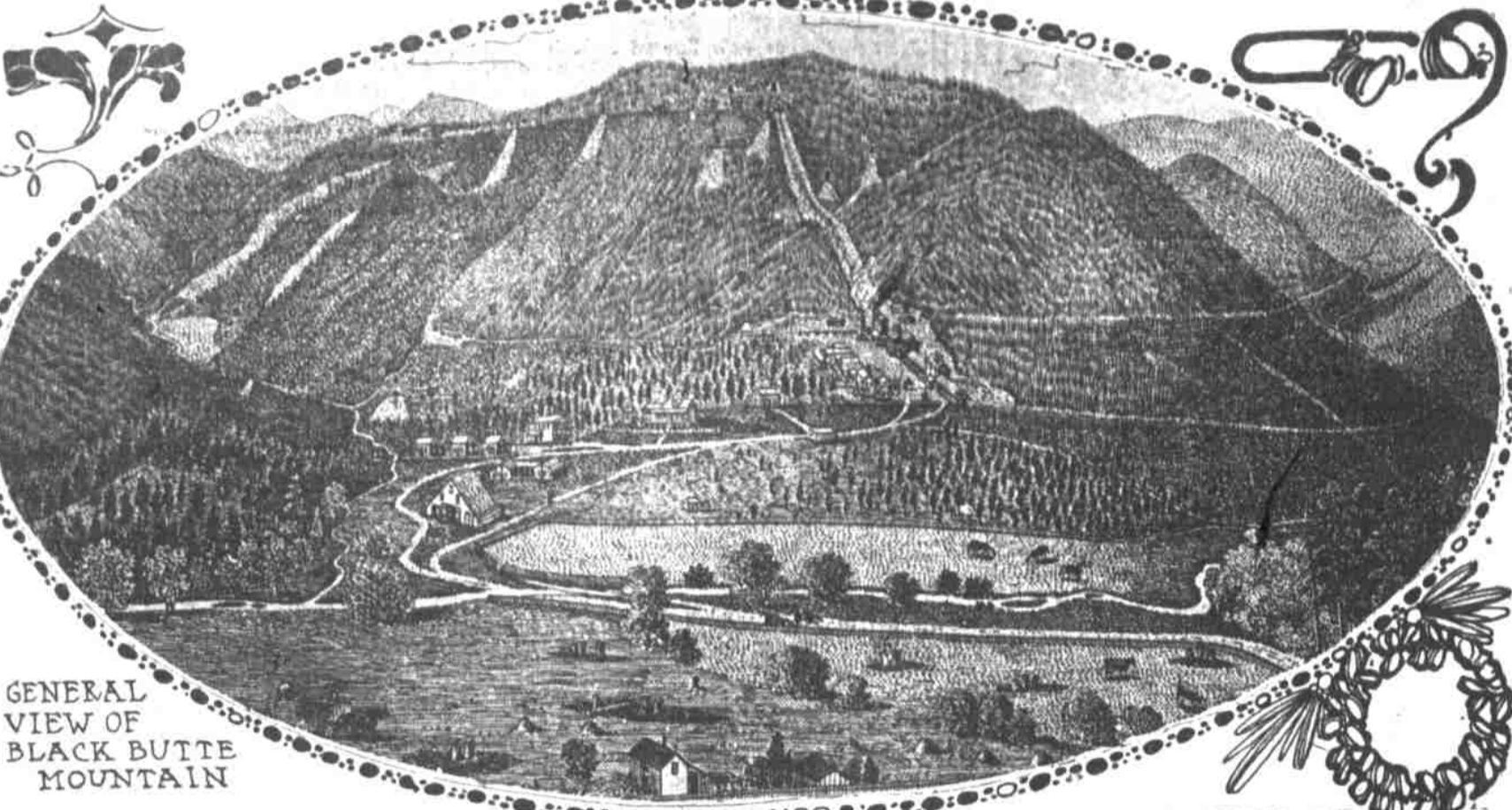


MINING FOR QUICKSILVER AT BLACK BUTTE, OREGON



GENERAL VIEW OF BLACK BUTTE MOUNTAIN

To develop a great mine calls for a degree of faith and quality of intelligence far above that required for success in ordinary commercial pursuits.



ONE OF THE GREAT ORE EXPOSURES AT BLACK BUTTE MINE'S

The Black Butte Mine. These prefacing remarks appropriately introduce the subject of the Black Butte Quicksilver mine, an industry of Lane county, Oregon.

prosperous and up-to-date farming sections of Lane county. Every farmer and farmer's son has had a job of work when he wanted it.

not only all the requirements of the mine, but also sufficient power for electric transportation from Eugene to Oakland.

Wiley B. Allen Co. is Reestablished in the Northwest. Thousands of people will be interested in the arrangement by which the Wiley B. Allen Co., who at one time had the largest piano and sheet music establishment in Portland.

NEWS FORECAST OF COMING WEEK

Will Be Big With Political Events—Lincoln Commemoration.

(Special Dispatch to The Journal.) Washington, Aug. 15.—Political speeches by Mr. Taft and Mr. Bryan, the nomination of John S. Sherman, and his nomination for the vice-presidency on the Republican ticket.

PIANO QUALITY

The quality of the piano you buy will soon be apparent. A cheap piano sounds very well at first, but the pieces of honest construction and work will give you a lifetime of satisfaction.

Sherman, Clay & Co.

OFFICE POSTOFFICE "The Home of Dependable Pianos"

PLUM SEEKERS FEAR NEW LAW

Complicated Technicalities Will Confuse the Voters, They Say.

(Special Dispatch to The Journal.) Olympia, Wash., Aug. 15.—Practical disfranchisement of many voters in the primary election is feared by leading political leaders of the difficulty that will be found by the average voter in making the ballot.

VIOLA-MOSCOW LINE NEARLY COMPLETED

(Special Dispatch to The Journal.) Viola, Idaho, Aug. 15.—Construction work on the Inland Electric from this place to Moscow is about completed, and in a very short time trains will be in operation.

DEFENSE MUST ASK MERCY FOR WRIGHT

(Special Dispatch to The Journal.) Sacramento, Cal., Aug. 15.—Although an attempt was made yesterday to induce District Attorney Washburn to move for a dismissal of the case against former Senator Eli Wright, one of the hoodlum quartet who jumped bail for \$2,000 and escaped.

BACK IN PORTLAND

Wiley B. Allen Co. is Reestablished in the Northwest. Thousands of people will be interested in the arrangement by which the Wiley B. Allen Co., who at one time had the largest piano and sheet music establishment in Portland.

At the suggestion of the Mead campaign committee and others, Attorney General J. E. A. Atkinson, who is himself a candidate for governor, has prepared a letter suggesting that the new voters of the state extend their efforts to educate the people regarding the true character of the law, and that prominent citizens provide more voting booths than have been supplied at all sections.

ROYSTON MFG. CO.

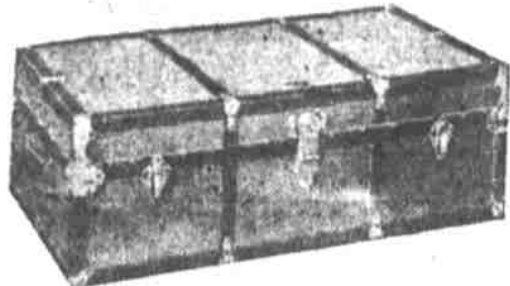
Manufacturers of Ladies' and Children's Silk and Velvet Hats and Buckram Willow and Wire Frames

DR. B. E. WRIGHT

342 1/2 Washington Street, Corner Seventh OFFICE HOURS—8 A. M. to 6 P. M.; SUNDAYS—9 A. M. to 1 P. M. PHONE MAIN 2119—TWELVE YEARS IN PORTLAND

A BIG TRUNK SALE

ONE-FOURTH OFF



For a few days we will sell Trunks at one fourth less than the regular price. Our trunks are the famous "Likly" make, and each is sold under our personal guarantee.

CROSS LONDON GLOVES AND LEATHERS

SEE OUR SHOWING OF SUITCASES, HANDBAGS, PURSES, BELTS, CARDCASES, ETC.

SALE FRAMED PICTURES

Imported Photogravures, size 28x38, 22 different subjects, regular value \$3. Special for a few days... 95c

Genuine Etchings, mounted and matted, guaranteed against wrinkling, each one artist-signed and framed in two-inch soft brown moulding, glass size 13x23, regular value \$2.50... \$1.39

ARTISTIC PICTURE-FRAMING.

OPEN SUNDAY FROM 10 A. M. TO 2 P. M.

MICRO Micro Kills Dandruff and Stops Falling Hair



One of the most valuable discoveries of the century. Price per bottle... \$1.00

ELASTIC HOSIERY



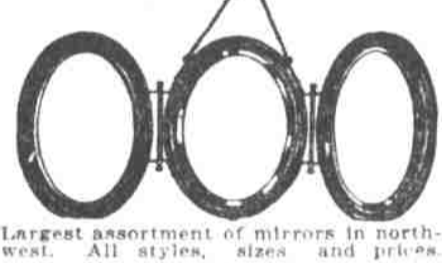
Made to your measure from pure rubber and first quality materials by expert workmen.

SEND OR ASK FOR CATALOGUE

STATIONERY DEPARTMENT

100 Post Card Albums, regularly 35c and 50c, Monday only... 19c

MIRRORS



Largest assortment of mirrors in Northwest. All styles, sizes and prices.

WOODARD, CLARKE & CO.

Exchange II Home A-6171-6172

Fourth and Washington

THE SKILL AND EASE

With Which the Most Difficult Dental Operation is Performed Has Made This Home of Modern Dentistry Justly Famous.



Some people stay away from the dentist, fearing pain, delay and a general upsetting of the nerves. Banish your fear, for at this office at least our modern methods are a guarantee against any of these conditions.

Our work is performed quickly, scientifically, accurately and without the loss of time and patience so common at other offices.

GOOD SET OF TEETH ON RUBBER PLATE... \$5.00 BEST SET OF TEETH ON RUBBER PLATE... \$8.00

DR. B. E. WRIGHT PAINLESS DENTIST

342 1/2 Washington Street, Corner Seventh OFFICE HOURS—8 A. M. to 6 P. M.; SUNDAYS—9 A. M. to 1 P. M. PHONE MAIN 2119—TWELVE YEARS IN PORTLAND