

# PARKER IS ON HIS WAY

### Big Plans are Being Made for Opening of Democratic Campaign at Heilig Tuesday Night—Theodore Bell Coming.

Judge Alton B. Parker, Democratic presidential nominee in 1904 and now president of the American Bar association, will open the Democratic campaign in Oregon Tuesday night at the Heilig theatre. With him will be Theodore Bell, chairman of the Democratic national convention and Democratic nominee for governor of California, who was defeated by a small margin at the last election.

# FRANK TICHENOR IS PROMOTED

### New Official Comes to Take Charge of Woodmen Organization.

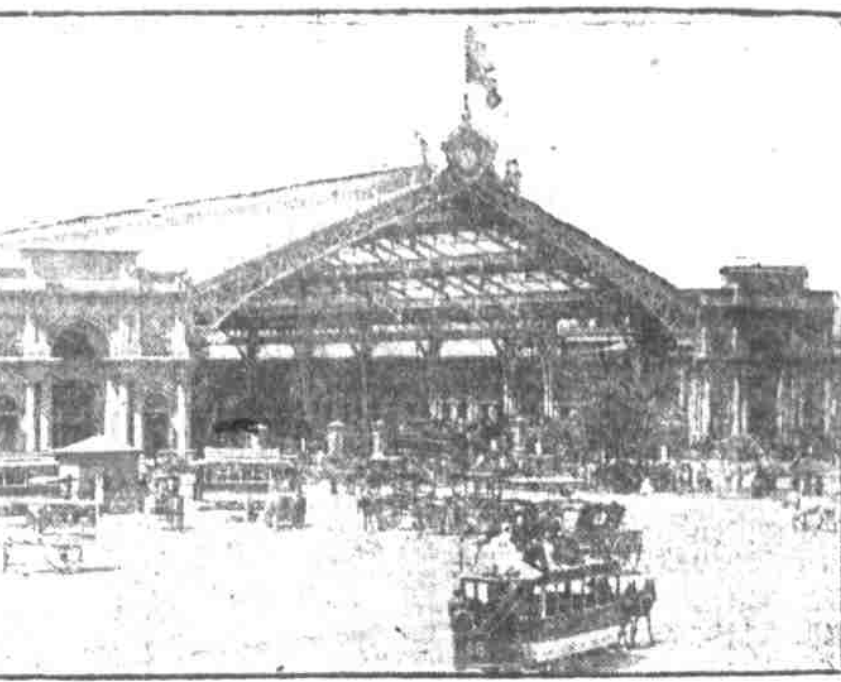
Frank B. Tichenor, for several years district organizer of the Woodmen of the World in charge of the eastern Washington district with headquarters at Spokane, has been promoted to take charge of the three states of Oregon, Washington and Idaho and will make his headquarters in Portland.



F. B. Tichenor.

merly living in Salem and in Portland. His parents were well known donors of the state. The new position to which Mr. Tichenor has been appointed marks a great change in the management of at least in the organization work of the Woodmen of the World. Where during the past two years have been five or six district organizers, there will now be two general organizers, one in charge of Oregon, Washington and Idaho, and one in charge of the work of California and Nevada. These two offices will be under the direct management of the head jurisdiction office as a whole.

# THROUGH CHILE WITH DIRECTOR JOHN BARRETT



Railroad Terminal Station, Santiago.

By John Barrett.  
Chile is the seventh in size of the South American republics. Its area is 281,544 square miles, equal to the combined areas of California, Oregon and Indiana. It is likewise the California of South America, in climate, agriculture and mineral resources. The coast line of Chile is close to 2,000 miles north and south on the Pacific ocean, while the width scarcely exceeds 100 miles in the widest part. Yet this eastern boundary lies along the crest of the Andes, thus throwing all the western slope, with its historic and presumptive mineral wealth, into the lap of a comparatively narrow strip of land.

Its splendid waterway for commerce Chile is intent on adding a railway within its own confines and is planning to increase the railroads of the country so as to possess a direct communication from the straits of Magellan to the frontier of Peru. Today there are 2,847 miles of railroads, 1,200 miles being government property, and 1,647 being private ownership. The longitudinal line as it is called, has already been constructed from Iquique in the south to Tarma in the north, and will soon be extended to Tarma.

**Pleasant Travel.**  
The passenger even now can travel over the miles from Valdivia, a beautiful valley, the Los Angeles of Chile, to Santiago and still further northward to the port of Coquimbo, but the scheme will not be complete until the lower and upper gaps are filled. The trip will then be like a rail journey from San Diego to St. Louis, the tropical fruits and flowers at one end and snow at the other, for Chile has the only spot in South America where such a thing can be seen. The seasonal arrangements of the people, where the small boy can have fun bombarding his opponent with snowballs and the woman with the frozen berries of the coast, are the same as in the United States. The longitudinal road will be the heart of the Pan-American system, that once ridiculed project of connecting New York with the capitals of South America, but the scheme is as sure of fruition as was the plan of the early pioneers to run the iron horse from New York to San Francisco. In fact, the Pan-American railway, under the sanction of Chile, taken on a grand scale, will be from the crest of Bolivia a gigantic Y, or perhaps a loop, one arm running westward toward the south and the other toward the north, and continuing southward to Punta Arenas on the Strait of Magellan.

**About Chile.**  
How does Chile with only 3,500,000 inhabitants manage to do such big things? Chile is rich and the land is abundant. Her foreign commerce, both imports and exports, in 1907, reached a total of \$299,423,513. The imports are chiefly raw materials, the exports of the country are chiefly copper, wool, wheat, flour, sugar, and other agricultural products. The copper is the greatest factor, being mineral products to the amount of \$88,341,000, then animal products, \$4,850,000, then vegetable products, \$4,850,000. These figures illustrate the resources of the nation.

**World's Scenic Route.**  
The world's scenic route is the Canadian Pacific route beyond description. It is the most beautiful and the most comfortable of any in the world. The route is the most scenic of any in the world. It is the most comfortable of any in the world. It is the most beautiful of any in the world.

# Economize



The radical reductions we make this week should interest every economical buyer. Price is no object when it comes to the cleanup at the end of the season. Summer goods of all kinds are being offered at actual cost rather than carry them over until next year.



## WIND-UP SALE OF Refrigerators

A no-profit sale. We want the space to show other goods. We want the money to buy other goods.  
\$8.70 Refrigerator, galvanized lining, size 38x23x15 1/2 inches, capacity 35 lbs., hardwood case, mineral wool filling—now ..... **\$6.00**  
\$12.35 Refrigerators, galvanized lined, size 43x25x16 inches, capacity 50 lbs., hardwood case, mineral wool filling—now ..... **\$8.95**  
\$15.45 Refrigerator, galvanized lined, size 48x27x17 1/2 inches, capacity 75 lbs., hardwood case, mineral wool filling—now ..... **\$11.30**  
\$21 Refrigerator, white enamel lined, size 48x27x17 inches, capacity 50 lbs., polished oak case, mineral wool filling—now ..... **\$14.45**  
\$30 Refrigerator, white enamel lined, size 52x28x18 inches, capacity 70 lbs., polished oak case, mineral wool filling—now ..... **\$21.00**  
\$45 Refrigerator, white enamel lined, size 58x32x20 inches, capacity 90 lbs., polished oak case, mineral wool filling—now ..... **\$31.75**

## WIND-UP SALE OF Lawn Furniture

Our complete line of Porch and Lawn goods, at cost price. We will not carry anything over until next season.  
\$2.00 Ladies' Maple Sewing Rockers, reed seat, natural or green finish—now ..... **\$1.48**  
\$2.75 White Maple Sample Armchair, with large arms—now ..... **\$1.95**  
\$3.00 Large White Maple Sample Rocker, reed seat—now ..... **\$2.15**  
\$5.50 Settee, 4 feet long, golden maple, rattan seat—now ..... **\$3.95**  
\$6.50 Traphagen Reclining Chair, white maple, slat seat—now ..... **\$4.70**  
\$6.50 Steel Frame Reclining Swing Chairs, canvas seat and back—now ..... **\$4.15**  
\$7.75 Maple Settee, in green, woven cane seat and back—now ..... **\$5.70**  
\$8.25 Four-foot Green Maple Parch Seat, cane seat and back—now ..... **\$5.95**

## WIND-UP SALE OF Hammocks

Very small stock remains, mostly good qualities. Price reductions here are enormous. You get a fine hammock for the price of a common one.  
\$2.50 Hammock, C159, close twill weave, concealed spreader, size 37x80, wide valance in Jacquard design now ..... **\$1.75**  
\$3.00 Hammock, D169, size 37x81, lay-back pillow with buttons and tassels, wide valance, close twill weave, now ..... **\$1.85**  
\$3.25 Hammock, E259, size 37x81, have concealed spreader at head, pillow, continuous stringing, wood bar at foot, wide valance; now ..... **\$1.95**  
\$4.25 Hammock, H659, size 41x82, close canvas weave, filled valance, divided suspension, lay-back pillow, buttons, tassels; now ..... **\$2.95**  
\$4.75 Hammocks, K269, close satin weave, a first-class hammock in every respect, size, 45x84, many special features; now ..... **\$3.25**  
\$6.50 Hammocks, O159, size 41x87, close satin weave, highly finished and fastened together with ornamental screws, rings and knobs; now ..... **\$4.45**

## SALE OF SAMPLE Blankets

A recent purchase of the entire line of samples from our eastern factory enables us to give this sale.  
\$1.00 White Wool-finish Blankets, 11-4 size, weight 4 lbs., 72 inches long—now ..... **\$2.25**  
\$4.25 Gray Wool Blankets, size 68 inches by 72 inches, weight per pair 4 lbs.—now ..... **\$2.95**  
\$4.50 Dark Gray, No. 275, size 62x70 inches, blue or pink stripe, weight 4 1/2 lbs.—now ..... **\$3.25**  
\$5.00 Soft light gray wool, size 70x72 inches, weight 5 lbs., blue stripe—No. 328—now ..... **\$3.85**  
\$5.75 soft mottled gray wool, size 68x72 inches, weight 5 lbs., now ..... **\$4.15**  
\$6.50 special gray, 6 lbs. to the pair, size 68x72 inches, pure wool—now ..... **\$4.65**  
\$8 pure white heavy wool, 7 lbs to pair, size 72x72, now ..... **\$5.95**  
\$10 Fatsyhe Dacie, pure white wool, 72x80 inches, 7 lbs to pair; now ..... **\$7.20**

## SPECIAL SALE OF Dinner Sets

These are what are known as cottage sets, enough to do for six at table; 49 and 50 pieces each.  
\$6.25 Dinner Set, beautiful decalcoman on best white, semi-porcelain, with gold lines, 49 pieces; each set packed in separate crate sale price ..... **\$4.45**  
\$6.90 Dinner Set, 49 pieces, of best semi-porcelain, gold tracing decoration on white base; a most popular and stylish pattern; sale price ..... **\$4.85**  
\$7.50 Dinner Set of 50 pieces, oriental flow cobalt blue, includes bread and butter plates instead of chips; sale price ..... **\$5.95**  
\$7.90 Dinner Set, English porcelain of Blenheim line, all 50 large pieces, extra good ware, including sugar bowl and bread and butter plates; sale price ..... **\$6.35**  
\$22.50 Dinner Set, 98 pieces of Grindley's best English porcelain, decorated with heavy gold bands and gold lines; a set that is as good looking as Haviland and much more durable ..... **\$17.75**

## High-Grade Dressers Greatly Reduced

Remember, we say high-grade Dressers, not common cheap goods, such as are generally advertised. Come just to see.  
\$27 Princess Dresser, No. 200, golden polished quarter-sawn oak, French bevel mirror 18x30, cast brass trimmed; sale price ..... **\$16.75**  
\$29 Princess Dresser, No. 203, polished mahogany top 20x32, French bevel mirror 18x30, French legs; sale price ..... **\$19.75**  
\$29 full-size quartered oak Dresser with French plate mirror 22x28, top 20x42, with 2 swelled drawers, No. 114 ..... **\$19.75**  
\$29 highly polished quarter-sawn oak Dresser with oval French mirror 24x30, full swell front, No. 113; sale price ..... **\$21.00**  
\$35 large polished mahogany Dresser, No. 2553, top 22x45, mirror 24x30, top slightly matted; sale price ..... **\$24.75**  
\$37.50 extra fine polished quartered oak Dresser, No. 300, fancy shaped beveled French mirror 24x30, best cabinet work; sale price ..... **\$26.00**

# 185-191 FIRST ST. EDWARDS-CO. HOUSE FURNISHERS. A GOOD PLACE TO TRADE

# SUPERIOR WATCHES

Only watches of established reputation and bearing the scrutiny of our closest inspection, find place in this store of quality. Those desiring real watch economy will do well to investigate and note the high character of case and movement construction prevailing—Prices will interest.

**A. & C. Goldenheimer.**  
CORNER THIRD AND WASHINGTON STREETS  
Manufacturing Jewelers OPTICIANS Diamond Importers

## CUPID'S COLDNESS SOURS MILKMAN'S LIFE

Leo Goldman, a young dayman trying at Wilberg lane and Barr road, is believed by the police to be the man who last evening shot twice at himself, evidently with suicidal intent, but with so faulty an aim that no injury was done.

## LEO GOLDMAN'S SUICIDE ATTEMPT

The shooting occurred on Wilberg lane near the young man's boarding house. He was accompanied by a young woman at the time, and it is believed the shooting was intended as a joke, but a fair game wrong. Patrolman Murray made an investigation of the report which at first was that a man had been shot.

One of the most prominent events of the summer season was the delightful reception given the Ah family of Portland and everywhere at the police station last evening. It was attended by a number of the city of Seattle and while the presence of several out-of-town Ah's added a touch of popularity to the scene.

Quite early in the evening preparations were made to receive the honored visitors. Officers Kay and Kinnin, who acted as ushers, kindly stepped down the street to Ah's arrival.

## AH! VOCIFERATES THE AH CLAN, TOM KAY ALLEGES FAN TAN; WOEFUL TALE OF CHINAMAN

ing from one to the other and asking politely the name, age and nativity of each guest.  
At length, after the attendance of 20th guest at the police court Monday had been assured by the placing of \$20 per head in the silver salver, the party broke up, each declaring it one of the most delightful evenings spent for a considerable time.

Those on the invitation list were Ah Lee, Ah Jun, Ah Louie, Ah Gow, Ah Charlie, Ah Ten, Ah Sing, Ah Hon, Ah Joe, Ah King, Ah John, Ah Chung, Ah Sing and Ah Sam, all of the well-known Ah family, as well as Clun Jim and Bah Yee.

Inspector Meachern, a non-conductor, charged by M. A. MacEachern, city license inspector, with practicing magnetic healing without a license, was arrested last evening on a warrant. She will be heard in the municipal court Monday.

## FREE Music Lessons

Others are joining the Piano Club—co-operating in wholesale buying and participating in substantial savings. Why not you?  
In addition to savings of \$123 and Free Life Insurance to Club members, we give during this month to readers of this paper Twenty Music Lessons Free—no matter where you are located. Write for Club Booklet; mention Free Music Lessons and The Journal.  
Full particulars will be sent you by next mail.  
Wholesale Dept. EILERS PIANO HOUSE Portland, Or. 253 Washington St.  
Six Dollars Do It! Six dollars cash and 16 a month buys a fine piano at Eilers Piano house this week. See page eight, section one, for particulars.