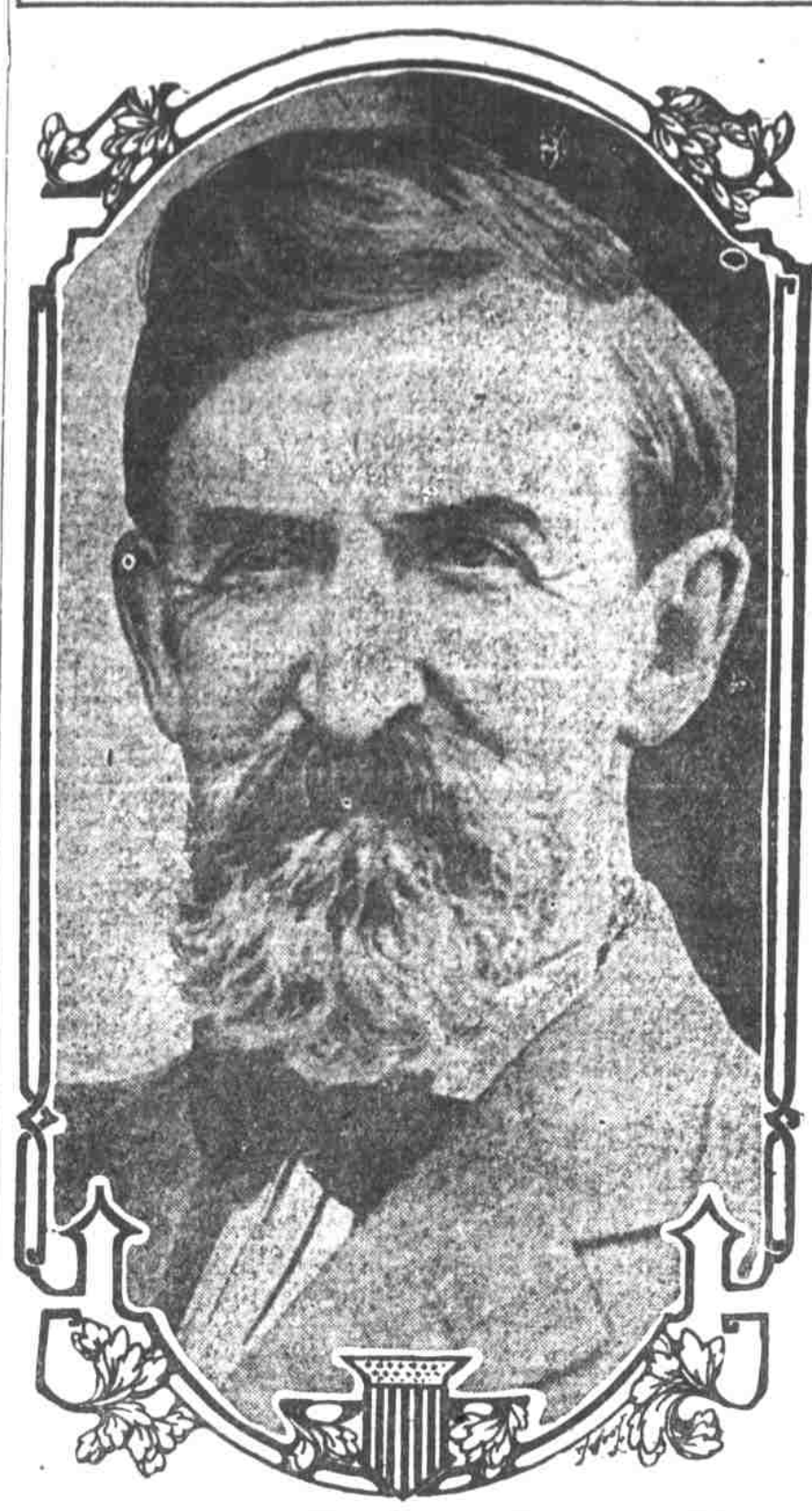


JOHN WORTH KERN'S LATEST.



Latest photograph of John Worth Kern of Indiana, nominated for vice-president on the Democratic ticket.

BEAUTIES OF KLAMATH ENTHRALL PORTLANDERS

Crater Lake, 7,000 Feet Above Sea Level, Is Described as One of the World's Scenic Wonders—A Few Good Wagon Roads Are Needed.

The scenic wonders of the Klamath country and of Crater lake have so impressed the Portland party which made the trip to that country last week that it will be a long time before the members tire of talking of what they saw. Crater lake, according to C. S. Jackson, of the Journal, who was one of the party, is the greatest natural wonder in the world.

The excursion was under the charge of M. L. Killison of the firm of Steinmetz & Co. The party consisted of E. J. Selmetz and M. L. Allison of the firm of Steinmetz & Co., L. J. Shell, A. H. Lea, Mr. and Mrs. C. L. Morse, Mr. and Mrs. H. L. Bettman, Dr. Nahman, W. H. and H. C. Norman, C. Parrish, B. S. Owen, Miss Donna Beach, Mr. Whitely of Koloa, Wash., and Mr. and Mrs. C. S. Jackson. The trip was made by rail from Portland to Weed, Shasta county, and thence to Ducis, a new town in the country. At Ducis the party took a stage to Teeter's Landing, and from there by steamer to Klamath Falls. The railroad from Weed to Klamath Falls is operated at present by the Oregon and Northern Pacific, and is expected to be finished by the first of next January.

"Klamath Falls," says C. S. Jackson, who is very enthusiastic about the trip, "is a live town of about 2,500 people. It has the good fortune to have a live chamber of commerce which looks after the comfort of strangers, is very alert as to the resources of the country, and is ready to advise about displaying them to good advantage. The town has been noted for its horses and cattle, and will have more or less prominent as to development by irrigation.

LIVELY BIDDING FOR GRESHAM LAND

Heirless Tract Sold at Auction for Benefit of the State.

That real estate near Gresham is in demand was shown by the extraordinary crowd that made the courthouse steps impassable this morning when Deputy Sheriff Hollingsworth sold \$2,825 acres of land belonging to the estate of William Studer, that has reverted to the state of Oregon because there were no heirs.

After about an hour of bidding the property was finally sold to Emmett H. Kelly for \$12,500, a little more than \$284 per acre. Among the disappointed bidders was a delegation from Gresham, headed by Mr. Short, the mayor of the city, who had hoped to be able to acquire the tract for the city.

After the sale Dr. Short, who had the bidding for the town, said that Gresham is out of it unless it can be bought for \$11,000 so that the hope of all those who bid on the parcels went glimmering in short order.

These bids were received by Auctioneer Hollingsworth on the tract as a whole before the sale was made. The land is valuable for cultivation or for subdivision in small tracts.

Charles L. Kinney, 23 years, living with his mother, Mrs. G. F. Dresser, at 822 Prescott street, was drowned in the Columbia yesterday afternoon.

In company with Homer Grout, 590 Prescott, and his little step-brother, Kinney waded out into the river near Shaw's island, and was struck by a railroad tie and as the water was shallow they waded over half the way to Shaw's island.

"I met Alfred Vanderbilt," said a tourist at a Plaza luncheon, "at the London horse show. He talked about the riding."

"Mr. Vanderbilt praised the riding, especially the riding of the Italians, with their close knee grip. He ridiculed a German. He said the German reminded him of an old general who used to ride—he had been an infantryman in the central park in his old age."

"A friend, spying the general on his horse one morning, trotted up to discuss some mooted change in the pension law. 'General,' he began, but got no answer."

"General—'Stilly no answer. 'General—General, I say! he shouted. 'The old general, bounding high in the air, turned a purple and frowning face on his interrogator. 'Great heavens! man,' he cried, 'can't you see I'm riding?'"

HELPLESS TO AID DROWNING FREED

Charles L. Kinney, 23 years, living with his mother, Mrs. G. F. Dresser, at 822 Prescott street, was drowned in the Columbia yesterday afternoon.

In company with Homer Grout, 590 Prescott, and his little step-brother, Kinney waded out into the river near Shaw's island, and was struck by a railroad tie and as the water was shallow they waded over half the way to Shaw's island.

"I met Alfred Vanderbilt," said a tourist at a Plaza luncheon, "at the London horse show. He talked about the riding."

"Mr. Vanderbilt praised the riding, especially the riding of the Italians, with their close knee grip. He ridiculed a German. He said the German reminded him of an old general who used to ride—he had been an infantryman in the central park in his old age."

"A friend, spying the general on his horse one morning, trotted up to discuss some mooted change in the pension law. 'General,' he began, but got no answer."

"General—'Stilly no answer. 'General—General, I say! he shouted. 'The old general, bounding high in the air, turned a purple and frowning face on his interrogator. 'Great heavens! man,' he cried, 'can't you see I'm riding?'"

PORTLAND RAILWAY, LIGHT & POWER COMPANY

BULLETIN NO. 10

THE TUNGSTEN ELECTRIC INCANDESCENT LAMP

This new Electric Lamp was invented and first used in Germany and Austria. It is now being made in the United States, and has recently been placed on the market. It marks a revolution in electric lighting, and brings the cost BELOW THE COST OF GAS.

The lamp is similar in appearance to the ordinary incandescent lamp, except that the light is whiter and more intense, and the bulb is frosted on the tip. It furnishes the same amount of light as the old lamp at about ONE THIRD the cost for current. The first cost of the lamp itself is higher, but this is more than made up in the saving in current in the first few weeks of operation.

The following table shows the relative cost of operating a 200 candle-power Tungsten Lamp and a 200 candle-power gas arc lamp burning from three to eighteen hours per day, each day of the month

Table with 4 columns: Hours Per Day, 200-C.P. GAS ARC, 200-C.P. TUNGSTEN ARC, Cost. Rows show costs for 3, 4, 6, 8, 10, 12, 14, 16, 17, 18 hours per day.

From the above it will be seen that all can now use the modern electric light, with its freedom from heat, odor, dirt and impoverishment of the air, at less cost than gas.

These lamps can be had from dealers, who will furnish fixtures, shades and wiring and install them so that a maximum of light and a minimum of cost will be obtained.

We save 500 Club members who join in this cooperative buying \$66,500—quite a sum. Will you be one of the club members?

The most important gift that can be bestowed upon a child—one which carries with it every blessing contained in a token of love—is a New Scale \$425 Eilers Piano.

The Books of Eilers 500 Piano Club Are Now Open. Pay \$17 at joining the Club balance of \$25 at 15 months, or \$25 cash and \$25 quarterly, or \$57 cash and balance in one and two years, or an agreed amount cash and balance at the coming Fall. All time contracts are based on spot cash club prices of \$292; therefore must bear 8 per cent interest, not on the full amount but on balance due from the date of one payment to the next, and so on.

Not knowing how many of the five hundred pianos in this club would be taken outside of the city, we could not figure to deliver them at your station—the rates to different points vary—and all this expense would have to be included in the total cost of five hundred pianos in order to give to the club price. At any rate if you buy of any one who delivers or pays the freight, you pay out just the same, because it is included in the cost—enough to make sure of being enough. When you pay the freight yourself, you know just what it is costing you. We will tell you how much if you will give us your nearest shipping point. You, with four hundred and ninety-nine others, take five hundred pianos at our store—you cooperate in quantity buying—each sharing the savings alike; but there are no delays, no waiting until the entire five hundred are taken before you get yours—we give it to you at once, because

EILERS PIANO HOUSE. The House of Highest Quality. 353 Washington St. PORTLAND OREGON. Includes contact information and a coupon for a booklet.

WHEAT CROPS

Forty-Five Million Bushels Are Predicted as the Minimum Wheat Output in the Pacific Northwest This Year.

While it is impossible at this time to secure definite figures on the wheat crop, it is practically certain that the Pacific northwest will this season produce a crop of between 45,000,000 and 48,500,000 bushels, as compared to 50,000,000 bushels a year ago.

Considering everything weather conditions principally—this is a remarkable showing and indicates that a failure of crops is well nigh impossible in the Pacific northwest, even under conditions that would stagger the producer of wheat in almost any other section of the world.

One of the remarkable lessons that the present season teaches, is the fact that a crop sown in the fall months will produce almost twice as much grain as that sown during the spring period. For seasons when the rainfall is normal, there is of course a very good crop gathered from the seed sown in the uncertain spring. There has been a disposition among the producers of Oregon in late years to sow most of the grain during the fall months, but over in Idaho and Washington the tendency has been to do the work in the early spring.

Exceeds Expectations. Even as matters stood the Pacific northwest has nothing but cause to rejoice, for the production of wheat is greater than even the most optimistic had believed possible weeks ago. While there was much alarm felt by some on account of the many adverse weather conditions, it has been shown that there was much more fear than actual damage.

As a matter of fact there never was a better season to conduct the harvest of wheat and other grains than during the crop year now at its height. While the summer weather has been warm in every portion of eastern Oregon, eastern Washington and Idaho, practically no damage was inflicted upon the crop. In fact had there been a normal rainfall of about 6 inches instead of an average decrease of about 10 inches, there is no doubt that the three states of the north coast would have produced a 75,000,000 bushel wheat crop—far the greatest in its history.

The lack of sufficient moisture pulled down the production to a considerable extent, but the more than average weather enabled the producers to secure more of their wheat than would have been the case under normal harvest conditions. It is usually the rule for the rains to come shortly after the opening of the harvest season, as was the case in the Pacific northwest the past season has been contrary to any heretofore existing.

As a season like this one just passing another lesson of great moment has been learned by the grain producers—the matter of cultivation. While in the Pacific northwest is noted for the evenness of its climate, there is a season here and there when the dews get distilled somewhat. This was one of them.

It is noted quite clearly in every field where the cultivation has been in the proper manner that the production was little, if any, in default of even the summer yield of the crop. Perhaps the county in the northwest where cultivation was carried out in the best manner this season was Wasco. Although that county had no more moisture than other sections of the wheat belt, the crop of 1908 compares favorably with that of a year ago. In other counties which show quite good growth of wheat, compared with the previous season, these and not the very first fields next to that occupied by Wasco, is Umatilla. Next in line of successful growth and harvest are the fields in Umatilla in the race for supremacy in her sister county of Washington state, Walla Walla.

Walla Walla's Showing. Considering everything, the showing of Walla Walla county is the most remarkable of the entire crop year. Producing counties. A large per cent of this county is of the light land order. Its principal crop is wheat. In the very first field next to that occupied by Wasco, is Umatilla. Next in line of successful growth and harvest are the fields in Umatilla in the race for supremacy in her sister county of Washington state, Walla Walla.

MINERS CHOKED BY FUMES OF POWDER

Nevada City, Cal., Aug. 10.—Three miners are lying in the hospital here today hovering between life and death as the result of being overcome by mine powder fumes in the Union Hill mine yesterday. They were found unconscious in a drift by the mine superintendent, Clifford Graham, and his assistants, Fred and the three miners are Richard Grenfall, Herbert Burns and D. Chapell.

Most of us find it easier to boast of what we are going to do than to brag about what we have done.

Soda Crackers with crack to them, Soda Crackers with snap to them, Soda Crackers with taste to them. Uneeda Biscuit. Oven-fresh—Oven-crisp—Oven-clean—5¢ In dust tight, moisture proof packages. Never sold in bulk. NATIONAL BISCUIT COMPANY