

EUROPE MAKES ITS SALTPETER

Government of Chile's Attention Called to Artificial Production.

(Special Correspondence.)
Santiago, Chile, Aug. 1.—The attention of the government has been called to important advances made in the artificial production of saltpeter in Europe, which threatens to interfere not only with our sales but with the value of our lately authorized bonds. The emission of which must be affected by our ability to sell the saltpeter of our mines, hypothecated for security. The financial crisis under which Chile has been suffering is reaching its limit. The paper dollar, with forced circulation, is worth only eight pence, while its par value is 18 pence. The cost of living has reached such disproportionate figures that existence is impossible for social classes. The acute situation created by the well intentioned forced issue of paper money, demanded by the disasters of the earthquake, and the fear that the bills will never be redeemed make the opinion general here that the crisis cannot endure much longer. The members of the cabinet and of the congress are in constant conference on the situation, which is without precedent in the history of Chile. The government has received proposals for building the longitudinal railroad line—i. e. from north to south of the republic, to form part of the pan-American railroad. They are to be opened in Paris, Berlin, London and Washington for action of the various commissions interested in the much discussed project. The executive has accepted the proposals of the French-English company for the enlargement of the bay of Valparaiso. When these works are finished Valparaiso will be one of the best bays and ports of the world, as it is now one of the most important.

Companies Incorporated.
(Salem Bureau of The Journal.)
Salem, Or., Aug. 1.—Articles of incorporation have been filed in the office of the secretary of state as follows:
Hill Military academy, principal office, Portland, capital stock, \$1,000; incorporators, Joseph A. Hill, Laura E. Hill and J. W. Hill.
Salem Beer Agency, principal office, Portland, capital stock, \$3,000; incorporators, Alex. H. Smith, F. G. Deckebach and W. H. Wolf.

Auction Sales
At Wilson's Salesroom
173-175 SECOND ST., CORNER YAMHILL
Monday, Wednesday, Friday, at 10 a. m. Each Day.

Comprising a fine assortment of home furnishings. Furniture for the parlor, dining-room, bedroom and kitchen. Buyers will find artistic and ornamental furniture, fine mission hall clock, mission couch, rockers and chairs in leather upholstery. Dining-room sets, tables, chairs, buffets, dishes, china, glassware, pictures, etc. Carpets, rugs, linoleum and floor coverings, complete kitchen furnishings, ranges, stoves, gas ranges, kitchen utensils, table treasures, etc. Bedroom suites, dressers, metal beds, springs, mattresses, rockers and sundry furnishings, etc.

Auction Sales
The Portland Auction Co. (INCORPORATED)
211 FIRST ST.
Tuesday and Thursday at 10 A. M. Friday at 2 P. M.

GLEN HARBOR
The new townsite opposite St. Johns, on west bank of Willamette; 15 minutes from the Chamber of Commerce by United Railway electric line, now building. No draw bridges to delay. So planned that each lot commands a view of the Willamette and Columbia, of the Mountains, of Vancouver and the great draw bridges of Hill's "North Bank" Railroad. Good water, graded streets and sewers. Restrictions. Easy payments and right prices. Lots will be on the market about August 8.
Glen Harbor Realty Co.
836-840 CHAMBER OF COMMERCE.

BOISE POSTOFFICE BUSINESS INCREASES
(Special Dispatch to The Journal.)
Boise, Idaho, Aug. 1.—The business of the Boise postoffice for the past fiscal year amounted to \$67,125, an increase of 3.3 per cent over that of the corresponding previous year, with a percentage of increase in the annual business since June 30, 1900, amounting to 254.8 per cent. of the twelve offices at Boise, Billings, Butte, Helena, Missoula, Portland, Salem, Hollingham, Everett, Seattle, Spokane and Tacoma, the Boise office shows the fifth greatest increase since the year 1900.

FORD AUCTION CO.
AT 369 EAST MORRISON ST.
Don't talk much. We let our prices do that part of the business for us, that's why the house furnishings go out just as fast as they come in. Our auction house never gets filled to the doors because WE SELL, but as goods are always coming in, we usually have a good assortment.

Auction Sales
BY
The Portland Auction Co. (INCORPORATED)
211 FIRST ST.
Tuesday and Thursday at 10 A. M. Friday at 2 P. M.

GLEN HARBOR
The new townsite opposite St. Johns, on west bank of Willamette; 15 minutes from the Chamber of Commerce by United Railway electric line, now building. No draw bridges to delay. So planned that each lot commands a view of the Willamette and Columbia, of the Mountains, of Vancouver and the great draw bridges of Hill's "North Bank" Railroad. Good water, graded streets and sewers. Restrictions. Easy payments and right prices. Lots will be on the market about August 8.
Glen Harbor Realty Co.
836-840 CHAMBER OF COMMERCE.

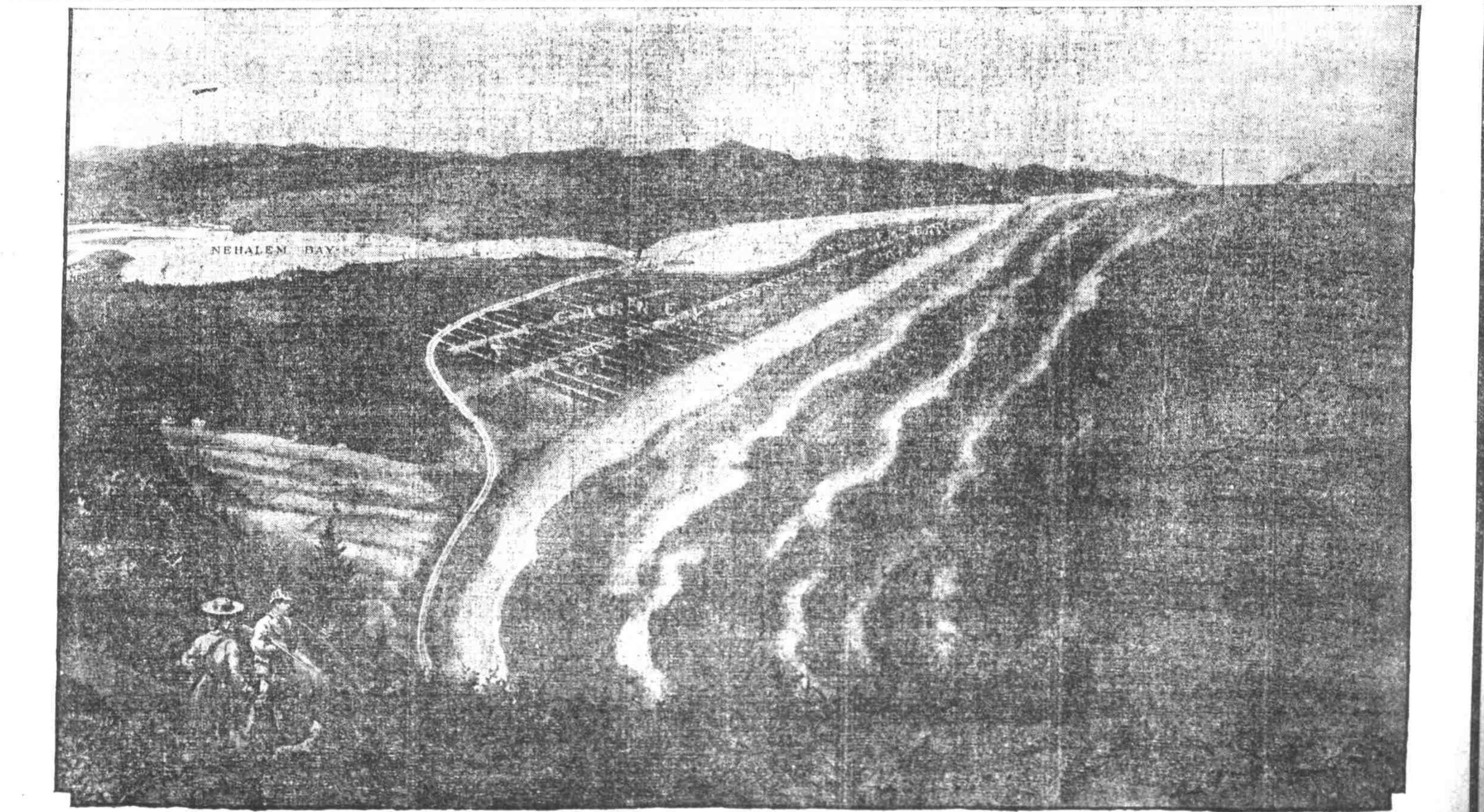
S. L. N. GILMAN, Auctioneer SPECIAL AUCTION SALE
Almost new and fine furniture by order of Mr. J. W. Rutherford at residence No. 91 East 20th, Near East Washington, Wednesday Next, Aug. 5th, 10 A. M.

"Beautiful Bandon by the Sea"—the Scenic Beach of the Oregon Coast
THE COMING SUMMER RESORT OF THE PACIFIC NORTHWEST
BANDON-BY-THE-SEA
THERE IS ROOM IN BANDON FOR MORE MANUFACTURES
There is ample opportunity in the Bandon country for thousands more, of farmers—men who will improve the cut-over lands, set out orchards, plant small fruits and raise vegetables. The poultry business is as yet not overdone. But few, if any, exclusive poultry farms exist in this part of the country. There are countless opportunities here for the man with moderate and large capital. There is a chance for the man with small capital, brains and brawn. There is no climate so ideal in the state, the year around, as in the Bandon country, down by the sea.
The coming of the railroad in Coos county will bring wealth and untold prosperity to the man who anchors in Bandon before the coming event of better transportation facilities.
SWEENEY'S ADDITION TO BANDON will be one of the choicest home additions, when the great steam horse enters the town for the first time. The lay of the land in this "addition" assures all who own one or more lots there that no more desirable place exists for the location of a home. Why not purchase your lot now, while the price is reasonable? Call at office for full particulars and booklet, or send 2-cent stamp for Sweeney's handsome prospectus, "BANDON BY THE SEA." Address
THE WARREN PUBLICITY COMPANY
SUITE 405-6 BUCHANAN BUILDING, PORTLAND, OREGON
TEN NEW HOMES AND A \$35,000 HIGH SCHOOL NOW UNDER CONSTRUCTION.

Auction Sales Geo. Baker & Co

Short Notice—On failure to comply with terms of lease we are instructed to sell by auction on TUESDAY NEXT the costly furnishings of private residence removed to BAKER'S AUCTION HOUSE for prompt disposal at the highest bidder FOR CASH. Inventory includes: very massive and handsome Napoleon V. bed complete with springs and felt mattress, pretty designed Princess dresser in birdseye maple, 2 beautiful Axminster rugs 8x4, other smaller rugs, 640 jewel gas range with ovens above and below, handsome buffet, round dining-table extends 8 feet, china closet and set of box seat chairs on suite, dinner set, stylish painted fish set, Singer sewing machine, parlor rockers, center table, Davenport in green cover, iron beds and the furniture of five bedrooms, large velvet carpets, fine steel engraving in gold frames, 2 very large and COSTLY OIL PAINTINGS, kitchen cabinet family size, refrigerator in good order, air-tight heater with hot water attachment and other useful lots, can be viewed tomorrow (Monday). All parties furnishing are invited to be at the auction on Tuesday morning at 10 o'clock.
Sale on Thursday Next
This is our weekly sale day for all consignments of house furnishings sent to our spacious auction house for absolute sale from railroad companies, sheriffs, mortgagors, housekeepers and others. (No junk received.)
SALE AT 10 O'CLOCK
Office and salesroom, 152 Park street, near Alder. Both phones.
BAKER & SON, Auctioneers.

A BEAUTIFUL HOME BY THE SEA



NECARNEY CITY AND NEHALEM BAY PARK
The nearest ocean beach Portland can ever have—57 miles nearly west of Portland. Study this picture and remember that it is a true representation of a \$50 lot secures an allotment number which will entitle him or her to lots are now placed on sale in Necarney City, at the remarkably low price of only \$50 A LOT—\$10 CASH AND \$5 PER MONTH. Every purchaser of a \$50 lot secures an allotment number which will entitle him to participate in the free distribution of 384 lots. Remember, prices will double on these lots in a short time. Call at once for full particulars.

Nehalem Bay Park Land Co.

MAIN OFFICE 1000 WILLIAMS AVENUE—CENTRAL OFFICE ROOM 3 CHAMBER OF COMMERCE.