

HOMESEEKERS FLOCK TO RECLAMATION PROJECT

Rapid Colonization in Progress on Newly Converted Farming Section in Idaho—Settlers Prepare Lands for Fall Supply of Water.

Nampa, Ida., Aug. 1.—The south side of the Payette-Boise reclamation project is practically completed and ready for the storage of the flood waters that are to be poured into the great Deer Flat reservoir, which will be filled this fall and winter from the Boise river through the New York canal. The many homesteaders of the Deer Flat section have commenced an extensive campaign of preparation of their lands for the next season's supply of water. Many are well to do, or sufficiently so as to be able to provide themselves with the proper equipment to prepare their lands in a practical way.

Clearing the Land.
Great grubbing machines are clearing away the scruboak, riding plows, disc implements and leveling machines are being put into operation. The splendid teams and substantial wagons are characteristic of the stability and progressive tone of the recent activity. The land in the Deer Flat section is considered the most favorable soil of the whole project and hundreds of homesteaders will begin next spring to demonstrate its possibilities. Thousands of acres are being made ready and the most marvelous growth this country has ever enjoyed is expected.

There is an influx of eastern people. Hardly a train arriving without a new family for Nampa. The newcomers are buying improved homes or are locating on some of the 30-acre relinquishments that are to be had at reasonable figures from those who filed on 160 acres of land before the 80-acre unit was established.
Two dams that are to hold the storage water in the big reservoir have been completed and the New York canal, the reservoir feeder from the Boise river, is complete, so that everything is ready for the filling of the great basin.
Building of the Dams.
The lower and larger embankment was completed early in the spring of this year. It was built by contract by Hubbert & Carlson. The upper dam, about four miles from Nampa, has been done exclusively by the government. It is just being finished. The equipment, teams, men and all connected with the work will be removed about August 1. Twenty to forty teams and that many men have been at work for nearly two years. The New York canal, the reservoir's feeder, has only recently been completed. It was done by various contractors who took only sections of the canal at a time. It will carry an immense volume of water. It is 50 feet wide at the bottom and will carry a depth of 10 to 12 feet.

Beautiful Home Sites.
Along the borders of this lake are many beautiful tracts of land and many resort places will be made. Prominent among those who have already planned a resort is William Pleasant of Nampa, who owns a large number of acres between Nampa and the upper dam. He has a beautiful tract which he has planned as a resort, and it is to this tract that he has also planned to build an electric line, the right of way for which has been secured.
Many homesteaders have built substantial residences, but their attention seems to be directed to clearing and preparing the land to receive the water that is to be furnished them next year.

The work of the government is now directed to the construction of the lateral system by which the water will be diverted from the various larger laterals to the lands to be irrigated. There are at present a number of reclamation surveying outfits in the field laying out the lateral canals. These laterals are being built by contractors, many of whom are settlers near the laterals and the work that is being issued by the government for the work will be accepted in payment for the water payments next year.

FORMER EDITOR IS ARRESTED AT SEATTLE

Fred L. Harris, Grandview Press, Is Wanted at North Yakima for Bad Check Work.

(Special Dispatch to The Journal.)
North Yakima, Wash., Aug. 1.—Sheriff Edwards received a telegram this evening announcing the arrest of Fred L. Harris, editor of the Grandview Press, at Seattle. He is wanted for passing a \$25 check on the Grandview Press at Sunnyside, with no funds. Harris fled to Seattle last week. The Yakima Herald and Sunnyside Republican have claims against him amounting over \$200. He is said to have other checks scattered through the country. Deputy Metzger left at midnight for Seattle.

JOINT INSTITUTE FOR TEACHERS

(Special Dispatch to The Journal.)
Boise, Ida., Aug. 1.—Plans are being made for a joint county institute for teachers of Canyon, Boise, Owyhee, Washington and Ada counties to be held in this city September 7 to 11 inclusive. The meeting will be in charge of Professor W. H. Sanders of Postville. This will be the first meeting of the kind ever held here and it promises to be a success. Several prominent instructors from different parts of the country will be on the program. Among those who will take part are Professor Edward Kemp and Dr. Charles A. McMurray of the Indiana state normal school and May Reed Pierce of Chicago.

TWO MILLS BURN AT COTTAGE GROVE

(Special Dispatch to The Journal.)
Cottage Grove, Or., Aug. 1.—This morning about 2 o'clock McKibben Bros' sawmill, three miles east of this place, burned to the ground. The origin of the fire is not known. The lumber was saved by fluming it from the mill to the railroad siding, some distance away. The mill was valued at \$2,000. No cause for the fire was ascertained. While the mill hands were at dinner the Wicks sawmill on Row river, 13 miles above this place, caught fire last Saturday from an unknown cause and burned down. The loss is estimated at \$3,000, with no insurance.

HOOD RIVER SCENE OF JOLLIFICATION

Former Iowans Gather for the Annual Midsummer Reunion.

(Special Dispatch to The Journal.)
Hood River, Or., Aug. 1.—Six hundred members of the Hood River Iowa State association and friends picnicked, ate barbecued ox and listened to speechmaking at Grange Park yesterday. The occasion was the annual meeting of the association for the election of officers and removal of old associations of the former home in the middle western of the general associations at Hood River, the one representing Iowa enjoys the largest membership, and the midsummer annual meeting is looked upon as one of the big social events of the year.
The program yesterday included an oration by J. Van Siver, pastor of the Christian church, addresses by Hon. A. A. Jayne and M. P. Leisberg, a violin solo by Miss Della Hartford, a recitation "Where Home the Oregon" by Mrs. George Wickham, and another, entitled "The Old Hawkeye State" by Miss Adah Rose.
The officers elected for the ensuing year were W. E. Laraway, president; M. M. Hill, vice-president; and J. H. Orsburn, secretary. Laraway was elected president of the association for the fifth time.

TEN MINERS JAILED ON RIOT CHARGE

Indignant at Alleged "Rotten Food" They Gave the Cook Summary Notice to Leave.

(Special Dispatch to The Journal.)
Chehalis, Wash., Aug. 1.—Nine men were lodged in the county jail here last night for riot. Tomorrow a tenth will come in and turn himself over to Sheriff Degeff. All are coal miners. County Attorney Harmon has filed an information in the superior court charging that on July 23 last George Strowbridge, Paul Smith, William Lassitine, Joe Barker, Milton Miller, Al Hornecht, Joseph Stockman, Ed Swanson, Herbert Johnson and S. Mackenzie did unlawfully assemble and in a violent and unlawful manner with force, directed against E. W. Parsons, commit riot.
The trouble is of some months standing. Parsons has been cook at the boarding house at which employees of the Wilson Coal company at Knapah board. Bitter complaint has been made as to the quality of the food served by Parsons, the men alleging that rotten meat was dished up to them. It is claimed that in order to end Parsons' services the men got together and gave him a very limited time to get out of camp. Smith was the only man who was not arrested when Deputy Sheriff King and Buckenham went out to Knapah today. He was away from camp, but will be in tomorrow. Judge Rice has fixed the bail of each man at \$500.

THE ANCIENT TALE—A GUN, A VICTIM

(Special Dispatch to The Journal.)
The Indian, Or., Aug. 1.—Young Charles Perry, accidently shot himself through the hand yesterday at the home of Roy Taylor, while he and several others of the Indians were preparing to go camping. The gun was loaded and went off as he was putting it into the wagon.

NEWS FORECAST OF COMING WEEK

Important Events in Political World—Two Big Conventions.

(Special Dispatch to The Journal.)
Washington, D. C., Aug. 1.—The coming week will see the Republican national campaign headquarters in New York running in full blast. Judge Taft plans to spend the week as quietly as circumstances will permit. Mr. Bryan, at his home near Lincoln, will put the finishing touches to his speech of acceptance.
Outside the sphere of the national campaign the week holds in promise a number of events of interest and importance in the world of politics. Primary elections will be held in several states and in nearly all cases it will be the first trial of the system of direct nominations.
State-wide primaries will be held Tuesday in Kansas and Missouri. The Kansas contest involves the governorship and other state offices and also the question of a successor to Chester L. Long in the United States senate. In Missouri the interest centers chiefly in the three-cornered fight for the Democratic nomination for governor. The Republicans will head their ticket with the name of Herbert S. Hadley, the present attorney-general.
The Illinois primary, the first to be held in that state, will take place Saturday. Governor Deneen and ex-Governor Yates are fighting it out for the Republican gubernatorial nomination, while on the Democratic side there are five contestants in the race. The seat of Senator Hopkins also is involved in the result of the primary.
Primaries for legislative and judicial offices will be held Tuesday in Oklahoma and in Idaho the Democrats will meet in convention at Wallaco to name a state ticket.

MEAT SHORTAGE NOW ALARMING

Big Eastern Houses Obligated to Order Return of Their European Shipments.

London, Aug. 1.—The prolonged scarcity of meat in the United States continues to claim attention and is beginning to create alarm. The demands of American houses for the return of canned meats sent here, already repeated twice in orders that agree to pay the freight both ways, are so extended and persistent it is impossible to understand how such operations can be effected.
In 25 years the stocks of preserved meats have not been so reduced in Europe as at the present time.
Through English ports alone, 5,432,000 pounds of canned meats have been returned to the United States. An indication of the necessity for meat in the exporting country is found in the fact that the important house of Libby, which has immense stocks in Antwerp, has given orders to return it to the country of its origin. Almost all the contracts pending have been rescinded or failed of execution. The shipments of meat from persistent Africa is impossible to understand how such operations can be effected.
Australia, meantime, is availing itself of the condition to push the industry of canned meats to the limit, and in all its packing establishments is working with extra forces on full time to secure position and satisfy the market. But it is calculated that do what they will, it is impossible to reestablish the equilibrium of the market, since all estimates seem to show that the world's demand is superior to the actual production.
In view of the situation, which if prolonged must produce an insupportable rise in the price of meats, there is a return to the idea of reopening English ports to the admission of Argentine cattle.

MEAT SHORTAGE NOW ALARMING

Big Eastern Houses Obligated to Order Return of Their European Shipments.

London, Aug. 1.—The prolonged scarcity of meat in the United States continues to claim attention and is beginning to create alarm. The demands of American houses for the return of canned meats sent here, already repeated twice in orders that agree to pay the freight both ways, are so extended and persistent it is impossible to understand how such operations can be effected.
In 25 years the stocks of preserved meats have not been so reduced in Europe as at the present time.
Through English ports alone, 5,432,000 pounds of canned meats have been returned to the United States. An indication of the necessity for meat in the exporting country is found in the fact that the important house of Libby, which has immense stocks in Antwerp, has given orders to return it to the country of its origin. Almost all the contracts pending have been rescinded or failed of execution. The shipments of meat from persistent Africa is impossible to understand how such operations can be effected.
Australia, meantime, is availing itself of the condition to push the industry of canned meats to the limit, and in all its packing establishments is working with extra forces on full time to secure position and satisfy the market. But it is calculated that do what they will, it is impossible to reestablish the equilibrium of the market, since all estimates seem to show that the world's demand is superior to the actual production.
In view of the situation, which if prolonged must produce an insupportable rise in the price of meats, there is a return to the idea of reopening English ports to the admission of Argentine cattle.

PERU'S PRESIDENT THANKS MR. ROOT

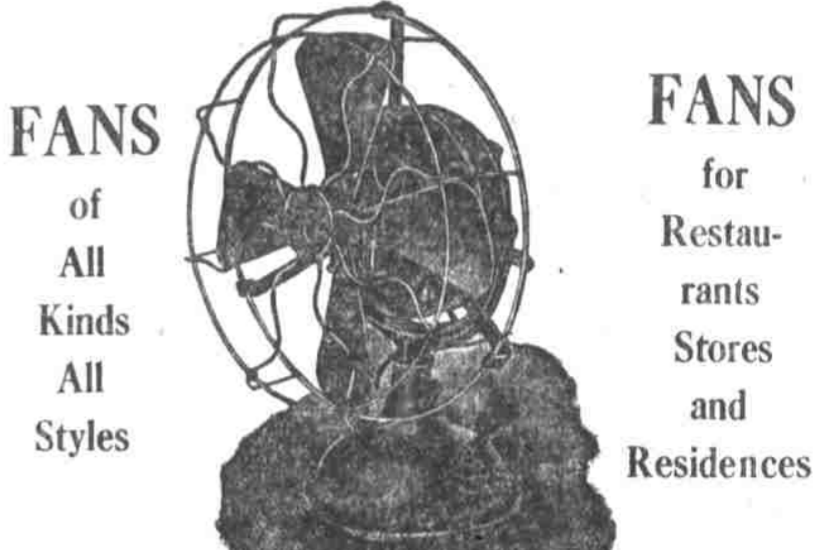
(United Press Leased Wire.)
Lima, Peru, Aug. 1.—La Opinion Nacional of this city contains the following: We give below the telegram which President-elect Dr. Leguia has sent to United States Secretary of State, in acknowledgment of his congratulatory on his election to the highest office in our country: Hon.

PERU'S PRESIDENT THANKS MR. ROOT

(United Press Leased Wire.)
Lima, Peru, Aug. 1.—La Opinion Nacional of this city contains the following: We give below the telegram which President-elect Dr. Leguia has sent to United States Secretary of State, in acknowledgment of his congratulatory on his election to the highest office in our country: Hon.

Fan Season Is Here

Keep Cool



FANS of All Kinds All Styles
for Restaurants and Residences
Hot weather comfort can be secured with an **ELECTRIC FAN** at a cost for current of **LESS THAN ONE CENT AN HOUR.**
Your wife needs an **ELECTRIC FAN** in the household quite as much as do you at the office.

Do Not Delay
A nice, cool, well ventilated room insured by the use of an **ELECTRIC FAN.**
Call at our Supply Dept., 145-7 Seventh Street and see our display. Telephone Main 6688 or A5517.
Portland Railway, Light & Power Co.
First and Alder Streets

Hay's Hair Health

Never Fails to RESTORE GRAY or FADED HAIR to its NATURAL COLOR and BEAUTY
No matter how long it has been gray or faded. Promotes a luxuriant growth of healthy hair. Stops its falling out, and positively removes Dandruff. Keeps hair soft and glossy. Refuse all substitutes. 2 1/2 times as much in \$1.00 as 50c size.
IS NOT A DYE.
Philo Hay Spec. Co., Newark, N. J.
51 and 50c bottles, at druggists' WOODARD, CLARKE & CO.

Gold by the Millions and Still Increasing

SUCH IS THE HISTORY OF THE COEUR D'ALENE

ADVANTAGEOUS LOCATION

Our properties are situated 16 miles due north of Wallace, one and a half miles east of Delta, and five miles south of Murray, being 220 acres and comprising the following full claims: Poticie, Austin, Phillip, Potlatch, Karl, Florence, Arthur, Guy, Maud, Black Bear No. 1 and Black Bear No. 2. Part of this property lies in the Murray Gold Belt, and the east portion of the Hercules Silver Belt.
To the northwest of these properties are the famous Pritchard Creek Placers, from which millions of dollars have been taken out within the last 25 years, this being the locality in which the first gulch mining (to any great extent), was carried on in Idaho. On either side, and extending along the base line of our claims, are a number of Placers which have been heavy producers of coarse gold and are still being successfully and profitably worked. To the north of these properties are the Kimball Placers, which are being worked with good results and at enormous profits.

BIG GOLD VALUES

A practical mining man would naturally conclude that wherever such a large amount of coarse gold was found in gulches, it showing evidence of little wear and of not having traveled any great distance, and the quartz showing little effect of the trituration, the proximity of a heavy decomposed quartz ledge of considerable richness is evident.
A large porphyry dyke, with a strike northeast to southwest, crosses the northeast corner of the "Arthur" claim and comes out on the south end line of the "Poticie" claim. On the north side of this dyke and in contact between the quartzite and porphyry, crops a heavy lead-oxidized iron quartz, which is the source of placer gold in the adjacent properties below. On the northeast end a wash in the side of the mountain discloses the outcroppings of this ledge for about 100 feet, and has deposited thousands and thousands of high grade ore in the gulch below. From the outcrop of this ledge, which is 18 to 20 feet wide, samples show free gold in pieces as large as kernels of wheat, down to fine specks.
ECONOMICAL TRANSPORTATION—SAFETY
These mines are situated about half mile from the

county road. A good wagon road has been built from the county road to the present tunnel workings. Five miles to the north is the Idaho and Northern Railroad at Murray and to the west there is a good even grade to the Idaho and Northern Railroad at the junction of Beaver and Pritchard Creeks. The Northern Pacific Railroad extends to the Treasurer Vault up the Nine-mile Creek, about seven miles from this property. This road is in excellent condition, over which a stage runs daily.
There is sufficient timber on the claims for all mining purposes, and with such conditions, the development of our properties and the installation of our mill and other equipment for the treatment of our **FREE MILLING GOLD ORE**, the shipment of our **GOLD BULLION** without danger of loss, and the transportation of our **HIGH GRADE SILVER LEAD ORE** to smelter, makes our operations economical and insures large dividends and profits to our stockholders.
IN THE CIRCLE OF MYSTERIOUS RICHES
A MILLIONAIRE MAKER
From all indications we will have one of the largest

producing mines in this already famous district of bonanza properties. The reputation of the Coeur d'Alene is world-wide, and there has been no record of failures, wherever the mines have been conservatively and intelligently prospected and developed. The veins show increase with and value of ore as depth is obtained, and our properties are now developing into this condition.
MILLIONS IN DIVIDENDS
A WONDERFUL PRODUCTION
The remarkable increase in values in the Coeur d'Alenes since 1884, starting with the production of \$258,375.00 in gold, silver and lead, until 1887 where it hit the million dollar point, and from then gradually increasing until 1903, when it reached a production of over \$11,000,000.00, and from then on to the present time, when the official figures of the state of Idaho show the enormous production of \$19,560,329.00, giving a grand total up to that time of \$146,283,361.00. The big mines of this district seem to be growing larger, and it seems to be only a question of the number of men available in mining and milling facilities to make the production of these mines

reach any amount desired. This country is certainly the miners' paradise.
OFFICERS SERVE FREE
No officer of this Company receives a cent for salary—their services are given free and will so continue until this Company is paying dividends to its stockholders. This is done so that every cent may be used for development and equipment and to the best interest of our stockholders.
FIRST ALLOTMENT
This is the first allotment of stock ever offered to the public, and after this allotment is sold there will be no more stock for sale except at a very much increased price. So those who can, had better buy from this first allotment and get the benefit of the early advancement in price.
There is not much more stock at Ten Cents per share, and those buying now are getting a snap.
ENGINEER'S REPORT FREE
We will send Engineer's report free to all who will write for it.

POTICIE MINING COMPANY

RALEIGH BUILDING, PORTLAND, OREGON
Capital \$1,500,000, Shares Par Value \$1.00. Treasury Stock 900,000 Shares

Officers and Directors
P. L. AUSTIN, Pres. and Treas., Portland, Or.
LOUIS MEYER, Vice-Pres. and Sec., Portland, Or.
JOHN H. LAHR, Delta, Idaho.