

THE SNAKE STOPS AN AWFUL LEAK

Consular Service Reorganized Along Lines of Horse Sense.

(Special Dispatch to The Journal.) Washington, July 1.—The most momentous changes that the United States consular service has experienced since its establishment take place today with the coming into effect of the act passed by the last session of congress providing for a complete reorganization of the service to meet modern requirements.

The reorganization results in the closing of the offices, the transfer of seven others and the establishment of 15 new offices. Of the 28 offices that are closed nine are located in Germany, nine in Canada and the 10 others are scattered over the rest of the world.

Useless Consulates Cut Out. These changes were decided upon because a redistribution of the various posts was found necessary to protect the interests of American manufacturers abroad. Many of the consulates abolished were established years ago for reasons which were regarded as sufficient at that time, but which no longer exist.

Example of Ancient Stupidity. In some instances the posts abolished have for the last several years not only been not paying expenses, but some have actually been carried on the list at a dead loss of several thousand dollars.

Where All Hope Stops. When a man or a woman has never learned what Sxine Pills will do for a nervous person they are apt to lose hope when they become acquainted with them.

DIDN'T LIKE TO BE CALED A COOK

George Y. Yamaya, the Japanese tooth puller, who is seeking to compel the state board of dental examiners to give him a license, struck a snag in the circuit court yesterday that neither he nor his lawyer could extract.

A Sane Fourth.

Cool, shady groves. Free vocal and instrumental concerts. Everything refreshing. Afternoons and evenings. No bombs or explosions.

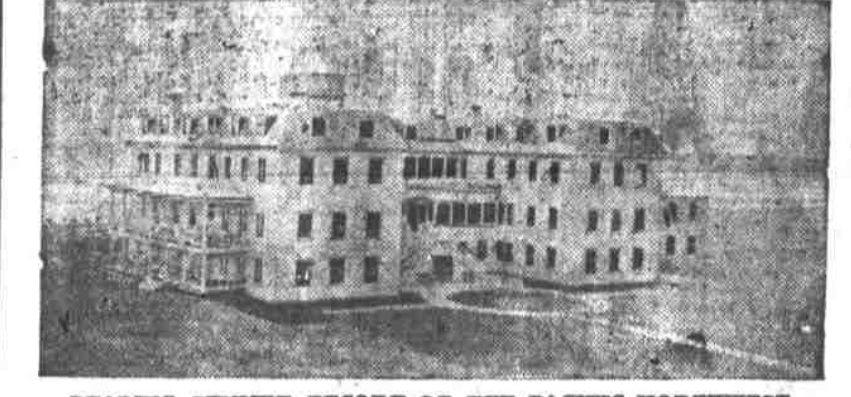
ABSOLUTE SECURITY.

Genuine Carter's Little Liver Pills.

Must Bear Signature of Dr. J. C. Carter. See Fac-Simile Wrapper Below. Very small and so easy to take as sugar.



THE BREAKERS HOTEL AMERICAN PLAN.



LEADING SUMMER RESORT OF THE PACIFIC NORTHWEST. Electric Light, Steam Heat and Cold Salt Water in Every Tub. Buy Tickets to Breakers, Pacific County, Wash. Postoffice Address, Breakers, Wash.

THE ONLY ABSOLUTELY FIRE-PROOF HOTEL IN PORTLAND

HOTEL HEYSER

CORNER EAST THIRD AND BURNSIDE STREETS. European and American plan. Rates \$1 per day and upwards. Telephone in every room. Private baths. SPECIAL SUNDAY DINNERS 8 to 8 p. m. 75c

COMMERCIAL TRAVELERS

As well as other travelers who come to Portland and make their home at

THE CORNELIUS

corner Park and Alder, are all delighted with its appointments and furnishings.

JOURNAL GIRL HAS WILD RIDE ON NIGHT STAGE

Miss Hilda Brant, who has gone to Coos county to look after The Journal's third annual scholarship contest there, had a thrilling experience en route and writes an interesting account of it, as follows:

"Yesterday morning at 6 o'clock we left Roseburg in a muddy-looking machine, composed of three wooden seats and a wagon bed about 4 by 14, drawn by four horses. Our ride was broken into three parts—first, from Roseburg to Camas Valley; second, from Camas Valley to Remote; and then from there to Myrtle Point. At the end of each of these rides we changed drivers and horses. During the first third of the way our crouched position on the hard seats and over several hundred pounds of mail was not noticed to a great extent. Our thoughts were busy with the beautiful scenery as we sped on.

"Our first driver did not hesitate in telling us wily stories and pointing out the place where, time after time, the stage and its inmates had been robbed, and a tree where a man had been hanged. There is one tree in particular along this road which is called the Robbing Tree. This spot seems to be a favorite resting and working place for holdups. But fortunate for us no serious accidents occurred before we arrived at Camas Valley, 27 miles from Roseburg, at 12:30 p. m. for a typical farmer's dinner. After the short course of 20 minutes had lapsed we heard a loud rattle which we were informed was the driver's signal for the starting of the stage. At this point we lost two passengers who thought too much of life to risk it further.

"During the next change the driver had no time to tell stories nor was he hauled. It was one of the roughest rides one could ever experience in the Coast range. First, the two wheels to our left were straight up in the air while the other two were 15 feet down in a mud hole. This continued on for a course of 15 miles without sign of a smooth path. Every mile of our way led us up into the mountains until we were at a point at 7 p. m. where we ate supper.

"Again, after a few minutes, a similar signal as before was heard and we had to rest behind the tall trees on the mountains, and darkness was slowly creeping on. So far, the ride had been a mad one, there was no rain to drown nature's happy life and no sunshine to dry it up. The atmosphere was the worst, the temperature from early morning till late at night.

"On this trip of 25 miles the driver pointed out a house where he had seen ghosts many times, at midnight while traveling through alone. Shortly after we had passed this haunted house a dim light was seen in the distance, slowly brightening as it came nearer. The driver signaled, but there was no response until the horses from our coach and those from another touched noses on a right angle in a narrow road. There was the puzzle what to do next. After much consultation the leaders from our team were un hitched and then our team was driven into a narrow canyon, while the other two passed. We discovered that these people were moving and had their house on wheels. Our coach was backed from the wilderness and we sped on our way.

COMMERCIAL HOTEL SEASIDE, OREGON

UNDER NEW MANAGEMENT. American and European Plan. Centrally and Conveniently Located. Near Depot. Convenient to Beach. Hot and Cold Water in Rooms. EXCELLENT TABLE. LOW RATES. E. H. WOODWORTH, Proprietor.

Colonial Hotel

RATES \$2 PER DAY AND UPWARD. LINDSLEY & SON, Proprietors

New Building—New Furniture

RIGHT AT THE BOUQUING SEA. Electric Light in Every Room. Free Bus to and From All Trains. Good Fishing, Boating and Bathing.

SEASIDE, OREGON

The Shelburne House SEASIDE, WASH. Is now open for the Summer. This is one of the most pleasant places on the beach, with large, shady yard.

Pacific View Hotel

NECANIUM STATION, SEASIDE, OR. Open Winter and Summer. Under New Management. Most conveniently located hotel on the beach for surf bathers. Neatly furnished rooms for light housekeeping. Use of range for cooking utensils free.

THE WHITEHOUSE

LONG BEACH, WASHINGTON. A favorite hotel with Long Beach visitors; large, comfortable rooms, overlooking the ocean; unsurpassed view. One block south of station.

HARVEST HOME

Three Blocks South of Depot. LONG BEACH, WASHINGTON. Now Open for the Season. Prices, \$1.50 per day, \$8.00 per week. Bed 50 cents. Meals, 35 cents. Children under 10 years, half rates.

NORTH BEACH INN

NEWTON STATION. OPEN JUNE 25. Fine ocean view. Special attention paid to cuisine. Sunny, well-furnished rooms.

WILHOIT SPRINGS

Hotel—Now Open. Stage leaves Oregon City, Tuesday, Thursday and Saturday until July 1, then daily at 9 a. m. Fare \$1.50. F. W. McLean, proprietor.

THE BRITT

LONG BEACH, WASHINGTON. The Best Meals on the Beach, as Usual.

PRIVATE ROOM and BOARD

HOME COOKING. MRS. SARAH CHAMBERLIN LONG BEACH, WASH.

A SANE FOURTH

No better way presents itself to those who desire to spend a quiet Fourth and get away from the heat and noise of the city than to take the trip on the BAILEY GATZERT to CASCADE LOCKS, viewing the scenery at its best and the COLUMBIA RIVER at the flood stage.

WOMEN MUST PRACTICE HIGH STEPPING—CAR STEPS NO LOWER

Vice-President F. I. Fuller of the Portland Railway, Light & Power company has written a letter to City Auditor Barbur in reply to the request of the Council of Jewish Women asking that the steps on the streetcars be lowered. Fuller stated in his letter that the steps on the Portland cars were lower than in most cities, and that it would be impracticable for them to be lowered any more.

THE Big Head

is of two kinds—concent and the big head that comes from a sick headache. Does your head ever feel like a gourd and your brain feel loose and sore? You can cure it in 30 minutes by acting on your liver with Ballard's Herbine. Isn't it worth trying for the absolute and certain relief you'll get? Sold by Klummore Drug Co.

BINGHAM WARM SPRINGS NOW WE-NA-HA SPRINGS

This famous old Blue Mountain Resort will be

Open June 15th

For the Season of 1908 Under the management of J. A. BORIE, the new owner.

Roads, bridges, buildings and equipment repaired and renewed. Hotel and dining-room service will be a special feature, being under the care of the best steward and chef obtainable. For further particulars write to

J. A. BORIE, Prop. We-Na-Ha Springs Gibbon Postoffice, Umatilla County, Oregon.

SEE THE OCEAN HOTEL MOORE

CLATSOP BEACH - SEASIDE, OR. THE CLIFF HOUSE OF OREGON. Directly on the beach, overlooking the ocean. Hot salt baths and surf bathing; recreation pier for fishing; sun parlor; electric lights; fireplace and furnace heat. Sea foods a specialty. Fine walks and drives. Rates, \$2.50 and \$3.00 per day.

For particulars apply to the Danmoore. DAN J. MOORE, Prop.

ON YOUR WAY TO THE BEACH

THE OCCIDENT HOTEL

Astoria, Ore.

The Hackney Cottage

SEASIDE, WASHINGTON. NOW OPEN FOR THE SEASON. Delightfully located on most beautiful and pleasant spot on the beach. Unsurpassed surf bathing, home comforts, excellent table board. Accommodations greatly increased. Special rates by the week and season. Make your reservations by mail.

NECANIUM INN

SEASIDE, OR. Located at the turn of the new boulevard, unsurpassed surf bathing, beautiful grounds, lots of flowers, a most desirable place for families and unaccompanied young ladies. Noted for its excellent home cooking. Terms \$2 per day.

Sunset Cottage

Open for guests. One block from ocean. As low a place to spend the summer. First-class accommodations. Reasonable family rates.

For a Sane Fourth

Go to CLATSOP BEACH Via the Astoria & Columbia River R. R.

TRAINS LEAVE PORTLAND SATURDAY, 8:00 a. m., 2:20 p. m. and 5:30 p. m. RETURNING, LEAVE SEASIDE, Saturday, 7:15 a. m., 4:50 p. m. Sunday, 7:15 a. m., 4:50 p. m., 6:30 p. m.

ROUND TRIP TICKETS, good going Saturday or Sunday, returning until Monday \$3.00 Good six months \$4.00 Five-ride Commutation Tickets \$15.00

TICKET OFFICES THIRD AND MORRISON STREETS UNION DEPOT

CADILLAC HOTEL

N. E. Cor. Eddy and Leavenworth Sts. SAN FRANCISCO.

Modern and up-to-date Class A structure; 175 rooms, 70 baths; American plan, \$2.50 per day and up; European plan, with bath, \$3.50 per day and up. Special rates to permanent and commercial. Unlimited sample space.

SAN FRANCISCO, CAL. R. H. Gately, Manager.

LOCKSLEY HALL HOTEL

SEASIDE, OREGON. Most popular and best family hotel at Seaside. Thirty rooms overlook the ocean, with private bath. Strictly modern in every detail. Free bus meets all trains. RATES \$2.50 AND \$3.00. SPECIAL RATES BY WEEK OR MONTH. QUINBY & SON, Props.

NORTH BEACH

Is the busiest and most brilliant pleasure haunt in this part of the country this summer. Its thousands of devotees rejoice to learn that they can now go and come on a regular schedule, independent of tides.

The Popular Excursion Steamer of the O. R. & N. Co.

T. J. Potter

Leaves Portland, Ash Street Dock, DAILY EXCEPT SATURDAY AND SUNDAY, 8:30 A. M. SATURDAYS ONLY, 2:00 P. M.

MAGNIFICENT DAYLIGHT TRIP

DOWN THE COLUMBIA Direct connection at Megler with the Ilwaco railroad, thence to the beach resorts. See published schedules

EXCURSION RATES FROM PORTLAND

Season Tickets, on sale daily \$ 4.00 Saturday-to-Monday Tickets 3.00 Five-Trip Commutation Tickets 15.00

Reduced Rates Prevail From All Parts of the State Purchase tickets at the City Ticket Office, O. R. & N., Third and Washington Streets.

WM. McMURRAY, General Passenger Agent Portland, Oregon

NEWPORT

YAQUINA BAY Oregon's Matchless Beach Resort

The Place to Go for Perfect Rest and Every Conceivable Form of Healthful and Delightful Recreation

ITS FACILITIES ARE COMPLETE—Best of food, and an abundance of it. Fresh water from springs. All modern necessities, such as telegraph, telephone, markets freshly provided every day. Fuel in abundance. Cottages partly furnished or unfurnished to be had cheaply. Strict municipal sanitary regulations.

'Summer Excursion Rates

From All Points in the Northwest NEWPORT is reached by way of the Southern Pacific to Albany or Corvallis, thence Corvallis & Eastern Railroad. Train service daily, and the trip a pleasure throughout. Leave Portland 8:15 a. m.

RATES FROM PORTLAND Season tickets, on sale daily \$6.00 Saturday-to-Monday tickets \$3.00

Correspondingly low rates from all other points. Call at the City Ticket Office of the Southern Pacific, Third and Washington streets, in Portland, or at any Southern Pacific agency elsewhere, for complete information.

WM. McMURRAY General Passenger Agent, Southern Pacific Co., Portland, Or.

For a Sane Fourth

Go to CLATSOP BEACH Via the Astoria & Columbia River R. R.

TRAINS LEAVE PORTLAND SATURDAY, 8:00 a. m., 2:20 p. m. and 5:30 p. m. RETURNING, LEAVE SEASIDE, Saturday, 7:15 a. m., 4:50 p. m. Sunday, 7:15 a. m., 4:50 p. m., 6:30 p. m.

ROUND TRIP TICKETS, good going Saturday or Sunday, returning until Monday \$3.00 Good six months \$4.00 Five-ride Commutation Tickets \$15.00

TICKET OFFICES THIRD AND MORRISON STREETS UNION DEPOT

CADILLAC HOTEL

N. E. Cor. Eddy and Leavenworth Sts. SAN FRANCISCO.

Modern and up-to-date Class A structure; 175 rooms, 70 baths; American plan, \$2.50 per day and up; European plan, with bath, \$3.50 per day and up. Special rates to permanent and commercial. Unlimited sample space.

SAN FRANCISCO, CAL. R. H. Gately, Manager.

LOCKSLEY HALL HOTEL

SEASIDE, OREGON. Most popular and best family hotel at Seaside. Thirty rooms overlook the ocean, with private bath. Strictly modern in every detail. Free bus meets all trains. RATES \$2.50 AND \$3.00. SPECIAL RATES BY WEEK OR MONTH. QUINBY & SON, Props.