

K. OF P. LODGE TO MEET IN PORTLAND

Grand Lodge Scheduled to Meet in This City June 16.

Oregon Knights of Pythias will hold their grand lodge in Portland at the Knights of Pythias hall, Eleventh and Alder, beginning June 16, for three days. The call for the lodge has been sent out and arrangements have been made for its convention in Portland. It is expected that at least 200 knights from all parts of the state will be in attendance and that the sessions of the grand lodge will be the most successful ever held in the history of the order in the state.

The first day of the session will be given over to the election of officers for the coming year, the hearing and adoption of the reports of the retiring officers and with general business.

The second day of the session will be occupied with routine business during the early hours, while in the afternoon the visiting members will be taken in tow by the Portland lodge men and entertained in various ways until evening. In the evening the Portland members of the order will entertain the grand lodge members with a banquet to be given at the Commercial club, for which special preparations are now being made.

During the evening also will be the session of the Dramatic Order of Knights of Klondike, which will be the big theatrical event of the grand lodge session. The third day of the grand lodge will be given up to the completion of the business of the lodge, the qualification of the newly elected officers and the outlining of plans for the coming year.

Grand Chancellor John M. Wall of Hillsboro, Grand Keeper of the Records and Seal L. R. Binswanger, in Clatsop county, Ore., and Grand Representative W. M. Calk and Judge W. L. Bradshaw of The Dalles are all expected to be in attendance on the lodge.

FABULOUS FIND OF PLACER GOLD

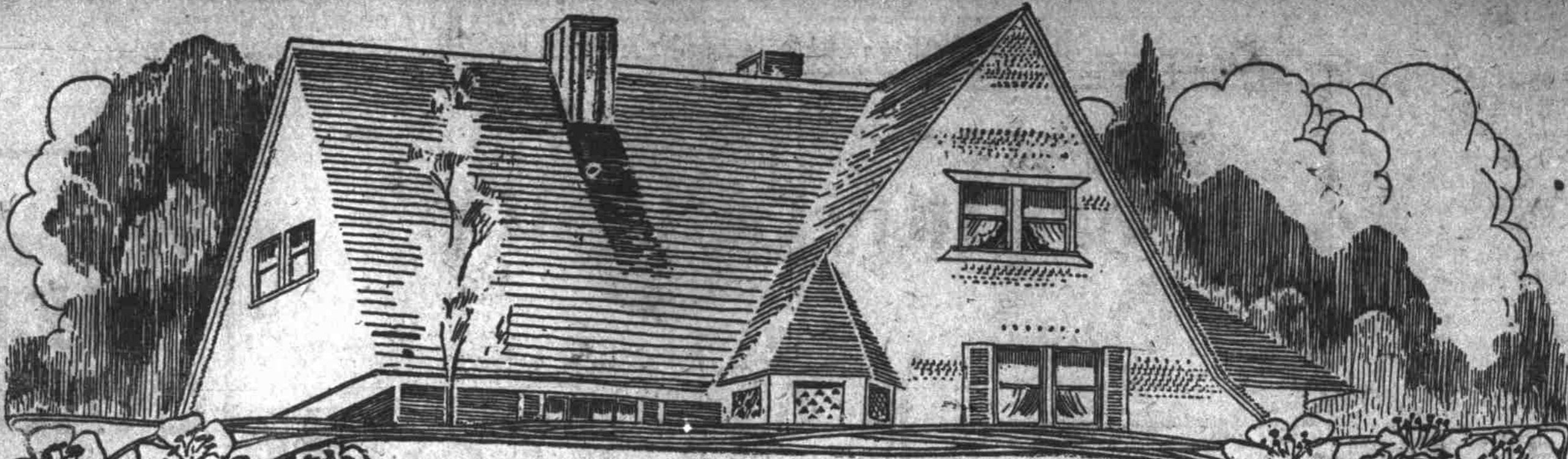
Prominent Portland People Getting a Company Together to Mine It Out of the Earth.

A truly fabulous find of placer gold has been unearthed at the base of the mountains in the forest reserve in Idaho county, Idaho, directly east of Wallawa county, Ore., and but a short distance from this state's line. To secure this treasure a company was recently incorporated with Hon. John B. Cleland, judge in department No. 3, state circuit court, at its head, and associated with his as officers and directors of the organization are George L. Peaslee of the Peaslee Bros. company, owners of one of Portland's large job printing establishments, vice-president; Richard C. Hart, superintendent of United States lighthouses for this district, secretary and treasurer; H. B. Perks, a mining engineer of international reputation, engineer in charge and manager at the mines, and W. A. Cleland, brother to Judge Cleland, W. W. Peaslee, also of the Peaslee Bros. company, and Captain J. F. Boone, a retired river steamboat captain, directors. H. S. Harcourt, the well known newspaper man, is in charge of the company's office affairs, and these stockholders persons in all parts of not only Portland and the Pacific northwest but as far as the New England states, in the great number of placer miners, many of whom have known of the existence of the wonderful treasure bed for years, but were not able to work for the reason that it required \$20,000 at the start to procure machinery and piping with which to equip the property, the first move of the company was to have Mr. Perks engage a corps of miners and thoroughly explore and map the ground, which covers 640 acres, and with its arms, is 10 miles in length. This was attended to during the months of October and November, 1907, and so rich was the tract that the matter was kept secret until all legal interests had been attended to, which was carefully done by the two attorneys in the company. When all was ready for the launching of the enterprise, apartment 220 Commercial club building, this city, was secured, and an issue of 120,000 shares of treasury stock was put upon the market at 25 cents per share, its par value being 50 cents per share. This has been largely subscribed by relatives and friends of the incorporators, and it is expected will all be taken very likely this month, or before the end of July. Mr. Perks has a small force of men working all winter on the company's ditches, and now has 12 miners and laborers employed installing a sawmill and preparing for the reception of more than 100,000 tons of placer material en route. So soon as all is landed on the ground a larger force will be set at work and by August 15, or not later than September 1 it is expected to have the company's plants at work, and by December 1 the company is confident it will return to each stockholder the entire amount of his investment, and for the next 25 years pay dividends of from 200 to 400 per cent on all outstanding stock. This is the prediction of the men behind the proposition, and those who most intimately know them will at once agree that they are not any of them addicted to visionary illusions.

A question often and reasonably asked by many persons who for the first time have read of this wonderful channel bed of gold, is how that it has lain idle and untouched for half a century when more than \$100,000,000 were mined from the gulches emptying into it between 1860 and 1885. The answer is that this ground could not be mined without gravel elevators, and it never has been possible to get these into that valley until now—at least no one ever tried it before. A handsome booklet explaining it, by addressing the company's office, and it is certainly worth reading, which, if one desires to invest in the company's shares or not. But if he sells on installment, he would be a poor man who could not afford some of its shares, and these will most likely pay back at least twice their cost each year.

Our fellow citizens and neighbors are to be congratulated on the possession of these Florence meadows, as they are called. There is not so much as the smallest doubt that the money pay into the pockets of the company's shareholders hundreds of thousands of dollars. There is no proposition more in this enterprise, either, which makes it a most admirable corporation.

WOULD-BE SUICIDE GOES TO JAIL
Forty-five days in the city jail was the sentence given Lizzie Johnson by Judge Cameron yesterday for attempting to commit suicide in rooming house at 211 First street. Patrolman Fred Graves saved the woman's life. He was notified that she was in a dangerous condition, caused from drink, and on forcing the door to her room found her with her mouth under a faucet trying to wash down 50 antiseptic tablets. She was removed to St. Vincent's hospital and yesterday was able to appear in the municipal court. She has been before Judge Cameron before for similar suicidal attempts while under the influence of liquor. The girl's father is said to be a wealthy farmer living near La Center, Wash.



Homes for the Newly-Wed

In case you are contemplating taking a wife this summer we suggest that you call upon us now and ascertain just what we will do in the way of furnishing a little home for you. That will remove much of the doubt which may have some bearing on your plans. You will know just exactly where and how you stand and you will have some practical information to give the young lady which will aid her in making up her mind. Possibly this seems like making business out of romance, but the young lady will feel more like entering the married state if she knows what she has to look forward to. We are making a specialty of preparing homes for young married people, and we have studied out the matter from the standpoint of the average salary drawn by young men. The result is that we know just what kind of a proposition will suit you and how to arrange the purchase so that it will be the least possible burden to you. We are not operating a matrimonial bureau, but we are making many marriages possible that could not occur if the intending groom was obliged to pay cash for all the household goods he needed.

Special Sale on Reception Chairs



This one beautifully finished; regular price \$10, Gadsbys' price **\$5.75**

\$35.00 Range \$29.00



Leader Range
All are guaranteed for 10 years. Leader range, with high closet and duplex grate, spring-balanced oven doors. This is a heavy, substantial and durable range, made of the best quality cold-rolled steel; adapted for coal or wood; oven thoroughly braised and bolted; asbestos-lined throughout; nickel-trimmed; section plate top. Gadsby's price **\$29.00**

Refrigerators



We sell them for less; the white enamel kind, that saves ice, from \$10 to \$35.



This 3-Piece Parlor Suite Reduced to \$34.75

An exceptionally beautiful and attractive Parlor Suite of our own design; frame is of selected birch finished a dark mahogany and brilliantly polished. The splendid cushions rest on an entire foundation of best steel springs, with choice coverings in all the fashionable colors of linen velours. Price **\$34.75**

\$10 Folding Co-Card \$5.85

No better values anywhere. Folding Co-Cards, the kind that folds up flat, has nickel-plated trimmings, with springs under seat, upholstered in leatherette, has rubber-tired wheels. This is one of the greatest values ever offered **\$5.85**

Don't Buy Carpets or Rugs

Until You Have Seen Ours
REMEMBER WE HAVE A SALE ON

How Would This Look in Your Dining Room?



Has bent-glass ends, adjustable shelves; built of selected golden oak; positively the greatest bargain ever offered; Gadsbys' price is only **\$17.00**

Brass Bed Sale



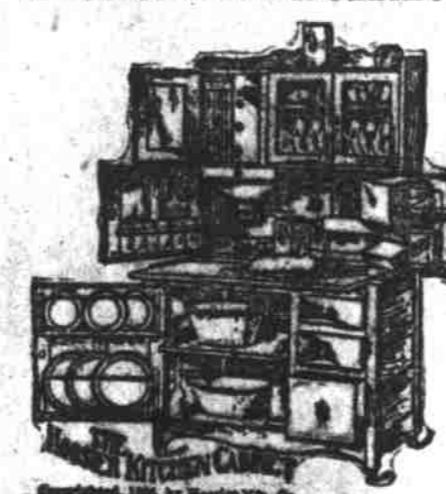
Now's your chance to buy one cheap—20 per cent discount on the whole line; 50 patterns to select from.



MISSION DINING ROOM

Weathered oak is the wood used. And Gadsby has complete sets, consisting of Extension Tables, Chairs with rush or Spanish leather seats, Sideboards, China Cabinets, Serving Tables, Morris Chairs, Library Tables and Book Cases. Besides the library, hall and dining-room, this type of furniture is admirably adapted to the summer home. You could leave it there season after season because it requires so little care owing to its plainness. The designs are copies of the handiwork of the old Jesuit fathers, with a little softening of the lines and a touch of comfort which would have delighted those old craftsmen. You will find Gadsby's entire exhibit a most interesting one, and Gadsbys' price on this Mission Furniture is extremely low, and therefore within the reach of everyone.

Hoosier Kitch'n Cabinet



THE BEST IN THE WORLD.
Call and see them.
Here is something that will save hours of kitchen work—and make it easier and pleasanter—a stop-saving kitchen convenience which combines pantry, cupboard and work table.
NOT HIGH-PRICED EXTRAS



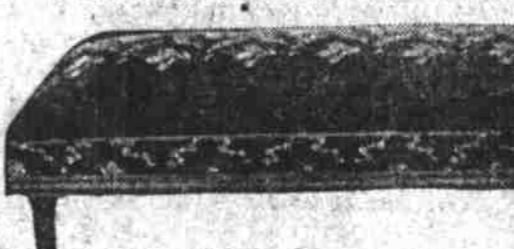
LADIES' DRESSING TABLES

Something a lady always wants. She can sit down to dress her hair.

\$10

We have a beautiful line in all woods.

These Couches Go Like Hot Cakes



Couch is upholstered in two-tone velours; beautiful greens, reds and browns;

Extra Special

\$4.50

SPECIAL BARGAINS THIS WEEK ONLY

- 300 Hotel Bureaus, with mirror; regular price \$10, now **\$6.95**
- 120 Combination Washstands, ash, two drawers and cabinet; regular **\$3.85**
- \$6, now **\$2.25**
- 100 enameled Iron Beds; regular \$3.50, this week **\$2.25**
- 100 birdseye maple Princess Dressers, with 36-inch beveled mirrors; regular \$31 style, this week they go **\$17.50**
- 1,000 woven wire Springs; regular \$2.25, now **\$1.75**
- 500 white cotton-top excelsior Mattresses; regular \$4, special **\$2.90**
- 14 Dressers in solid oak, mirrors 24x30, French beveled; regular \$20, now **\$14.75**
- 17 Dressers in Pacific oak, beautifully flaked; regular \$16.50, special **\$12.40**
- 33 birdseye maple Bedsteads, 6 feet high, very artistic; regular \$15, this week **\$6.50**

Remember We will not be undersold

Wm. Gadsby & Sons

CORNER WASHINGTON AND FIRST STS.