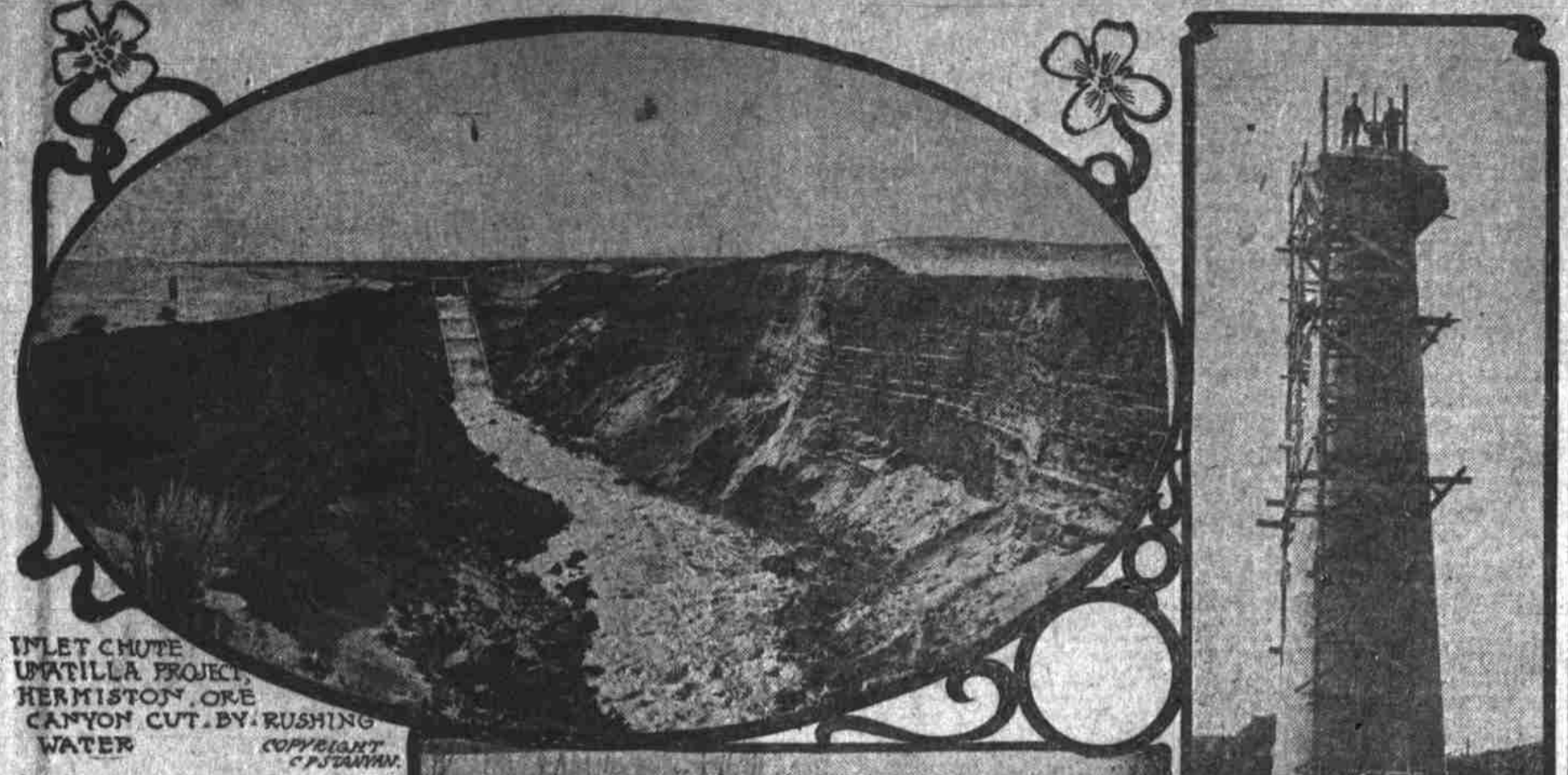


HERMISTON CELEBRATION MARKED EPOCH IN IRRIGATION DEVELOPMENT IN THIS STATE



INLET CHUTE UMATILLA PROJECT, HERMISTON, ORE. CANYON CUT BY RUSHING WATER. COPYRIGHT C. P. DANHAM.

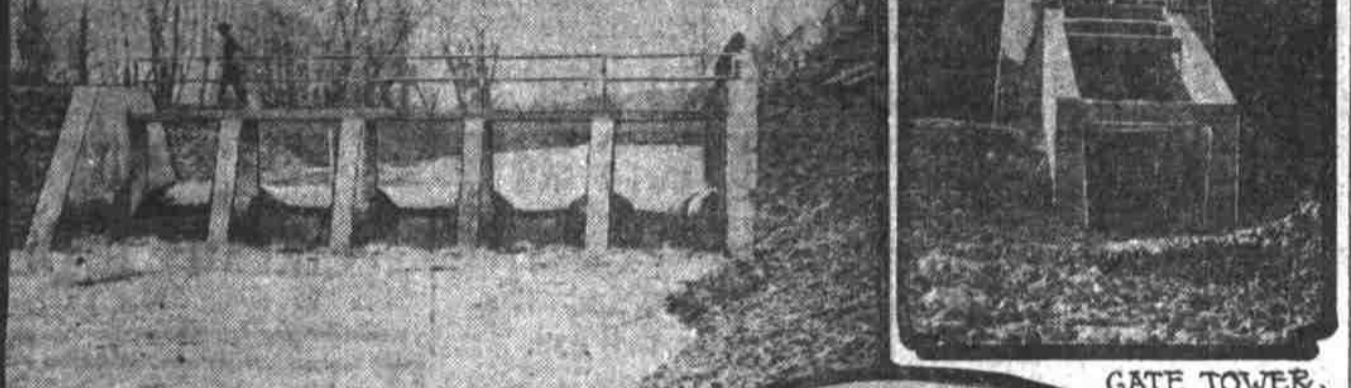
GREAT FIELD FOR NEW CROPS

Government Project Opens Many Thousands of Acres to Settlers.

An occasion which attracted attention generally throughout the state and particularly in the eastern part was the celebration held at Hermiston, Oregon, last Thursday, in commemoration of the formal opening of the gates of the Cold Springs reservoir of the Umatilla government irrigation project. Hundreds of spectators witnessed the christening of lands that for decades have been classed as arid tracts. It was a day of general rejoicing over the magnificent triumph that has been achieved by man's ingenuity and skill. The Umatilla irrigation project is the first enterprise of its kind that the government has taken up wholly in Oregon and therefore marks an epoch in the transformation of the entire Umatilla valley.

The task has been no small one, involving years of labor and the expenditure of a million or more dollars. Owing to the fact that the site which was chosen was so admirably adapted to a natural reservoir it was necessary to bring the waters of the Umatilla 25 miles across the country, giving this channel the appearance of a miniature river winding its way in and out and finally seeking relief in the depths of the monstrous reservoir. Such construction costs are expensive and there is no better testimony to the high estimates at which the project is held than the mere fact that the government considered such a costly expenditure well worth while.

Main Feed Canal.
The main feed canal measures 15 feet across, on the bottom, 25 feet on top and 25 miles long and will carry a depth of 1 1/2 feet of water. Since March



GATE TOWER, COLD SPRINGS DAM

REGULATING WEIR STORAGE FEED CANAL, UMATILLA PROJECT

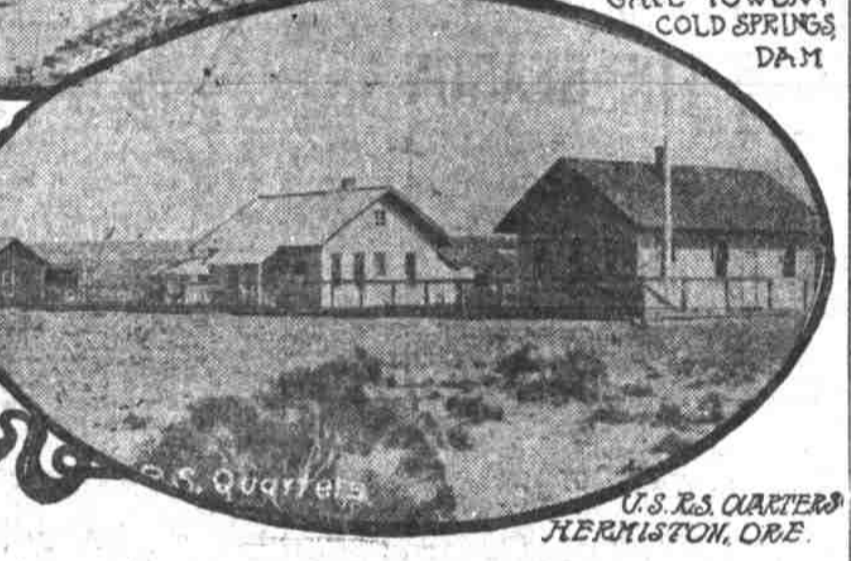
It has averaged a flow of over 100 second feet which has been received into the storage reservoir over a series of 11 concrete drops constructed like stair steps, and which break the force of the fall of 80 feet and prevent erosion.

The basin which nature has provided and man utilized to promote this gigantic undertaking covers about 1,700 acres, will hold 50,000 acre feet of water available above outlet and is 3 1/2 miles long.

The dam which has been constructed across the canyon is 99 feet high, 500 feet wide at the original surface of the ground and 33 feet long on the crest. This piece of workmanship is a masterpiece of its kind and has been one of the most interesting of the works connected with the project. Over 99 per cent of the work has been executed and within a few weeks the entire structure will be complete.

On the south side of the canyon is the outlet conduit under the dam, which empties water into the main distributing canal. The flow of water from dam to outlet conduit is regulated by sluice gates operated from the gate house on top of the concrete gate tower which is 70 feet high and has on its exterior a water gauge of 60 feet which at a glance will show depth of water over the outlet and the acre feet stored.

This spring the canal has been carrying approximately 60 second feet of water. This flow is divided into three ditches so as to satisfactorily convey



U.S. RE. QUARTERS, HERMISTON, ORE.

the water to the various parts of the project. Distributing laterals form a veritable network of waterways and are ample to convey water to the 1,000 acres open for settlement. In addition to the laterals there a series of pipe lines used to siphon water from high elevations to the low lands where the drop is more than three or four feet.

The building of so extensive a pipe system is calculated to aid in enlarging the distribution system when more land is reclaimed.

Yesterday water was flowing through each and every part of the distributing system, thus conveying water to every portion of the 7,000-acre tract. This is an acreage once called as "worthless land" given the essential to make it rank among the most productive in the northwest.

Government experts have made various tests of the soil and claim it is especially rich and of great depth and particularly adapted to the raising of fruit. Reports from the experiment station of the Oregon Agricultural college recommend a variety of fruits, vegetables, and small grain but the valley is preeminently a fruit country. Apples, peaches, apricots and cherries will grow profusely and the grapes will find its natural home in this climate and soil.

In the center of the Umatilla project the city of Hermiston has come into existence and taken on a growth unsurpassed in the history of the northwest. It is located on the main line of the O. R. & N., is 25 miles from Pendleton, the county seat, and 191 miles from Portland. The census two years ago credited the town with 25 inhabitants which was doubtless exaggerated a dozen or more. This year there are between 600 and 700 people within its gates. The irrigation city boasts of four brick blocks, a \$7,000 concrete block church and a concrete school-house in the course of construction, which will cost \$10,000 when completed.

SCHOOL DISCOVERED IN INDIA WHICH EDUCATES BOMB-MAKERS

(United Press Leased Wire.)
London, May 30.—The foreign office has received reports of a remarkable investigation in India which exposed the operations of a complete school for the higher education of bomb-makers and bomb-throwers, under the direction of experts.

At the head of the school was a native chemist of considerable learning and much knowledge of explosives. The system of educating and training terrorists was conducted along the most elaborate and complete lines and it is believed graduates from the school have been sent to various parts of the world.

The establishment of the school involved considerable financial outlay, including the building of a factory where bombs were made and experiments conducted.

The detectives found a large stock of explosives and chemicals, a well equipped laboratory and a complete technical library.

The primary object of the school was to prepare men for work in the ranks of the secret revolutionary organization in all parts of India, though it was es-

tablished that terrorists in several parts of Europe were aware of the existence of the school and undoubtedly were making use of its facilities.

NEWS FORECAST OF COMING WEEK

June Will Usher in Season of Conventions, Conferences, Etc.

(United Press Leased Wire.)
Washington, D. C., May 30.—The coming week will usher in the early summer season of conventions, conferences and college commencements. Of the conventions, those of a political character will have the center of the stage, while of the annual commencements that at the United States naval academy will probably attract most attention.

State-wide primaries in Georgia and Iowa will divide the attention of the politicians, south and north. In Georgia the Democratic gubernatorial contest between Hoke Smith, who is candidate for another term, and Joseph M. Brown, former state railroad commissioner, is the big issue. In Iowa the Republican contest between Senator Allison and Governor Cummins for the senatorship will be settled at the primary election Tuesday, as will also the contests for places on the state tickets.

Democratic state conventions will be held in Louisiana, Idaho, Arkansas and one or two other states for the election of delegates to the national convention. The spirited contest between Governor Fintell and Senator Jeff Davis has attracted considerable attention to the situation in Arkansas, and the result of the state convention in Little Rock next Tuesday is awaited with interest.

Throughout the south, and in other parts of the country as well, the centennial anniversary of the birth of Jefferson Davis will be observed next Wednesday. Exercises of a notable character will be held in Richmond, Atlanta, New Orleans and other leading cities.

Of religious, trade, fraternal and other conventions during the week there will be an unusually large number. Those that will attract more or less public attention will be the meetings of the International Order of Good Templars in this city, the National Wholesale Grocers' association at Atlantic City, the American Medical association at Chicago, the Southern Music Teachers' association at Mobile, and the International Association of Police Chiefs at Detroit.

\$5.00 Per Month

You Have Catarrh!
YOU have "tried everything" and "lost all confidence and a lot of money." WE KNOW THAT! But

YOU STILL HAVE CATARRH
And every time your heart pulsates your blood is distributing the poison throughout your system. YOU KNOW THAT!

Impondero-Therapy Cures Catarrh
We will restore your confidence, save you money and CURE your case NOW for

\$5.00 Per Month

IMPONDERO-THERAPY COMPANY
Merchants Trust Building, Sixth and Washington Streets, Portland, Oregon.
Office Hours—10 a. m. to 8 p. m.; Sunday 10 to 12 m.

Which One?
Male Voice—Hello!
Female Voice—Hello!
"Is this you, darling?"
"Yes, who are you?"

Only Reliable Jewelers Sell South Bend Watches

JUST as much care is used in selecting the jeweler to sell you a SOUTH BEND watch as is used in making the watch itself.

Not every jeweler, or person choosing to call themselves so, or who sell watches, is permitted to sell SOUTH BEND WATCHES. They are sold only by reliable, experienced jewelers, who can properly adjust and care for them. You can buy them nowhere except from our authorized representatives.

Every jeweler, before he can offer you a SOUTH BEND watch, before we will consent to sell him our watch movements must satisfy us that he is competent to assist you in selecting the watch exactly suited to your individual needs and adjust it, as every good watch must be adjusted by a jeweler, in such a manner as to give you the greatest amount of time-keeping service for your money.

When you buy a South Bend Watch, you know that you have had the most skilled watch expert in your community to assist you in your choice and look after your perfect satisfaction.

No other maker in all the world is willing to spend the time and money necessary to pick the jeweler.

We know it pays you and us, however, because we know, and every watch manufacturer and every good jeweler knows, that the watch that keeps perfect time in your pocket cannot be depended upon to keep time in another man's pocket.

The highest grade, most costly watch made will fail as a timekeeper unless it is adjusted to meet the individual requirements of the person carrying it.

You cannot adjust your watch yourself. Only a skilled watchmaker can adjust the delicate screws. A variation of one hundred thousandth part in the vibration of the balance

wheel makes a difference of one second per day; a difference of one one-thousandth part in the vibration means a gain or loss of a minute and a half a day, and a watch which varies that much is useless as a good timekeeper.

All the skill that money and experience can command is put into SOUTH BEND watches and, grade for grade, they are superior to any other watch made, but even a South Bend watch must be adjusted to the individual who carries it if time-keeping service is to be obtained.



A SOUTH BEND Watch

No extra charge is made for this service.

We gladly pay the jeweler for his assistance to you that we may know that every purchaser of a SOUTH BEND watch has a satisfactory time-piece.

SOUTH BEND watches cost no more than other watches of similar grade. Every SOUTH BEND watch, before it leaves the factory, must undergo tests

that are twice as severe as the worst strain you will ever give it. It is baked in an oven and kept for hours in a refrigerator at freezing point, to demonstrate that it will keep perfect time without being influenced by the changes in temperature. It must keep perfect time in every position and not be affected by the jars and jolts of railway trains, horseback riding, automobiling, etc.

You might freeze it in a block of ice without injuring it in the slightest degree.

No watch, no matter how good it might be in itself, sold in the way other watches are usually sold, could possibly give the service that a SOUTH BEND watch does. Your jeweler will gladly show you this beautiful modern watch and tell you about it. He will explain to you why SOUTH BEND watches keep time better than any other watch. If your jeweler is not our representative, send us his name and we will take the matter up with him personally, and also send you, free, our handsome book, "How Good Watches are Made," and a little device showing how a SOUTH BEND watch adjusts itself to every temperature.

South Bend Watch Co., Dept. N, South Bend, Ind.

BATTLESHIP KENTUCKY NOW IN QUARANTINE

(United Press Leased Wire.)
Navy Yard, Puget sound, Wash., May 30.—The battleship Kentucky, on which a case of smallpox was discovered, has been ordered to the United States quarantine station at Port Townsend until all danger of spreading the disease is past. The patient removed to the pest house has not developed a serious case yet according to the naval surgeons.

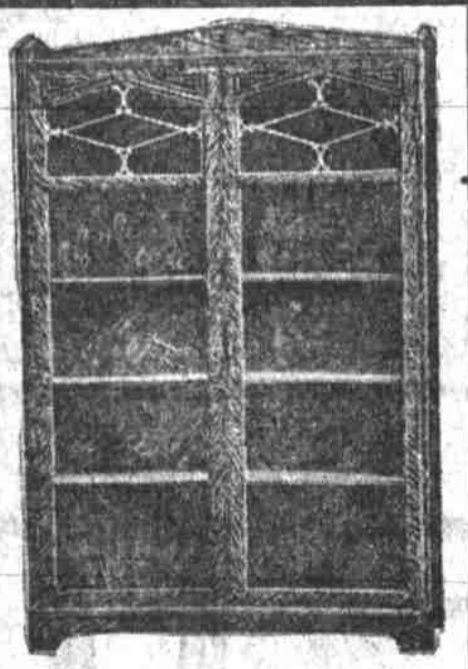
An order was received here this morning from the department ordering the torpedo boat destroyer Goldsborough and the torpedo boat Rowan

CRAZED WITH MESCAL MAN SLAYS AT DANCE

(United Press Leased Wire.)
San Diego, Cal., May 30.—Word reached here today from lower California that Fred K. Miller, a veteran of the Philippine war, whose parents reside in Sacramento, killed Pablo Mesa, a Mexican, at Santa Curice, and wounded a Yaqui Indian. The trouble occurred at a Mexican fandango and was the result of Miller's becoming drunk on fiery mescal and running

New Incorporations.

(Special Dispatch to The Journal.)
Salem, Or., May 30.—Articles of incorporation have been filed in the office of the secretary of state as follows:
Mason, Percy & Strickler, Inc.; principal office, Portland; capital stock, \$10,000; incorporators, F. Mason, F. A. Percy and H. P. Strickler.
Electrical Construction & Supply company; principal office, Portland; capital stock, \$20,000; incorporators, Garfield B. Jolley, Leo L. Goodman and H. C. Browne.



Weathered Oak Book Case like cut

Regular \$30.00
Special \$22.50

Terms \$1 Down, 50c Weekly
Strict mission style, four adjustable shelves, made from the finest quartered oak. A beautiful piece for any library and a bargain at the price.

For
Porch or House
An Elegant
Rocker



50c Down
50c Weekly

\$6

Monday we are going to place this high-grade Rocker on sale (as long as they last). It is made from selected hardwood, weathered finish, double cane (equal to rush) seat. Will last a lifetime. Large, massive and substantial. Regular values \$10, special \$6.00
TERMS—50c DOWN, 50c WEEKLY

Here Is
A Chance
To Buy
A Swell,
Massive
Artistic
Rocker
At a
Bargain



Headquarters for Steel Ranges

Portland agents for the celebrated "Laurel" Range.
Portland agents for the high-grade "Quality" Range.
"Venus" Range for coal and wood, complete with warming closet—

\$25.00

COVELL'S FURNITURE CO.

184-186 First St. WE TRUST YOU FOR ANYTHING, ANYTIME