

SOUTH PORTLAND HEIGHTS

Including Green's and Sweeney's Additions in Terwilliger Tract

One of the Grandest Panoramic Views in the Country—of City, Rivers, Valley, Island and Perpetual Snow-Capped Mountains—Ever Presents Itself From This Delightful Property

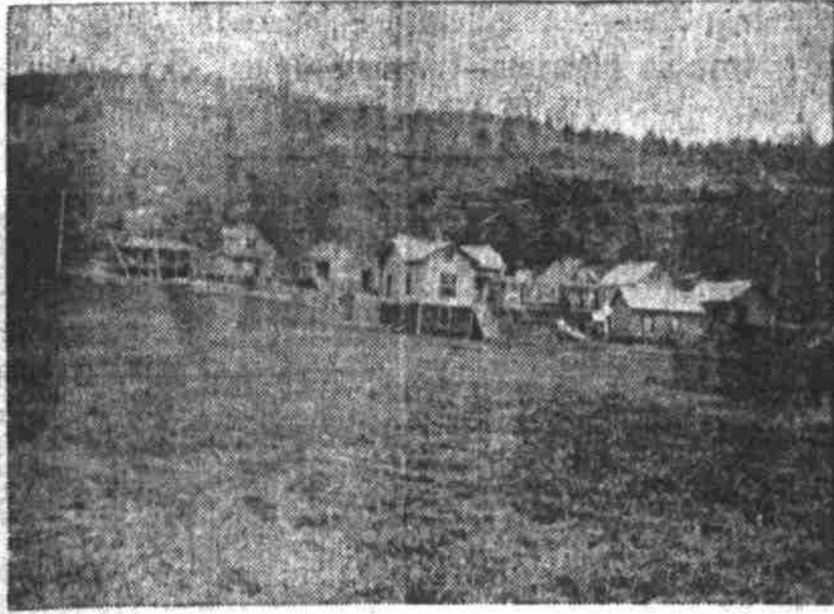
The new Salem line—the Oregon Electric Railway—runs through South Portland Heights, and a depot will soon be built. Nowhere in the city is there more activity in building sites than in South Portland Heights. There is a reason for this. The people are realizing that the southwest portion of the city is the truly beautiful and most convenient section, there being no impediments to traffic, no river or draw-bridges to contend with and to delay them from work, meals, business or amusements.

Those who have never visited SOUTH PORTLAND HEIGHTS have no conception of the NATURAL BEAUTY of the land and of the MATCHLESS SCENERY, which can never be obstructed.

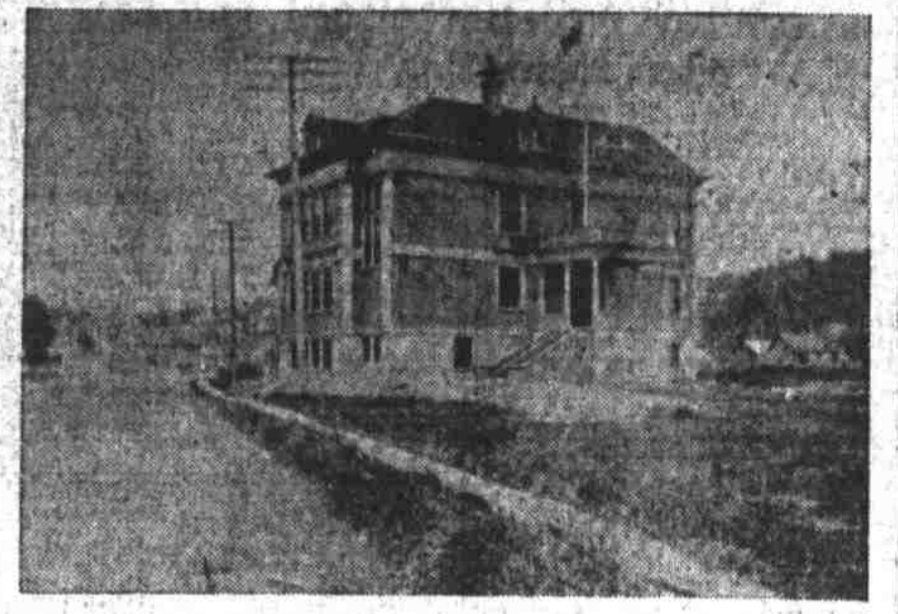
Portland's Ideal Homesite Addition

When South Portland Heights are built up it will be an American VENICE and the rest of the city will be jealous of the favored residents of this PICTURESQUE and SCENIC section overlooking a broad expanse of city, valley, mountain and river that is incomparable.

The future of the beautiful and picturesque part of Portland is now doubly assured, for the Oregon Electric is now running on regular schedule. Also the Fulton line, Southern Pacific Fourth street line and Southern Pacific Oswego line. The United Railways Company is now building on the Macadam Road, and you can go by boat on the Willamette river, tie up at Jones' Mill. With this great number of transportation lines running directly through this part of Portland and all of them through Green and Sweeney's additions, there can be no question for the future value of this section. It was one railroad that made the lots in North Portland raise in value from \$1,000 to \$15,000 each, so why should not these lots go higher than \$500 to \$750, the present prices on installments? One of the prettiest river views to be had in this city is from South Portland Heights. People going through in their automobiles or in carriages on the Slavin road, which runs north and south through this tract, always stop to take in the grand and panoramic view. All the snow mountains—Hood, Adams, St. Helen's—are plainly visible. All the East Side of Portland—Mount Tabor and Mount Scott,—can be seen better from this tract than any other. Aside from the high ground!



SCENE FROM SOUTH PORTLAND HEIGHTS.



SCHOOL—MACADAM ROAD—GREEN'S ADDITION.

250 BEAUTIFUL LOTS, \$525 to \$750

EASY TERMS—SMALL PAYMENT DOWN, SMALL MONTHLY PAYMENTS

Don't Delay—Procrastination Robs Many of the Golden Opportunities of Their Lives

At the rate we are selling lots the choicest will go in a short time, and if you do not secure building sites now, you will be compelled to pay fancy prices in the near future. Remember, this property is on the west side of the river and within walking distance of the business center. It is only 12 MINUTES' RIDE ON THE FULTON CAR AND ONLY 25 MINUTES' WALK FROM THE POSTOFFICE. GO OUT TODAY—TAKE FULTON CAR AT SECOND AND MORRISON STREETS—GET OFF AT JONES STATION.

J. Margulis
AGENT ON THE GROUND
Phone Pacific 1263

L. O. RALSTON, Owner

Office, 90 Seventh St.
American Bank & Trust Co.
Phone M. 154

SOUTH SECTION'S BRIGHT FUTURE

L. O. Ralston Says It Is Because of Railroad Improvements.

My reasons why South Portland and South Portland heights in particular, has a bright future, are in brief:

- 1st. Because the railroads are now connecting South Portland with North Portland. The Southern Pacific cut-off from Willaburg is now building a bridge across the Willamette north of Oswego.
- 2d. The United Railways on Front street lets all its railroads have terminal connections with the north end. You can now see Northern Pacific freight cars standing on switches on Water street south of Jefferson. This of itself should make property as valuable as in the north part of the city.
- 3d. Then South Portland is on very high ground, being 20 feet higher than the Willamette at high water.
- 4th. South Portland has hundreds of thousands of dollars worth of manufacturing enterprises already in operation and has had for years, the only drawback was transportation facilities.
- 5th. The grandest scenic view to be had of all the snow mountains can be seen from South Portland heights. I predict for it a very bright future very shortly.

L. O. RALSTON.

His Specialty Is Heights Lands



H. L. Johnson.

H. L. Johnson has been handling heights property so long that he cannot descend to the lowlands any more. He is Alder Springs manager for the Spanton company. "Southward" is his watchword and he sees in the Oregon electric line a harbinger of expansion in that direction that makes him dogmatic in his belief that the city will simply force itself out through this new channel.

FARMS

ON THE

Oregon Electric Carline

- | | |
|---|--|
| <p>60 ACRES
Improved farm, fronts on the Willamette river, near electric line; stock and implements; take some trade; \$6,300.</p> <p>110 ACRES
All rich, level land; all cultivated; 20 acres hops, good hophouse; small dwelling, well located, Marion county; convenient to boat landing on Willamette river and new electric car line; will take good home in Portland as part pay.</p> <p>72 ACRES
Improved farm, stock and implements, near Wilsonville, Or.; \$5,000.</p> <p>40 ACRES
All cultivated, new house and barn; electric line runs through the land; \$4,000.</p> <p>82 ACRES
Fronts on Tualatin river, near the car line; all fine land; house, barn, orchard, stock, implements and crop; \$5,200.</p> <p>5 ACRES
All cultivated; some nice fruit trees; a beautiful piece of land, at Raleigh station, 6 miles out; \$1,350.</p> <p>18 ACRES
All choice improved land, near Garden Home; \$450 per acre.</p> <p>25 ACRES
Nearly all cultivated, 13 acres set to apples, at Tigardville; \$4,750.</p> <p>5 ACRES
All cultivated, at Tualatin; \$1,150.</p> <p>47 ACRES
Improved farm, with stock, implements, etc.; near Sherwood; \$5,500.</p> <p>5 ACRES
All improved, 4 acres in bearing fruit; house and barn, at Garden Home; \$2,500.</p> <p>21 ACRES
All very choice improved land; house and barn; 7 miles out, near Beaverton; \$5,500.</p> | <p>43 ACRES
Improved farm, running water, good buildings, fine team, some cows, hogs, chickens, crop and implements, near Reedville; \$6,300.</p> <p>10 ACRES
Beautifully located, all fenced, 3 acres cultivated, balance partly cleared; neat, hard-finished cottage, all painted; good barn; fronts on good road, 6 miles out; \$2,500.</p> <p>11 ACRES
All good land, all cultivated; good house and barn; watered by small brook; small orchard, just bearing; fronts on main county road, driving distance to Portland, 1 1/2 miles to railroad station, store, school and church; new electric car line soon to pass the house; terms on part. Snap at \$2,500.</p> <p>80 ACRES
About 20 acres cultivated, 10 acres slashed and in pasture, 7 acres of choice beaverdam, some good timber; 6-room new house, all well finished, carpets on all the floors; new barn, 42x46 feet; 4 chicken-houses, smokehouse, etc.; nice front yard, with over 100 budded tree roses; 2 horses, 4 cows, 3 sets harness, 1 root cutter, 1 buggy, 25 hogs, 15 sheep, 200 chickens, 1 wagon, 1 stump-puller and 200 feet of cable, 1 spray pump, all farm tools; 3 miles to boat landing on Willamette river, 1/2 mile to Salem electric line, 13 1/2 miles to Portland.</p> <p>10 ACRES
All cultivated, a beautiful piece of land, fronts on main highway, 4 acres in bearing orchard, house, barn and out-buildings, close in on Salem electric car line; bargain, \$4,000.</p> <p>10 ACRES
All choice land, 3 acres cultivated, fronts on main highway, near new car line, 7 miles out; \$2,750.</p> <p>10 ACRES
Unimproved, good soil, some good timber, fronts on main highway, near new car line, 7 miles out; \$2,250.</p> <p>15 ACRES
All rich bottom land, nearly all cultivated, in fine condition; house, barn and outbuildings, fronts on main highway and near station on Salem electric car; this side of Tigardville; \$5,500.</p> |
|---|--|

HENKLE & HARRISON
217 Abington Bldg.

Terwilliger Homestead

The Scenic-Addition of South Portland

One Hundred and Fifty Lots in This Tract

NOW OFFERED FOR SALE AT PRICES RANGING FROM

\$400 UP

Served by three electric carlines, eight to ten minutes' ride from the business center; walking distance.

This Is Your Opportunity

To procure a homesite or an investment on the west side, right in the city, with fine view of snow-capped mountains, East Portland and Willamette river. Lots 50x100. Streets 60 and 80 feet wide.

TERMS \$100

Down—balance monthly or quarterly payments; interest 6 per cent.

GO OUT TODAY and look them over. Take any south-bound car on Second or Third street, get off on Corbett, between Seymour and Richardson avenue. Salesman on the ground to show property. For further particulars inquire of

J. C. COSTELLO

PHONE MAIN 3177

331 CHAMBER OF COMMERCE