

FREE

With this Outfit we give absolutely Free a 52 piece English Semi-Porcelain White Dinner Set

\$10.00 CASH \$7.50 MONTHLY

\$10 CASH \$7.50 a Month

Are the EASY TERMS on this THREE-ROOM OUT-FIT—Here's a list of what the outfit comprises; read it carefully and you'll appreciate the importance of this offer. Iron Bed, Spring, Mattress, Dresser, Stand, Chair, Rocker, Room Rug, 1 pr. Lace Curtains, Sideboard, Extension Table, Six Dining Chairs, Room Rug, 1 pr. Lace Curtains, Cooking, Stove, Household Treasure, 2 Kitchen Chairs

Three Room Outfit \$99.35

\$99.35

Brass Beds \$1 Down--\$1 a Week

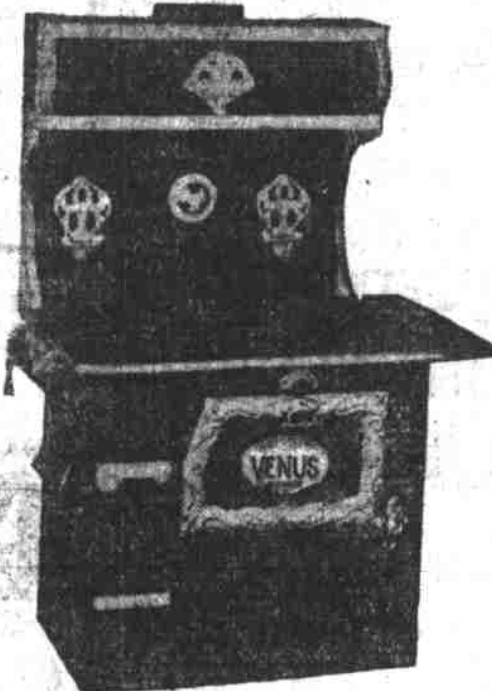
REGULAR \$40.00—The best bargain in a Brass Bed in the city. Beautifully finished; extra strong and massive. Good enough for the home of a millionaire—4 feet 6 inches wide; 2-inch posts; door knob vases; height of head 5 feet 2 inches.

\$32



STEEL RANGES

Double Flue Laurel Ranges—Celebrated Quality Ranges.



A quick baking Range, complete with Warming Closet—for Wood or coal. \$25.00

This Elegant Two-Piece Parlor Suit \$10.75



Two-Piece Parlor Suit, made from solid maple, mahogany finished, covered in fine French velours, verona or tapestries, solid corner, front and back posts, made tabourette style. \$10.75

Look for This Sign:

COVELL'S FURNITURE CO.

184-186 First Street

We Trust You for Anything, Anytime



With every \$25.00 purchase—whether cash or time—this Beautiful Rocker FREE.

ROSE SOCIETY OFFERS PRIZES TO GROWERS

Rules for Amateurs Have Been Changed From Those of Last Year—Judges Selected for the Exhibition Are Well Known Authorities on Roses.

Having selected the judges for the annual exhibition of the society and completed changes in the rules and classes made necessary by experience, the Portland Rose society is practically in readiness for the exhibition at the fair grounds, which should prove one of the most attractive features of the Rose Festival.

An innovation to be made this year by the society is the furnishing of paper boxes of convenient size for the collection and transportation of roses. These will aid materially in the bringing of exhibits to the building and will render the work of the exhibitors much easier.

show, exhibited in any class; best general exhibit (Section A excluded); best exhibit of new roses (not exhibited before 1907); best arranged exhibit (Section A excluded). Open to growers only who have never won a prize—12 blooms distinct varieties; 5 blooms one variety in single vase; 12 bunches garden roses. For Nurserymen. Best general exhibit roses and shrubbery, 1st prize, \$100; second, \$60; 3rd, \$40. Best 48 varieties, each different, 1st prize, \$25; 2nd, \$15; 3rd, \$10. Best 16 varieties, 3 each, 1st prize, \$25; 2nd, \$15; 3rd, \$10. Best 12 bouquets, 1st prize, \$25; 2nd, \$15; 3rd, \$10. Rules for Amateurs. The rules for amateurs are as follows: Roses entered in section A must be exhibited in boxes of regulation size, viz: For six roses, 1 foot 3 inches long by 2 foot 6 inches wide, back 7 inches, front 5 inches high; for 12 roses, 2 feet long by 1 foot 6 inches wide, back 7 inches, front 5 inches high; for 24 roses, 3 feet 6 inches long by 1 foot 6 inches wide, back 7 inches, front 5 inches high. Each exhibit must consist of distinct varieties without added foliage, and the name of each rose must appear on neat cards about 3 inches long by 1 inch wide. Duplicate of any variety in any box will disqualify. All other roses entered for competition may be displayed in boxes, vases or other receptacles, a number of which latter will be provided by Portland Rose society. All roses must have been grown in the open ground, and must be the bonafide property and grown by the exhibitor. The same rose or roses cannot be entered for more than one prize. Any person can have two exhibits in any class, but no one person can take more than one prize in any one class. Exhibits must be in place on the tables not later than 11 a. m. on the day designated. Exhibits as received will be numbered by the committee, according to the respective section, class and number for which they are entered, and the prize will be awarded by number accordingly. The names of the exhibitors shall not appear on the exhibits until after the prizes have been awarded. Every exhibitor shall leave the building at 11 a. m. when the judges shall examine the exhibits and award the prizes, and at 2 p. m. or as soon thereafter as practicable the show will be opened to the public. Any roses improperly classed, named or entered, or which have any added foliage, or which do not conform to the rules and regulations, will be disqualified and ruled out of the contest. When a certain number of roses is designated in any competition, there must be neither more nor less than that number entered or exhibited. The judges may decline to award a prize to any exhibit which they consider unworthy of reward even where said exhibit is the only one in its class or section. Scale of Points for Judging Roses. Exhibited in vases Exhibited in boxes Size ..... 20/Size ..... 20 Color ..... 20/Color ..... 25 Form ..... 20/Form ..... 25 Stem ..... 10/Substance ..... 15 Substance ..... 15/Foliage ..... 15 Foliage ..... 15 Total ..... 100 Total ..... 100 It is understood that persons who enter roses for competition do thereby signify their approval and assent to the foregoing rules and regulations. Twenty Years a Station Master. From Woman's Life. Though in almost every phase of the industrial life of the nation women are to be found competing with the sterner sex in the hurry and bustle of daily existence, Whippingham, a picturesque little Isle of Wight village, is probably unique in having a woman station master. For just 20 years this station has been in the entire charge of Mrs. Merwood, a lady in whom the company has the utmost confidence. A Californian's Luck. "The luckiest day of my life was when I bought a box of Buckler's Arnica Salve," writes Charles F. Budahn, of Tracy, California. "Two 25c boxes cured me of an annoying case of itching piles, which had troubled me for years and that yielded to no other treatment." Sold under guarantee at Skidmore Drug Company's store.

Hay's Hair Health Never Falls to RESTORE GRAY or FADED HAIR to its NATURAL COLOR and BEAUTY No matter how long it has been gray or faded. Promotes a luxuriant growth of healthy hair. Stops its falling out, and positively removes Dandruff. Keeps hair soft and glossy. Refuse all substitutes. 2 1/2 times as much in \$1.00 as 50c size. IS NOT A DYE. Philo Hay Soc. Co., Newark, N. J. \$1 and 50c bottles, at druggists—WOODARD, CLARKE & CO.

YOU DON'T KNOW It takes a professional man to tell whether your headaches, nervousness or dizziness come from your eyes or other causes. The change from bad to worse goes on so slowly that you never attribute it to your eyes. Better come and see me. I will tell you if your vision is defective. J. D. Duback PROFESSIONAL OPTICIAN 173 Fourth St., Y. M. C. A. Bldg.

HIMES SPEAKS FOR UNIVERSITY

Declares Non-Passage of Appropriation Bill Will Injure State.

Eugene, Or., May 15.—Among the ardent supporters of the university appropriation bill is George H. Himes, secretary of the Oregon Historical society. Mr. Himes recently wrote to Professor L. R. Alderman of this city, giving his reasons for supporting the bill. The text of his letter is as follows: "Portland, Or., May 6, 1908.—Professor L. R. Alderman, President University of Oregon Alumni Association, Eugene, Oregon.—Dear Sir: In response to your favor of April 16, in which you ask 'What effect would an adverse vote upon the University of Oregon appropriation bill at the coming election have upon the general welfare of the state?' I have this to say: 'First—As the state university in every commonwealth stands at the head of the public school system of that commonwealth, it is the duty of the citizens thereof to provide the ways and means whereby that institution of learning may be brought to the highest degree of efficiency. 'Second—This being true, it inevitably follows that all acts opposing the necessary equipment of the university tend to prevent the proper development of the subordinate schools, and therefore are highly detrimental to the best interests of the state. 'Third—While it may be conceded that the irreducible school fund of Oregon is not as large as it ought to be owing to the unfortunate management of school lands years ago and consequently not yielding the income necessary to enable the school authorities to reach the high standard desired, it is exceedingly unwise to inflict the penalty upon the most important department of our public school system. It were far better, taking a broad outlook toward the future, to pursue a more liberal policy in support of the University of Oregon, thereby aiding its management to place it upon the high plane to which it is entitled, than to persist in repeating the errors of the past. 'Fourth—In connection with the work of the Oregon Historical society, under my immediate supervision, I meet hundreds of people every month who are visiting the Pacific coast with a view to becoming permanent residents of some locality west of the Rocky moun-

Notes From the Labor World

The Brotherhood of Boilermakers and Iron Shipbuilders of America will meet in annual convention in St. Paul next month. At a meeting of the Ohio Valley Trades and Labor assembly held recently, it was unanimously decided to put a labor ticket in the field. The forty-first annual session of the British Trades Union congress will open in Nottingham September 1. A proposition is being advanced among the retail clerks of San Francisco to build a hall for the use of the several unions of that craft. Milwaukee is preparing to entertain the annual convention of the Commercial Telegraphers' Union of America next month. The San Francisco Labor council has appointed a committee to consider and report upon the best means of overcoming the effects of the recent court decision in injunction cases. The California state convention of the National Association of Stationary Engineers is to be held in Stockton on June 11, 12 and 13, under the auspices

of the Stockton local union of the association. The carpenters' district council of Boston has elected a tripartite committee, which will henceforth bear and carry all jurisdiction and trade matters that arise between the three unions of the council. Chicago is to have a workmen's hospital. It is to be an institution managed cooperatively by the labor unions, in which free treatment and medicine will be given the families of workmen in time of sickness. Plans are being made by the Structural Building Trades Alliance and the Central Labor Union of Spokane to erect a labor temple in that city to cost 75,000. There are 7,900 union men in Spokane, and by 40 per cent of them taking \$25 worth of stock the necessary amount can be raised. According to Mrs. Henrietta L. Goodri, secretary of the Woman's Educational and Industrial Union of Boston, the increase in housework wages during the last five years, as shown by the records of the Domestic Reform League, is as great if not greater than in any other line of work. The shoemakers of Italian birth in Philadelphia have been organizing a society for mutual benefit. The society has been in existence about a month, and has made application for a charter under the laws of Pennsylvania, with the title "Italian Mutual Aid and Beneficial Society of Shoemakers of Philadelphia." The Labor Council of the Women's auxiliaries of Greater New York has for its purpose the starting of a systematic movement by the trades unions to make the union label necessary to employers as a means of selling their goods. It is composed of one representative from each women's auxiliary belonging to a trade union in the greater city and one representative from each trade union having an auxiliary in connection therewith.

David M. Holbrook Tailor \$30 TO \$50 COUCH BLDG 4th & WYOMING ST. WASHINGTON