

# BELLE CREST

the beautiful, among the trees, with its broad avenues, cement sidewalks and magnificent scenic environment; with its ozone-laden air, blooming flowers and gorgeous spring attire; BELLE CREST, Portland's fairest, best and most desirable residence section, invites you to become familiar with its charms. Come

## THIS AFTERNOON

Take the East Ankeny car at Third and Yamhill streets; they leave every ten minutes; settle yourself down for one of the most enjoyable rides in the city. Just say "BELLE CREST" to the conductor. Arriving, do not fail to go over to the Country Club grounds—a three-minute stroll from the carline. Walk into North Belle Crest and pick all the wild flowers you want.

*The Jacobs-Stine Company.*

Largest Subdivision Operators on the Pacific Coast,  
148 FIFTH STREET. PORTLAND, OREGON.

We will mail you a copy of John Roach Straton's \$1,000 prize story of Portland upon receipt of your name and address and this ad.

# METZGER ACRE TRACTS

ONLY 30 MINUTES' RIDE FROM JEFFERSON STREET STATION ON NEW SALEM ELECTRIC LINE

The SUREST, SAFEST and MOST PROFITABLE investment in Oregon is GOOD ACREAGE in a GOOD LOCATION.

When you invest in METZGER ACRE TRACTS you are SURE that your money will DOUBLE itself in a short time. Why? Because these acre tracts are only 30 MINUTES out from Portland on the new SALEM ELECTRIC LINE, which is bound to develop the country tributary to it in a remarkably short time and to DOUBLE acre values in a year.

### MOTHER EARTH THE BASIS OF ALL WEALTH

METZGER ACRE TRACTS are splendidly located and the soil is rich and unsurpassed for FRUIT and VEGETABLES of all kinds; also for WALNUTS. For CHERRIES it is ideal. In a few years you cannot buy a 25-foot lot at METZGER STATION for the present price of a whole ACRE. Do not DELAY securing a tract while the choice is large. Better act QUICKLY and let the other fellow be satisfied with the smaller choice later.

### FIGURE TIME BY DISTANCE

When you are in a HURRY to reach your place of business or your HOME, you do not measure the distance by MILES, but by TIME. It takes only 35 minutes to reach METZGER ACRE TRACTS on the SALEM ELECTRIC LINE. REMEMBER—It takes LONGER than this to reach many city suburbs where 50-FOOT LOTS cost as much as a whole METZGER ACRE TRACT—THINK IT OVER.

Acre Tracts \$200 Up 10 Per Cent Down 3 Per Cent Monthly Discount for Cash

**CAUTION**  
Insist on agents showing PRINTED PLANS of METZGER ACRES. If they want to direct you to something just as good, BEWARE. Our tracts are on the side of railway where METZGER STATION stands.

Printed Plans Now Ready

**HERMAN METZGER**  
226-28 Front Street PORTLAND, ORE.

NOTICE THE OREGON ELECTRIC RAILWAYS NEW TIME CARD—ALL TRAINS STOP AT METZGER STATION.

## WASHINGTON IS FULL OF SKATES

But They Are Not Dangerous, Being of the Innocent Roller Variety.

Washington, May 2.—Washington has more skates to the square mile than any other city in the union. There is no call for opponents of the liquor traffic to view this statement with alarm. It merely means that the capital's long stretches of almost perfect asphalt pavements afford an ideal surface for roller skating and that people take advantage of the fact.

In Washington roller skating is as much a business as it is a pleasure. A stranger is surprised by the number of persons who flit about on rollers. Three times a day the city presents a spectacle recalling the palmy periods of the bicycle craze, when, morning, noon and night, the streets of every city, town and village were jammed with wheels. People skate to and from business in Washington. So general has become the habit that the traction companies complain of a falling off in revenue.

In Pennsylvania avenue, between the treasury and the capitol, the skaters cut-number automobiles and horse-drawn vehicles two to one. One might expect to see children in a majority, but the reverse is true. More grown-ups skate in Washington.

**In Training.**  
From the Cleveland Plain Dealer.  
"What does all that snowing and growing mean, Johnny?"  
"I was thinkin' about the umpire, sir."

No time to write ads today, busy writing deeds to

### WALNUT PARK

Property.

W. M. KILLINGSWORTH

323 Chamber of Commerce.

P.S.—Could not improve on last Sunday's ad.

## DUKE IN EXILE FOR HIS DEBTS

Moneylenders Cause Dismissal of Cousin of Germany's Crown Princess.

Berlin, May 2.—The young Duke Heinrich of Mecklenburg-Schwerin, a cousin of the crown princess, has just been

dismissed from his regiment because of the hopeless state of his debts. He became the victim of money-lenders, and to save an open scandal he has been obliged to abandon his military career and go into exile.

The duke, who is only 25, foolishly tried to get rid of his debts by complicated dealings with money-lenders, who naturally fastened upon him like vultures. They got him to put his name to numerous documents, which only made his case more desperate. Even then he did not get a tithe of the money he negotiated for. The "financiers" handing him various lots of useless goods in lieu of cash. In one instance it was a stock of children's coffins, and in another a string of ancient and worthless horses, upon which he had to realize on the best terms he could.

Incompetence in financial matters seems to be hereditary in the young man's family. For his father, Duke Paul Friedrich, was two years ago placed

under guardianship by orders of the head of the house, the Grand Duke Friedrich Franz IV, because of his enormous debts.

**New Incorporations.**  
(Special Dispatch to The Journal.)  
Salem, Or., May 2.—Articles of incorporation have been filed in the office

of the secretary of state as follows:  
Lester Hydraulic Ram & Irrigation company, principal office, Portland, Oregon; capital stock, \$100,000; incorporators, J. E. Lester, Charles Stout and G. A. Johnson.

Grants Pass Irrigation & Power company; principal office, Grants Pass, Oregon; capital stock, \$25,000; incor-

porators, S. J. Harmeling Jr., J. G. Riggs and J. E. Riley.

T. S. Townsend Creamery company; principal office, Portland, Oregon; capital stock, \$40,000; incorporators, T. S. Townsend, A. A. Underhill and D. A. McIntyre.

ital stock, \$50,000; incorporators, E. M. Runyan, A. L. Vonzio and J. C. Yeager.

**Always Grinding.**  
From the Chicago News.  
A man has an ax to grind or a man turns the grindstone for some woman who has.

Be Your Own Banker and Deposit Your Money Where It Will Double Annually

## RAILWAY ADDITION MONTAVILLA

AFFORDS YOU THIS OPPORTUNITY

Commencing Saturday, May 2

All Reserved Blocks will be Open for Sale at the following prices:

CORNER LOTS, EACH \$100  
INSIDE LOTS, EACH - \$ 85

TERMS:

\$10 Down and \$5 Monthly

Telephone Bonds, Savings Accounts Accepted at Full Valuation. Title Guaranteed. Perfect Double-Track Streetcar Service. 25-Minute Ride. 5-Cent Fare. Immediate Possession. Grammar school, stores, with every convenience close at hand. Seeing is believing, so come out tomorrow and see this tract.

Agents at Tract All Week, Including Sunday.

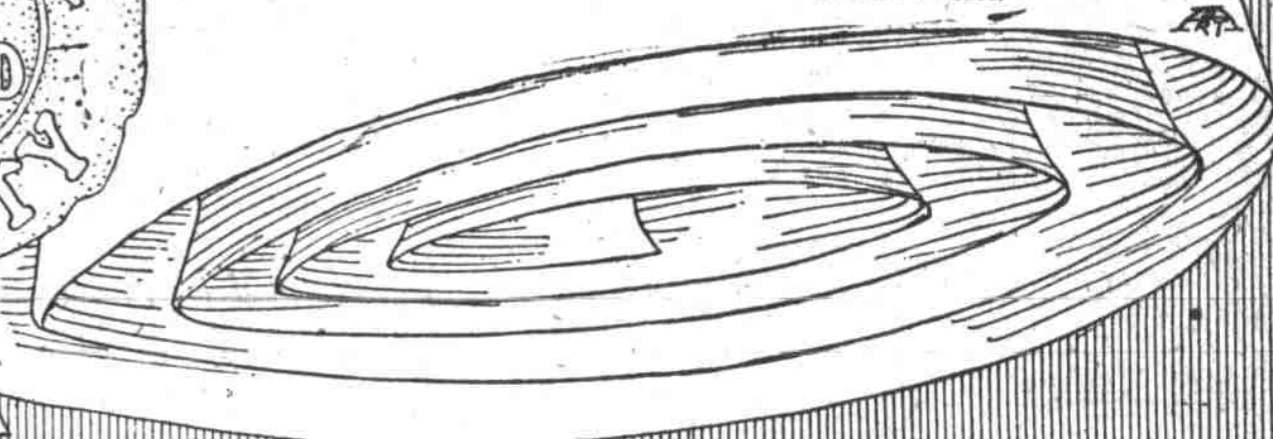
I Want You to Be the Judge

Take Montavilla car at corner Third and Morrison streets; get off at corner Villa and Hibbard streets, Montavilla branch office; for further particulars call office.

**C. P. WELLS**

321 WORCESTER BUILDING.

PHONE M. 3253.



BANDON-BY-THE-SEA

BANDON-BY-THE-SEA

BANDON-BY-THE-SEA

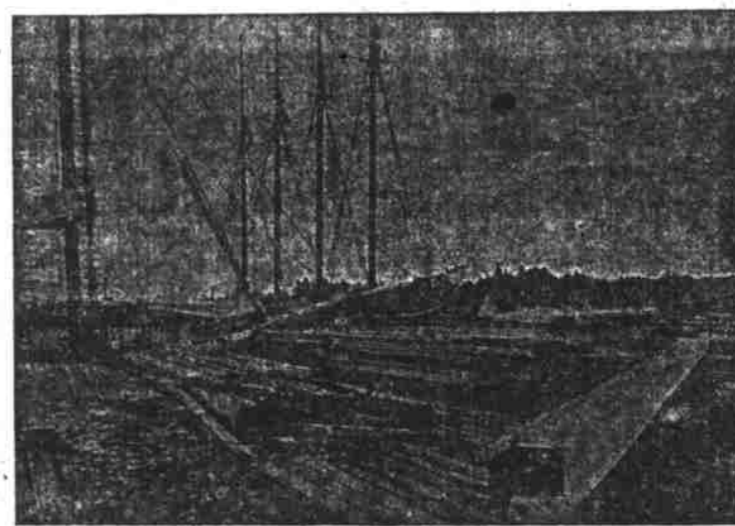
# An Investment For Your Children

You want to start your boys and girls just right. You want them to have a home, a business or to have employment of the right kind. Perhaps you seek these opportunities yourself.

In no other Coast city is there a greater demand for the man who will work. The commercial field, the lumber camps, the farms, the dairies, the mines, the professions, are open and await the man of progress, of large or small capital. There is money for you and your children in Bandon-by-the-Sea, if you invest now.

## The City of Bandon

Is the outlet to the sea of the fertile Coquille Valley, an "Empire in itself." It is overflowing with natural resources awaiting capital and labor to enrich the fortunate ones who will take advantage of the limitless opportunities offered to you today.



## Sweeney's First Add. to Bandon

Opens the door to the most ideal home sites and the most conservative investment on the Coast. Pure, sparkling water is piped to the property. The lay of the entire addition is perfect and healthful. The most opportune location for a rapid increase in value. These lots are 40x100 feet, with ten-foot alleys and wide streets.

# THE EASIEST TERMS EVER OFFERED

WRITE AT ONCE FOR BOOKLET.

# "Bandon-by-the-Sea"

Address THE WARREN PUBLICITY CO., Suite 405 Buchanan Building, Portland, Oregon

COUNTRY AGENTS WANTED. WRITE FOR PARTICULARS.

BANDON-BY-THE-SEA

BANDON-BY-THE-SEA

BANDON-BY-THE-SEA