

CEMENT BLOCK MANUFACTURERS

A ST. JOHNS' INDUSTRY

We Make All Kinds of Concrete Building Blocks, Sewer Tiles, Porch Piers, Porch Columns, Chimney Blocks Cap and Sill Blocks, Cornices and Ornamental Work

Contracts taken for Houses, Walks, Curbs, Reinforced Concrete, Concrete Blocks, Cement Fences, Foundations, Retaining Walls, etc., etc. We will build houses to suit. We have built four concrete houses—one for Mr. Sloan, Piedmont (see cut); one for Mr. Dolbow at Arbor Lodge; one for Mr. Wothrow at Rose City Park, and an office building on Jersey street, St. Johns, and would appreciate your close inspection of any or all of these buildings.

CONCRETE CONSTRUCTION

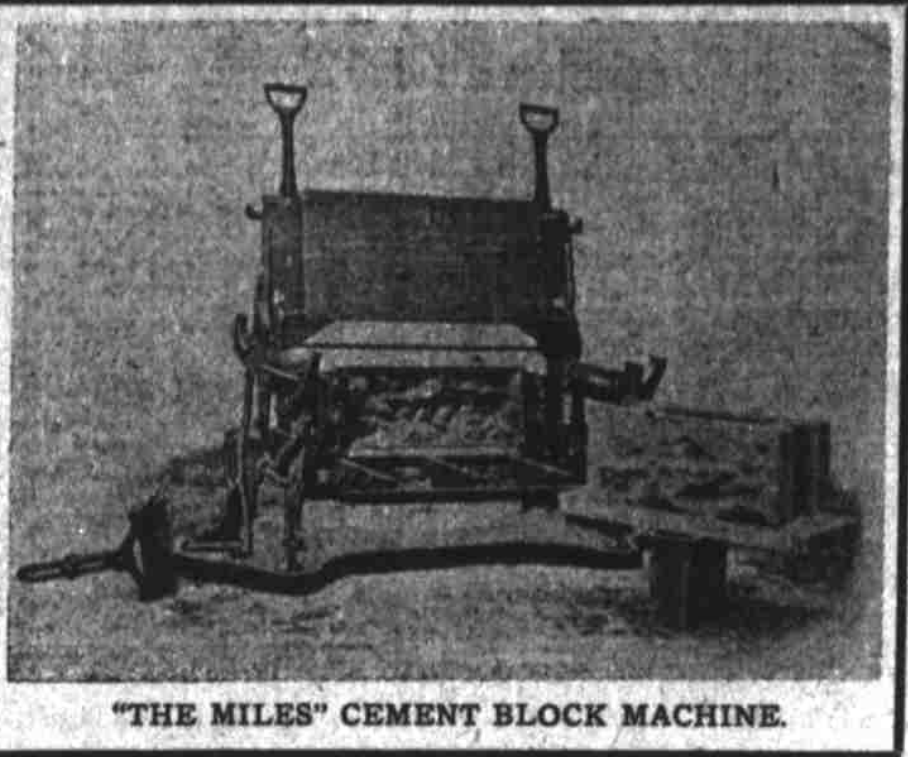
Is more durable than brick or stone and is much cheaper. It is absolutely fireproof, waterproof and vermin proof (cement basements and floors bar mice and rats for all time). Cement blocks embody all the good features of the best qualities of brick and stone of the highest cost, and although adding to these many other merits and advantages, it possesses all the virtues of cheapness—the cost of production being much less.

The demand for cement buildings is enormous, proving that this modern construction will be the prevailing material for houses, stores, factories, office buildings, etc., in the future. All sand and gravel are used for backs, and one half sand and one half cement for the face of the block.

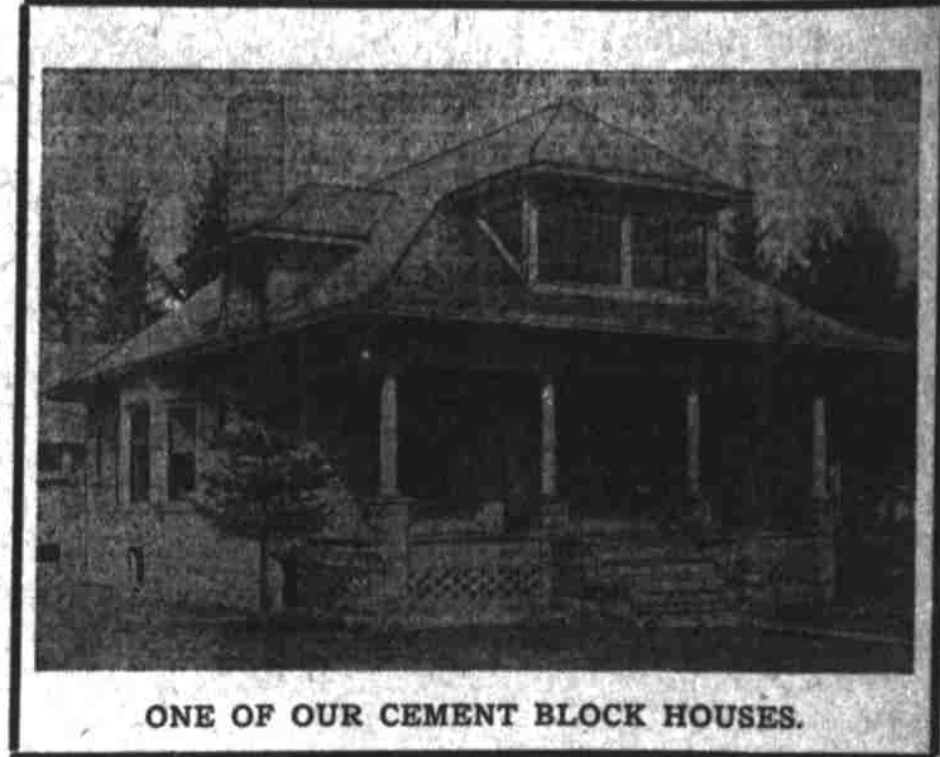
We have three machines now working and can fill all orders promptly.

ESTIMATES CHEERFULLY FURNISHED

We Are Sole Agents for Oregon for
"THE MILES" Cement Block Machine



"THE MILES" CEMENT BLOCK MACHINE.



ONE OF OUR CEMENT BLOCK HOUSES.

"The Miles" is a "face down" machine. There are 14 "Miles" Machines in operation in Bay City, Mich., a city of 27,000, where this machine is best known. THERE IS A REASON FOR THIS. "THE MILES" Machine makes all size blocks from 4 inches to 24 inches on one-size pallet, and all blocks are made face down for either HOLLOW, SOLID, VENEER or TWO-PIECE WALLS. Blocks are made waterproof and when made right are guaranteed as near waterproof as anything ever produced. The many superior merits of "The Miles" Machine place it in a class above all others. We invite all cement block manufacturers to inspect "The Miles," now in operation in our factory in St. Johns. The advantages of "The Miles" will appeal to economical manufacturers. **Orders Taken for CEMENT BRICKS, FINE MANTEL and CHIMNEY and FACING BRICKS**

PHONE
RICHMOND
641

MASON & URBAN

CEMENT BLOCK MANUFACTURERS — ST. JOHNS

PHONE
RICHMOND
641

EAST ST. JOHNS AT MAEGLY JUNCTION

THE HEART OF THE GREAT PENINSULA DISTRICT

AT THE JUNCTION

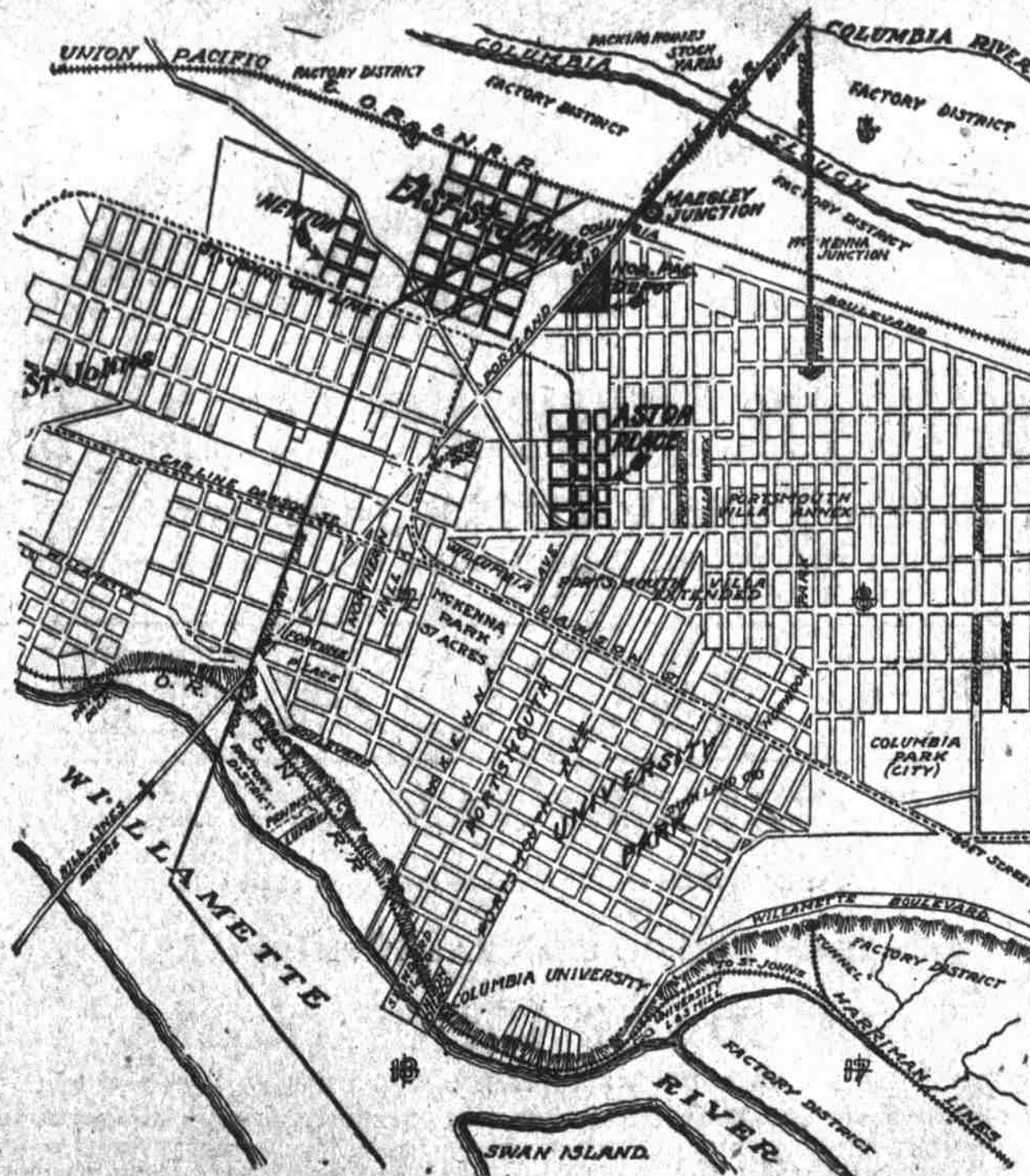
Of the St. Johns carline and Columbia Boulevard—the Great Thoroughfare of the Peninsula—which adjoins

MAEGLY JUNCTION

Where the Hill railroads intersect the HARRIMAN SYSTEM, at which point the freight and passenger depots will be located and where the great transportation development of the entire Peninsula district must center. SURROUNDED ON ALL SIDES BY THE BIGGEST INDUSTRIAL ENTERPRISES in the Northwest, such as the GREAT SWIFT PACKING PLANT, THE WEYERHAEUSER LUMBER COMPANY, THE PENINSULA LUMBER COMPANY, THE PORTLAND DRY-DOCK and the numerous industries along the Willamette River and the O. R. & N. Company lines.

Can any sane person question the tremendous development of this district? If so, they shut their eyes to the most obvious of facts and conditions.

REMEMBER that three years ago lots in St. Johns which cannot now be bought for \$10,000 were selling at \$400 and \$500.



THE SAME HISTORY

Will be told of this section within two years. I have left some choice lots and manufacturing sites in this vicinity.

PRICES

\$350 and upwards for 50x100 foot lots with 16 foot alley.

Easy Monthly Terms

I invite a personal visit to my office where I will take pleasure in showing the property. Will be glad to have you investigate whether you buy or not.

TAKE ST. JOHNS CAR, GET OFF AT SMITH'S CROSSING (EAST ST. JOHNS) AT COLUMBIA BOULEVARD AND YOU ARE THERE. CAR FARE 5 CENTS.

PENINSULA PROPERTY
ONLY

R. G. BRAND

PHONE RICHMOND 601.

PENINSULA PROPERTY
ONLY