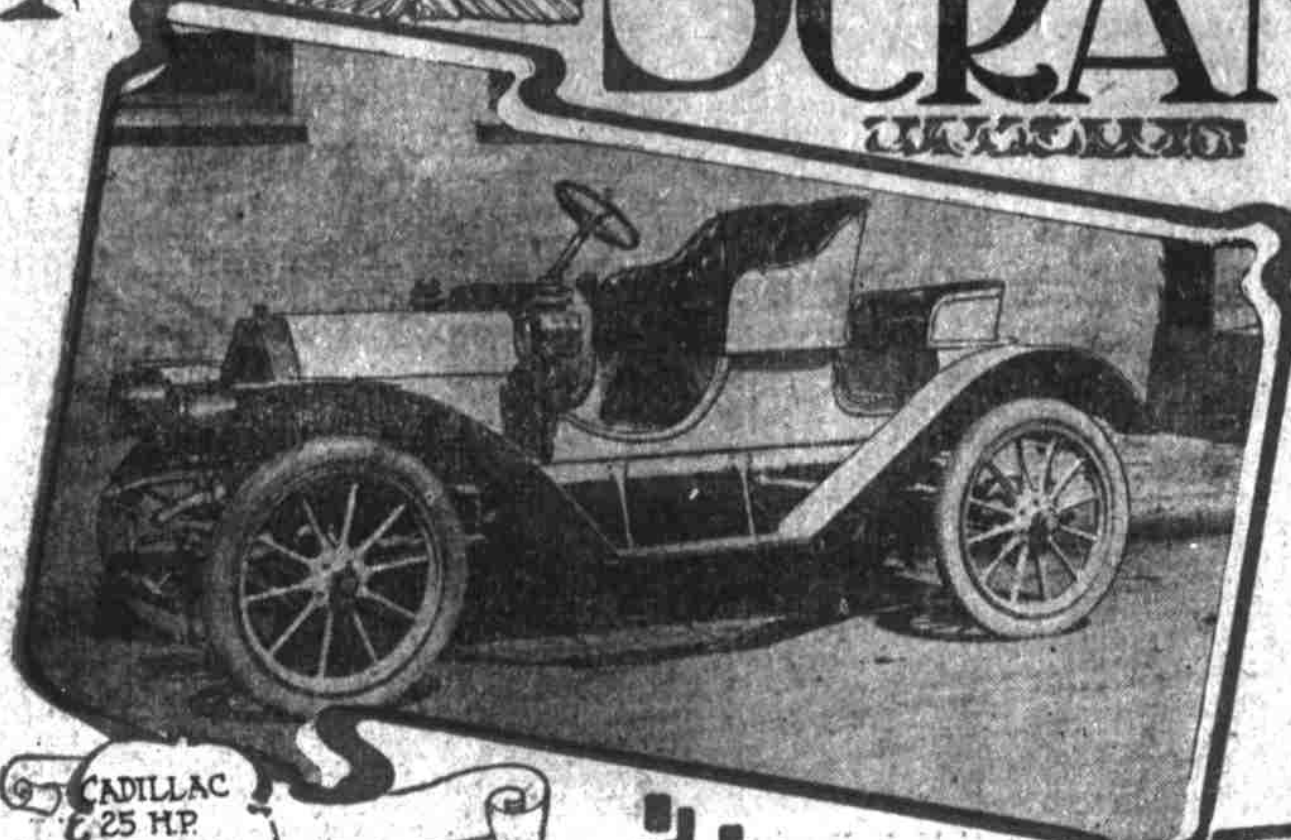


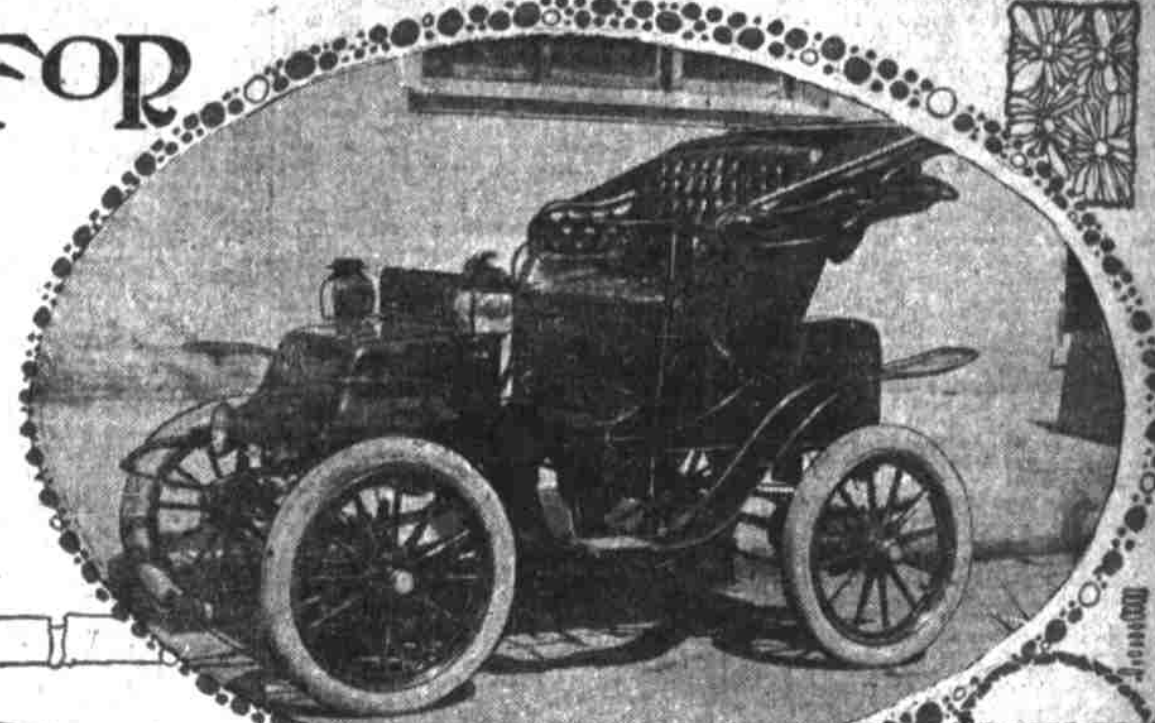
PORTLAND, OREGON, SUNDAY MORNING, APRIL 19, 1908.

ALL PORTLAND SCRAMBLING FOR AUTOS

DEMAND FOR MACHINES NEVER SO HEAVY AS NOW



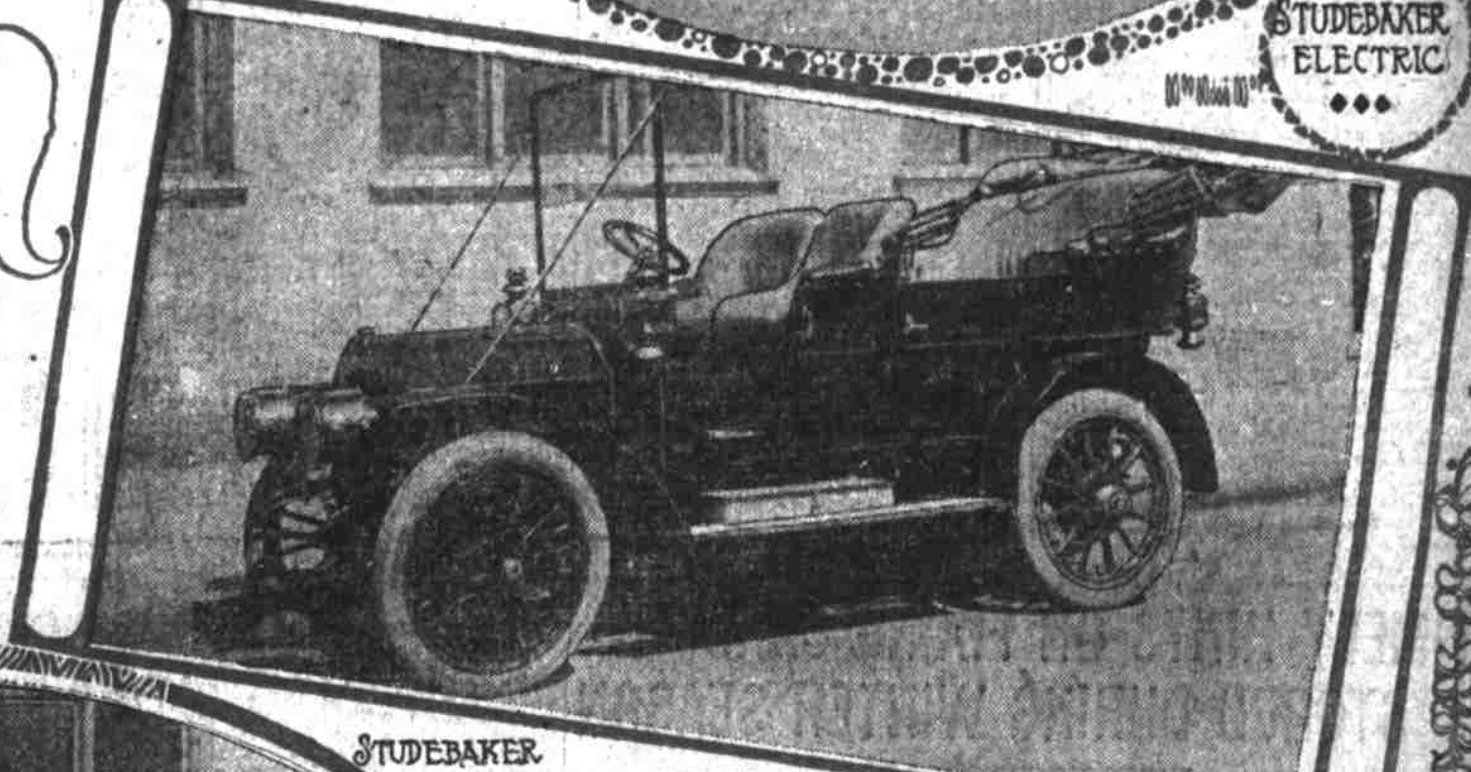
CADILLAC 25 H.P. 4 CYLINDER ROADSTER



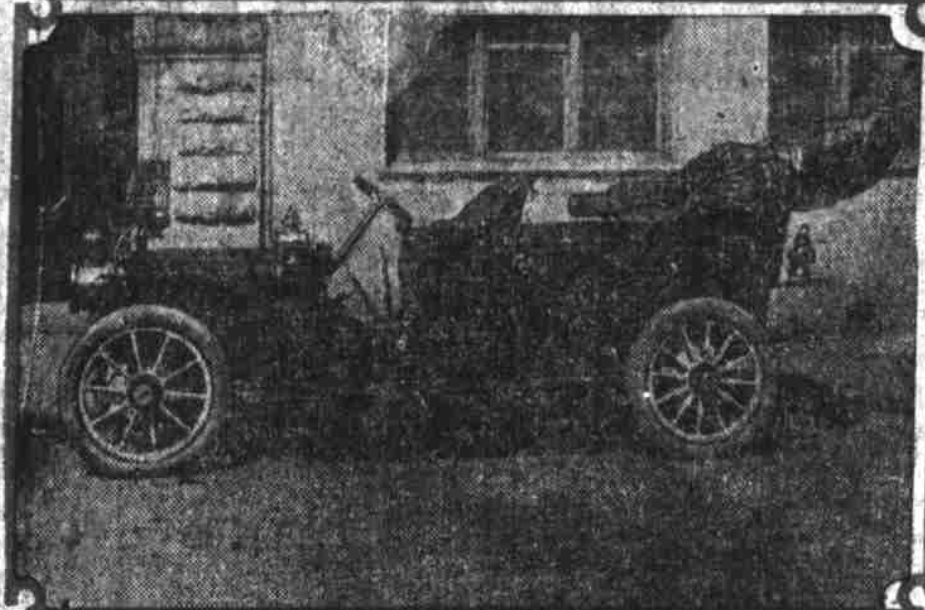
STUDEBAKER ELECTRIC



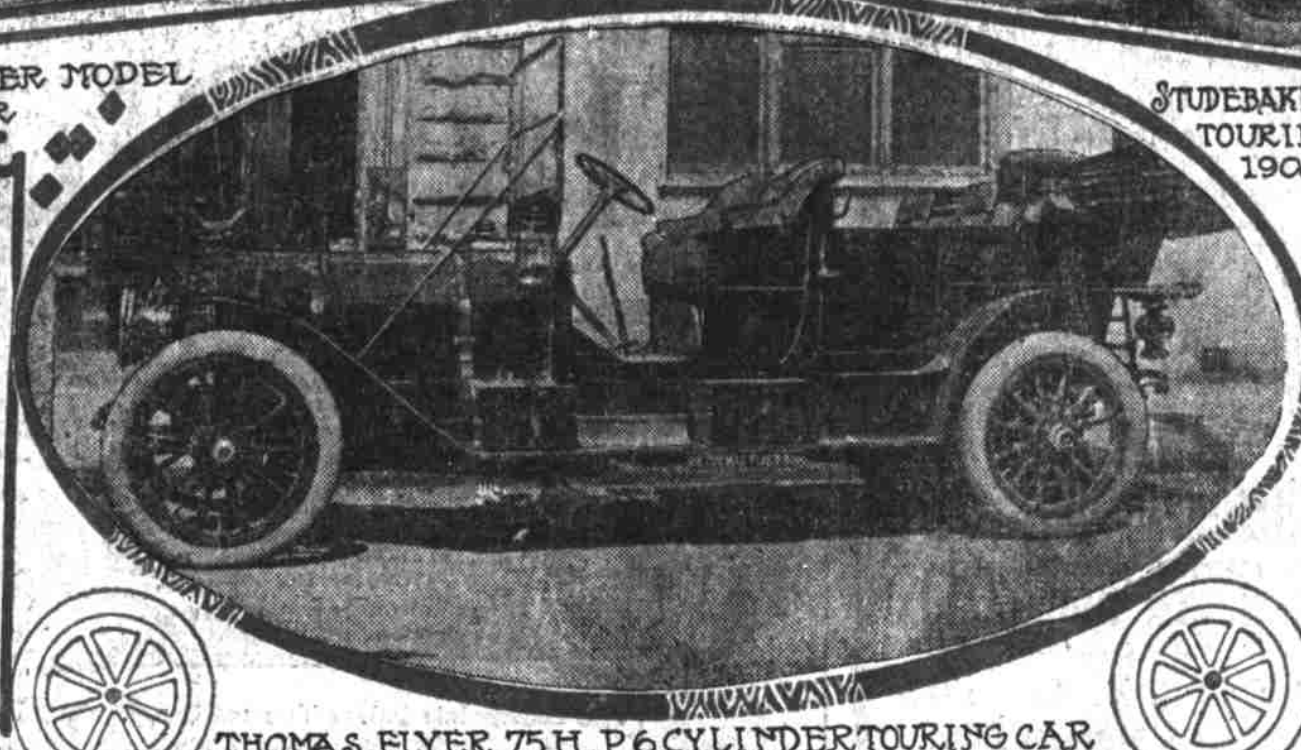
PREMIER MODEL 45 H.P. 6 CYLINDER



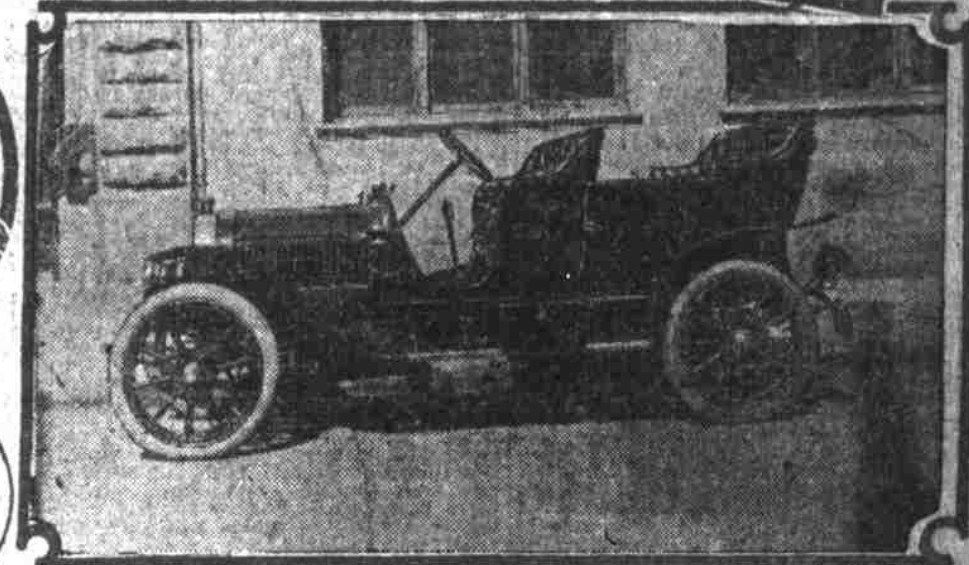
STUDEBAKER TOURING CAR MODEL A 1908 30 H.P.



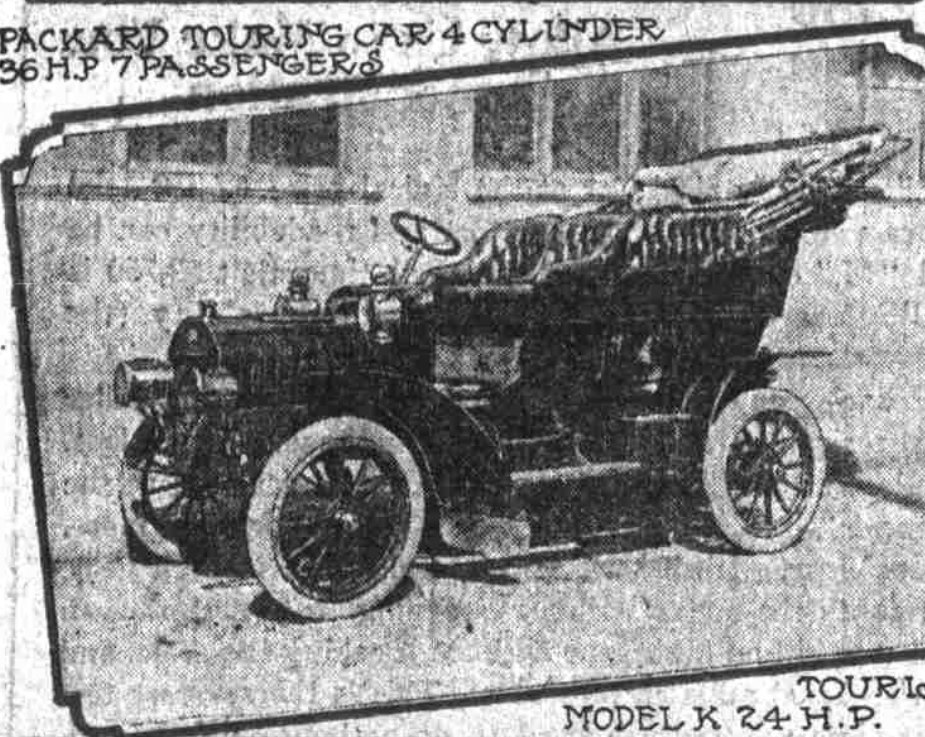
PACKARD TOURING CAR 4 CYLINDER 36 H.P. 7 PASSENGER



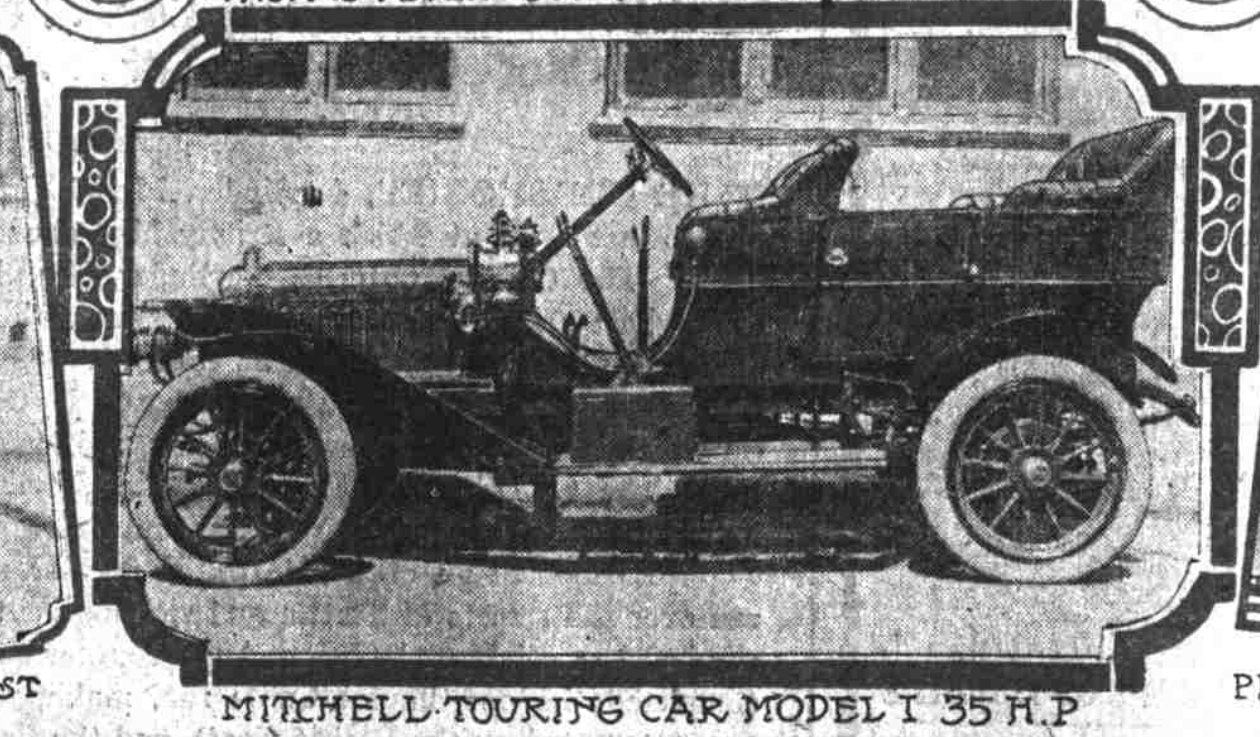
THOMAS FLYER 75 H.P. 6 CYLINDER TOURING CAR



POPE HARTFORD 30 H.P. 4 CYLINDER 5 PASSENGER TOURING CAR



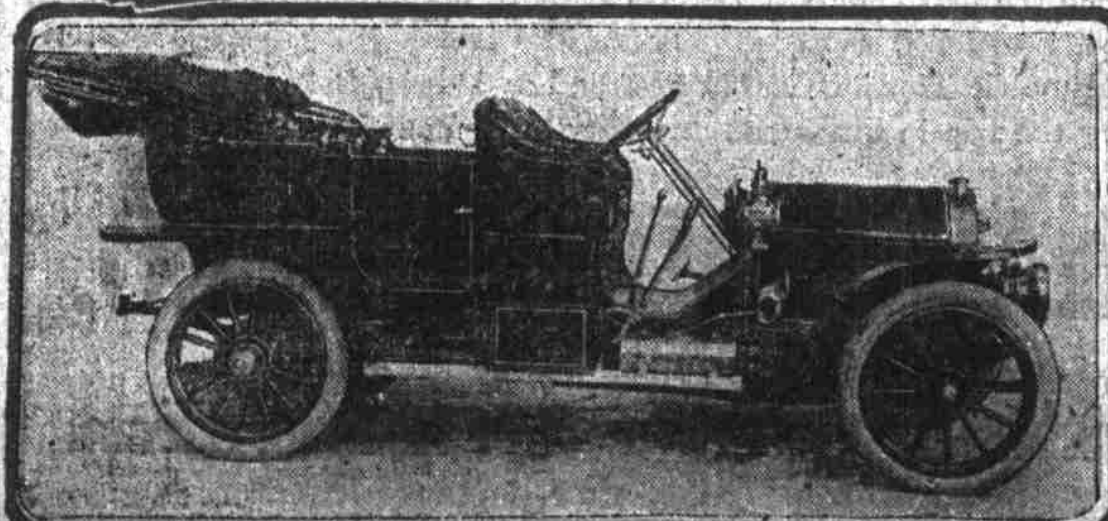
TOURIST MODEL K 24 H.P.



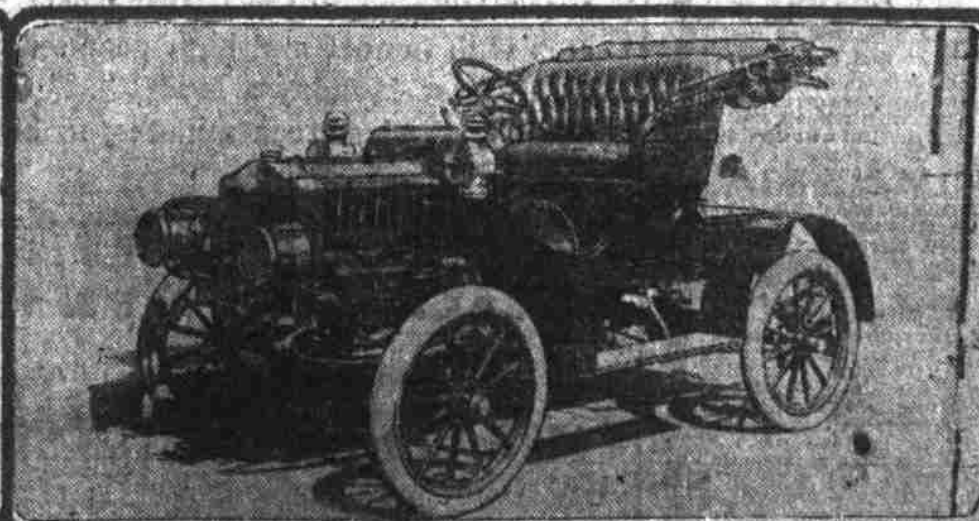
MITCHELL TOURING CAR MODEL I 35 H.P.



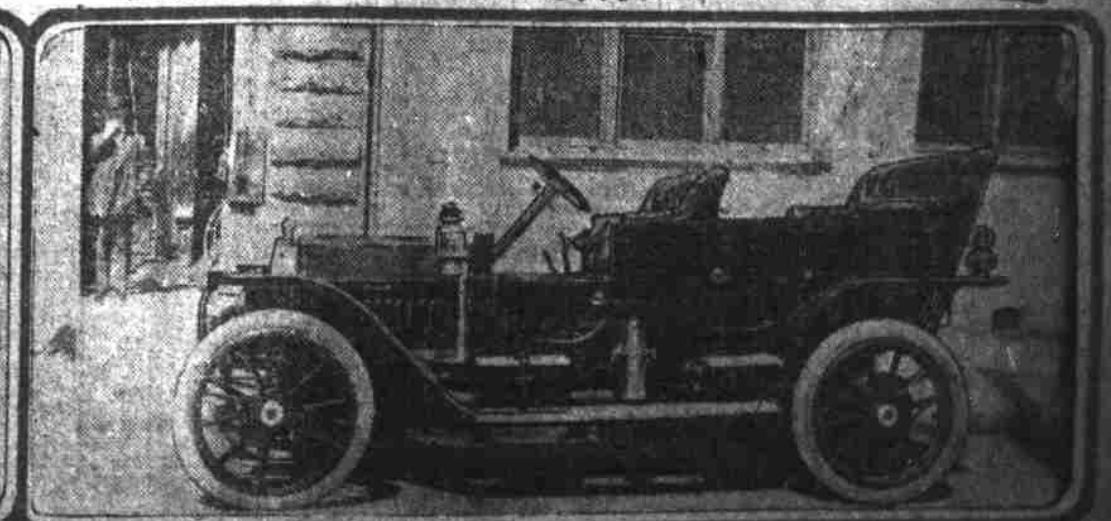
PIERCE GREAT ARROW 6 CYLINDER 40 H.P.



STODDARD-DAYTON MODEL 8 F 45 H.P. TOURING CAR



MAXWELL RUNABOUT MODEL C 14 H.P.



OLDSMOBILE MODEL M 4 CYLINDER 36 H.P. TOURING CAR