

The Hamburg - American Steamers Are Rechartered for Portland-Oriental Line.

TO CARRY CARGO OF FIR TO LONDON

Portland Exporting Firm Charters the British Bark Kelburn. COMES IN BALLAST FROM WEST COAST

Schooner J. H. Lunsmann Loses Charter to Carry Lumber From This Port to Yokohama—The Schooner Churchill Coming Here.

The large British bark Kelburn will be bowling along towards Portland in a few days under charter to carry a full cargo of choice Oregon yellow fir to London. She is to arrive in the Columbia river by May 1 to begin receiving cargo. She is now at Metlitz on the west coast of South America.

The L. P. Lee Lumber company engaged the vessel during the week after having sold the cargo which will consist of 1,600,000 feet of selected lumber and of the highest grade. Part of it will be furnished by the Tongue Point Lumber company near Astoria, and the balance by the Clark & Wilson Lumber company's mills at Linton.

The Kelburn registers 1,400 tons net and is one of the largest barks sailing the seas. She carried a cargo of coal from Newcastle, N. S. W., to the South American port, a small mining camp in the wall of the Andes, and has been lying idle there a few weeks after having discharged the cargo with the usual difficulty experienced in most of the small west coast ports.

The American schooner Churchill is also reported as coming here to load lumber for a foreign destination. She is now at Keelung, Formosa, having recently delivered a cargo of lumber there. The Churchill is one of the best known schooners in the offshore trade on this coast and has taken several cargoes from this port and from mills along the Columbia river.

Another sailing vessel due to arrive here soon to carry away lumber is the Russian bark Albyn which was chartered by the Pacific Export Lumber company some time ago to load for South Africa. The Albyn is supposed to be here in time to begin loading April 1.

It was announced yesterday that the American schooner J. H. Lunsmann has lost her charter to carry lumber to Yokohama for the Pacific Export Lumber company, and the material intended for her will be sent on some other vessel probably on regular liners plying out of here. The Lunsmann reached San Francisco a few days ago many weeks overdue. The charter was cancelled owing to the late arrival of the vessel, the charterers fearing she would probably not show up at all in view of the stormy weather that made things disagreeable to shipping this winter on the Pacific.

TWO SAIL; TWO ARRIVE.

French Grain Carriers Trade Places in the Harbor.

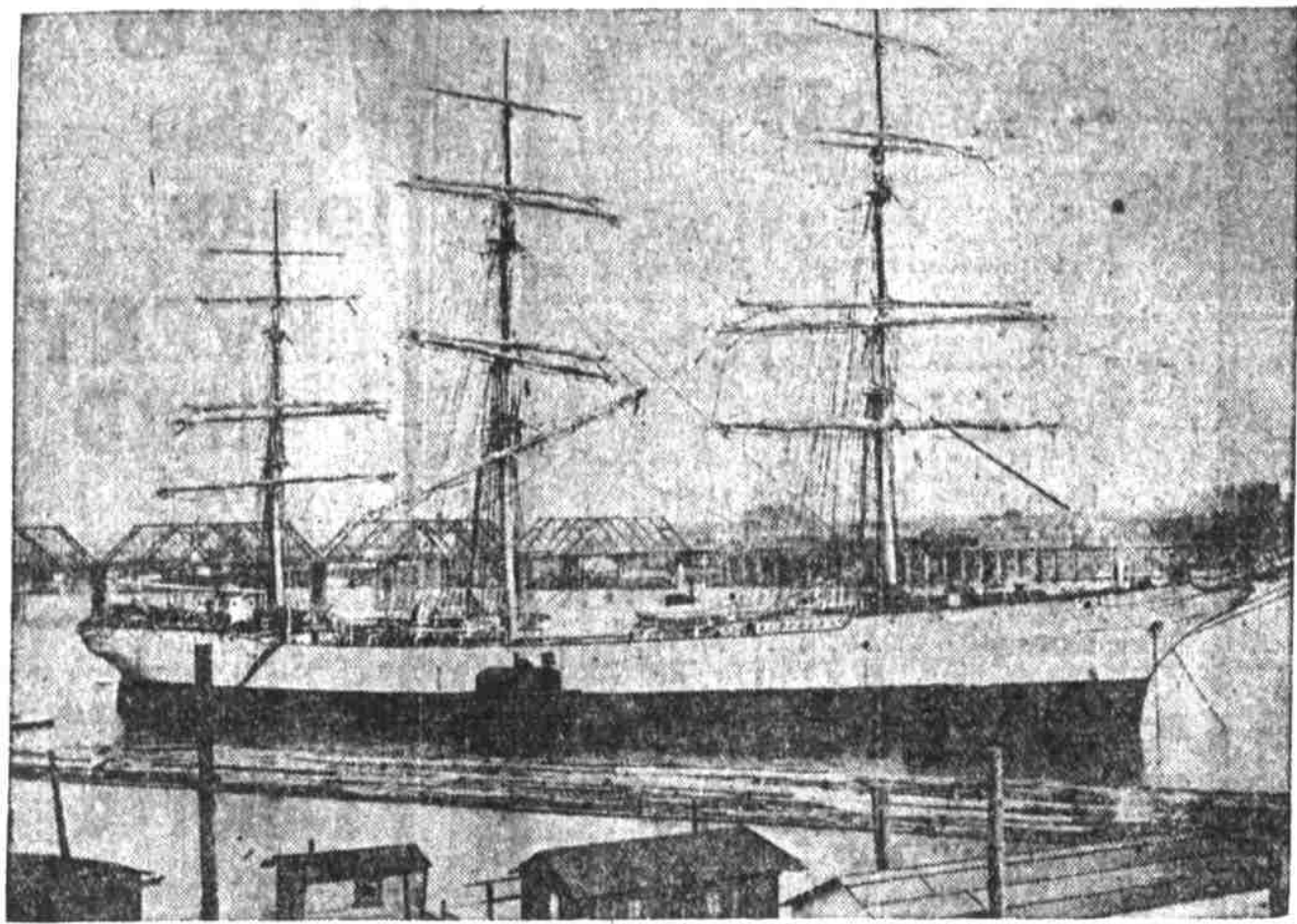
The French bark Emile Galline cleared yesterday for the United Kingdom, with 95,917 bushels wheat, valued at \$86,225. The vessel was towed down to an anchorage off St. Johns last night, and will leave down the river Monday morning in tow of the Ocklahoma.

The captain of the Emile Galline was fortunate in losing only one of his crew while here. He signed a man to take the place of the deserter last night a few minutes before the craft started down the river.

The French bark Pierre Loti will leave down the river this morning in tow of the steamer Harvest Queen. She,

MARINE NEWS

FRENCH SHIP HOEHOE UNDER CHARTER TO CARRY WHEAT TO EUROPE.



Picture Shows the Vessel at the Foot of Mill Street Discharging Ballast on Barges.

There are comparatively few French ships rigged windjammers, the majority being four masted barks. During the season only three or four ships have been included in the long list of French grain carriers dispatched from this port, and of them the Hoeho, now discharging

to, is wheat laden and bound for Europe. Two French barks, the Marechal Davout and the Moller, arrived up yesterday afternoon in tow of the steamer Harvest Queen, and dropped anchor in the stream. They are in ballast and under charter to Keer, Gifford & Co. to carry wheat to Europe.

WITH THE WINDJAMMERS.

Four Wait for Outward Business With Poor Prospects.

The British ship Verena and the German ship Verena, arrived down at harbor this afternoon under charter to load wheat for Europe. The vessels are in ballast.

There are four disengaged vessels in the river at present with little hope of being able to get anywhere near the freights obtained by vessels fixed earlier in the season. The disengaged quartet consist of the Leyland Bros., Largimore, Brodick Castle and Crown of India.

MARINE NOTES

Astoria, March 7.—Condition of bar at 5 p. m., smooth, wind northwest 16 miles, weather clear. Arrived down at 4 a. m., steamer Senator for San Francisco. Arrived down at 8:15 a. m., French bark Bourbonville. Arrived at 11 a. m., schooner M. Turner from San Francisco. Left up at 12:30 p. m., German ship Verena and earlier in the season. The disengaged quartet consist of the Leyland Bros., Largimore, Brodick Castle and Crown of India.

Hongkong, March 7.—Arrived March 6, German steamer Arabia, from Portland. Panama, March 7.—Arrived February 17 British steamer Minerva, from Portland.

Tides at Astoria Sunday—High Water—4.46 a. m., 8.3 feet; 6.44 p. m., 6.5 feet. Low Water—11:36 a. m., 0.8 feet; 11:30 p. m., 3.1 feet.

H.-A. STEAMERS ANOTHER SEASON

Harriman Rechartered Popular Vessels for the Oriental Service. MANAGER SCHWERIN DIRECTS DOCK WORK

Seeks Means Whereby Handling of Cargo Might Be Brought Down to the Best Possible System—Nunantia to Sail Next Sunday.

Manager R. P. Schwerin of the Harriman water lines, announced yesterday that the Hamburg-American liners now plying between this port and the orient have been rechartered for another year, commencing from the first of May next and the subsequent monthly departures of the four liners.

The Hamburg-American line has been handling the business for the Harriman system very satisfactorily, so it is understood, in view of the fact that the contract has been renewed several times since first entered into half a dozen years ago. Prior to the handling of the business was a rule secured with the expiration of each charter party.

The liner Nunantia, which is now being loaded for the general overhauling at Alaska dock. She will take about 50,000 barrels this trip and the larger portion of it will go to Vladivostok, Siberia. Manager Schwerin, who has been here a week superintending the discharging and loading of the system's liners, spent yesterday in the Alaska dock looking after the handling of the freight. At times he would direct a truck and wheel it around showing how it could be handled to the best advantage, and the next moment would watch slings of freight rise from the depths of the holds where long contracts were working with the precision of clockwork.

Manager Schwerin will remain here until the work of loading the Nunantia is well under way in order that he might see for himself where improvements in the service might be brought about.

The Nunantia brought a light freight this time and it is intended to have her loaded and ready for the sea in a week from today. She will go out with a capacity cargo.

ALONG THE WATERFRONT.

The steamer Alliance is on the dry-dock receiving general overhauling. She will leave for Coos Bay next Thursday.

The steamer T. J. Potter is covering the Hiscas on the Pacific. The Astoria run while the latter is being repaired. The port cylinder was put out of commission Friday when the steamer was coming up from Astoria.

The British steamer Gryffvald will finish loading wheat for Hongkong next Wednesday. She is being dispatched by Balfour, Guthrie & Co.

Theodore Knudsen yesterday was awarded the contract to repair the British bark Stream. His bid was \$1,878. The vessel is at Oceanic dock ready to begin loading wheat.

Consolidated Steamship line's two sailings belonging to the French bark Jules Gomme to their homes in France. They were sick and unable to continue the voyage. Their names are Francois Mace and Alexander Pillard.

The oil tank steamer Annapolis, Captain Bridgett, arrived in the harbor last night with a cargo of oil from San Francisco. She dropped anchor in the stream overnight, but will drop down to the Portsmouth tanks some time during the day.

Harbormaster Speyer had his launch hauled out yesterday on the ways for a general overhauling. The hull will be scraped and painted, a necessary operation since it got covered with oil drifting about in the harbor.

Word was received here yesterday that some of the cargo on the British steamer Bessie Dollar had been damaged on the way to Japan from Portland. The steamer left here February 10 and reached her destination a couple of days ago. The cargo consisted of flour, wheat, lumber and pling.

Tomorrow and Tuesday will positively be the last days for discount on west side gas bills. Portland Gas company.

HEAVY TRAFFIC ON UPPER RIVER

Steamboats Rapidly Multiplying in White Bluffs Country. CRAFT OPERATING FILLED TO GUARDS

Several New Boats Will Be Placed in Commission During the Coming Summer and Old Boats Have Been Leased for Season.

(Special Dispatch to The Journal.) White Bluffs, Wash., March 7.—Where one steamboat was employed about one third of the time a year ago supplying the White Bluffs country there will be six in operation this summer. The increase is indicative of the enormous development of the early fruit belt of the Columbia river valley between Kennewick and Priest Rapids.

During the past seven months two steamers, the Mountain Gem and the W. R. Todd, have been swamped with business and a great deal of freight has been handled overland from North Yakima and other points, as the boats were unable to handle all that was offered.

Four new steamers are to be added to the fleet of the up-river district. One of these is the Yakima, one of the fastest and heaviest steamboats on the Columbia and Snake river waters. She is being built by the Puget Sound Shipbuilding company at Everett, Wash. The other three are the Snake, handling freight for the railway construction camps, but will be loaded and repaired at an early date.

The St. Paul, a heavy tugboat, one of the Milwaukee Packet company on the upper Columbia, has been leased by the Puget Sound Shipbuilding company, operating the Mountain Gem, and she will be brought to this port to alternate with the Gem, both to work in conjunction in handling the freight and passenger business of that line between Kennewick and Priest Rapids.

The Puget Sound Shipbuilding company, operating the Mountain Gem, and she will be brought to this port to alternate with the Gem, both to work in conjunction in handling the freight and passenger business of that line between Kennewick and Priest Rapids.

The Puget Sound Shipbuilding company, operating the Mountain Gem, and she will be brought to this port to alternate with the Gem, both to work in conjunction in handling the freight and passenger business of that line between Kennewick and Priest Rapids.

The Puget Sound Shipbuilding company, operating the Mountain Gem, and she will be brought to this port to alternate with the Gem, both to work in conjunction in handling the freight and passenger business of that line between Kennewick and Priest Rapids.

The Puget Sound Shipbuilding company, operating the Mountain Gem, and she will be brought to this port to alternate with the Gem, both to work in conjunction in handling the freight and passenger business of that line between Kennewick and Priest Rapids.

The Puget Sound Shipbuilding company, operating the Mountain Gem, and she will be brought to this port to alternate with the Gem, both to work in conjunction in handling the freight and passenger business of that line between Kennewick and Priest Rapids.

The Puget Sound Shipbuilding company, operating the Mountain Gem, and she will be brought to this port to alternate with the Gem, both to work in conjunction in handling the freight and passenger business of that line between Kennewick and Priest Rapids.

The Puget Sound Shipbuilding company, operating the Mountain Gem, and she will be brought to this port to alternate with the Gem, both to work in conjunction in handling the freight and passenger business of that line between Kennewick and Priest Rapids.

The Puget Sound Shipbuilding company, operating the Mountain Gem, and she will be brought to this port to alternate with the Gem, both to work in conjunction in handling the freight and passenger business of that line between Kennewick and Priest Rapids.

The Puget Sound Shipbuilding company, operating the Mountain Gem, and she will be brought to this port to alternate with the Gem, both to work in conjunction in handling the freight and passenger business of that line between Kennewick and Priest Rapids.

The Puget Sound Shipbuilding company, operating the Mountain Gem, and she will be brought to this port to alternate with the Gem, both to work in conjunction in handling the freight and passenger business of that line between Kennewick and Priest Rapids.

The Puget Sound Shipbuilding company, operating the Mountain Gem, and she will be brought to this port to alternate with the Gem, both to work in conjunction in handling the freight and passenger business of that line between Kennewick and Priest Rapids.

The Puget Sound Shipbuilding company, operating the Mountain Gem, and she will be brought to this port to alternate with the Gem, both to work in conjunction in handling the freight and passenger business of that line between Kennewick and Priest Rapids.

The Puget Sound Shipbuilding company, operating the Mountain Gem, and she will be brought to this port to alternate with the Gem, both to work in conjunction in handling the freight and passenger business of that line between Kennewick and Priest Rapids.

Large Windjammer Is Engaged to Carry Cargo of Yellow Fir to London.

TILLAMOOK GETS JUSTICE AT LAST

Will Have Direct Communication Every Week With Portland.

ONE BOAT STARTS; OTHERS TO FOLLOW

Steamer Sue H. Elmoro Leaves Oak Street Dock Next Tuesday on First Voyage as Regular Liner Between Portland and Tillamook.

The steamer Sue H. Elmoro arrived at Oak street dock last night from Astoria. She is booked to leave for Tillamook next Tuesday and thereby inaugurate a weekly schedule between Portland and that prosperous section. The steamer has been plying between Astoria and Tillamook for several years, but the Pacific Navigation company has come to the conclusion that shippers can do better with the craft operating out of Portland.

The Elmoro service last fall was not satisfactory to the people of Tillamook bay and they started agitation for an opposition line to operate between Portland and the bay. From Bay City comes the report that while the owners of the Elmoro indicate improving the service, there is still room for another line and merchants are at work in the interest of the opposition line.

Add More Vessels. The plan which a number of merchants of Bay City and Tillamook have indicated is to place the gasoline schooner Anvil in commission between Portland and the bay and to add more craft of the same type whenever the growth of the trade so demands. The signers to the agreement have pledged their patronage for a period of two years.

The Anvil has a keel of 127 feet and when loaded will displace 250 tons. She can accommodate 60 night passengers and can carry 250 day passengers, and 300 tons of freight. Her speed is 12 miles an hour.

It is also rumored at Bay City that the Pacific Navigation company will put its gasoline schooner Anvil on the Astoria-Tillamook bay run, in addition to the Elmoro, the former to handle way point passengers and freight traffic. The Elmoro will run direct from Portland to Tillamook City.

Regular Liners Due to Arrive. Breakwater, Coos bay, March 8. Hanuel, San Francisco, March 10. Rose City, San Francisco, March 10. Roanoke, San Pedro and way, March 10. Sue H. Elmoro, Tillamook, March 15. Alliance, Coos bay, March 15. G. W. Elder, San Pedro, March 17. Senator, San Francisco, March 17. Arabia, orient, April 1. Nicomedia, orient, April 1. Alesia, orient, April 1. Nunantia, orient, July 1.

Regular Liners to Depart. Sue H. Elmoro, Tillamook, March 10. Breakwater, San Francisco, March 11. Hanuel, San Pedro and way, March 12. Rose City, San Francisco, March 12. Alliance, Coos bay, March 15. Nunantia, orient, March 15. Arabia, orient, April 1. Geo. W. Elder, San Pedro, March 17. Senator, San Francisco, March 17. Nicomedia, orient, April 1. Alesia, orient, April 1.

Vessels in Port. St. Nicholas, Am. sh., Astoria. Berlin, Am. sh., Astoria. Noble, Am. sh., Astoria. John A. Campbell, Am. sch., Astoria. Emile Galline, Fr. bk., Astoria. Jordanhill, Br. sh., Linton. Admiral de Cornulier, Fr. bk. Col. No. 2. Crown of Germany, Fr. sh., Irving. Alice Marie, Fr. bk., Astoria. Andre Theodore, Fr. bk., Stream. Jules Gomme, Fr. bk., Greenwick. Tricolor, Nor. sh., Astoria. Hoche, Fr. bk., Astoria. Colonna, Nor. bk., Astoria. Colonna, Nor. bk., Astoria. Broderick, Fr. bk., Astoria. Alice MacDonald, Am. sch., Astoria. W. F. Jewett, Am. sch., Astoria. Largimore, Fr. bk., Astoria. Edvard Defall, Fr. bk., Astoria. Sommerstad, Nor. sh., Linton. Washington, Am. sh., Linton. F. S. Loop, Am. sch., Astoria. Strathblaine, Br. sh., Astoria. Marechal Davout, Fr. bk., Stream. Moller, Fr. bk., Stream. Nereus, Ger. bk., Astoria. Nunantia, Fr. sh., Alaska street. Crown of India, Fr. bk., Stream. Sue H. Elmoro, Fr. bk., Astoria. Verena, Br. bk., On way up. Annapolis, Am. sh., Stream. Leyland Bros., Br. sh., Astoria. M. Turney, Am. sch., Astoria.

En Route to Load Lumber. Echo, Am. bktn., Callao. Albyn, Rus. sh., Callao. A. M. Campbell, Am. sch., Redondo. St. Helens, Am. sh., San Francisco. Northland, Am. sh., San Francisco. King Cyrus, Am. sch., Redondo. Melville Dollar, Am. sh., San Francisco. Irene, Am. sch., Redondo. Travell, Am. sh., San Francisco. Albert Meyer, Am. sch., San Francisco. Churchill, Am. sch., Keelung. Kelburn, Br. bk., Mojiliones.

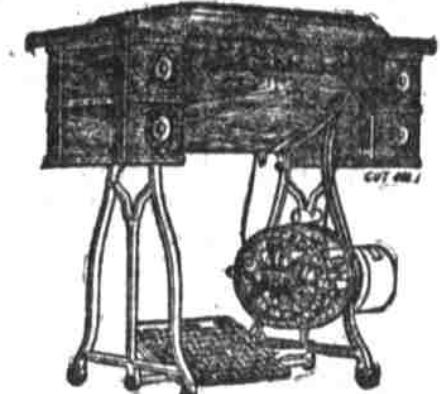
En Route with Cement and General. Eugene Regaigne, Fr. bk., Antwerp. Ernest Leguire, Fr. bk., Antwerp. Ernest Leguire, Fr. bk., Antwerp. Abezoyle, Br. sh., Antwerp. Edmund Rostad, Fr. bk., London. Emanuel Accome, It. bk., Hamburg. Asgerd, Br. sh., Antwerp. Eldard, Fr. bk., Antwerp. Strathgill, British sh., San Francisco. Egan Graham, Br. sh., Cardiff. Eugene Faurel, Fr. bk., Antwerp. Vincennes, Br. sh., Antwerp. Gael, Fr. bk., London.

Coal Ships En Route. Anacost, Br. sh., Newcastle. A. Mindoro, Am. sch., Newcastle. N. S. W. Agnes Oswald, Br. sh., Newcastle. A. tisturne, Br. sh., Newcastle, A.

En Route in Ballast to Load Grain. Celtic Chief, Br. sh., Honolulu. Alterkamp, Ger. sh., Calata Colosa. Clan Buchanan, Br. sh., Santa Rosa. Charles Gounod, Br. bk., San Francisco. Cambusdon, Br. sh., Calata Calosa. E. G. Dunmore, Br. sh., Santa Rosa. Bonchamp, Fr. bk., San Francisco. Celliburn, Br. bk., Santa Rosa. River Falloch, Br. sh., Talcahuano. Jacobsen, Fr. bk., San Francisco. Dynamone, Br. sh., San Francisco. Manx King, Br. sh., Taltra. Grand, Nor. bk., San Francisco. Port Crawford, Br. sh., Callao. Howard D. Troop, Br. bk., San Pedro.

Oil Steamers En Route. Geo. Loomis, Am. sh., San Francisco. Catalina, Am. sh., San Francisco.

Foot power required to run a sewing machine is little to be sure, but it is enough to give the average woman a backache



With an Electric Motor to drive the machine undivided attention can be given to sewing. The result is better work—more of it—and no backache. The cost of operation averages less than one cent an hour.

An Electric Motor can be attached to any standard machine and operated from any electric light socket.

WE WANT TO TALK WITH YOU ABOUT ELECTRIC MOTORS

On sale at Company's Supply Department, 147-149 Seventh St.

CALL PHONE MAIN 6688, A5517, FOR INFORMATION

Portland Railway, Light & Power Company

BRANCH OFFICES: 609 Main St. OREGON CITY, OR. 604 Portland Boulevard, ST. JOHNS, OR. S. W. cor. State and Commercial Sts., SALEM, OR. 606 Main St., VANCOUVER, WASH.

SAVE MONEY! AVOID PAIN!

TEETH EXTRACTED FREE! WHEN PLATES OR BRIDGES ARE ORDERED

FINE TEETH \$5.00 FINE TEETH \$5.00

WHY PAY MORE? Lady Attendant FULL SET, THAT FIT \$5.00 Ten Year Written Guarantee GOLD CROWNS, 22-K \$3.50 BRIDGE TEETH, 22K \$3.50 GOLD FILLINGS \$1.00 SILVER FILLINGS 50¢

We keep busy doing good work at these prices. We have the latest, most modern Electrical Apparatus for doing painless dental work.

ELECTRO DENTAL PARLORS 303 1/2 Washington Street, Corner Fifth Opposite Olds, Wortman & King's

COLUMBIA LIFE & TRUST COMPANY

OUR NEW POLICIES OFFER ALL THAT IS BEST IN LIFE CONTRACTS EITHER TO BUY OR SELL. Low Non-Participating Rates High Cash Values

SUPERIOR INDUCEMENTS OFFER ED TO RELIABLE ACTIVE AGENTS Apply to JESSE B. SHARP, Manager of Agents, 214 Lumber Exchange Bldg., Newcaste, A.

COAL Creek COAL

None Better to Be Had at Any Price RANGE OR FURNACE \$7.00 Per Ton NO SOOT NO DIRT

Special Price to Suburban Districts F. B. JONES & CO. East 7 181 EAST WATER ST. B-1771

The Journal Library Voting Coupon

THIS COUPON IS GOOD FOR 5 VOTES IN THE JOURNAL LIBRARY CONTEST

Cut out the coupon, fill in name of organization or society you wish to vote for and deposit in the ballot box at

HOLZMAN'S JEWELRY STORE, 149 Third St. WHITE FRONT DRUG STORE, 133 Grand Ave. WATTS-MATTHIEU DRUG STORE, 275 Russell St.

Name of Organization..... Name of Voter..... Address.....

Old or new subscribers to the Daily and Sunday Journal, paying in advance, will be entitled under this offer to special votes as follows: One year (\$7.50), 750 votes; six months (\$3.75), 300 votes; three months (\$1.95), 125 votes; one month (65c), 40 votes.

LIBRARY VOTING CONTEST

A \$500 library given away absolutely free. An elegant library of 300 volumes and handsome golden oak cases will be given to the lodge, school, church, club or society in Portland securing the largest number of votes. Every merchant listed below will give with each 10-cent purchase one vote. At the close of the contest the lodge, school, church, club or society receiving the largest number of votes will be awarded the library complete, with cases. Current accounts when promptly paid are entitled to votes. The library is on exhibition in the Fifth street window of The Journal office, corner Fifth and Yamhill streets. Ballot boxes are located at Holzman's jewelry store, 149 Third street; White Front drug store, 133 Grand avenue; Watts-Matthieu drug store, 275 Russell street, where all votes should be deposited. Trade with the following merchants and get busy with the votes:

- W. H. MARRELL & CO., dry goods, clothing and shoes, 389 to 384 East Morrison street. F. HOLZMAN, jeweler, 149 Third street, Main 3156. O. H. HOFFMEYER, photographer, 165 1/2 Third street, Pacific 1726. KADDERLY TRANSFER & STORAGE CO., office and warehouse 111-113 North Sixth street. Main 1865, A-1868. THE S. H. BRAINARD CO., sporting goods, 225 Grand avenue. East 238. LIBBETT COAL & ICE CO., office 275 Pine street. Home A-3136, Main 3522. VULCAN COAL CO., office 323 Burnside street. Main 2776, A-2774. BUSCH & OSTER, merchant tailors, 323 Stark street. Pacific 509. OREGON NEWS CO., cigars and news, 147 Sixth street. W. H. LEFF, plumbing and gas fitting, 507 Williams avenue. East 4235. WHITE FRONT DRUG STORE, 133 Grand avenue. W. A. WILBERT, grocer, 128 Grand avenue. B-1281, East 282. THE MODEL HATTER SHOP, finest shop in the city, 91 Sixth street.

MASSONIC TEMPLE GROCERY, 380 Yamhill, corner Park. Main 5621, A-3737. CHICAGO MARKET, meats, 187 Third street. Main 412. THE ROYAL DYING & CLEANING, 188 Fourth street. THE REILLY CLEANING & DYEING, 643 1/2 Washington street. A-5703, Main 5455. ROBERTSON ELECTRICAL CO., 291 East Morrison street. East 3128, B-1625. WATTS-MATTHIEU CO., druggists, 275 Russell street. East 662. SHAW & PAYNE, wood dealers, 147 East Eighth and Main streets. East 315.

ALICE RIEBER, fine millinery, 409 Washington street. DR. E. H. WRIGHT, dentist, 342 1/2 Washington street. CENTRAL MARKET, meats and fish, 130 Grand avenue. B-1386, East 412.

Tomorrow and Tuesday will positively be the last days for discount on west side gas bills. Portland Gas company.