

NO LACK OF DEMAND FOR HOMES AND BUSINESS SITES

INSIST ON GULCH FILL

East Side Business Clubs Are Determined to Force Through Work of Leveling Stephens Slough—Fight Lumber Company.

Considerable indignation has been aroused among property owners all over the east side, as well as those immediately affected, because of the attempts the Inman-Poulsen Lumber company has made to hold up the improvement of East Sixth street across Stephens slough. The federated east side clubs Tuesday evening adopted resolutions condemning the action of the lumber company and pledging support to the Brooklyn people in their fight against the company.

When the matter comes up for consideration at the next council meeting a delegation from the United East Side clubs will be present to ask the council to allow the work on the fill to go ahead at once. The Inman-Poulsen company have had an ordinance introduced rescinding that part of the contract which requires the company to make the fill ending them at 15th. Councilman Rushlight, explained the whole matter at length to the delegates Tuesday.

When the property-owners petitioned for the improvement of East Sixth street, including the whole thoroughfare from East Oak street south to Howarth it was with the understanding that this fill across the gulch on the property of the lumber company was to be made. At the time no remonstrance was filed and the contract for the fill was let to the Pacific Bridge company. Files were drawn and the false structure erected for filling the street. Then Inman & Poulsen suddenly adopted vigorous measures to block the improvement.

The directors of the Pacific Bridge company were prevailed upon to take their men off the fill work. Mr. Inman went to the city authorities and so far he has been successful in stopping the progress of the street improvement across the fill.

"These property-owners," said Mr. Rushlight, "have gone to considerable expense to improve East Sixth street. It has been completed now except this fill. cement sidewalks have been put in and in one place there was a cut made from eight to ten feet deep. Now when they are about to realize benefits from the improvement this corporation is able to hold up the whole proceeding."

"Furthermore, it is a most unjustifiable move, because the Inman-Poulsen concern is the heaviest user of these streets. Our engineer tells us that the grand avenue bridge has been repaired in the last time and that it will not be such a longer because of the heavy traffic from the mill. When that bridge falls down that section of the city will be completely cut off, and the Inman-Poulsen company refuses to build a new way."

Bad Mess All Around. "Again, when they first saw that they were going to be assessed for this improvement they made a proposition to make this property to the city for about eight blocks of valuable land."

OUR MOTTO: TO SELL SO YOU CAN SELL OR SAVE.

E. L. Cooper & Co.
The Leading East Side Merchants

Wholesale and Retail Dealers in Hay, Grain, Mill Feed, etc. Owning and operating

The Largest and Most Up-to-Date Feed Establishment of its kind on the coast.

We solicit dealers' trade. You can get anything you want at any time, delivered promptly, by calling us up. Special prices to customers close in.

124 - 126 - 128 - 130 UNION AVENUE

Both Phones, East 1517, 2-1517.

NOTICE TO EAST SIDE PEOPLE

We Sell Meat Cheaper Than West Side Markets Sell It

NATIONAL MARKET

Cor. Grand Ave. & E. Burnside St. Phone. East 42 B 2242.

THESE PRICES FOR CASH ONLY

- Good Boiling Beef, lb. 4¢
- Good Beef Stew, lb. 4¢
- Choice Corn Beef, lb. 5¢, 7¢
- Good Steak, 3 lbs. 25¢
- Prime Rib Roast Beef, lb. 10¢, 12½¢
- Choice Leg Pork, lb. 13¢

All Other Meats Accordingly

TRY US—You Can't Make Money Faster—TRY US

They then said this land where the fill is was valuable, while now they assert that the assessment of \$2,000 would completely confiscate this same valuable property that they wanted to hand the city for some waterfront streets. It was said that all around and the federated clubs should see that the council does not rescind the contract. A proposal was offered the council asking them to please to make this trade of vacated streets for the property offered by Inman-Poulsen, as it was the sense of the clubs that the lumber concern was planning to hand the city a huge lemon. This action was taken in addition to the former resolution condemning the corporation for the efforts to block the fill improvement.

EAST SIDE PLANT BIGGEST IN CITY

New Laundry Will Occupy Large Block on Tenth Street.

Construction work on the new Brown-Yale laundry building, to cover the half block on the east side of East Tenth street, between East Morrison and Belmont, will begin as soon as the excavation for the foundation and basement, which is under way, is finished. When completed and in operation this will be much the largest plant of its kind in Portland, and one of the largest and most up-to-date laundries in the west.

The building is to be four stories high, constructed of brick and steel, and will cost when completed between \$10,000 and \$100,000. It is to be an nearly fireproof as possible and is designed to carry an enormous live load, consisting of heavy modern mangles, centrifugal washing machines, drying machines and other up-to-date laundry machinery. The total cost of the plant when ready for operation will be in the neighborhood of \$100,000.

The Brown-Yale company is extensively engaged in operating laundries in the west, having plants at Duluth, Minnesota, and Minneapolis. After deciding to invade the Pacific northwest a member of the firm spent several weeks looking over the cities of Oregon and Washington, finally selecting Portland as offering the most promising field for investment. The site at East Morrison and East Tenth streets was purchased from Mrs. Sol Hirsch for \$25,000 and preparations immediately set on foot for putting up the building, which is just now getting under way. By the time the structure is completed quantities of machinery will be on the ground ready to be installed so that no delay will occur in getting the plant in operation by September 1.

EAST SIDE REALTY AGAIN IN THE LEAD

Transfers Yesterday Largely Represent Transactions East of the Willamette.

Transfers of realty valued at \$33,257 were filed for record yesterday including 12 deeds with considerations exceeding \$500, all of which, with one exception, represented sales of east side residences and building sites.

The following were the more important sales reported: fractional lot at Sunnyside, with cottage, sold by James A. Gray to William Gidamke for \$2,500. E. C. Hurbut to Amanda E. Hayward a house and lot in Grimes' addition to St. Johns, consideration \$1,800.

An unimproved lot on Thurman street, between Twenty-ninth and Thirtieth streets, Willamette Heights, purchased by Addies Parvin, from J. N. Brown for \$1,000.

Charles E. R. Chickles purchased from M. G. DuBuisson a house and lot on East Twelfth streets, between East Davis and East Couch, consideration \$2,150.

William J. Hill has purchased from George C. Hester a vacant lot on Laurel street, near Durham avenue, Woodlawn, for \$400.

R. E. Rice has sold to J. E. Blazier, a house and lot in Holladay Park, for \$6,500.

MOUNT SCOTT FACES ANNEXATION PROBLEM

A puzzling problem in connection with the annexation question has arisen in Mount Scott because of lack of concurrence between the lines of the voting precincts and the lines of the territory which it is proposed to vote into the city next June. No solution has so far been offered that will satisfactorily settle the point in the minds of the Mount Scott voters.

A great number of voters who live within the district that it is proposed to vote into Portland also live in the Lents precinct. How these voters will be distinguished from others who vote in the same place but live outside the district to be annexed is the problem.

Weavers Strike. St. Paul-by-the-Sea, France, Jan. 16.—Four hundred weavers who are at work in a mill here have been on strike because the quality of thread given for their work is bad.

Attend Rosenthal's great clearance sale for fine shoe bargains.

THE NEW BIG EAST SIDE STORE

Little Rents Make Small Profits

THIS world is big enough, is generous and kind enough to allow its wards—its cities—to expand. East Portland is yet a small ward but it's made of the stuff that makes nations. Destiny doesn't grow out of a night, neither is it the product of machinery, but it's an invisible power that must be met with power, it's the hidden future that gives to life the spice—the flavoring of uncertainty. Patriotism is the one grand unselfish essential to progress. It is inspiring to even greater things. Devote your energies at home—to the East Side—and watch the future of this new and greater Portland.

Greater Basement Specials for the Two Days

No. 8 STEEL SKILLET—19c ea. 30c value (Ten dozen of them.)



Best German China Cups and Saucers Dainty floral patterns, the two sizes, tea and coffee. Many different styles for your selection; all 35c values... 15c

50-Piece Dinner Sets In fine thin China, richly patterned in blue and white, gold and white, rose and violet decorations; \$8.50-\$9.50 values. The set, Friday and Saturday... \$5.95

Three Great Metal Bed Values In One



NOS. 626 and 664—Two values gathered in one and placed on sale with the other two.

One Hundred Beds In All At the One Valuable Choice \$4.10

Values \$6.50 and \$7.00—West Side stores would price them at \$10.00. Remember, it's now for the two days only, \$4.10

Two Most Unusual Chair Values for the Two Days

NO. 8701-3A—Hardwood Rocker for parlor, for sitting room or for bedroom. One of our most excellent \$2.50 values. A chair that on the west side could not be bought under \$3.50. We offer now for the two days—Friday and Saturday—only... \$1.65

NO. 294-1—Pine Dining Room Chair, built good and strong, for lasting service. Our regular 85c value. (\$1.00 at West Side stores.) Friday and Saturday, our better than clearance price, 55c only.



The Growing Popularity of Our Store for Men!

Friday and Saturday—Our Greater Than Clearance Sale Men's Suits at \$12.50

We can't advertise a clearance sale—for everything we have is brand new—but we can beat clearance prices—and we're going to put a crimp in clearances during these two days—Friday and Saturday. We claim to sell the best \$20.00 suits on the clothing market. We even offer and back them up as the equal of \$22.50 suits elsewhere. Now we offer the whole lot—new, stylish and shapely.

\$20 Suits at \$12.50 Friday and Saturday

Of course, we're not making money on the suits, but we're making friends—which is a lot more lasting than money. In the choice are stylish mixtures—of every sort—all-wool black Thibets, staple blue serges, all in one grand sale \$12.50

\$1.50 Underwear \$1.15 The famous Cooper, sanitary natural wool and Vicuna garments; the best at any price; all sizes; Friday and Saturday \$1.15

9x12 BEST 9-WIRE TAPESTRY RUGS—Floral and oriental (24) patterns. Regular \$25.00 values at \$16.35



W. H. MARKELL & CO. LEADING EAST SIDE DEPARTMENT STORE EAST MORRISON ST. AND UNION AVENUE

At 5 Cents Seven and 8-inch Earthenware Cooking Dishes. White lined; regular 10¢ and 15¢.

Men's \$13.50, \$15, \$16.50 and \$17.50 Overcoats, at \$9.95

Boys' \$4.00, \$4.50 Suits, at \$2.85

Girls' \$2.00 and \$2.25 Shoes, at \$1.45

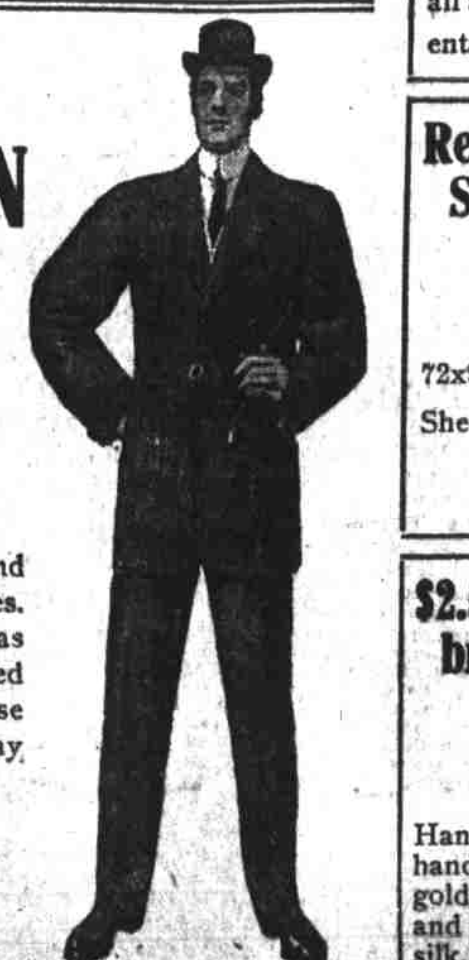
Clearance Sale Values Are Much Greater Here

See these rapid clearing prices below for Friday, Saturday and Monday selling.

Misses' Coats, One-Half Price

ALL LADIES' SUITS AND COATS GREAT REDUCTIONS

Latest Style SUITS FOR MEN Regular Price, \$15, \$16.50 \$17.50, \$18.50, \$20.00 at \$9.95



Millinery at Half Our elegant stock of trimmed and untrimmed Hats, usually priced much below west side prices, are now reduced to just one half.

Ladies' \$8.00 Rain-coats at \$3.65

Reg. \$2.50 Tapestry Couch Cover \$1.63

Reg. 65c Bleached Sheets, at 47c

\$2.50 and \$3 Umbrellas at \$1.69

THE ROSS CO. 87 Grand Ave. IN THE LOW RENT DISTRICT Wholesale and Retail

Build Hardware and Tools

The Barnes Three-Wheel Pipe-Cutter

PENNEY BROS Friday Specials

Our Friday Price \$1.00 OUR \$4.00 GRADE OF WHISKEY, FRIDAY \$3.50 "QUALITY" (OUR MOTTO) Our goods all fulfill the guarantee of the pure food law. FREE DELIVERY 379-381 East Morrison St. Phone: East 1577, 2-1577