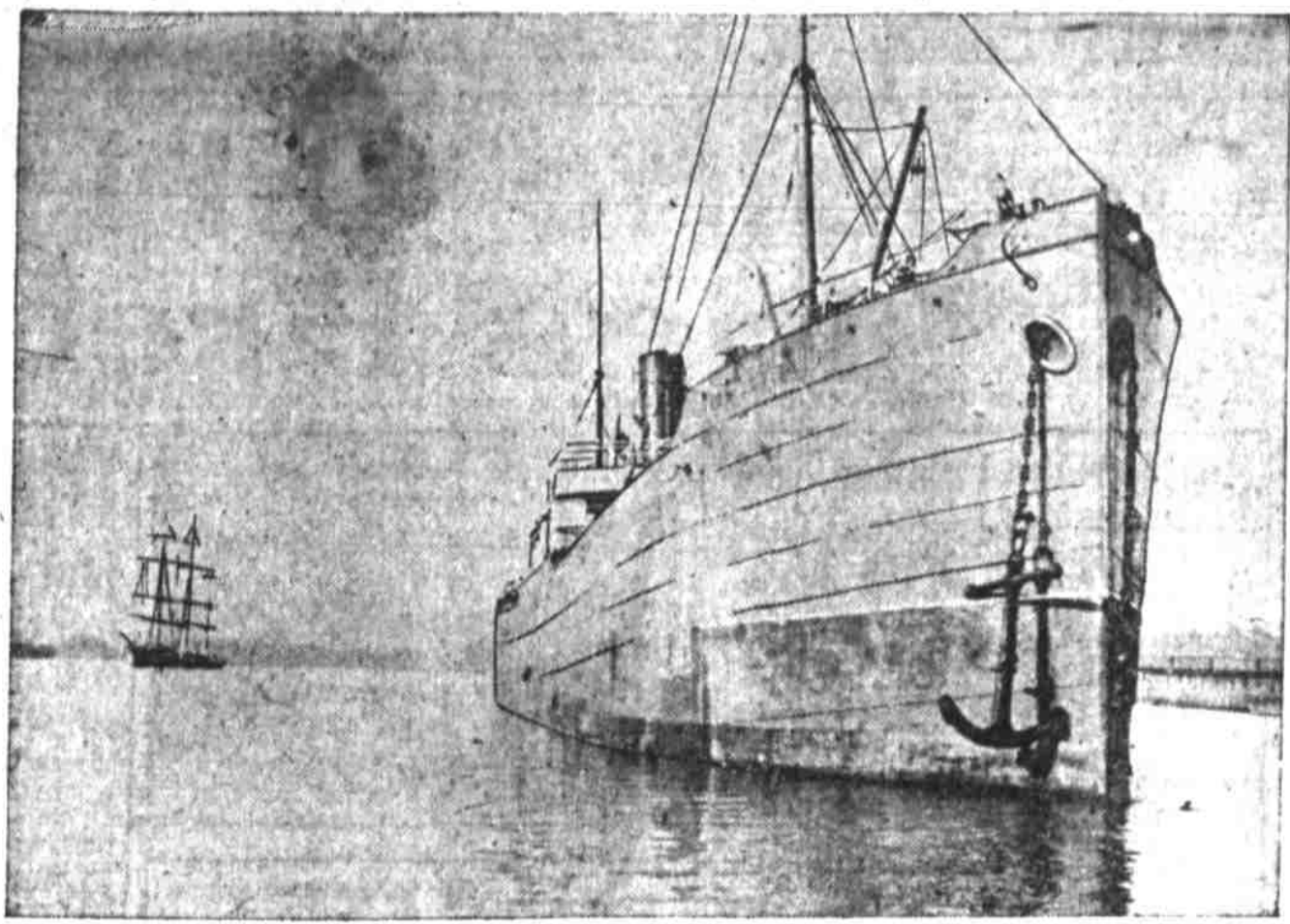


LEAPS INTO SEA TO KILL ENEMY

Whiskey-Crazed Passenger Creates Excitement on Steamer Roanoke.

CRAFT FROM SHORE COMES TO RESCUE

Steamer Which Arrived Here Last Night Spoke Dismasted Schooner Lillebonne Off Stormy Point Reyes but Help Was Declined.



British steamer Queen Louise shifting to Oceanic dock to complete cargo after having been in harbor only since last Saturday night. She will carry away 6,000 tons of wheat.

Crazed with drink and promising to slay on sight an imagined enemy ashore, J. McCarthy, a passenger on the steamer Roanoke, leaped overboard in the bay off Eureka with the intention of swimming to land. He was picked up by a boat from shore when nearly exhausted and is supposed to be still at Eureka.

The details of the sensational act were brought to Portland last night when the Roanoke arrived at Martin's dock from San Pedro and way ports. The man came on board at San Francisco and went ashore at Eureka to see the town. He engaged in a row but did not think of killing his man until the steamer had pulled from the dock and was lying at anchor in the bay waiting for the tide. Then he leaped over the side into the rough and cold water and swam lustily for shore. Luckily the shore boat happened to be near or he would have drowned.

CEMENT FOR RAILROAD.

Large Cargo Arrives on the French Bark Europe.

With 22,000 barrels of cement in her hold, the French bark Europe arrived in the harbor this afternoon. The entire cargo is to be used in the construction of the Portland-Seattle north bank road, the material having been sold to the railroad people by W. P. Fuller & Co. the consignee.

She need hardly be expected here till February 1. The next cement carrier due here is the French bark Sully, which left Hamburg in the latter part of June. She will be followed by Ville de Mulhouse, Marie, Corbi, Edouard Detaille, Alice Pierri, Lodi, and Albertfoyle, consigned to W. P. Fuller & Co. The Buclench Arctic Steam and Milling Co. line, consigned to Meyer, Wilson & Co., the Ville de Dejon, Guethary, Eugene Pergeline and Ernest Logouev, consigned to Balfour, Guthrie & Co.; the Bayard, consigned to Hind, Rolph & Co., and the Emmanuel Accame, consigned to Kerr, Gifford & Co.

EXPORTS SHOW INCREASE.

Department of Commerce and Labor Issues Monthly Report.

During the 10 months ending October 31, the United States exported 88,293,301 bushels of wheat, valued at \$52,807,481, as compared with 45,442,804 bushels, valued at \$33,605,025 during the corresponding months of last year. During the 10 months of this year the flour exports were 12,421,907 barrels, valued at \$54,182,182, as against 11,668,989 barrels, valued at \$47,928,932 in the corresponding months of 1906.

Lumber Carriers En Route.

Excelsof, Am. sch. San Francisco; Comper, Am. sch. San Francisco; F. S. Loop, Am. str. San Francisco; C. S. Holmes, Am. sch. San Francisco; J. Marchoff, Am. sch. San Francisco; James Ralph, Am. sch. San Francisco; Alvena, Am. sch. San Francisco; Johan Poulsen, Am. sch. San Francisco; En Route With Cement and General.

En Route in Ballast to Load Grain.

Gael, Fr. bk. Puget Sound; Dumfrieshire, Fr. bk. Port Los Angeles; Sully, Fr. bk. San Francisco; Celtic Chief, Fr. bk. Honolulu; Strathgryfe, Fr. bk. Callao; Alsterkamp, Ger. bk. Callao; Schubek, Ger. bk. Valparaiso; Gienelvan, Fr. bk. Santa Isabel; Amazon, Fr. bk. Molokai; Alexander Black, Fr. bk. San Diego; Windsor Park, Fr. bk. Caldera; Clan Buchanan, Fr. bk. Santa Isabella; Clackmannanshire, Fr. bk. Valparaiso; Elginshire, Fr. bk. Caldera; Lanza, Fr. bk. Valparaiso; Charles Lounsd, Fr. bk. Callao; Armen, Fr. bk. San Francisco; Carnarvon Bay, Fr. bk. West Coast; Lady Woodley, Fr. bk. Callao; Cumberland, Fr. bk. Callao; Earl of Dunmore, Fr. bk. Callao; Cloch, Fr. bk. Taitai; Acme, Am. sch. Japan; Wayfarer, Fr. bk. Valparaiso; Nordsee, Ger. bk. Callao.

Coal Ships En Route.

Belen, Fr. bk. Newcastle, A.; Willcott, Am. bk. Newcastle, A.; Ardenraigh, Fr. bk. Newcastle, A.; Eugene Schneider, Fr. bk. Newcastle, A.; Buffon, Fr. bk. Newcastle, A.; Castle Rock, Fr. bk. Sydney, A.; Emily Keed, Am. sch. Newcastle, A.; Ancalos, Fr. bk. Newcastle, A.; Haddock Castle, Fr. bk. Newcastle, A.; Calluna, Fr. bk. Newcastle, A.; Largiemore, Fr. bk. Newcastle, A.; Mindoro, Am. sch. Newcastle, N. S. W.; Agnes Oswald, Fr. bk. Newcastle, A.; Hatumet, Fr. bk. Newcastle, A.

Tramp Steamers En Route.

Strathllian, Br. ss. Vancouver, B. C.

Oil Steamers En Route.

Atlas, Am. ss. San Francisco.

ALONG THE WATERFRONT.

The steam schooner Washington is loading wheat at Montgomery dock No. 1.

Blain, Washington, is anxious to be equipped with a storm warning system.

According to a letter received by District Forecaster Beals of the weather bureau this morning.

The steamer Breakwater left Oak street wharf for Coos Bay last night.

The Alliance is due here tomorrow from Coos.

The part of Portland bridge Portland was towed to the drydock today to be lifted for repairs.

The Harlan liner City of Panama left San Francisco this morning for Portland with a cargo of freight.

The Senator left Portland yesterday with passengers and freight. The intention is to keep three boats on the route as long as freight to fill them is offered.

MARINE NOTES

Astoria, Nov. 21.—Left up at 9 a. m. British bark Miltonburn. San Francisco, Nov. 21.—Sailed at 8 a. m. steamer City of Panama for Portland. Astoria, Nov. 20.—Arrived at 1:30 and left up at 2:30 steamer Colonel E. L. Drake from San Francisco, arrived down at 8:30 p. m. steamer Northland. San Francisco, Nov. 20.—Sailed at 10 p. m. steamer Anselon for Portland. San Pedro, Nov. 21.—Arrived schooner Marie from Portland. Astoria, Nov. 21.—Condition of the

Energy for breakfast to start the day. Sustenance for lunch to carry you through. Rest and renewed strength at close of day. The food ideal for every meal.

Uneda Biscuit

More nutritious than any other wheat food.

5c In moisture and dust proof packages. NATIONAL BISCUIT COMPANY

CITY MAIL ORDERS

FOR CALVE RECITAL

Beginning next Monday, November 25, mail orders from this city and out of town will be received for the world's greatest soprano, Madam Emma Calve and company of artists, who will be

CUBES WINTER COUGH.

J. E. Gover, 101 N. Main street, Ottawa, Kansas, writes: "Every fall it has been my wife's trouble to catch a severe cold, and therefore to cough all winter long. Last fall I got her a bottle of Horehound Syrup. She used it and has been able to sleep soundly all night long. Whenever she coughs troubles her, two or three doses stop the cough, and she is able to be up and well." 25c, 50c and \$1.00. Sold by all druggists.

heard at the Hellig theatre Thursday night, December 5. Address letters and make post money orders payable to W. T. Pankle, manager Hellig theatre, enclosing an addressed stamped envelope for safe return. The regular box office sale opens December 2. Mail orders from this city (and out of town) will be filled and returned before the sale opens at the box office. Phone Hellig theatre for any information required.

ELECTRIC HORNS TO BE USED BY ROADS

(Special Dispatch to The Journal.) Berlin, Nov. 21.—The director of Prussian railroads, having made various experiments to assure the safety of trains by means of signals, has finally chosen a system of pneumatic controls similar to those used on automobiles, of which two or three are fixed on the telegraph poles at intervals of 100 meters, operated by electricity. It is recognized that the apparatus gives sure notice of the passage of trains.

Twenty-five per cent off on watches at Metzger's.

And It's a Fact! Columbia Tailoring Acknowledges No Equal

Better in character of fabrics; better in making and finishing; better in fit and style; handsomer, nobbler, more satisfactory in wearing qualities, than any clothing of any other make—tailor-made or ready-made—to be purchased in this town. Columbia hand-tailored, made-to-measure garments cost a third less than other first-class tailors' productions, and no more than the better grades of ready-made. One order proves it.

OUR Twenty-Five Dollar High Quality Serges

Black or blue, make a suit that for all-round service is incomparable at the price. One "feel" of the goods, one look at the finished suits in our delivery room, will convince you that you need Columbia attire, both for appearance and economy standpoints.

Suits—\$20 to \$40. Overcoats and Raincoats—\$20, \$25 and upward. Trousers—\$4 to \$10.

Columbia TAILORS GRANT PHEGLEY, Manager. Elks' Building Seventh and Stark

WORK FOR BOAT YARDS.

Government Engineers Will Have Two Crafts Constructed.

Ship and boat builders are invited to bid upon the construction of a steamboat to be used for work on the Columbia river above Celilo, the United States engineers having prepared specifications, copies of which may be had at the office of the U. S. Engineer in the custom-house building. Specifications for the construction of a dredge for use in the coastwise trade are being prepared and will be ready for distribution by the twenty-third of this month. For full work an appropriation of \$1,000 was made in the last harbor and rivers bill. Bids for the steamboat will be opened at 11 o'clock a. m. December 20. The boat is to be built at Astoria and to have a draft not to exceed 24 inches, and a speed of not less than 16 miles per hour. Following are the proposed dimensions: Length, 160 feet 10 inches; beam, 34 feet; depth molded at sheer, 5 feet 6 inches. The machinery is to be of the steam-wheel type of horizontal engine, with cylinders 18 inches in diameter and 84 inches stroke. It is desired that the boat shall be ready for service not later than July 1, 1908.

MARINE INTELLIGENCE.

Regular Liners Due to Arrive. Alliance, Coos Bay, Nov. 22; Senator, San Francisco, Nov. 22; Breakwater, Coos Bay, Nov. 24; City of Panama, San Fran., Nov. 25; E. W. Elder, San Pedro and way, Nov. 25; Costa Rica, San Francisco, Nov. 29; Numanita, orient, Nov. 30; Roanoke, San Pedro and way, Dec. 2; Alesia, orient, Dec. 2; Nicomedia, orient, Jan. 15.

Regular Liners to Depart. Roanoke, San Pedro and way, Nov. 22; Alliance, Coos Bay, Nov. 23; Numanita, orient, Nov. 26; Senator, San Francisco, Nov. 26; Breakwater, Coos Bay, Nov. 28; Costa Rica, San Francisco, Dec. 2; Aralia, orient, Dec. 13; Nicomedia, orient, Jan. 15; Alesia, orient, Jan. 15.

Vessels in Port. North King, Am. tug, Astoria; St. Nicholas, Am. sh., Astoria; St. Mary, Am. tug, Astoria; Berlin, Am. sh., Goble; Grays Harbor, Am. ss., Linnton; Fort Patrick, Fr. sh., Ind. bunkers; Majore, Fr. sh., Ind. bunkers; Churchill, Am. sch., Knappa; Homeward Bound, Am. bk., O. & C.; Annie M. Campbell, Am. sch., Tongue Pt.; C. E. Crocker, Am. sch., Linnton; Marchal Turere, Fr. bk., Colum. No. 1; Claverdon, Fr. sch., O. & C.; Tiburis, Ger. ss., Astoria; Americans, Am. sch., Knappa; James A. Garfield, Am. sch., Astoria; Woodford, Fr. sh., Elevator; Wier, Nor. sh., Elevator; Borderer, Fr. sh., Montgomery No. 2; Auchencrag, Fr. sh., Elevator; St. Miran, Fr. sh., Pacific; Salvator, Am. sch., Westport; Transit, Am. sch., Tongue Point; Paramita, Am. bk., Linnton; Quebec Louise, Fr. bk., Quebec; Como, Fr. ss., E. & W. Mills; Versailles, Fr. bk., Stream; Martha Cook, Fr. bk., Greenwich; Westler, Am. bktn., Linnton; Waverree, Br. bk., Astoria; Miltonburn, Br. bk., On way up; Thiers, Fr. sh., Astoria; Ostara, Ger. bk., Banfield's; Cronin, Fr. bk., Stream; Washington, Am. ss., Montgomery No. 1; Henry Villard, Am. sh., Goble; Goope, Fr. bk., Columbia, No. 1.

OUR GREAT MONEY-RAISING SALE

Is gaining prestige every day. Throngs are buying. Are you sharing in the great bargains? We've planned some sensational selling for Friday. Values you have seldom met with, here or elsewhere. Circumstances compel us to sacrifice our mammoth new stock of Ladies' Stylish Ready-to-Wear Apparel at less than the manufacturers' prices. We quote here a few of the wonderful specials for Friday, BUT BEAR IN MIND EVERY ARTICLE IN OUR STORE IS LIBERALLY AND DECISIVELY REDUCED!

Your choice of any \$30 Coat in the house, \$15.00

Children's Coats, regular \$7.50 values, \$2.25

VERY SPECIAL Your choice of a big assortment of pretty Waists, values up to \$15.00, \$3.95

LADIES' SUITS—Reg. \$15 values, \$4.50

SILK PETTICOATS—\$12.50 values, \$4.75; \$6.50 values, \$3.95

CAPE GLOVES—\$3.50 value, \$2.00

STREET GLOVES—\$1.50 value, \$1.00

SILK HOSE—Values up to \$6.75, choice, \$2.95

KIMONOS—Regular \$1.50 values, choice, 69¢



Your choice of any \$30 Suit in the house, \$15.00

Skirts, values up to \$15, choice, \$5.95

EXTRAORDINARY VALUES FUR TIES Regular prices up to \$15.00, \$5.00

MISSES' SUITS—Regular \$15 values, \$7.75

BATHROBES—Gray, pink, blue, red. Values up to \$7.50, \$3.35

UMBRELLAS—\$1.25 value, 75¢; \$3.00 value, \$1.50

ELASTIC BELTS—All colors, steel buckles, 50¢ values, \$25¢

ODDS AND ENDS IN FANCY LEATHER BELTS Values up to \$1.75, choice, 75¢

WE HAVE CUT GOOD AND DEEP ON ALL MILLINERY

200 TRIMMED HATS—Values up to \$3.50, at 95¢; 200 TRIMMED HATS—Values up to \$6.00, at \$2.49

ALL PATTERN HATS AT HALF PRICE

ODDS AND ENDS IN LADIES' Jersey Ribbed Vests and Pants Ladies' Muslin Drawers Wool, silk and wool, silk and cotton, all sizes, including extra sizes. Values up to \$1.50, 75¢

Wholesale and Retail

THE J. M. ACHESON CO.

Corner of Fifth and Alder