



PLENTY OF STONE FOR STRUCTURES

Architects Believe Frame Will Go Out of Style Soon.

QUANTITIES OF GOOD ROCK CLOSE TO CITY

Quarries Close to Portland and Throughout Willamette Valley Accessible to Local Builders—Stone Buildings Are Cheaper in the End.

"How long before the pendulum will swing back, bringing stone again into favor as a building material?" asked a well-known Portland architect who is known to have a strong preference for the massive stone construction that was so popular a decade or more ago, examples of which may be seen in the Chamber of Commerce, the Portland Trust Company or Oregon at Third and Oak streets, the First Presbyterian church and the lower stories of the Portland hotel, the Imperial hotel and the Marquam, Oregonian and Dekum buildings.

While it is not probable that steel will ever be discarded as the frame of most of the heavy urban construction, it is altogether likely that stone will in a few years be as generally used in the walls of this class of construction as brick are now. In fact, in some of the more recent skyscrapers in the eastern cities, notably Baltimore, small stones about twice the size of an ordinary brick are being used in the walls of the big steel skeleton structures.

Portland builders and architects will after while tire of the plain brick wall and demand something more ornamental, when recourse will be had to the inexhaustible variety and supply of excellent building stone within reach of this city. No state in the union has a larger variety of fine granite buildings than Oregon.

Within the limits of Portland there is an inexhaustible supply of basaltic rock that is admirably adapted to house-building. It is finely colored and was effectively used in Trinity church at Nineteenth and Everett streets, and in St. Vincent's hospital.

The St. Helens quarry of basaltic rock is but a few miles from the city. It has successfully passed the severest tests and has been utilized in some of the city's handsomest buildings.

There is a very general belief that stone as a building material is much more expensive than either frame or brick, but this is a very erroneous and erroneous. The building committee of the Methodist church south found that the cost of a stone structure is practically the same as a frame structure, but in the end it is far cheaper.

The life of a frame building is but little more than 20 years, while constant care and expense is required to maintain it, while a stone house is practically indestructible and requires neither paint nor repairs. A stone building may cost twice that of a frame structure, but in the end it is far cheaper.

Architect Emil Schacht has finished plans for the following buildings which are ready for contractors' bids: Two and one half story 14-room residence for Mrs. J. A. Veness of Winlock, Washington, to be built at the northwest corner of Twentieth and Johnson streets; W. J. Zimmerman's two-story nine-room residence to be erected at East Twenty-second and Welder streets, estimated cost \$3,000; apartment house on King street near Washington to be built for Judge Charles Page at a cost of about \$10,000; William Elliot's frame residence on Cornell road to cost \$4,500, and a bungalow on West Park street, between Columbia and Clay, estimated cost \$3,000.

Architect Emil Schacht has finished plans for the following buildings which are ready for contractors' bids: Two and one half story 14-room residence for Mrs. J. A. Veness of Winlock, Washington, to be built at the northwest corner of Twentieth and Johnson streets; W. J. Zimmerman's two-story nine-room residence to be erected at East Twenty-second and Welder streets, estimated cost \$3,000; apartment house on King street near Washington to be built for Judge Charles Page at a cost of about \$10,000; William Elliot's frame residence on Cornell road to cost \$4,500, and a bungalow on West Park street, between Columbia and Clay, estimated cost \$3,000.

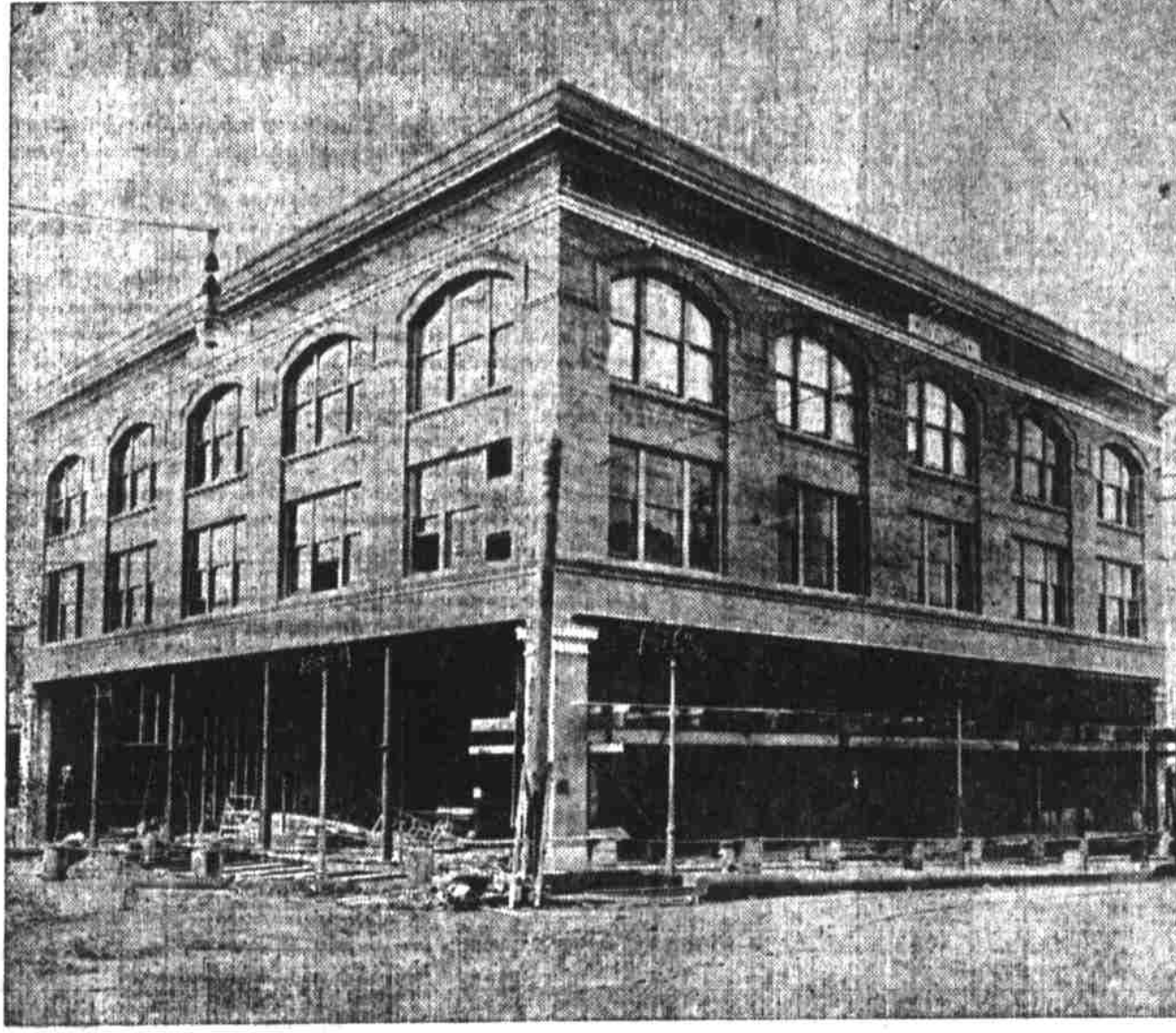
Another east side residence for which ground was broken during the present week is that of Mrs. L. Murphy, who is just beginning the erection of a two-story frame house on Halsey street, between East Third street and Union avenue, at a cost of \$4,500.

Another east side residence for which ground was broken during the present week is that of Mrs. L. Murphy, who is just beginning the erection of a two-story frame house on Halsey street, between East Third street and Union avenue, at a cost of \$4,500.

Another east side residence for which ground was broken during the present week is that of Mrs. L. Murphy, who is just beginning the erection of a two-story frame house on Halsey street, between East Third street and Union avenue, at a cost of \$4,500.

Another east side residence for which ground was broken during the present week is that of Mrs. L. Murphy, who is just beginning the erection of a two-story frame house on Halsey street, between East Third street and Union avenue, at a cost of \$4,500.

Another east side residence for which ground was broken during the present week is that of Mrs. L. Murphy, who is just beginning the erection of a two-story frame house on Halsey street, between East Third street and Union avenue, at a cost of \$4,500.



Buckman Building, East Burnside Street and Union Avenue, Gevurtz' New House-Furnishings Store.

FAMILY HOTELS TO BE OPENED SOON

Handsomes Structures Will Help Relieve Big Demand of Rapid Growing City.

Within the next 30 days Portland's hotel accommodations will be largely increased by the completion and opening of two handsome new family hotels.

The Holbrook-Lanson structure at the southwest corner of Eleventh and Stark streets is beginning to take on the appearance of a completed building. The walls are up, the roof in place and a large force of mechanics are engaged on the interior finishing.

The Weatherby-McClung family hotel going up on Ella street, near Washington, when completed, will be an attractive addition to the upper Washington street district. This structure is six stories high, built in the shape of an "E" and will cost about \$20,000.

The Weatherby-McClung family hotel going up on Ella street, near Washington, when completed, will be an attractive addition to the upper Washington street district. This structure is six stories high, built in the shape of an "E" and will cost about \$20,000.

Another modern hotel that is nearing completion is that of Dr. C. W. Cornelius on Park and Alder streets. Five of the six stories are finished. The lower floor of this building will be utilized for business purposes, the five upper stories having been leased to a well known hotel man, who will open the new hostelry about January 1.

Another east side residence for which ground was broken during the present week is that of Mrs. L. Murphy, who is just beginning the erection of a two-story frame house on Halsey street, between East Third street and Union avenue, at a cost of \$4,500.

Another east side residence for which ground was broken during the present week is that of Mrs. L. Murphy, who is just beginning the erection of a two-story frame house on Halsey street, between East Third street and Union avenue, at a cost of \$4,500.

Another east side residence for which ground was broken during the present week is that of Mrs. L. Murphy, who is just beginning the erection of a two-story frame house on Halsey street, between East Third street and Union avenue, at a cost of \$4,500.

Another east side residence for which ground was broken during the present week is that of Mrs. L. Murphy, who is just beginning the erection of a two-story frame house on Halsey street, between East Third street and Union avenue, at a cost of \$4,500.

Another east side residence for which ground was broken during the present week is that of Mrs. L. Murphy, who is just beginning the erection of a two-story frame house on Halsey street, between East Third street and Union avenue, at a cost of \$4,500.

Another east side residence for which ground was broken during the present week is that of Mrs. L. Murphy, who is just beginning the erection of a two-story frame house on Halsey street, between East Third street and Union avenue, at a cost of \$4,500.

Another east side residence for which ground was broken during the present week is that of Mrs. L. Murphy, who is just beginning the erection of a two-story frame house on Halsey street, between East Third street and Union avenue, at a cost of \$4,500.

Another east side residence for which ground was broken during the present week is that of Mrs. L. Murphy, who is just beginning the erection of a two-story frame house on Halsey street, between East Third street and Union avenue, at a cost of \$4,500.

TOWN AND NAME NOT CONNECTED

Portland Cement Got Title From Its Similarity of Color to Stone.

QUARRY LOCATED IN PORTLAND, ENGLAND

Mixture Was First Mixed on Sidewalk—Industry Is Growing to Enormous Proportions—Super-sedes Hydraulic Cement.

From the fact that the R. C. Rickmers, said to be the largest sailing vessel, with steam auxiliary, afloat, recently discharged at the San Pedro docks, 40,000 barrels of Portland cement, a spirited and widespread discussion has arisen among California papers as to what is "Portland cement."

The fact that the R. C. Rickmers, said to be the largest sailing vessel, with steam auxiliary, afloat, recently discharged at the San Pedro docks, 40,000 barrels of Portland cement, a spirited and widespread discussion has arisen among California papers as to what is "Portland cement."

The fact that the R. C. Rickmers, said to be the largest sailing vessel, with steam auxiliary, afloat, recently discharged at the San Pedro docks, 40,000 barrels of Portland cement, a spirited and widespread discussion has arisen among California papers as to what is "Portland cement."

The fact that the R. C. Rickmers, said to be the largest sailing vessel, with steam auxiliary, afloat, recently discharged at the San Pedro docks, 40,000 barrels of Portland cement, a spirited and widespread discussion has arisen among California papers as to what is "Portland cement."

The fact that the R. C. Rickmers, said to be the largest sailing vessel, with steam auxiliary, afloat, recently discharged at the San Pedro docks, 40,000 barrels of Portland cement, a spirited and widespread discussion has arisen among California papers as to what is "Portland cement."

The fact that the R. C. Rickmers, said to be the largest sailing vessel, with steam auxiliary, afloat, recently discharged at the San Pedro docks, 40,000 barrels of Portland cement, a spirited and widespread discussion has arisen among California papers as to what is "Portland cement."

The fact that the R. C. Rickmers, said to be the largest sailing vessel, with steam auxiliary, afloat, recently discharged at the San Pedro docks, 40,000 barrels of Portland cement, a spirited and widespread discussion has arisen among California papers as to what is "Portland cement."

The fact that the R. C. Rickmers, said to be the largest sailing vessel, with steam auxiliary, afloat, recently discharged at the San Pedro docks, 40,000 barrels of Portland cement, a spirited and widespread discussion has arisen among California papers as to what is "Portland cement."

The fact that the R. C. Rickmers, said to be the largest sailing vessel, with steam auxiliary, afloat, recently discharged at the San Pedro docks, 40,000 barrels of Portland cement, a spirited and widespread discussion has arisen among California papers as to what is "Portland cement."

The fact that the R. C. Rickmers, said to be the largest sailing vessel, with steam auxiliary, afloat, recently discharged at the San Pedro docks, 40,000 barrels of Portland cement, a spirited and widespread discussion has arisen among California papers as to what is "Portland cement."

The fact that the R. C. Rickmers, said to be the largest sailing vessel, with steam auxiliary, afloat, recently discharged at the San Pedro docks, 40,000 barrels of Portland cement, a spirited and widespread discussion has arisen among California papers as to what is "Portland cement."

The fact that the R. C. Rickmers, said to be the largest sailing vessel, with steam auxiliary, afloat, recently discharged at the San Pedro docks, 40,000 barrels of Portland cement, a spirited and widespread discussion has arisen among California papers as to what is "Portland cement."

SOUTHERN SUPPLY OF LUMBER GONE

Surplus of Local Product in San Francisco Has Been Consumed.

Lumber manufacturers say the California market for building material is stiffening quite a bit and they believe that the surplus accumulated in the yards of the Bay City during the period when everybody poured cargoes and carloads into the field with the expectancy of making hay while the sun shone has about been worked off. This looks good to the mill men, because under normal conditions California is a good market for the products from the Oregon forests.

The local demand for building lumber is brisk and as good as could be hoped for, but it has a limit or the mill men would not worry over threat of advancing freight rates to points east or any other place. The output of the local mills is much in excess of the local demand, however, and for that reason the outcome of the controversy between the mill men and the railroads will be watched with intense interest here by contractors, as well as by the mill men themselves, though the lumber bill for an ordinary dwelling does not figure to a very large extent in the total cost, labor, plumbing and finishing being the greater items of expense.

Lumber men declare that there is little likelihood of lumber becoming much cheaper here even if the proposed freight advance becomes effective, because in that event the mills will simply reduce the production commensurate with the demand.

They contend that the price of logs and the cost of labor will prohibit any possibility of much rate-cutting and the loggers are said to have the situation so well in hand that they need not entertain the thought of a mill reduce orders. There is a sufficient number of logs being brought to the mills to meet all present demands, but by shutting down the saws and reducing reduced gangs the output of logs can easily be held down to the actual demand.

They are having no trouble getting logs at the prices established or agreed upon when the camps opened up about a month ago, but a prominent mill man this morning, "but I understand the loggers do not propose to put logs into the water faster than they can take them up, and the shingles will be a fair profit. In view of this fact there is little likelihood of lumber prices being reduced, even if the proposed advance becomes effective."

Shingles Go Down. A report from Seattle states that shingle prices have gone of 25 cents as a result of a sensational bear raid made on the market by a group of wholesalers anxious to beat down the price of shingles for the late fall trade.

The illustration on this page represents the Buckman building, a four-story, mill-constructed building, which was put up at the southeast corner of Union avenue and East Burnside street, and leased for a term of years to Gevurtz & Sons, who will occupy it within the next 30 days with a large stock of general furnishings. The building will cost when completed about \$40,000 and is one of the most substantial and conveniently arranged business houses on the east side.

The illustration on this page represents the Buckman building, a four-story, mill-constructed building, which was put up at the southeast corner of Union avenue and East Burnside street, and leased for a term of years to Gevurtz & Sons, who will occupy it within the next 30 days with a large stock of general furnishings. The building will cost when completed about \$40,000 and is one of the most substantial and conveniently arranged business houses on the east side.

The illustration on this page represents the Buckman building, a four-story, mill-constructed building, which was put up at the southeast corner of Union avenue and East Burnside street, and leased for a term of years to Gevurtz & Sons, who will occupy it within the next 30 days with a large stock of general furnishings. The building will cost when completed about \$40,000 and is one of the most substantial and conveniently arranged business houses on the east side.

The illustration on this page represents the Buckman building, a four-story, mill-constructed building, which was put up at the southeast corner of Union avenue and East Burnside street, and leased for a term of years to Gevurtz & Sons, who will occupy it within the next 30 days with a large stock of general furnishings. The building will cost when completed about \$40,000 and is one of the most substantial and conveniently arranged business houses on the east side.

The illustration on this page represents the Buckman building, a four-story, mill-constructed building, which was put up at the southeast corner of Union avenue and East Burnside street, and leased for a term of years to Gevurtz & Sons, who will occupy it within the next 30 days with a large stock of general furnishings. The building will cost when completed about \$40,000 and is one of the most substantial and conveniently arranged business houses on the east side.

The illustration on this page represents the Buckman building, a four-story, mill-constructed building, which was put up at the southeast corner of Union avenue and East Burnside street, and leased for a term of years to Gevurtz & Sons, who will occupy it within the next 30 days with a large stock of general furnishings. The building will cost when completed about \$40,000 and is one of the most substantial and conveniently arranged business houses on the east side.

The illustration on this page represents the Buckman building, a four-story, mill-constructed building, which was put up at the southeast corner of Union avenue and East Burnside street, and leased for a term of years to Gevurtz & Sons, who will occupy it within the next 30 days with a large stock of general furnishings. The building will cost when completed about \$40,000 and is one of the most substantial and conveniently arranged business houses on the east side.

PORTLAND'S GAIN AMONG HIGHEST

Only 22 Cities in United States Have Big Building Record.

ROSE CITY ALONG WITH TOP LINERS

New York, Chicago and Other Big Eastern Centers Report Loss in Building Statistics as Compared With August of Last Year.

Out of 48 of the larger cities in the United States, 22 show gains in building construction varying from 1 to 463 per cent for the month of August, compared with the building record for the same month in 1906. Twenty-six other cities show a slight decrease, ranging from 1 to 73 per cent in the same table of statistics.

It will be recalled that August, 1906, was a record breaker in the building construction line throughout the country, and as only a 3 per cent loss is reported the statistics of the past month are by no means discouraging. But for the big losses reported in half a dozen of the largest cities in the country there would have been a substantial gain shown for August, 1907.

Greater New York reports a loss of more than \$4,000,000 or 21 per cent. Chicago's decrease is nearly \$1,000,000, equal to 17 per cent. Philadelphia reports a 5 per cent decrease, while St. Louis reports the heaviest per cent decrease of any of the largest cities—32 per cent. Baltimore and Cleveland each report a small decrease, the former 8 and the latter 8 per cent.

The following statistics, compiled and tabulated by the American Contractor of Chicago, give the whole story.

Table with columns: City, cost Aug. 1907, cost Aug. 1906, gain or loss. Lists cities like Baltimore, Birmingham, Chicago, Cambridge, etc., with their respective percentage changes.

\*Pet. loss. \*\*Mobile issued one permit for 248,000 in August, 1906.

WILL OCCUPY NEW QUARTERS IN 60 DAYS

Buckman Building Will House Gevurtz & Sons in a Short Time.

The illustration on this page represents the Buckman building, a four-story, mill-constructed building, which was put up at the southeast corner of Union avenue and East Burnside street, and leased for a term of years to Gevurtz & Sons, who will occupy it within the next 30 days with a large stock of general furnishings. The building will cost when completed about \$40,000 and is one of the most substantial and conveniently arranged business houses on the east side.

CAR SHORTAGE HOLDS BACK ALL WHEAT

(Special Dispatch to The Journal.) La Grande, O., Sept. 21.—Already it is estimated by wheat dealers that between 500,000 and 600,000 bushels of wheat have been purchased from Grande Ronde growers and that amount is being delivered to wheat dealers of the valley for shipment. The exportation is being delayed on account of the shortage of cars. Harvest will not be over for several weeks. Prices are good and with the thousands of bushels yet to be shipped the returns will be very good.

WOMAN SOCIALIST IS FINED FIVE

(Special Dispatch to The Journal.) Spokane, Wash., Sept. 21.—Miss Ida Crouch-Hazlett, the socialist orator who caused 6,000 persons to block the street recently, has been fined \$5 and costs in Judge Sullivan's court. Her attorney has appealed.

Little liners in The Journal cost only a cent a word. Fifteen words or less 15 cents an insertion. Phone: Main 7175; A-2359.

Advertisement for BARRETT MFGRS. AGENCY, featuring 'ELECTRICAL APPLIES' and 'When You Build Your New Home and Need'.

Advertisement for AVERY & CO., featuring 'A Cordial Invitation' and 'Build Your House With Hollow Cement Blocks'.

Advertisement for THE LUTKE MFG. CO., featuring 'SHOW CASES Bank and Store Fixtures' and 'Build Your House With Hollow Cement Blocks'.

Advertisement for Columbia Wire & Iron Works, featuring 'Fire Escapes - Elevator Enclosures - Fences' and 'Repair Work Given Prompt Attention'.

Advertisement for PHOENIX IRON WORKS ENGINEERS, featuring 'CEMENT' and 'The Electrical Appliance Co.'.

Advertisement for THE ADAMANT COMPANY'S, featuring 'CROWN BRAND' Hair Fibrated Wood Fibre Plaster.

Advertisement for THE J. McCRACKEN COMPANY, featuring 'Roche Harbor Lime, Aisen's Portland Cement'.

Advertisement for CITY IRON WORKS, featuring 'BLACKSMITHS, MACHINISTS, BOILERMAKERS'.

Advertisement for ASBESTOS Portland Asbestos Mfg. Co., featuring 'Office and Salesroom, 272 Gilsan Street'.

Advertisement for G. FRANK MOFFETT, featuring 'Architects' and Engineers' Supplies, Y. M. C. A. Drawing Outfits'.

Advertisement for MORRISON ELECTRIC CO., featuring 'ELECTRIC FIXTURES, GAS FIXTURES, SUPPLIES OF ALL KINDS'.

The M. J. Walsh Co. Salesrooms 511 Stark St., Between Fifth and Sixth. Both Phones.