

WHEN you need more help  
advertise in THE JOUR-  
NAL'S Help Wanted Columns.

The weather—Fair and cooler to-  
night with light frost.

VOL. VI. NO. 167.

PORTLAND, OREGON, TUESDAY EVENING, SEPTEMBER 17, 1907.—SIXTEEN PAGES.

PRICE TWO CENTS.

ON TRAINS AND NEWS  
STANDS, FIVE CENTS

Journal Circulation

Yesterday  
Was 27,588

# GUN EXPLODES ON JAPANESE BATTLESHIP KILLING AND WOUNDING FORTY-FOUR MEN

## ACCIDENT OCCURS WHEN UNEXPLODED SHELL IS REMOVED

Maneuvers Near Kure End With Most Serious Disaster  
That Has Ever Happened in Time of Peace  
to Warship of the Mikado.

Officials Reluctant to Give Details of Cause and Effect of  
Unfortunate Handling of Shell—Passing  
Room Crew Among Injured.

(United Press Leased Wire.)

Tokio, Sept. 17.—A 12-inch gun on the battleship Kashima exploded during the naval maneuvers near Kure, September 9, killing and injuring 44 members of the crew and seriously damaging the vessel.

The Kashima was commanded by Captain Koizumi. The fatalities include a lieutenant, two cadets and one staff officer.

Details of the accident are lacking, but it is known that the explosion was a terrific one. The explosion followed an attempt to remove an unexploded shell from the gun.

A number of bystanders were mutilated.

The Kashima is the largest battleship ever launched on the Tyne, England.

The Japanese officials were successful in keeping the news from the outside world until today. The navy bureau has been reluctant giving information and has stated that there will be no official report until a thorough investigation has taken place. The shell is believed to have exploded after removal from the gun, and all within the 12-inch gun turret must have met with instant death. Men in the passing-room were probably badly injured by the concussion.

## MOORE MAKES APPEAL TO DEPOSITORS OF BANK

Presents Plan by Which Institution Can Be Reopened—  
Declares That Control by Receiver Will Result  
in a Great Loss to the Depositors.

President W. H. Moore, of the Oregon Trust and Savings Bank, today gave out an important statement to depositors. Through the mail he enclosed a blank form which, signed by the depositor, will authorize Receiver Devin to transfer to the depositor's account the amount of the deposit in bonds of either the Tacoma or Omaha Home Telephone company, and stock in the same company to the amount of one half of the deposit. The printed statement to depositors is as follows:

"We know that you will help us in an effort to reopen the Oregon Trust & Savings Bank."

"There is only one way in which this can be done, and that is to realize on the securities. About \$800,000 of these securities are represented by bonds of the Home Telephone companies. The receiver could only sell these bonds in the local market by making a sacrifice. It would probably take many months for the receiver to realize the face value of these securities by handling them in the ordinary course of business."

"If these bonds can be exchanged at par for deposits the exchange amounts to a sale of the bonds at par. Furthermore, the sale is made now. If all of the bonds were exchanged for deposits the bank would not be in a position to reopen because many of the customers for deposits and the cash on hand and the cash which will be received from the other bank stock sales would be sufficient to put the bank on a sound basis and open its doors."

"The president of the bank, Mr. Moore, has turned over to the receiver lands worth enough to make up any loss that ought to be sustained by reason of bad paper, but if the depositors have to wait until the receiver can realize out of the assets then your dividend will fall very much below the amount due you."

"Value of Telephone Stock. If you are willing to take telephone bonds, you get half as much stock thrown in as a bonus and it is increasing in value every day, so that even if the bonds were not worth par, bonds and stock together which you would get, ought to be worth par. The bank took these bonds intending to sell them through its connections."

"If the bank should open and you care to place your stock and bonds with it for sale, it could in time probably realize more than face for it. It will be absolutely impossible to do anything with the reorganization unless we can make these exchanges. A long-drawn-out receivership would be disastrous to everyone, hence we enclose you a card for your signature if you desire to take telephone bonds for your deposit."

"In Blocks of One Hundred. As the bonds can only be issued in \$100 lots you should fill in the blank left for the amount of bonds subscribed with an amount even in the hundreds. You may mail this when signed to T. C. Devin, receiver."

"If enough of these come in to justify the action, an effort will then be made to procure an order from the court permitting the receiver to make the exchange. If, on the other hand, you desire to subscribe for bank stock for all or part of your deposit, you may use the enclosed blank subscription, sign it and send it to the undersigned, room 7, Lafayette building."

"You must appreciate that while we would like to see you personally about this matter, with 16,000 people to care for it will be impossible to discuss these plans personally. If there is any (Continued on Page Five.)

## PIPE PLANT WILL BUILD IN PORTLAND

Los Angeles Capitalists Are  
Looking Over Ground for  
Purpose of Establishing  
Factory to Manufacture  
Wooden Conduits.

New Concern Would Find  
Large Field of Supply—  
Numerous Local Sawmills  
and Mr Lumber Make  
Conditions Here Ideal.

Two Los Angeles capitalists, R. Lloyd and W. E. Hampton, have been in Portland several days and have practically determined to erect a large wooden pipe factory in this city. They have been going over the ground carefully and have decided that everything is favorable to the location of one of the largest factories on the coast if railroad facilities can be satisfactorily arranged. The new factory would not only supply the water systems of Portland and other Pacific coast cities with wooden pipes but would have the large irrigation area of eastern Oregon, Idaho and Washington to draw trade from. Wooden pipes are used almost exclusively in irrigation projects as they do not rust and in many ways are regarded as more practical.

Yesterday Messrs. Lloyd and Hampton looked over factory sites in the northern part of the city. It is their intention to locate the new proposition on the North Bank road and the Northern Pacific tracks, the only hitch in the location they have selected being the question of the railroad company's building a spur into the factory grounds.

Owing to the recent discoveries of the damage done iron pipes by electrolysis the city water department is greatly interested in the subject of wooden pipes for the city water mains and there is a possibility that if the factory is located here it may find a large market in Portland itself for its output.

The city is experimenting to some extent at present with wood pipe, the new additions to the water system in Montavilla being laid with wooden lined iron conduits.

Owing to the large number of sawmills in and near Portland it is regarded as one of the best places in the country for the location of such an industry. The pipes are made of Oregon fir almost exclusively and of the very finest grade of wood, the material being called by the millmen, being the absolutely "clear" fir. This favorable location would result in lowering largely the cost of the raw material.

There are pipe factories in Seattle and in one or two other Washington cities but they are far behind their orders and are unable to come anywhere near filling the orders with which they are deluged.

## STANDARD'S BOND IS FIXED BY GROSSCUP

Chicago, Sept. 17.—Federal Judge Grosscup today fixed the bond of Standard Oil company in case of appeal from the decision of Judge Landis at \$4,000,000, and \$2,000,000 in the appeal for a writ of superadeas. The Standard Oil company of New Jersey was accepted as surety in both cases.

## APPEALS FOR MONEY TO AID OPERATORS

Washington, Sept. 17.—President Gompers of the American Federation of Labor, today issued an appeal to organized labor throughout the United States for funds for the striking telegraphers.

## FANNIFF FOUND GUILTY BY JURY

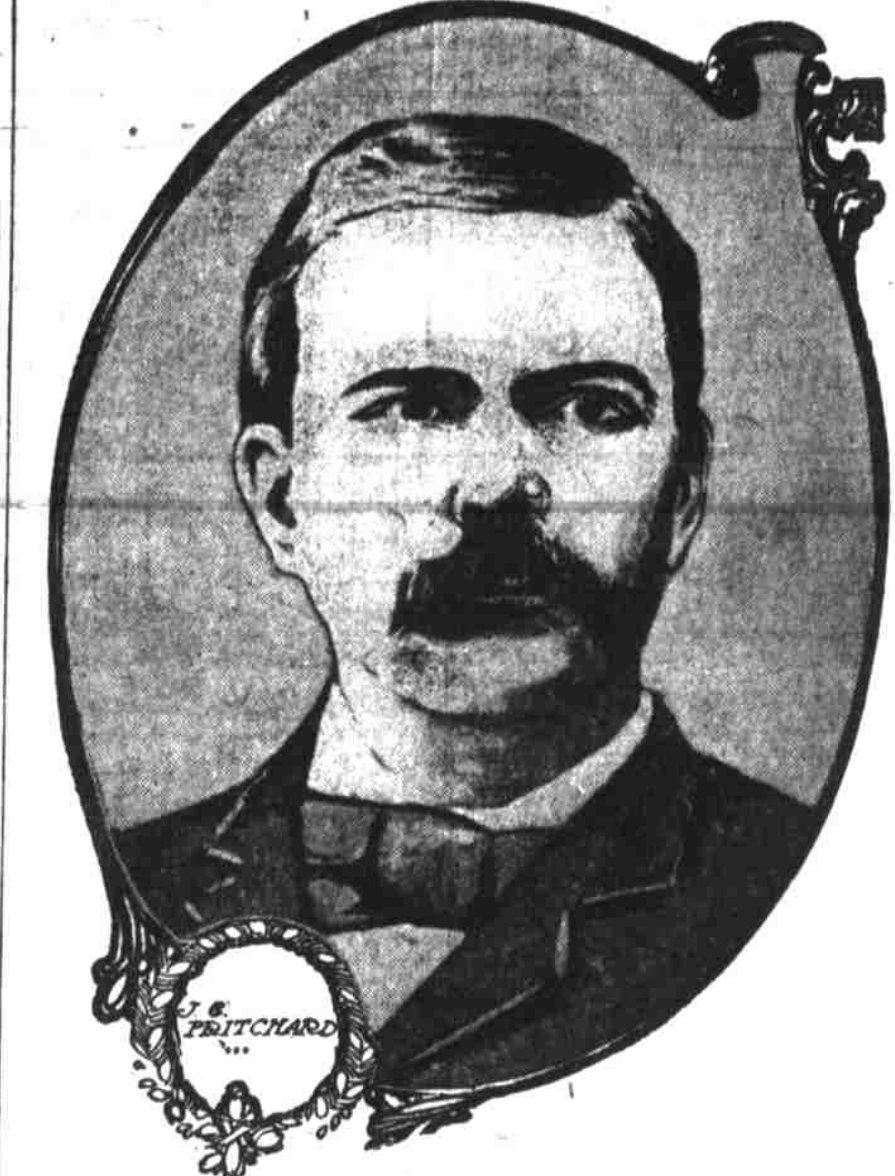
Manslaughter Verdict Returned Against Slayer of James Thompson.

(United Press Leased Wire.)

Wallace, Idaho, Sept. 17.—Joseph Fanniff, who was charged with the murder of James H. Thompson in a saloon near this city, was convicted of manslaughter at 8 o'clock last night. He was convicted on the seventh ballot. Fanniff had engaged in a crap game with Thompson and others, the stake being a dinner for all. When his friends indulged in some pleasantries at his expense, Fanniff became angry and a fight followed in which he was knocked out.

Leaving the saloon the angry man secured a revolver and shot Thompson through the doorway. When informed of what he had done, the defendant wept and denied all knowledge of the affair. Insanity was his defense.

## SOUTHERN RAILROAD APPEALS.



FEDERAL JUDGE, WHO WILL HEAR CORPORATION'S APPLICATION FOR A RESTRAINING ORDER.

Asheville, N. C., Sept. 17.—The application for an order restraining the state courts from taking action in suits brought for recovery of penalties for violation of the rate law will be heard tomorrow by Judge Pritchard of the federal court.

The suit in which the hearing is to be held is that of the appeal of the Southern railway from the \$30,000 fine imposed against that company.

## EXCLUSIONISTS' DEMONSTRATION AMATEUR FIGHTS VIOLATE LAWS

Anti-Asiatics' League Prepares for Big Parade of Members. Board of Supervisors of Bay City Taboo So-Called Boxing Matches.

(Special Dispatch to The Journal.)

Vancouver, B. C., Sept. 17.—The Asiatic Exclusion league is preparing for further demonstrations. The members have issued an ultimatum in which they state that unless the Dominion government adopts some relief measure to restrict immigration steps will be taken by the league to effect it.

Sam Gohard, a prominent member of the organization stated today that there is \$5,000 in the treasury and branches will be established in all cities of British Columbia. Victoria especially desiring deportation to go over from here.

In view of statements made regarding American members of the league, the Vancouver leaders will see to it that no outside city takes part in the next demonstration. They assert that their parade will be held this week, when 5,000 men will be in line.

An international convention, with delegates from all over the northwest will be held next month.

The civic authorities say another parade will not be allowed but the league intends to hold one, and if necessary it will take the matter into the courts.

(Pacific Coast Press Leased Wire.)

San Francisco, Sept. 17.—The police committee of the board of supervisors has put itself formally on record in favor of discouraging hereafter the holding of pugilistic exhibitions, whether they are professional or so-called amateur events.

In a report filed with the board by Chairman Stafford the following statements were made:

"Your committee reports against the retention of Alex Gregorain for permission to conduct a professional exhibition during the month of October, 1907. Your committee is of the opinion that the recent plethora of professional boxing exhibitions running the last few months is all sufficient, and that a month at least might elapse without another occurring in San Francisco."

"Your committee has caused an investigation to be made of the standing of professional and so-called amateur clubs and has found that not one of said clubs complied with the provisions expressed in ordinance number 824 of your honorable board relative to equipment, etc."

"With regard to stores and shops that persist in evading the law fines will be levied ranging from \$25 to \$100 or imprisonment not to exceed 30 days. It will be our aim to close all amusements, race tracks, dancehalls, merry-go-rounds, shows, circuses, variety halls, etc."

"As I said before we will try to prevent Sunday baseball. We did not succeed in doing so in Idaho, but I feel certain we will two years hence."

"In California we will probably ask that confectionery and cigar stores be closed. We did not do so in Idaho because the majority decided that luxuries were a Sabbath necessity. I believe we will do so here."

(Continued on Page Two.)

## MURPHY IS FIGHTING FOR TAMMANY CROWN

New York, Sept. 17.—Primary elections are being held today in Manhattan and the Bronx, on the result of which depends the Tammany leadership. The issue is a sharply drawn one between Charles F. Murphy, the present leader, and Mayor George B. McClellan.

(United Press Leased Wire.)

London, Sept. 17.—The announcement that the Countess of Rosslyn, formerly Miss Annie Robinson the American actress, who recently obtained a Scottish decree of divorce against the earl, is to return to the stage, after her absence of seven years, is made. It has caused a profound sensation in the social life of London, which is still discussing the divorce and the action of the earl in filing an appeal against the decree.

The Scottish decree allows her to retain her title, and members of the peerage are now asking if the American countess, as she is known, will use this title on the playbills in the city where her former husband lives as a peer.

(United Press Leased Wire.)

Renov, Nev., Sept. 17.—The gambling games in the Hub resort are quiet, the five-number combination of the huge steel safe falling to open the doors and divide the \$30,000 placed there at 12 o'clock Saturday night. The game was closed for Sunday. Six experts have been trying to open the doors, but as yet the bankers at the faro game are still idle.

Manager Boardley has offered a reward of \$100 to the man who will open the doors. Boardley states that it is not opened by noon he will have it taken to a safe and blown open with nitro-glycerine.

## TUFTS WILL FIGHT FOR PUT LID ON CALIFORNIA RAILROADS

Business Houses, Saloons, Amusement Places and Baseball Will Fall Under Ban of Sunday Rest Law Planned for Golden State.

Prospective Statute Similar to One in Force in Idaho Will Be Formulated by Superintendent of International Reform Bureau.

Under the auspices of the International Reform bureau, Rev. Mr. G. L. Tufts, Ph. D., is preparing to visit California to carry on an active campaign to secure the passage there of a Sunday rest law similar to the one the bureau succeeded in passing in the state of Idaho at the last session of the legislature of that state. In discussing the matter today Rev. Mr. Tufts said:

"It is not the purpose of the rest law on Sunday to work any hardships. Frequently bodies of merchants get together and discuss closing on this day or that day, but usually there is one or more in the different organizations who, more greedy than the rest, decide to remain open to secure a little trade by such means."

"We intend going before the people of California as we did before the residents of Idaho. We eliminate everything ecclesiastical and the word religion does not figure in the measure in any way, shape or form. It is a proposition pure and simple. In going into California we shall pursue the same policy we did in Idaho, namely, place the matter on a purely physiological basis. We believe that business can be done on the whole six days a week and men who work we contend are entitled to one day's rest in a week of seven days."

Idaho Has Best Law.

"In California as in Idaho the Sunday rest law we will seek to have the legislature pass will embody three salient points. Firstly, business shops must close; secondly, saloons must close; thirdly, public amusements must close. Our aim will be to have a few improvements over the Idaho rest law, one being that we hope to include the carrying of baseball, which is permitted under the Idaho law."

"People generally as well as ministers and those interested in the general uplifting of humanity make no denial of the fact that Idaho today has the best Sunday rest law in the United States. If we secure the passage of a similar law in California it will carry with it a fine of from \$50 to \$500 for any sheriff or county attorney who fails to bring to justice any violator of the law, as well as removal from office for the balance of the term."

Officers Must Enforce Law.

"It will be obligatory on the part of officers of the law to enforce it without their attention being called to its existence. It will be unnecessary for a saloonist to sell liquor to be prosecuted if we are successful. The mere fact that the saloon is open will be the first offense subject the offender to a fine ranging from \$30 to \$250 and imprisonment not to exceed 90 days. For a second offense the guilty saloon-keeper will receive a similar fine and imprisonment and his license will be revoked for a period of two years."

"With regard to stores and shops that persist in evading the law fines will be levied ranging from \$25 to \$100 or imprisonment not to exceed 30 days. It will be our aim to close all amusements, race tracks, dancehalls, merry-go-rounds, shows, circuses, variety halls, etc."

"As I said before we will try to prevent Sunday baseball. We did not succeed in doing so in Idaho, but I feel certain we will two years hence."

"In California we will probably ask that confectionery and cigar stores be closed. We did not do so in Idaho because the majority decided that luxuries were a Sabbath necessity. I believe we will do so here."

(Continued on Page Two.)

## MYSTERY SURROUNDS DEFENSE OF HICKS

Wallace, Ida., Sept. 17.—The trial of Carson Hicks, deputy sheriff of Shoshone county and county jailer, for the murder of William Quinn, ex-chief of police of Wallace, began here today.

The murder occurred in a saloon last April. Quinn and H. W. C. Jackson, a local newspaper publisher, became involved in a dispute over the Steunberger mine.

Jackson was ordered out of the saloon in which the dispute took place, but a few minutes later accompanied by Hicks, Quinn invited both to have a drink, but Hicks, without apparent provocation, it is stated, drew a revolver and shot Quinn dead. The basis on which the case will be defended has never been made public.

## RENO GAMBLING IS DELAYED BY LOCK

(United Press Leased Wire.)

Renov, Nev., Sept. 17.—The gambling games in the Hub resort are quiet, the five-number combination of the huge steel safe falling to open the doors and divide the \$30,000 placed there at 12 o'clock Saturday night. The game was closed for Sunday. Six experts have been trying to open the doors, but as yet the bankers at the faro game are still idle.

Manager Boardley has offered a reward of \$100 to the man who will open the doors. Boardley states that it is not opened by noon he will have it taken to a safe and blown open with nitro-glycerine.

Valley Mills Would Be Completely Shut Out From California and Eastern Markets Under New Tariff—Will Bring Suit.

Unfairness Against Manufacturers of Lumber Doing Business on East Side Escape Tax While West Side Is Made to Suffer.

Lumber mill manufacturers of the Willamette valley will bring suit in the United States court to enjoin the transcontinental lines from putting into effect the new freight rate schedules just filed at Washington. In these schedules there has been made by the railroad traffic chiefs a singular blunder that will, it is said, prove to be the salvation of Willamette valley lumber mills, as it will afford ground for proving the new freight schedules to be illegal discrimination. The schedules impose a different rate upon mills at the same point of location.

Owing to conflicting statements published, the figures have been somewhat confused. A lumberman who has made a study of the rates explained that the increase amounts to an additional burden of \$1.65 per 1,000 feet to be borne by the Willamette valley lumber manufacturer who ships lumber to Salt Lake and Denver territory, and double that amount on shipments he makes to Missouri river territory. One of the peculiar results of the new rate schedule is that the rates on the transcontinental lines from putting into effect the new freight rate schedules just filed at Washington. In these schedules there has been made by the railroad traffic chiefs a singular blunder that will, it is said, prove to be the salvation of Willamette valley lumber mills, as it will afford ground for proving the new freight schedules to be illegal discrimination. The schedules impose a different rate upon mills at the same point of location.

Owing to conflicting statements published, the figures have been somewhat confused. A lumberman who has made a study of the rates explained that the increase amounts to an additional burden of \$1.65 per 1,000 feet to be borne by the Willamette valley lumber manufacturer who ships lumber to Salt Lake and Denver territory, and double that amount on shipments he makes to Missouri river territory. One of the peculiar results of the new rate schedule is that the rates on the transcontinental lines from putting into effect the new freight rate schedules just filed at Washington. In these schedules there has been made by the railroad traffic chiefs a singular blunder that will, it is said, prove to be the salvation of Willamette valley lumber mills, as it will afford ground for proving the new freight schedules to be illegal discrimination. The schedules impose a different rate upon mills at the same point of location.

Owing to conflicting statements published, the figures have been somewhat confused. A lumberman who has made a study of the rates explained that the increase amounts to an additional burden of \$1.65 per 1,000 feet to be borne by the Willamette valley lumber manufacturer who ships lumber to Salt Lake and Denver territory, and double that amount on shipments he makes to Missouri river territory. One of the peculiar results of the new rate schedule is that the rates on the transcontinental lines from putting into effect the new freight rate schedules just filed at Washington. In these schedules there has been made by the railroad traffic chiefs a singular blunder that will, it is said, prove to be the salvation of Willamette valley lumber mills, as it will afford ground for proving the new freight schedules to be illegal discrimination. The schedules impose a different rate upon mills at the same point of location.

Owing to conflicting statements published, the figures have been somewhat confused. A lumberman who has made a study of the rates explained that the increase amounts to an additional burden of \$1.65 per 1,000 feet to be borne by the Willamette valley lumber manufacturer who ships lumber to Salt Lake and Denver territory, and double that amount on shipments he makes to Missouri river territory. One of the peculiar results of the new rate schedule is that the rates on the transcontinental lines from putting into effect the new freight rate schedules just filed at Washington. In these schedules there has been made by the railroad traffic chiefs a singular blunder that will, it is said, prove to be the salvation of Willamette valley lumber mills, as it will afford ground for proving the new freight schedules to be illegal discrimination. The schedules impose a different rate upon mills at the same point of location.

Owing to conflicting statements published, the figures have been somewhat confused. A lumberman who has made a study of the rates explained that the increase amounts to an additional burden of \$1.65 per 1,000 feet to be borne by the Willamette valley lumber manufacturer who ships lumber to Salt Lake and Denver territory, and double that amount on shipments he makes to Missouri river territory. One of the peculiar results of the new rate schedule is that the rates on the transcontinental lines from putting into effect the new freight rate schedules just filed at Washington. In these schedules there has been made by the railroad traffic chiefs a singular blunder that will, it is said, prove to be the salvation of Willamette valley lumber mills, as it will afford ground for proving the new freight schedules to be illegal discrimination. The schedules impose a different rate upon mills at the same point of location.

Owing to conflicting statements published, the figures have been somewhat confused. A lumberman who has made a study of the rates explained that the increase amounts to an additional burden of \$1.65 per 1,000 feet to be borne by the Willamette valley lumber manufacturer who ships lumber to Salt Lake and Denver territory, and double that amount on shipments he makes to Missouri river territory. One of the peculiar results of the new rate schedule is that the rates on the transcontinental lines from putting into effect the new freight rate schedules just filed at Washington. In these schedules there has been made by the railroad traffic chiefs a singular blunder that will, it is said, prove to be the salvation of Willamette valley lumber mills, as it will afford ground for proving the new freight schedules to be illegal discrimination. The schedules impose a different rate upon mills at the same point of location.

Owing to conflicting statements published, the figures have been somewhat confused. A lumberman who has made a study of the rates explained that the increase amounts to an additional burden of \$1.65 per 1,000 feet to be borne by the Willamette valley lumber manufacturer who ships lumber to Salt Lake and Denver territory, and double that amount on shipments he makes to Missouri river territory. One of the peculiar results of the new rate schedule is that the rates on the transcontinental lines from putting into effect the new freight rate schedules just filed at Washington. In these schedules there has been made by the railroad traffic chiefs a singular blunder that will, it is said, prove to be the salvation of Willamette valley lumber mills, as it will afford ground for proving the new freight schedules to be illegal discrimination. The schedules impose a different rate upon mills at the same point of location.

Owing to conflicting statements published, the figures have been somewhat confused. A lumberman who has made a study of the rates explained that the increase amounts to an additional burden of \$1.65 per 1,000 feet to be borne by the Willamette valley lumber manufacturer who ships lumber to Salt Lake and Denver territory, and double that amount on shipments he makes to Missouri river territory. One of the peculiar results of the new rate schedule is that the rates on the transcontinental lines from putting into effect the new freight rate schedules just filed at Washington. In these schedules there has been made by the railroad traffic chiefs a singular blunder that will, it is said, prove to be the salvation of Willamette valley lumber mills, as it will afford ground for proving the new freight schedules to be illegal discrimination. The schedules impose a different rate upon mills at the same point of location.

Owing to conflicting statements published, the figures have been somewhat confused. A lumberman who has made a study of the rates explained that the increase amounts to an additional burden of \$1.65 per 1,000 feet to be borne by the Willamette valley lumber manufacturer who ships lumber to Salt Lake and Denver territory, and double that amount on shipments he makes to Missouri river territory. One of the peculiar results of the new rate schedule is that the rates on the transcontinental lines from putting into effect the new freight rate schedules just filed at Washington. In these schedules there has been made by the railroad traffic chiefs a singular blunder that will, it is said, prove to be the salvation of Willamette valley lumber mills, as it will afford ground for proving the new freight schedules to be illegal discrimination. The schedules impose a different rate upon mills at the same point of location.

Owing to conflicting statements published, the figures have been somewhat confused. A lumberman who has made a study of the rates explained that the increase amounts to an additional burden of \$1.65 per 1,000 feet to be borne by the Willamette valley lumber manufacturer who ships lumber to Salt Lake and Denver territory, and double that amount on shipments he makes to Missouri river territory. One of the peculiar results of the new rate schedule is that the rates on the transcontinental lines from putting into effect the new freight rate schedules just filed at Washington. In these schedules there has been made by the railroad traffic chiefs a singular blunder that will, it is said, prove to be the salvation of Willamette valley lumber mills, as it will afford ground for proving the new freight schedules to be illegal discrimination. The schedules impose a different rate upon mills at the same point of location.

Owing to conflicting statements published, the figures have been somewhat confused. A lumberman who has made a study of the rates explained that the increase amounts to an additional burden of \$1.65 per 1,000 feet to be borne by the Willamette valley lumber manufacturer who ships lumber to Salt Lake and Denver territory, and double that amount on shipments he makes to Missouri river territory. One of the peculiar results of the new rate schedule is that the rates on the transcontinental lines from putting into effect the new freight rate schedules just filed at Washington. In these schedules there has been made by the railroad traffic chiefs a singular blunder that will, it is said, prove to be the salvation of Willamette valley lumber mills, as it will afford ground for proving the new freight schedules to be illegal discrimination. The schedules impose a different rate upon mills at the same point of location.

Owing to conflicting statements published, the figures have been somewhat confused. A lumberman who has made a study of the rates explained that the increase amounts to an additional burden of \$1.65 per 1,000 feet to be borne by the Willamette valley lumber manufacturer who ships lumber to Salt Lake and Denver territory, and double that amount on shipments he makes to Missouri river territory. One of the peculiar results of the new rate schedule is that the rates on the transcontinental lines from putting into effect the new freight rate schedules just filed at Washington. In these schedules there has been made by the railroad traffic chiefs a singular blunder that will, it is said, prove to be the salvation of Willamette valley lumber mills, as it will afford ground for proving the new freight schedules to be illegal discrimination. The schedules impose a different rate upon mills at the same point of location.

Owing to conflicting statements published, the figures have been somewhat confused. A lumberman who has made a study of the rates explained that the increase amounts to an additional burden of \$1.65 per 1,000 feet to be borne by the Willamette valley lumber manufacturer who ships lumber to Salt Lake and Denver territory, and double that amount on shipments he makes to Missouri river territory. One of the peculiar results of the new rate schedule is that the rates on the transcontinental lines from putting into effect the new freight rate schedules just filed at Washington. In these schedules there has been made by the railroad traffic chiefs a singular blunder that will, it is said, prove to be the salvation of Willamette valley lumber mills, as it will afford ground for proving the new freight schedules to be illegal discrimination. The schedules impose a different rate upon mills at the same point of location.

Owing to conflicting statements published, the figures have been somewhat confused. A lumberman who has made a study of the rates explained that the increase amounts to an additional burden of \$1.65 per 1,000 feet to be borne by the Willamette valley lumber manufacturer who ships lumber to Salt Lake and Denver territory, and double that amount on shipments he makes to Missouri river territory. One of the peculiar results of the new rate schedule is that the rates on the transcontinental lines from putting into effect the new freight rate schedules just filed at Washington. In these schedules there has been made by the railroad traffic chiefs a singular blunder that will, it is said, prove to be the salvation of Willamette valley lumber mills, as it will afford ground for proving the new freight schedules to be illegal discrimination. The schedules impose a different rate upon mills at the same point of location.

Owing to conflicting statements published, the figures have been somewhat confused. A lumberman who has made a study of the rates explained that the increase amounts to an additional burden of \$1.65 per 1,000 feet to be borne by the Willamette valley lumber manufacturer who ships lumber to Salt Lake and Denver territory, and double that amount on shipments he makes to Missouri river territory. One of the peculiar results of the new rate schedule is that the rates on the transcontinental lines from putting into effect the new freight rate schedules just filed at Washington. In these schedules there has been made by the railroad traffic chiefs a singular blunder that will, it is said, prove to be the salvation of Willamette valley lumber mills, as it will afford ground for proving the new freight schedules to be illegal discrimination. The schedules impose a different rate upon mills at the same point of location.

Owing to conflicting statements published, the figures have been somewhat confused. A lumberman who has made a study of the rates explained that the increase amounts to an additional burden of \$1.65 per 1,000 feet to be borne by the Willamette valley lumber manufacturer who ships lumber to Salt Lake and Denver territory, and double that amount on shipments he makes to Missouri river territory. One of the peculiar results of the new rate schedule is that the rates on the transcontinental lines from putting into effect the new freight rate schedules just filed at Washington. In these schedules there has been made by the railroad traffic chiefs a singular blunder that will, it is said, prove to be the salvation of Willamette valley lumber mills, as it will afford ground for proving the new freight schedules to be illegal discrimination. The schedules impose a different rate upon mills at the same point of location.

Owing to conflicting statements published, the figures have been somewhat confused. A lumberman who has made a study of the rates explained that the increase amounts to an additional burden of \$1.65 per 1,000 feet to be borne by the Willamette valley lumber manufacturer who ships lumber to Salt Lake and Denver territory, and double that amount on shipments he makes to Missouri river territory. One of the peculiar results of the new rate schedule is that the rates on the transcontinental lines from putting into effect the new freight rate schedules just filed at Washington. In these schedules there has been made by the railroad traffic chiefs a singular blunder that will, it is said, prove to be the salvation of Willamette valley lumber mills, as it will afford ground for proving the new freight schedules to be illegal discrimination. The schedules impose a different rate upon mills at the same point of location.

Owing to conflicting statements published, the figures have been somewhat confused. A lumberman who has made a study of the rates explained that the increase amounts to an additional burden of \$1.65 per 1,000 feet to be borne by the Willamette valley lumber manufacturer who ships lumber to Salt Lake and Denver territory, and double that amount on shipments he makes to Missouri river territory. One of the peculiar results of the new rate schedule is that the rates on the transcontinental lines from putting into effect the new freight rate schedules just filed at Washington. In these schedules there has been made by the railroad traffic chiefs a singular blunder that will, it is said, prove to be the salvation of Willamette valley lumber mills, as it will afford ground for proving the new freight schedules to be illegal discrimination. The schedules impose a different rate upon mills at the same point of location.

Owing to conflicting statements published, the figures have been somewhat confused. A lumberman who has made a study of the rates explained that the increase amounts to an additional burden of \$1.65 per 1,000 feet to be borne by the Willamette valley lumber manufacturer who ships lumber to Salt Lake and Denver territory, and double that amount on shipments he makes to Missouri river territory. One of the peculiar results of the new rate schedule is that the rates on the transcontinental lines from putting into effect the new freight rate schedules just filed at Washington. In these schedules there has been made by the railroad traffic chiefs a singular blunder that will, it is said, prove to be the salvation of Willamette valley lumber mills, as it will afford ground for proving the new freight schedules to be illegal discrimination. The schedules impose a different rate upon mills at the same point of location.

Owing to conflicting statements published, the figures have been somewhat confused. A lumberman who has made a study of the rates explained that the increase amounts to an additional burden of \$1.65 per 1,000 feet to be borne by the Willamette valley lumber manufacturer who ships lumber to Salt Lake and Denver territory, and double that amount on shipments he makes to Missouri river territory. One of the peculiar results of the new rate schedule is that the rates on the transcontinental lines from putting into effect the new freight rate schedules just filed at Washington. In these schedules there has been made by the railroad traffic chiefs a singular blunder that will, it is said, prove to be the salvation of Willamette valley lumber mills, as it will afford ground for proving the new freight schedules to be illegal discrimination. The schedules impose a different rate upon mills at the same point of location.

Owing to conflicting statements published, the figures have been somewhat confused. A lumberman who has made a study of the rates explained that the increase amounts to an additional burden of \$1.65 per 1,000 feet to be borne by the Willamette valley lumber manufacturer who ships lumber to Salt Lake and Denver territory, and double that amount on shipments he makes to Missouri river territory. One of the peculiar results of the new rate schedule is that the rates on the transcontinental lines from putting into effect the new freight rate schedules just filed at Washington. In these schedules there has been made by the railroad traffic chiefs a singular blunder that will, it is said, prove to be the salvation of Willamette valley lumber mills, as it will afford ground for proving the new freight schedules to be illegal discrimination. The schedules impose a different rate upon mills at the same point of location.

## PLUMBERS ARE TO EXPLAIN BOYCOTT

(Pacific Coast Press Leased Wire.)

San Francisco, Cal., Sept. 17.—The opening guns of the attorneys for the John Douglas company of Cincinnati, which claims that its goods are