

All Agreements Contingent upon
Strikes, Accidents or Other
Causes of Delay Beyond My
Control.

J. G. KILLGREEN

General
Contractor and
Builder



JOBGING PROMPTLY
ATTENDED TO

Office 720 Chamber of Commerce
Phone Main 5101.
Shop 402 Glisan Street.
PORTLAND, OREGON.

**Wakefield,
Fries & Co.**

(Incorporated)

REAL ESTATE
LOANS
AND
RENTALS



No. 229 Stark Street
Portland, Oregon

D. W. WAKEFIELD, President
HENRY W. FRIES
Vice-President and Treasurer
S. H. GUILD, Secretary

**You Hit the
Bullseye**

When you buy a lot, block or
acre between the rivers. I have
hammered this truth—likewise
comfortable fortunes, some large,
some modest—into hundreds of
pates, the 25 years that I have
been selling real estate in Port-
land. I have said to thousands,

**Plant Your Money in
Peninsula Property
and the Investment
Will Make You Rich**

It was true when I said it first—
a quarter of a century ago—it is
as true today. A mighty city is
building on the east side of the
Willamette. Its real estate is ad-
vancing every hour, and

**My Walnut Park Lots
Are the Best Buy Today on
the Pacific Coast**

Call on or write

W. M. Killingsworth

303 Chamber of Commerce.
Or Walnut Park. Portland, Or.

PORTLAND, OREGON

Offers Today the Best Opportunity for

Real Estate Investments
OF ANY PACIFIC COAST CITY

Its land values are on a safer basis.
Its percentage of building increase is phenomenal.
Its manufacturing interests are extending greater than any other.
Its prospects for the future are unequalled.
OREGON has more standing timber and more varied resources
than any other state in the union.
Invest here and share in our prosperity.
For mortgage loans investors can find no safer field.
Non resident owners can rely on their interests being carefully
looked after.
Correspondence solicited—I have been established in business
over 20 years in Portland.
References.—Any bank in the city.

A. H. BIRRELL

Real Estate and Financial Agent

Suite 201-203 McKay Building, Third and Stark,
PORTLAND OREGON

**Farms and City Property
Bought and Sold**

The most complete list of farms on the Pacific coast can be
found in this office for sale at low prices—locations to suit the
buyer. Also terms. Our 30 years in business here gives us an
advantage over others, as we are conversant with the whole
country—Oregon and Washington—and won't ask you to buy
unless suited. Send for list.

W. W. Espey & Co.

Room 319 Commercial Building, Cor. Second and Washington
Sts., Portland, Or.

**Better Than
a
Gold Mine**

346 acres of the finest farm
land in the country, less than 40
miles from Portland; 140 acres
in cultivation, on the river, on
the railroad, also on the survey
of the Seattle-Portland electric
line. Two good houses, one fur-
nished, brick and stone dairy
building, 2 large barns, machine
shed; water in all the buildings.
One threshing machine and en-
gine, and all other implements
necessary to run a farm; market
for all you can raise right at
your door, saving all freight
charges. Also one million feet
of fir timber besides six to seven
hundred cords of oak and ash
wood. Call and we will take you
to see it—we are ashamed to ad-
vertise the price it can be bought
for, as it is a gift.

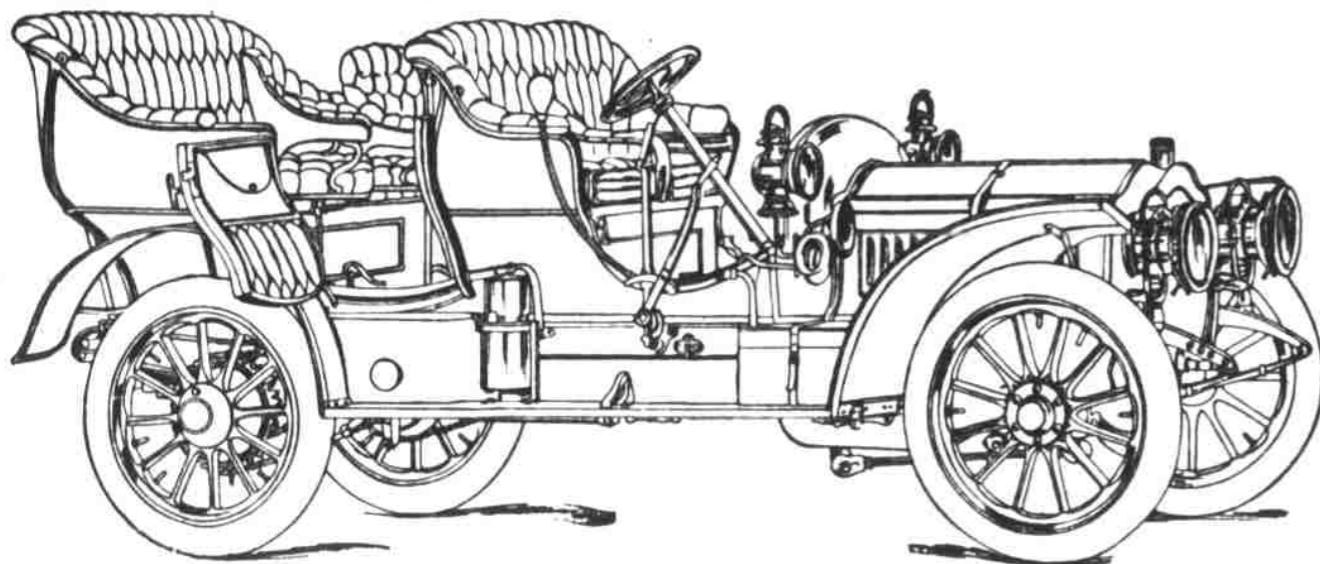
**COMMERCIAL
INVESTMENT
COMPANY**

D. B. Mackie, Manager.
330-331-332 Lumber Exchange
Building.

TRY US
for
**Real Estate
Investments
Warehouse
or Residence
Sites
and Oregon
Timber
Lands**

Jackson & Deering

246 Stark Street
Portland,
Or.



60 H.-P. THOMAS FLYER, \$4,000 F. O. B. FACTORY.

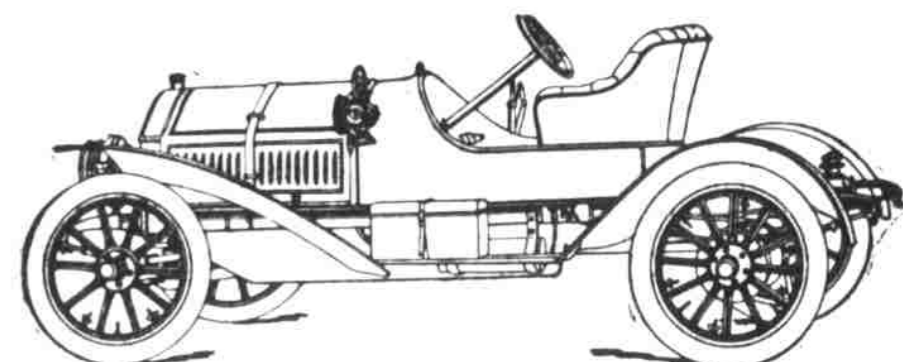
Big not in mere size, but in the policy that dictates its construction.
Big in the insistence that demands the costliest materials made.
Big in the scrupulous attention to the hundred and one little refinements that go to make up a harmonious
whole.
Big in the policy that gathers together the largest corps of American and European engineering experts as-
sociated in one factory.
Big in records and tests that make for reliability—the most remarkable collection ever won by any car in
one season.
This car is replete with surprises! Far and away the richest-looking car in its class — and this high-grade
goodness obtains in every ounce of metal in its makeup and every mechanical detail that enters into its construc-
tion.

Just as Sure as You Live
The Thomas Flyer Will Get You There First
It Is "The Biggest Little Car" on Earth

"The Biggest Big Car"
The 60 H.-P. Thomas Flyer
\$4000 F. O. B. Factory

H. L. Keats Auto Co.

Northwestern Distributors—Pope-Toledo, Pope-Hartford,
Thomas Flyer, Buick, Oldsmobile and Franklin.
Agencies—Tacoma, Seattle, Spokane and All Important
Centers.



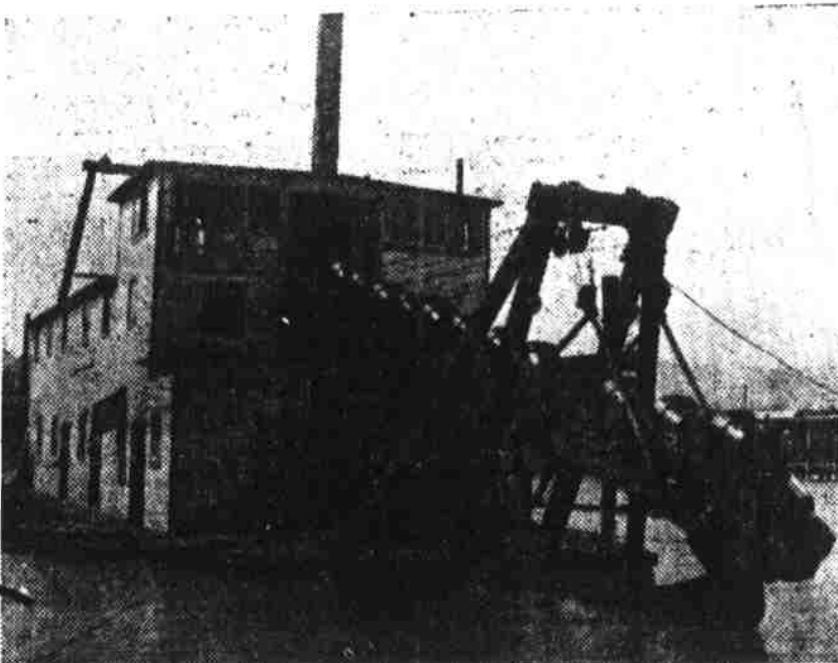
THOMAS FORTY ROADSTER 40 H.-P., \$2,750 F. O. B. FACTORY.

THE THOMAS FORTY
40 H.-P. \$2750 F. O. B. Factory

"The biggest little car" as applied to the Thomas Forty is something much
more than a mere clever catch-phrase.
It is a literal statement of the actual truth.
The Thomas Forty possesses two essentials of "bigness" which set it in a
class by itself.
It has the biggest wheel base and the biggest horse-power possessed by any
car in America of the same approximate price.
In every part, point and detail of its construction the same policy prevails
—always a little more, a little better than your fondest dreams could hope for.
You will most appreciate the Thomas Forty if you consider it in
comparison with other cars of approximate price, or costing considerably more.

Hammond Manufacturing Co.

Incorporated



**Mining
Machinery
Rock Drills
Air Compressors
Gold Dredges
Harbor Dredges
Steam Scrapers**

Write for Catalogues and
Prices

PORTLAND, OREGON

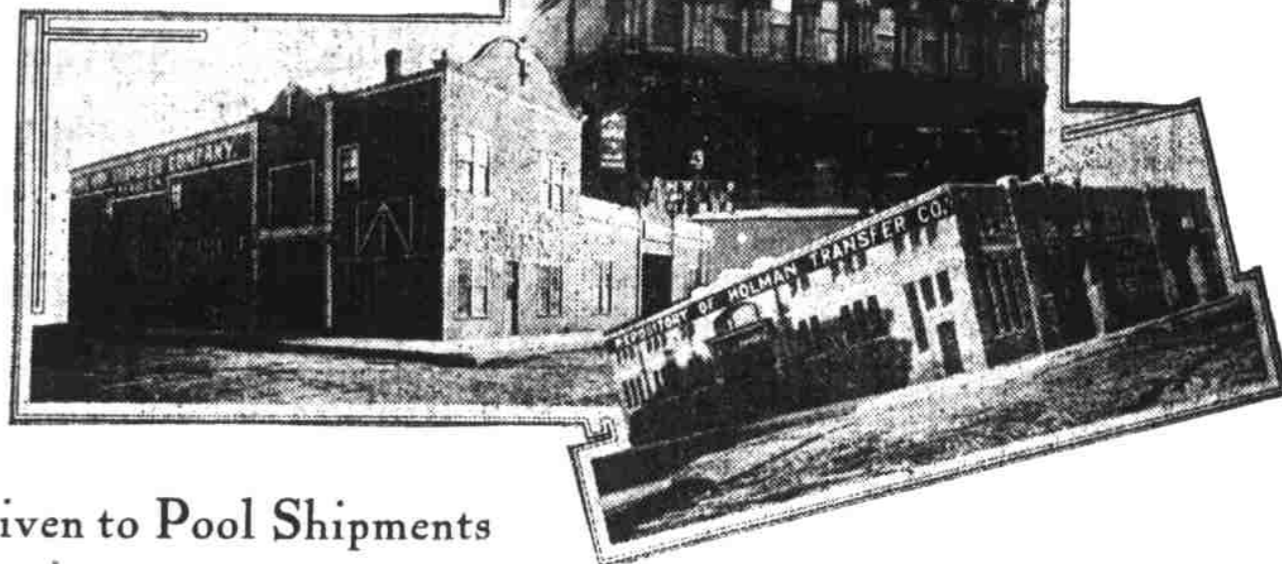
Offices and Storehouses
of the

Holman Transfer Company

Headquarters, 8, 10 and 12 Front Street

Draying, Forwarding and Storage
Portland, Oregon

Unsurpassed facili-
ties for the prompt
transfer of all classes
of freight. Heaviest
castings or the most
delicate merchandise
have the same quick
and careful attention



S. W. Herrman
President

Established
1864

Incorporated
1900

Phone Main
157

Special Attention Given to Pool Shipments

"As the Valley So the Brew"

Enterprise Brewing Company's

Yosemite
Lager Beer and Porter

Office and Cold Storage, Corner Thirteenth and Johnson Streets
C. B. WILLIAMS, Agent

