

PORTLAND & THE METROPOLIS

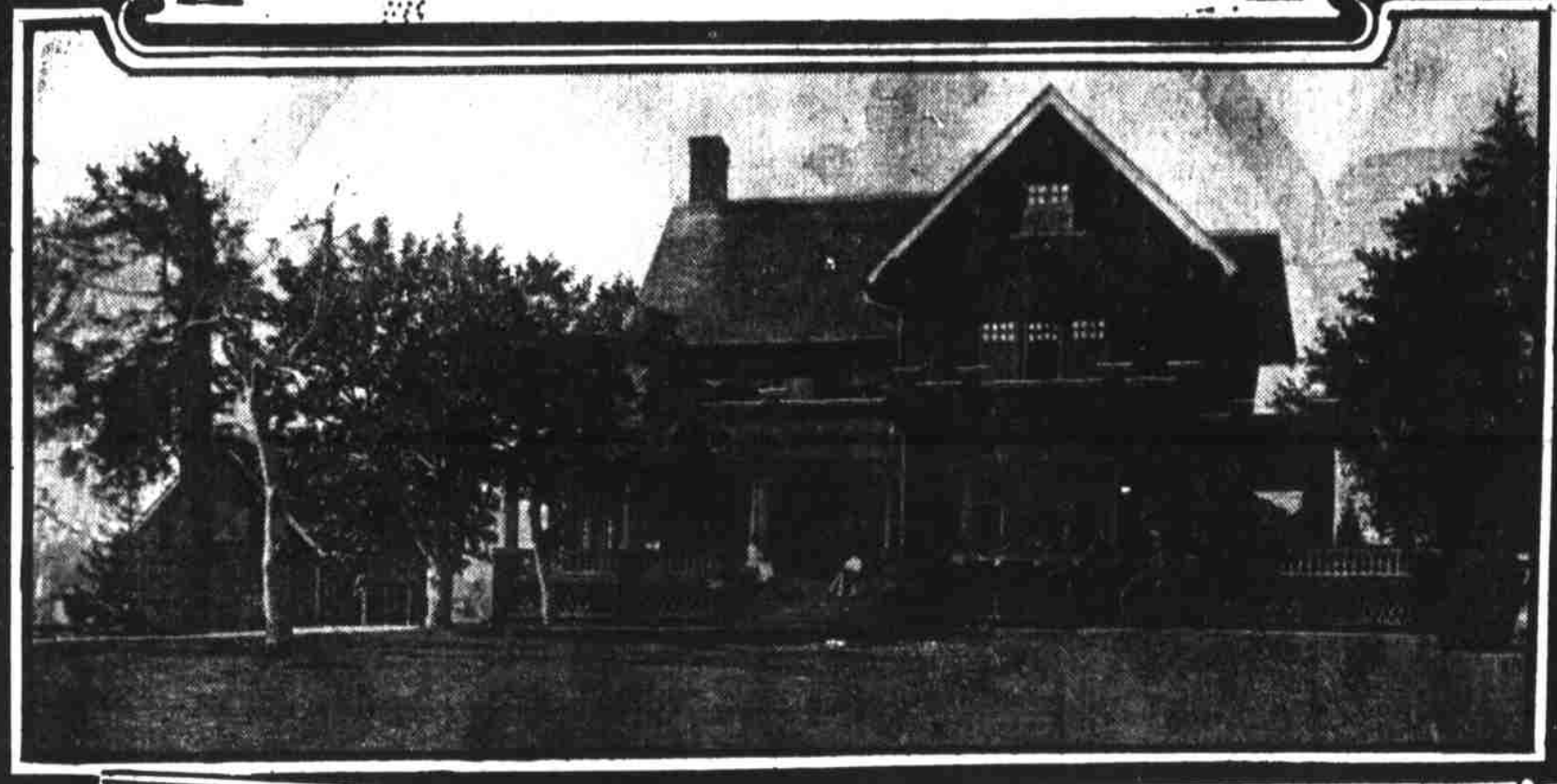
OF THE OREGON COUNTRY



WINTER CUT ROSES FROM THE SIBSON ROSE NURSERIES



MAYOR LANE



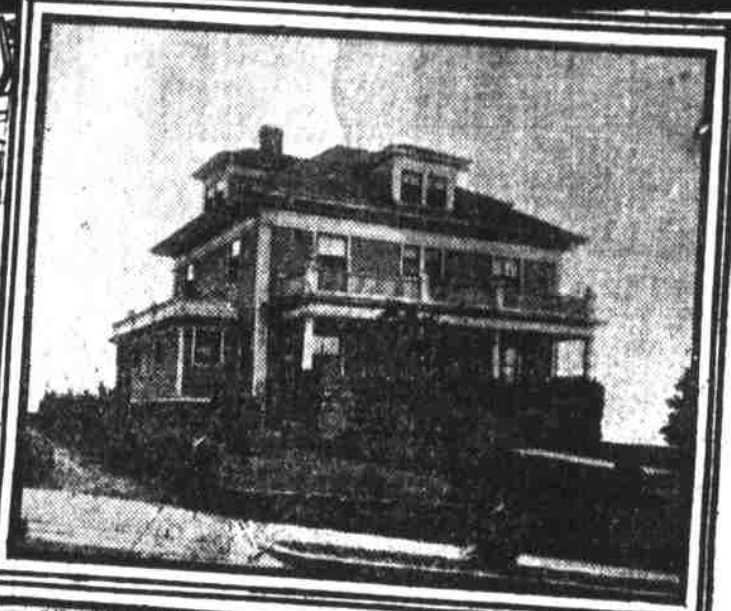
RESIDENCE OF WILL REID GREEN GABLES



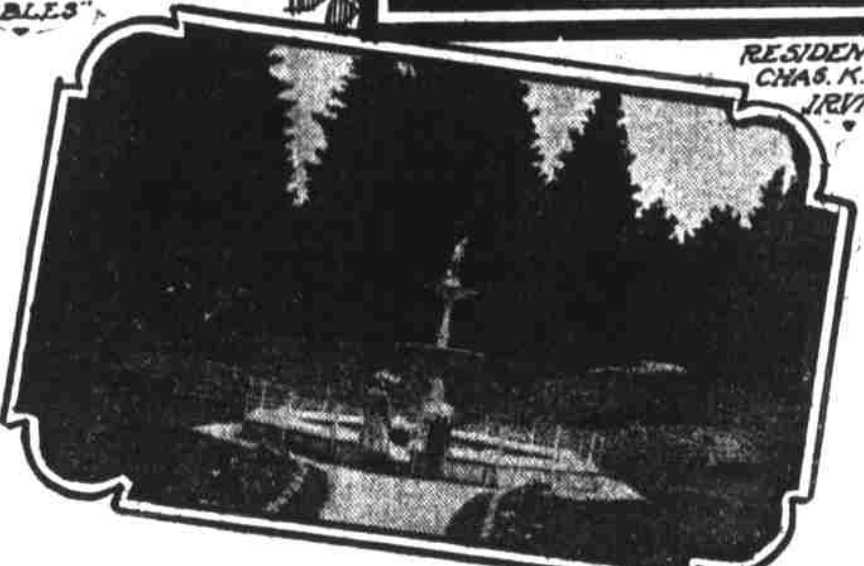
RESIDENCE OF CHAS. K. HENRY IRVINGTON



A FEW HOURS RIDE FROM PORTLAND



RESIDENCE OF A. H. BIRRELL



SCENE IN CITY PARK

CITIES are alike, as people are; like individuals, no two are alike. Each has its peculiar features, characteristics, reputation, character. So Portland is like all cities; yet is like none. Every city is different; Portland is more different than most.

Though never appropriating the phrase, Portland is veritably a city of destiny. The Almighty made here a place for a great city; it was a part of his handiwork that was "very good." People are gradually, surely, now not slowly, doing their part. When nature and man work in harmony, nothing shall withstand them.

The first important factor in the making of a great city is situation with respect to a resourceful surrounding country and avenues and facilities for trade and commerce. In this respect Portland occupies the most advantageous position on the Pacific coast. It is at the head of navigation for ocean-going vessels, and practically at the junction of two rivers, one the largest on the Pacific coast, to be navigable for hundreds of miles into the interior, the other for 100 miles up the center of the great Willamette valley. To this point, by down-grade, water-level routes, railroads do and must still more converge, conveying along with fleets of river steamers, the products of most of Oregon and much of Washington and Idaho, an area of some 200,000 square miles—grain, fruits, livestock, minerals, timber, hops, wool, etc.—in vast and constantly increasing quantities.

Here, geographically, Portland sits supreme, unrivaled, throughout all this wide expanse of immensely resourceful country—a region that could easily support 10,000,000 people, and that is naturally tributary, to use the ordinary commercial term, to this city.

A Favored Seaport.

For observe, this situs includes the fact of a seaport, and better still, a

BULL RUN RIVER, SOURCE OF PORTLAND'S MAGNIFICENT WATER SUPPLY

support 100 miles inland. This, an ample river channel being assured, is doubly advantageous, because, first, water carriage being cheaper than land carriage, ships always seek the head of navigable waters; and, second, in a fresh water harbor the foul bottoms of ships are cleaned without cost, and the devastating teredo is absent. The Creator, kindly—since battle cultus is necessary for man's development left him some work to do in deepening channels and digging canals. He is doing this, and will thus make Portland a more favored seaport than San Francisco or Seattle.

RESIDENCE OF E. W. KING

all the extensive region round about and with the seaports of the world.

Great Growth.

This is not theory, or a picture, but an actuality, and is to be more and more so. The proof is manifold on all hands. Figures that would fill this column, but that must be sought elsewhere, tell the wonderful story of Portland's growing greatness and glowing prospects. Portland is the greatest lumber exporting port in the world, and in wheat exports is excelled by but two or three. It will soon be second or not less than third in the meat packing industry. Its

ness. Many important and increasing manufactures. Fine churches and public and private schools. Complete system of city and suburban electric transportation, and extensive electric lines being constructed and projected. Best city water in the world, helping to make Portland about the healthiest city in the world, the death rate being only 8.5 per thousand.

Portland is not a frontier, or rough-and-rude town. It is as civilized as Boston—and not so chilly. It is go-ahead-alive, but conservative; enterprising, but solid. No earthquakes or big boodlers. Nothing to be afraid of, and less than most cities to be ashamed of. Standard of intelligence high; people inclined to be politically independent.

A City Beautiful.

Portland is a beautiful city. Again, the Creator was generous—lavish in raw material for the ideal City Beautiful. Globe-trotters pronounce it unrivaled for beauty of site and scenery. Good judges say it can be made the most beautiful city in the world, and steps are being taken to make it so. Millions will be expended on streets, boulevards and parks.

Portland has a site of nearly 50 square miles, through which flows the Willamette river. A concave cordon of evergreen hills form its western boundary. Eastward, with scarcely perceptible slope, extends the landscape of fields and woods to the Cascades, five of whose snow-peaks are visible from the city's western hill borders; Hood, directly east, towering most pronouncedly; picture-que, gigantic, pleasurable awesome, optically 20 miles distant, really 60.

Trees and all kinds of ornamental and flowering shrubbery grow luxur-

iantly in Portland. Many residence districts are park-like. It is a city of beautiful homes. Foliage and flowerage revel in vigorous display. The summer glory of Portland renders descriptions of Paradise stale, flat and unprofitable.

Portland is the Rose City. In a richly emerald field roses appear through most of the year, but particularly from May to October, inclusive, lavishly luxuriant, exuberantly prolific, in all hues conceivable, in number myriad, bestowing upon it a beauty and through wafting breezes bathing it in a fragrance that bear upon the people pleasantly the sense of purity and sweetness that a dreaming theories we connect with the realm celestial.

Around, sea, mountains, wide plains and valleys, great production, limitless resources; hitherward, converging means of transportation; here, great and rapidly growing business, unbuilding, development; mild and healthful climate, beautiful scenery, enterprising, progressive people.

So sits Portland, like, and unlike; similar, but peculiar; smilingly and confidently offering and pointing, thousand-handed, to the doors ajar of Opportunity.

Portland's assessment shows her to be the richest and most prosperous in the northwestern portion of the United States and Canada, with an assessed valuation of \$200,000,000, being \$50,000,000 more than that of any other city in this part of the country.

Portland leads all the cities in the United States north of San Francisco and west of Minneapolis in school population, postal receipts, wholesale trade, exportation of wheat and flour, and distribution of agricultural implements.

Portland has the only fresh water harbor on the Pacific Coast. It is the only city with water grade connection with Eastern Oregon, Washington and Idaho.

Portland is the largest city in area north of Los Angeles, covering 44 square miles. In population, the largest in the Northwest.

Portland has the only first-class postoffice north of San Francisco. Its receipts during the past year were in excess of \$550,000.

Portland's manufacturing industries represent an invested capital of more than \$32,000,000, with an annual output exceeding \$55,000,000.

Portland has two telephone companies, and more phones in proportion to its population than any other city in the world.

Portland's bank deposits in 1906 aggregated \$61,250,000. Bank clearings during the same period amounted to \$281,170,796.

Portland is the gateway and distributing center of 250,000 square miles of territory, the largest contributive district of any city in the Union.

Portland shipped more wheat in April than all other cities on the Pacific Coast combined, outdistanced only by New York City.

Portland's total imports from foreign countries last year amounted to \$3,209,000; its exports amounted to \$11,000,000.