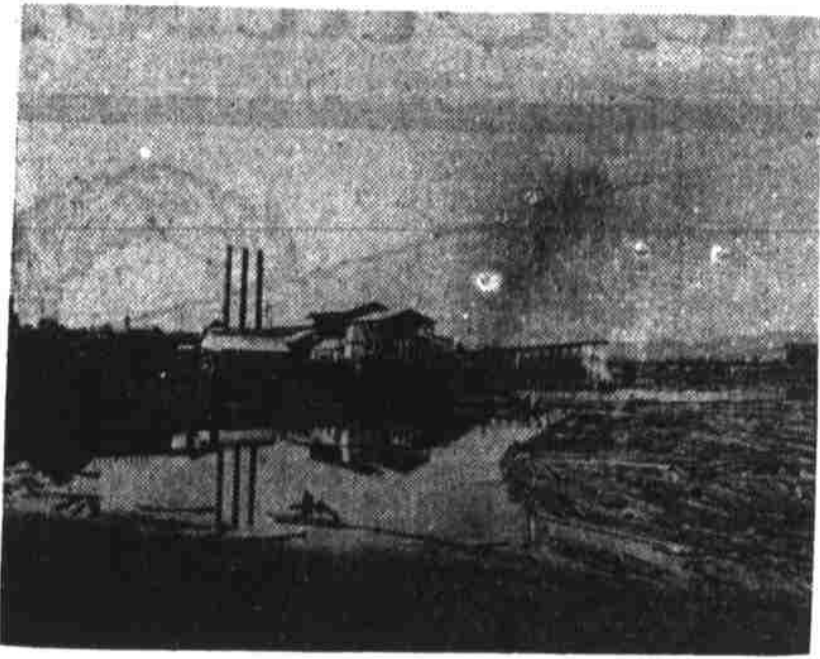


# CARLTON, ONE OF YAMHILL'S FAST GROWING TOWNS



Most Modern Lumber Plant in Pacific Northwest—Photo by B. E. Wright.

become one of the leading industries in this section, as well as one of the most profitable. While it takes about seven years for a grove to come into bearing, the grower does not lose the use of the land for the reason that smaller fruits, such as raspberries, loganberries, strawberries and vegetables can be raised between the rows and as these fruits have a ready market it can readily be seen that one can make a profit from the land while the walnuts are coming into bearing.

The ease with which all clovers and other forage plants can be raised (no irrigation being necessary) makes this an ideal dairying section and there are already a large number of people engaged in this profitable work.

The shipment of grain, hops, live stock and all other farm produce from this point is as large as any point on the west side of the Willamette river.

Until two years ago it was only a small country village, but since that time its phenomenal growth is a surprise to those who have heretofore had the most sanguine opinion of the future growth and development of this section.

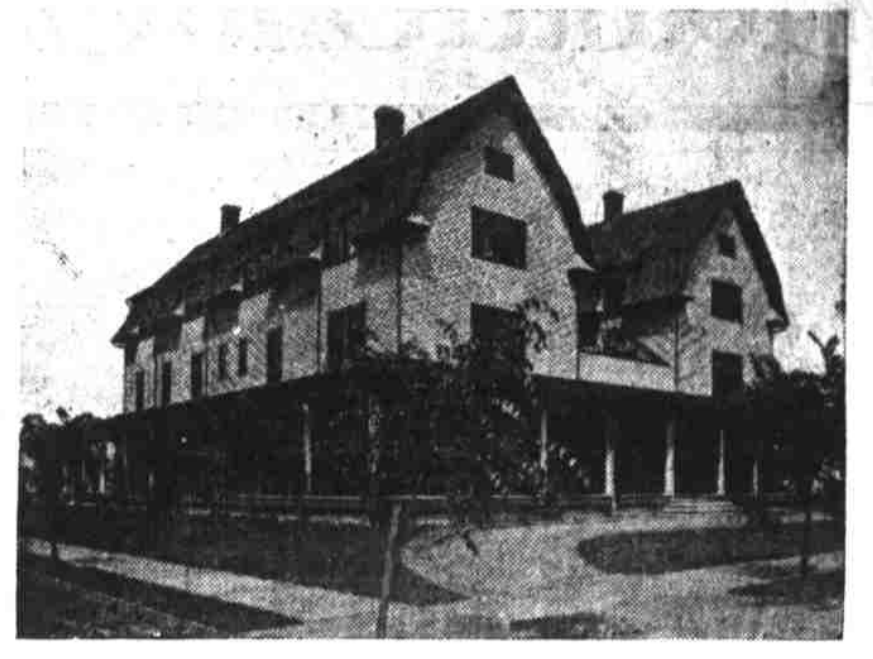
The town now has a population of about 750, and is growing rapidly, there having been at least 30 new dwellings erected within the last year.

erected a sawmill plant at a cost of over \$250,000, with a monthly pay roll of \$30,000. This mill has a capacity of 200,000 feet every 10 hours, and has an almost inexhaustible supply of timber. When fully completed there will be a sash and door factory, a box factory, planing mill, etc. in fact it is given up to be the most modern plant of the kind in the world. The Carlton Lumber Co., who own this immense plant, have gone to great expense in cleaning the river.

The raising of live stock is also another leading industry, there being large numbers of cattle, sheep and hogs raised and shipped from this point. The Craigielea stock farm, upon which the cattle (a picture of which is shown on this page) took the premium at the St. Louis exposition, were raised and grown on this farm. This is conceded to be the finest herd of cattle on the coast if not in the United States.



Scene on the Craigielea Stock Farm, Near Carlton.



Carlton Hotel, Cost \$35,000.—Photo by B. E. Wright.

will nearly double our already large pay roll.

Just at present there is an opening for a cannery and cider factory to take care of our surplus of small fruits and vegetables, also a milk condenser, which is badly needed to handle the large supply of milk produced, as well as other small enterprises, which will show good profits to the investor.

For further information address Carlton Commercial Club, Carlton, Oregon.

## FACTS ABOUT YAMHILL.

Yamhill's large wheat fields are fast being replaced by dairy ranches and diversified farming.

Yamhill's soil is fertile and pro-

duces forage crops, roots and hay in large quantities.

Clover and vetch yield from two and a half to five tons per acre.

Corn is successfully grown in Yamhill county. It is far ahead of any other crop for the silo.

Beets of various kinds do well and are a good winter feed.

There has been quite an improvement in the cattle of the county in the past few years, the tendency being mostly toward the dairy type, with the blood of the Jersey largely predominating.

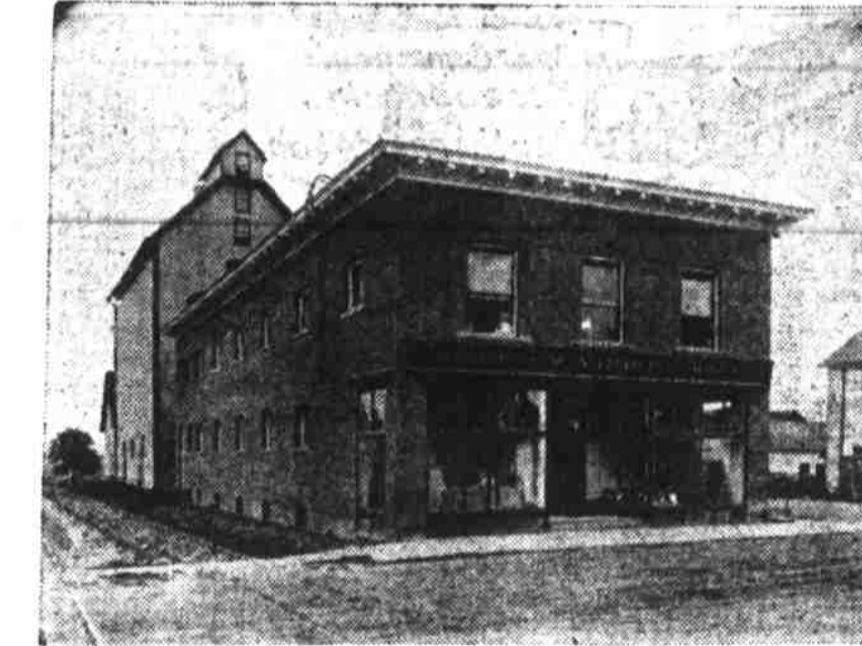
The wool and mohair industry of the county is rapidly attaining flourishing proportions, and is proving a source of big income to Yamhill farmers.

**C**ARLTON is located in the center of the Yamhill valley, 33 miles south of Portland, on the west side line of the Southern Pacific railroad. This particular section is given up by all to be the most prolific of any portion of western Oregon. The land surrounding Carlton is rolling prairies, traversed by small streams, which afford perfect drainage. The soil in the valley is a rich, dark loam, running to deep red in the foothills. The valley land is used principally for the growing of cereals, hops, clover, vegetables and small fruits, while in the foothills are grown the harder grains and fruits, this land being peculiarly adapted to the growing of apples, pears, prunes, cherries and walnuts, all of which grow in great abundance.

There are now large orchards just coming into bearing and many others are being planted, and it is only a matter of time until this section will be known as the fruit producing section of the coast.

The fruits of this section have been placed on exhibition in competition with fruits grown in other localities (which have been and are now more extensively advertised) and have never failed to carry off their share of the premiums.

While walnut culture in this section is only in its infancy, there are now quite a number of young groves which are coming into bearing, and from the crops already produced from these groves, the fact is demonstrated that this is the true home of this delicious nut, and that this will soon



Carlton's New Department Store.

and there will be at least 50 more erected before the close of this year. The contracts are now out for two modern business blocks, construction on which will begin within the next 15 days. Business in most every line is well represented, there being one of the largest department stores in the valley located here.

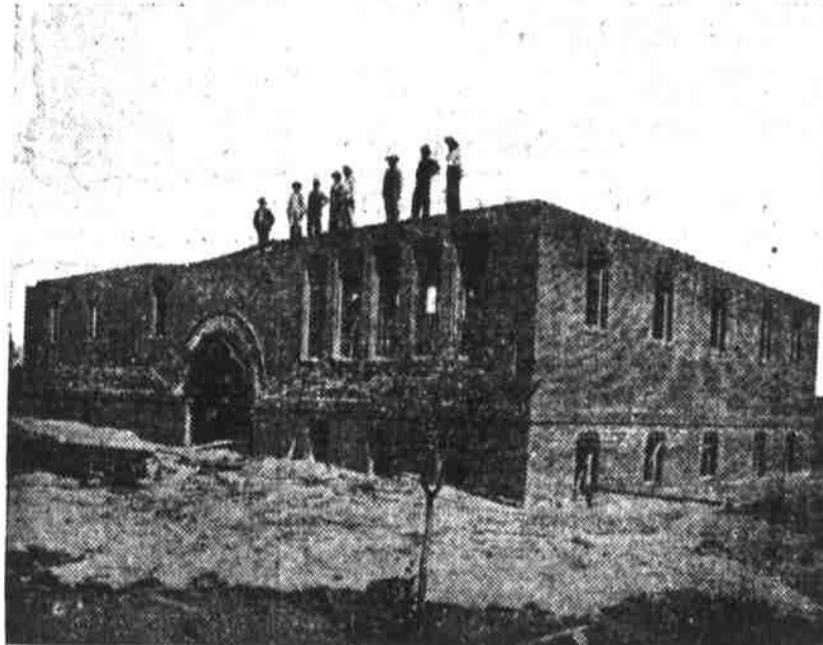
and building splash dams for running logs on the river. This can be done readily during the winter months. They are also now surveying for a line of railroad, which they will build to the belt of timber now owned by them. This plant is fully equipped with a modern machine shop, wherein are done all kinds of repair work for the entire plant.

There is now a hotel built at the cost of \$35,000, which is up-to-date in every respect, being fully equipped with steam heat, private baths and telephone service throughout.

There is now under construction the only brick school building in the county, the picture of which is shown on this page. This is a building of eight rooms which will cost when complete about \$20,000. The building is modern in every respect and will be heated by the most modern methods. It is located on high ground which affords perfect drainage and a fine view and the sanitary conditions are unequalled. The building will be completed in time for the opening of the fall term of school and the corps of teachers employed are the best that can be had.

There are three good church buildings, namely, Methodist, Baptist and Christian, all of which have large memberships.

There is now under contemplation (and there is no doubt that construction work will be commenced on this industry in the near future) the largest brick and pottery plant on the coast. The examination of shale and clay has been going on for some months and it is now fully demonstrated that these have the right consistency for the manufacture of brick and pottery. When completed this



Carlton's Public School, Under Construction.—Photo by B. E. Wright.

# WOODBURN, THE QUEEN CITY OF FRENCH PRAIRIE

## Why a Homeseeker Comes to Woodburn and Goes No Farther

### Magnificent Resources, Advantages and Facilities Adding to Growth and Population; Golden Opportunities; Fine Climate

**W**OODBURN, the "Queen City of French Prairie," is more than keeping up her admirable record as the city of bustle and remarkable progress. Nothing can hold her back; she forges right ahead, urged forward by excellent advantages, gratifying facilities and rich resources. Everything with which we are blessed has a tendency to strongly back up the Queen City and, fortunately, there is nothing of material importance that serves as a weight to drag

the fair city down. Here is one of the most sociable communities to be found in the west, filled with churches, a good high school, a fine private school, nearly all civic orders represented, militia company, two banks, fire company, electric light and water works, and one of the best equipped country printing offices in the state. The main business street is an unbroken line of brick buildings with the exception of half a block, and this summer what frame business buildings there are on this street will be substituted by brick structures.

#### Woodburn's Advantageous Location.

The population of Woodburn is at present estimated at 1,750 souls. The city is happily situated in the heart of rich French Prairie and draws trade from miles distant. What is of much importance to Woodburn is her advantageous location in the famed Willamette valley, 36 miles south of Portland, the metropolis of Oregon, 18 miles north of Salem, the capital of the state, and at the junction of the main line of the Southern Pacific railway with the Woodburn-Springfield branch. The Portland-Salem electric line is now under construction and will give Woodburn the opportunity to reach out in all directions with the products of her various manufacturing industries, and will swell the crowds that can daily be found in our commodious, well-stocked stores, in which the people of this city take pardonable pride.

#### Climate and Soil Perfect.

A homeseeker from the east stops off here. He goes no farther. Woodburn is the ideal spot of which he was in search. Here he finds a beautiful climate, where tornadoes, cyclones, blizzards, floods and destructive electric storms are unknown; where

there has never been a total crop failure; where prosperity surely reigns with the hop, fruit, onion, potato, grain, hay, cattle, sheep, goat and poultry ranches reaping bountiful harvests and finding a ready and good market. Why should he seek farther? What has he dreamed of—peace, plenty and prosperity—he finds right here.

#### Welcome Hand to Strangers.

It was but comparatively a few years ago when the pioneer struggled with a farm of 640 acres. He somehow or other managed to get rich with little help on the farm, and yet, for some unexplainable reason, he insisted on retaining his land and resisted all efforts to persuade him to hold out the welcoming hand to strangers and divide up his farm; but all that is changed now. The pioneer at last recognizes that there is not so much in isolation as he imagined and he is now as eager as others to invite and welcome the homeseeker. That and the development of rich agricultural and mining resources, the growth of manufacturing industries and unprecedented railroad building activity, coupled with the grandest climate in the world and dazzling opportunities, are what is bringing homeseekers to Oregon by the thousands. And they are coming to the Willamette valley, one of the most fertile sections in the northwest, to which not only Portland, but Seattle, Tacoma and Alaska depend upon and look for a large share of the products.

#### Some of the Products.

The soils of this section are principally a dark, rich loam and beaverdam with a little sandy loam on the river bottoms. The products are grains, grasses, fruits, vegetables, and those engaged in hop, potato, onion and fruit industries are making considerable money. Timothy and clover are grown in abundance. Cattle, sheep, hogs, goats and poultry are also extensively raised, many of our farmers realizing good incomes in the sale of beef, mutton, pork, wool, mohair, butter and eggs, a number also selling milk to our cream separators. The vicinity presents an ideal farming section, where all is prosperity. The city of Woodburn offers an unequalled field for investment and a lovely home. Here we have peace from turbulent elements—no tornadoes, no cyclones, little if any snow in winter and consequently no blizzards, no destructive electric storms, a mild winter, a pleasant summer and a grand fall.

#### A Good Trading Point.

Woodburn is one of the best trading points in the fruitful Willamette

valley. It is surrounded by a rich and prosperous section, with a renowned fertility of soil, where a failure of crops was never known. The magnificent climate pleases and holds every homeseeker coming to this beautiful and healthy city and social and hospitable community. There are churches, lodges, high schools, private schools and it is a city praised by all visitors for its many attractive features and look of solidity. It is the second city in size and importance in Marion county, a county out of debt and with thousands of dollars in the treasury.

#### Woodburn's Growth.

Is it any wonder that more brick blocks are planned for Woodburn this summer; that from 100 to 200 more residence buildings will be erected before the expiration of 1907; that the city will have more industries before the year is out?

Certainly one may be pardoned for the display of a little exuberance and for catching the spirit of enthusiasm that prevails in the Queen City of French Prairie.

#### Facts About Marion County.

Marion has an area of 1,224 square miles.

The county contains practically 24,000 acres of government land.

Marion's standing timber is equal to 3,551,000,000 feet.

The assessed valuation of Marion county is over \$10,000,000.

The county has a population of more than 40,000 people.

There are more than 100 public schools in Marion county, which eloquently speaks for its silent yet force-

ful influence in the educational world. The farming sections of Marion county are well served with telephone lines and rural free mail deliveries.

Wagon roads are excellent all over Marion county.

The prune industry is rapidly developing and the product yields the growers nearly \$500,000 annually.

Marion county's live stock is valued at \$1,500,000.

Marion county produces excellent yields of grain of all kinds.

Stock raising and dairying interests are most staple and reliable sources of income to the farmer.

A number of large canneries are in operation in Marion county.

Marion county is the hop-producing center of Oregon. The output is valued at \$2,000,000 annually.

Clover and alfalfa are raised successfully, and in time will greatly increase the county's output of butter, cheese, cream and milk.

Farm lands in Marion average from \$5 to \$100 per acre.

Strawberry growing is well established in Marion county; several hundred acres being devoted to the industry. As high as \$200 to \$300 per acre has been made on strawberries.

One man in Marion county, who has 165 acres of land and milks 38 cows, states that his cows average over \$200 per month from cream. He sold last year \$1,338 worth of hogs, and his place pays him \$4,000 a year.

From Marion last year were shipped 250,000 pounds of wool and mohair, 500,000 bushels of potatoes, 2,000,000 bushels of wheat, 1,000,000 bushels of oats, and 750,000 pounds of hops.

Marion's prune orchards last year yielded 1,500,000 pounds.

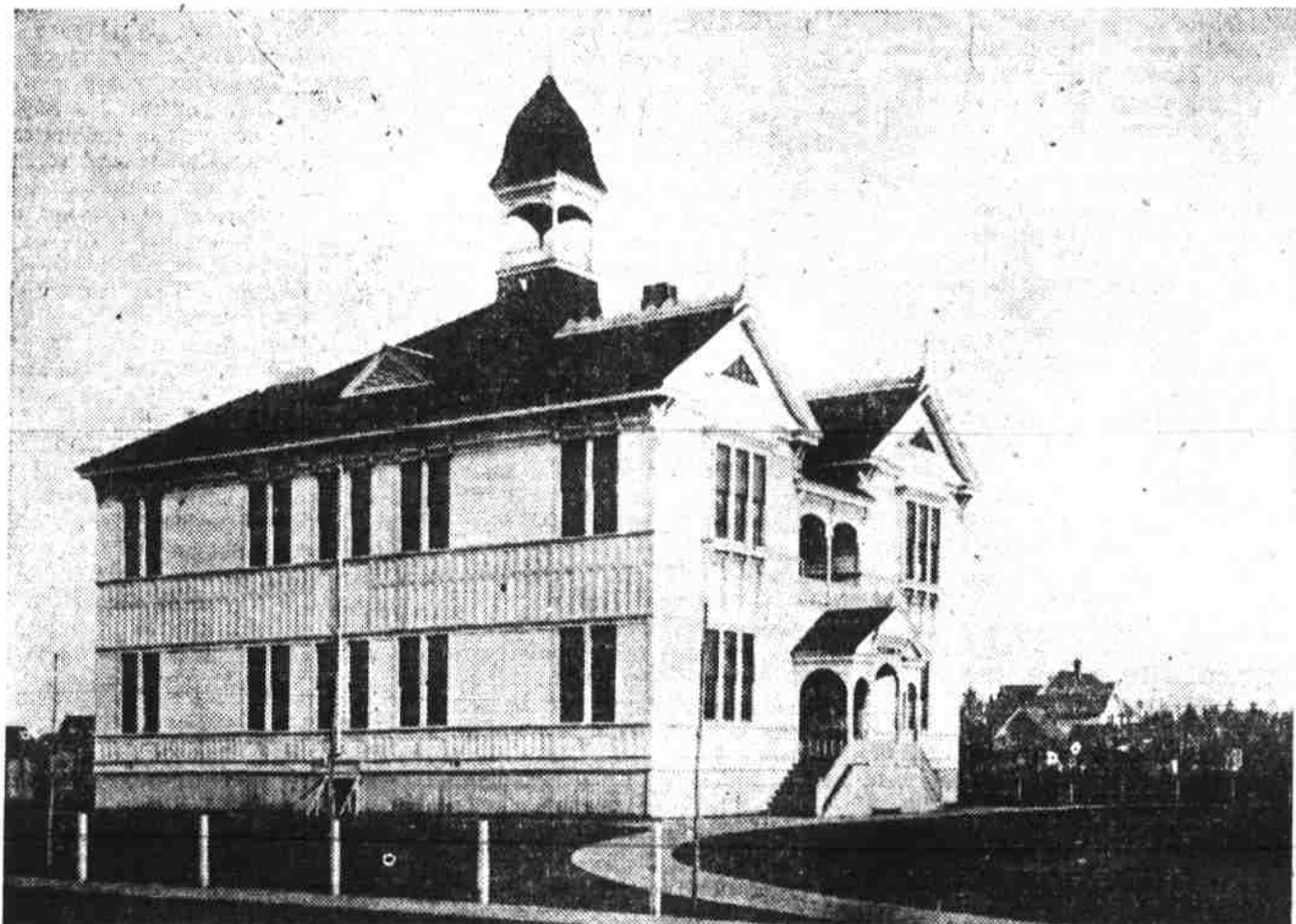
All kinds of fruits do well in Marion county and they are unequalled for size and flavor.

Marion county produces over one-eighth of the hops raised in the state.

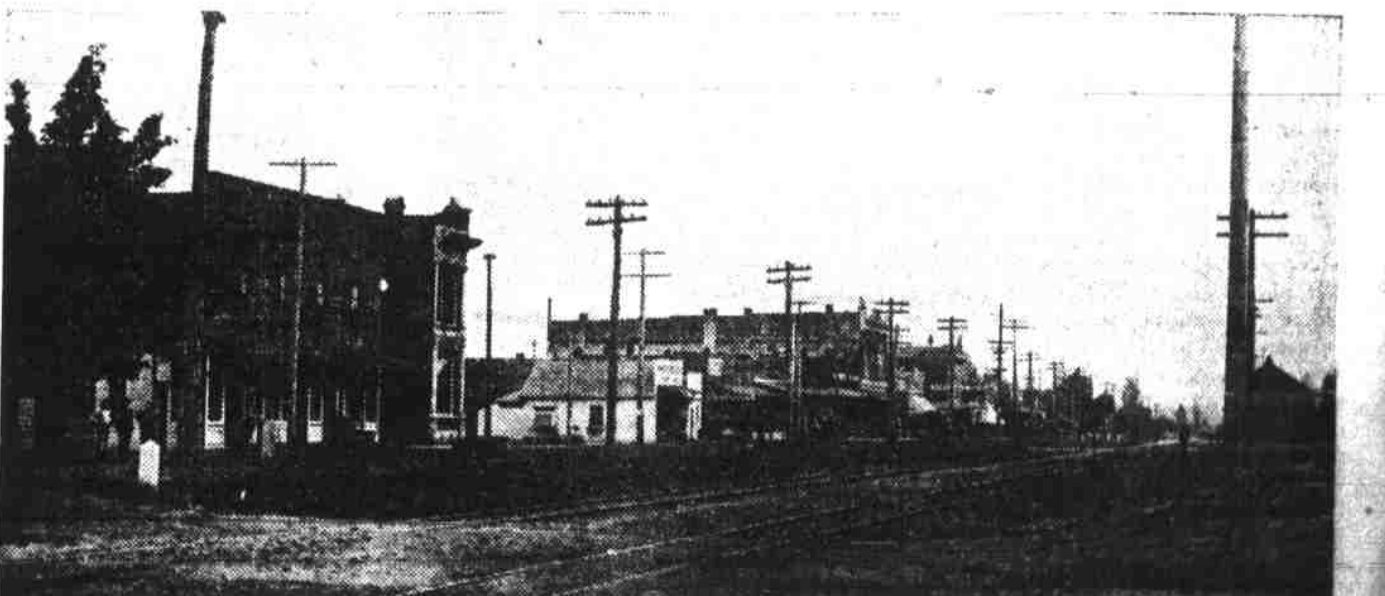
The culture of the English walnut is an assured success in Marion county.



A Hop Farm at Carlton, Oregon.—Photo by B. E. Wright.



Modern School Building in Woodburn.



A Street Scene in Woodburn.