

# ANOTHER DESERT IS FADING AWAY

### Wilderness Will But Little Longer Be the King in Lake County.

## STEALTHY SETTLERS FILCHING THAT REALM

### Hardier Crops Yield Surely in Soil of High Fertility—Boundless Area Available—Marvelous Scenery and Fine Climate and a Grand Future.

(Special Dispatch to The Journal.)

Silver Lake, Or., June 19.—Oregon is a state of contrasts and Lake county is no small portion of the state, neither is it any less surprising in its climatic and physical make-up. There is still snow on the nearby mountain summits but on the sage plains and valleys it is summer heat during the day and cooling breezes at sunset with a tang of frost along toward daylight. The roads in the timber are as yet fairly free from dust but in the open are stilling.

Long stretches of road lie first over scrub rock and then through adobe or sand until the crooked river is crossed, when the segregated lands of the Deschutes irrigation projects are reached. These are largely covered with juniper. From this region are to be had some of the finest views of the snow-capped peaks of the Cascades, Mt. Adams, Mt. St. Helena, Mt. Hood, Mt. Jefferson and the Three Sisters, against the deep blue of a cloudless sky.

At Bend an experiment farm of the ditch company, that to newcomers is a revelation in the variety of crops successfully grown by aid of irrigation. From Bend southward the road lies much of the way along the Deschutes river through the great pine belt of the Willamette valley. The ranges broken now and then by wide prairie flats.

**Cozy Little Town.**  
Bend is a light cozy little town, tidy and neat in its newness, with a population of enterprising people who have built a town far within "the desert" and set their faces against the Prineville intrusions of the "Crook county ring." Their ultimate reward is certain.

Beyond this the meadows of the upper river begin and on the one hand are extended hay ranches carrying the open grass land, and on the other the black pine which for miles extends along the road.

At Rosland, some 30 miles south, is a small settlement about Post-office and stage station. Here roads diverge up the east fork of the Deschutes where are many settlers on the segregated lands of a prospective irrigation ditch company.

Crossing the northern end of the Walker range in a southeasterly direction through a portion of northern Klamath county and emerging from the forest in Lake county on the western edge of the low desert, which extends some 50 miles eastward, one comes upon a body of arid land which is being steadily settled up and which Uncle Sam dedicated in part to an irrigation project, but it failing to make good within a reasonable time, responded there for homesteading last September.

**Reservoir Site.**  
The Silver Lake marsh lands lying like a huge basin south of this desert form the projected reservoir site and is pretty well settled with a hay and stock raising community, having as its center the village of Silver Lake which has for several years past been the mecca of numerous timber claim seekers and is now coming to the notice of the homeseeker because of the location here of a United States land commissioner. Here are good hotels and every and needless to say several locators, who will for a consideration, show the tenderfoot where to make a fortune. Most of this section is prime or volcanic ash and, though arid, is of high fertility.

Surface water can be found over much of this area at depths varying from 10 to 50 feet, and is sheet water of good quality in most instances. A recent analysis made by B. A. Waring, field assistant of the United States geological survey, of the water from the well of John Ross, near Christmas lake, is as follows:

Total solids ..... 432.50  
Calcium ..... 8.20  
Magnesium ..... 8.20  
Sodium and Potassium ..... 124.00  
Sulfate ..... 204.00  
Carbonate ..... .00  
Bicarbonate ..... 4.10  
Chlorine ..... 87.40  
Nitrate ..... Trace

Mr. Waring says further:  
**No Black Alkali.**  
"These figures are in parts of salts in 100,000 parts of water. The absence of carbonates (black alkali) is the most pleasing thing shown by analysis both of the waters and soils of your locality."

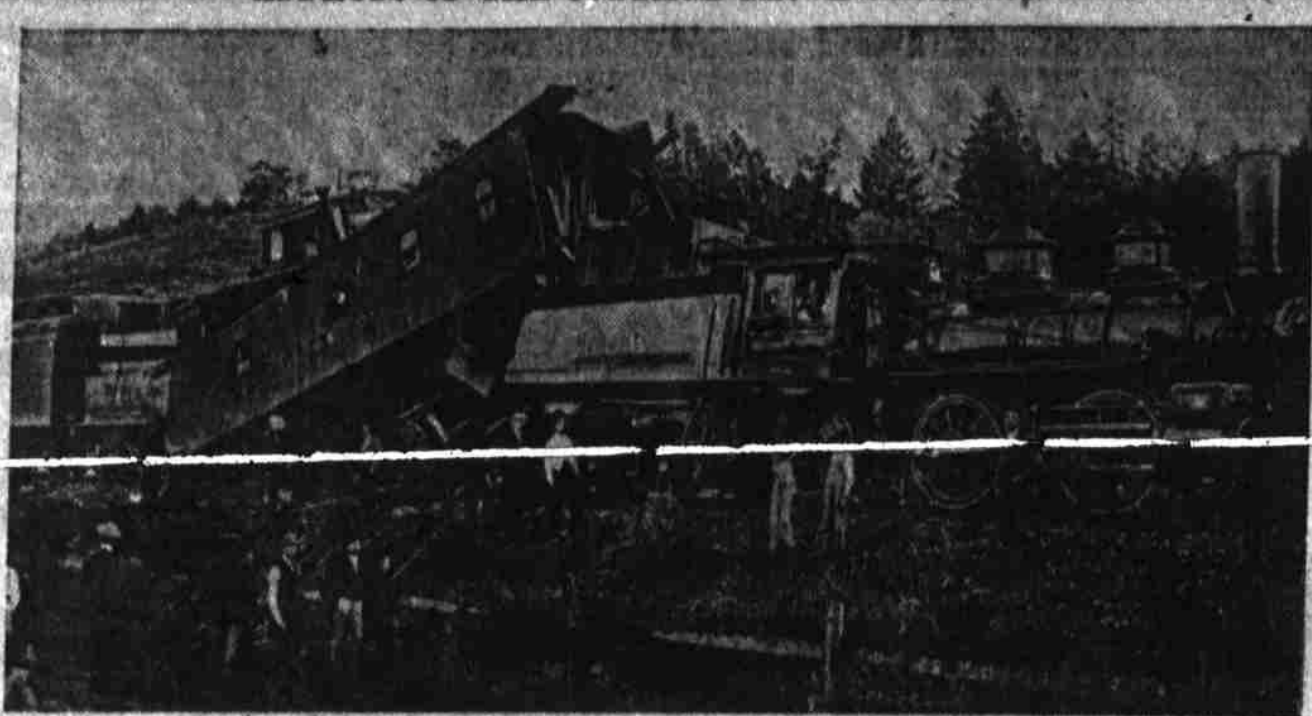
Mr. Ross claims great benefit to his rheumatism and says it is a sure cure for lumbago. He has prevailed on num-



Here are the tiles—bring in your roof.  
Fancy Straws.  
Fancy Shapes.  
Fancy Bands.  
But no fancy prices.  
Panamas, \$5, \$7.50, \$10.00.  
Soft and Stiff Brim Sailors, \$1, \$2, \$3.

**LION Clothing Co.**  
Gaskuhn Prop.  
Men's and Boys' Outfitters.  
166 and 168 Third St.  
Mohawk Building.

## EFFECTS OF THE COTTAGE GROVE-COLLISION



A work train trying to make a siding before the arrival of a passenger train backed into the locomotive of the flyer it was seeking to escape. The occupants of the work train's caboose saved themselves by jumping, though they were somewhat injured in the leap.—Photo by Gourley.

## DEVELOPERS AT FOREST GROVE

### Meeting of Willamette Valley League to Be Held on June Twenty-Sixth.

(Special Dispatch to The Journal.)

Cottage Grove, Or., June 19.—The annual convention of the Willamette Valley Development League will be held here June 26, with afternoon and evening sessions. Governor Chamberlain at the evening session will deliver an address on "The Cause of Progress." Following is the program, musical numbers omitted:

Afternoon session—  
Call to order, President Hinds.  
Address of welcome on behalf of club, C. J. Howard.  
Address of welcome on behalf of city, Mayor J. I. Jones.

Annual business and election of officers.  
"The Public Land Policy of the Future," Congressman W. C. Hawley.  
"The Evolution of Development," J. U. Campbell, Oregon City.

"Oregon University and State Development," Professor F. G. Young, Eugene.  
"Benefits of Water Transportation," Colonel E. Hofer, Salem.

Evening session—  
Report of committees and conclusion of business.  
"Cause of Progress," Governor Chamberlain, Salem.

"The Battle for an Open River," Hon. B. F. Jones, Independence.  
"The Railroad Commission and the Industries of Oregon," T. J. Campbell, chairman-railroad commission, Cottage Grove.

"The Electric Spirit of Roseburg and Coos Bay," Hon. Louis Barbee, Roseburg.

Excellent musical numbers by an orchestra and a male quartet are liberally interspersed.  
The delegates and those attending the meeting are invited to make free use of the clubrooms as guests of the Commercial club.

Friends to settle near him on "the desert."  
To the homeseeker this central Oregon country is as certain as the Palouse country, though the soil must be studied carefully before any large ventures are made.

This season is the second for the desert pioneers who now feel reasonably safe concerning certain crops. Winter and spring wheat, barley, oats, flax, sand vetch, potatoes, alfalfa, sugar beets and all root crops have yielded well, and there is a good home market.

**Raise Livestock.**  
The old-timers who have settled on the watered hay lands around the lakes will continue largely in the livestock business, consuming their hay crops in winter and depending on forest reserve ranges in summer. The newcomer will be kept busy preparing his claim for the big crops to be raised for future export when rail lines come, as they will in due season.

The best way to see this coming country is for a party to combine and either purchase or hire an outfit, taking time enough to investigate carefully and not forgetting side trips into the east Deschutes, Walker basin, Fort Rock and Christmas lake deserts, the old river bed in Crook county, the Cheyenne, Summer lake, Lakeview and Klamath countries, for this plateau region has something for each one who has freight enough to come here and stick to it. It certainly has the finest climate of the northwest, but to those who expect to find anything resembling the country west of the Cascades or the prairies of Montana and Dakota, or the lands of Iowa and Illinois, there will be disappointment. Should 10 per cent of the homeseekers who view this land remain, the early settlement of these lands is a matter already determined.

**Serious Handicap.**  
A serious handicap to some of the most inviting sections exists here through the mitten wagon road lands, which not being on the market practically prevents meanwhile use and settlement of the adjacent government lands.  
The grants are essentially the same as the railroad grants but are further complicated by numerous sales and transfers in bulk with little result other than to make it appear that innocent purchasers would suffer by well-earned forfeiture of such grants.  
It is a notorious fact that patents were issued in defiance of the laws authorizing, which would in the case of an individual work such a defect of title as to involve any innocent purchaser in loss if fault title was not cured by court action.

**NEW MINING AND BUILDING CONCERNS**  
(Special Dispatch to The Journal.)  
Salem, Or., June 19.—Among the articles of incorporation filed with the secretary of state are the following:  
Elliott-Regan Store, Cement & Construction company; incorporators, O. L. Elliott, Fred C. Regan and W. W. Gilbe; main office, Portland; capital stock, \$10,000.  
Windy Hollow Mining company; incorporators, T. A. Crump, T. E. Bernard and F. M. Duke; main office, Lakeview; capital stock, \$100,000; object, locating, prospecting and developing mines.  
The Eastern Candy Works; incorporators, C. Polycarpus, P. G. Attias and D. Polycarpus; main office, Portland; capital stock, \$25,000; object, to do retail and wholesale confectionery business.  
The L. C. Reynolds Lumber company; incorporators, L. C. Reynolds, George F. Reynolds and O. E. Murray; main office, North Bend, Coos county; capital stock, \$40,000.  
The Shasta-Costa Copper company; incorporators, John Fry, W. W. Wren, S. Smith and Fry and John Fry, and

S. E. Masters; main office, Gold Beach, Curry county; capital stock, \$99,000; object, mining and extraction of precious metals.  
Hermiston Baptist church of Hermiston, Oregon; trustees, F. A. Yates, L. W. Furnas, C. E. Cole, J. D. Rice, W. H. Skinner; value of property, \$15,000.  
Heights Park Holding company; incorporators, J. A. Curry, H. K. Sargent and E. M. Pettigrew; main office, Portland; capital stock, \$15,000; object, to do brokerage business.  
F. J. Carney & Co.; incorporators, F. J. Carney, Erik Maunula and Neil Bergman; main office, Astoria; capital stock, \$15,000; object, to conduct a general merchandise store, to operate launches and gasoline boats.

Tomorrow positively the last day to receive discount on east side gas bills.

**School Officers at Barlow.**  
(Special Dispatch to The Journal.)  
Barlow, Or., June 19.—At the annual school meeting J. J. Sandness was elected chairman, S. B. Burg was

elected for three years as director and I. M. Anala for two years. Liddle L. Irwin was elected clerk. An eight-months' term of school will commence the first Monday in October.

## HOTEL LENOX

COE, TERRY AND MAIN STS.  
Portland's Latest and Most Modern Hotel

New Building, conveniently located, fitted with the latest designed furniture, hot and cold water in every room, private baths, modern Grill, long distance telephone, free bus, sample room, free from noise, facing plaza. Rates \$1 and up.

## Buy a Home in "BERKELEY"

# \$1.00 A WEEK

### DOES IT FOR YOU

**AND YOUR HOME WILL ABE in Portland's most beautiful new residence addition. FIVE DOLLARS DOWN and ONE DOLLAR A WEEK. Think of securing one of these magnificent \$125 lots on such terms. You never had such an opportunity to put "the rent man on the run." See or phone us.**

## The Jacobs-Stine Co.

OR  
The Curtiss Co.  
Selling Agents  
309 Abington Phone: A2599  
Main 699

Fifth Floor Swetland Building  
Phone: A2811, Main 359

### STOP PAYING RENT

## SPECULATORS, ATTENTION!

Best bargain ever offered in Portland. Acreage between the rivers, adjoining the O. R. & N. Co. terminal and Swift Co. property.

Why pay for a 50x100 lot when the same money buys one acre of land having rail and water frontage, which will become in the very near future Portland's shipping center?

**BECOME WISE** by carefully investigating this extraordinary bargain. Call at once.

## W. M. KILLINGSWORTH

323 Chamber of Commerce

Take Notice—Only a few acres left—each acre a fortune. Price, \$1000. Buy one or more.

## TRACTION MEN ASK THINGS OF CHEHALIS

Interesting Speculations as Well as Developments Follow Saturday's Disclosures.

(Special Dispatch to The Journal.)

Chehalis, Wash., June 18.—B. J. Weeks of Tacoma has asked of the city council a 40-year franchise for the Central-Chehalis Electric Railway & Power company. It is proposed to build an interurban electric line between Chehalis and Centralia. The road must be completed within a year. Assurance is given that the road will be completed within 90 days and that a mile of steel is now available, with six miles more that can be diverted here.

George W. Gregory, a Seattle attorney, who recently asked for a franchise for an electric railway and for electric light and water franchises, announced to the council that if it considered Mr. Weeks' proposition preferable to his it should accept it.

Considerable interest was aroused in Chehalis by the announcement in Seattle Saturday by Mr. Wyman of the executive committee of the Stone & Webster interests, that the International company proposed to build an electric line from the Canadian boundary connecting with Bellingham, Everett, Seattle, Tacoma, Olympia and Che-

halla. Since Mr. Weeks is employed by the West company in Tacoma, which has been contesting the ground in that city and toward Olympia with the Stone & Webster interests, the situation locally becomes more interesting than ever.

Tomorrow positively the last day to receive discount on east side gas bills.

**William Armstrong Dies Suddenly**  
(Special Dispatch to The Journal.)  
Pendleton, Or., June 19.—William Armstrong, aged 84, a farm laborer and a well-known character about Hail, was found dead in bed last evening at the home of Robert Montgomery. He had complained of distress due to bad heart action.

# ACREAGE

6 acres 3 miles east of Lents; one-half mile from street car line; 1 acre cleared; balance very light brush; good well of water; also never-failing stream; on good public road; small 3-room house; \$100 worth of furniture; also numerous other fixtures; also 1000 ft. of lumber; \$1500 cash, balance on easy terms.

3 1/2 acres one-fourth mile from car line; half mile from Willamette river; on good public road; all cleared; new 3-room house. Price \$1400.

6 acres 2 blocks from car line, all cleared, partly fenced; new house. Price \$1500; half cash; balance to suit purchaser.

2 acres one-half mile from Willamette river; on good public road; all cleared and in good state of cultivation. Price \$500.

1 1/2 acres two blocks from car line; on public road; rich soil and lays well. Price \$300.

For half-acre and acre tracts on car line, very rich soil, no rock nor gravel, don't fail to call on us.

## THE SHAW-FEAR COMPANY, 245 1/2 Stark St.

## AMERICAN LADY CORSETS

All \$1.25 Styles at 98c—8 Models

## TRUNKS AND SUIT CASES ALL AT REDUCED PRICES

# W. H. MARKELL & CO.

East Side Department Store Cor. Grand Avenue and East Alder

## Our Big Removal Sale a Wonderful Success

Never before have such values been offered on the East Side, and nowhere in the city can you match the bargains which we are offering during this great sale. These facts are fully attested by large numbers of people from the West Side, the East Side, Vancouver, Oregon City, Newport, Estacada and all points hereabout, who have visited this store and shared in the offerings.

### Great Reductions in Price in Every Department

And nearly every article reduced. You'll find hundreds of bargains at this store other than advertised. Keep your eye on the windows.

Long Silk Gloves, \$1.75 Values at \$1.29	Long Silk Gloves, \$1.75 Values at \$1.29	Women's Wash Suits, Values to \$3.00 at \$1.98
Very long white all silk Gloves of extra quality, double tipped, sizes 6 and 6 1/2.	Extra long all silk white Gloves, of splendid quality, double tipped, sizes 6 and 6 1/2.	Dainty new styles in white and colored Suits, ready for use right now when needed.
Bissell's Carpet Sweepers, \$3.50 Grade at \$2.33	Silk Underskirts, Values to \$8.50 at \$4.98	Mexican Straw Hats, 25c Value at 10c
You can not buy better sweepers than these; latest improvements and all full nickeled, oak and mahogany finish.	Rich, lustrous taffeta silk Skirts of exceptional quality, in black, plain colors, stripes and plaids, a splendid assortment of colors to choose from.	A sun hat adapted for wear by any one, boy, girl, man or woman, and they are nearly indestructible.
Every Hammock Reduced 75c Hammocks ..... 49¢ \$1.25 Hammocks ..... 75¢ \$1.50 Hammocks ..... 98¢ All others reduced.	Women's Suits at One Half Price	Women's Slippers, \$1.00 Values 69c
Embroidery Bargains, Values to 20c at 9c.	Just a few stylish tailors-made Suits left, but they are very choice and you may take them for just one half of our original low price. Better come early.	Just plain common sense low heel comfort Slippers. All comfort and good wear, sizes 4 to 8.
A great lot of Embroideries in widths up to 7 inches. Your choice of the lot 9¢.	Men's Suits Worth to \$15 at \$7.95	Men's Soft Shirts, \$1.25 Grade 98c
Cushion Tops, Regular 25c at 15c	An excellent lot of Men's Suits, in serges, cassimeres and worsteds that regularly sold at \$12.50, \$13.50, \$14 and \$15, but which are broken lots are included at this one price of \$7.95. Every suit a big bargain.	"Standard" mercerized hot weather Shirts, in cream, white and gray, ideal shirt for this weather.
Parker's Alarm Clocks, \$1.25 Grade 77c	Men's Canvas Shoes, \$1.25 Grade 98c	Covert Canvas Shoes with leather soles are full of comfort and satisfaction.
Parker's genuine rotary hammer Alarm Clocks. Thoroughly reliable and dependable, and sold elsewhere at \$1.25.	Mexican Straw Hats 25c Grades at 10c	Men's 10c Canvas Gloves 5c
Women's Suits at One Half Price	A sun hat that any one may wear. Genuine Mexican hats, the kind that are practically indestructible.	Greatest Hat Bargains
Just a few stylish tailor-made Suits left, but they are as choice as we have had and you can take them for just one half of our original low price. Better come early.	Corset Covers, Values 35c at 18c	All this season's newest and best styles are in the cut rates. \$7.50 Panamas ..... \$5.95 \$5.00 Panamas ..... \$4.15 \$3.00 Soft or Stiff Hats. \$2.45 \$2.50 Soft or Stiff Hats. \$1.95
Folding Go-Carts, Values to \$6.50 at \$3.98	Wash Dresses for the Girls	Women's White Waists Values to \$2.00 at 98c
Any of our \$8.00 or \$6.50 folding adjustable Go-Carts, all fitted with rubber tires, adjustable reed front and back.	At price of materials. Suits that are well made, for girls from 6 to 14 years at 49¢, 63¢ and 98¢. Both white and colors.	A very handsome lot of lace and embroidery trimmed Waists, some have short sleeves, some long sleeves, some low neck and others with collars, all very elegant and newest styles.
More Bleached Sheets, 65c Grade at 47c	Women's Patent Oxfords \$2.50 Grade \$1.88	Wash Goods Worth to 20c Yard at 11c
A very good grade of full bleached Sheets, all ready for use, size 72 by 90 inches.	Swell new plain toe patent Gibson Oxfords, with large eyelets and ribbon laces, very stylish.	All handsome new patterns in organdies, lawns, Swisses, batistes, madras, etc.
10c Blackola Polish 5c	Women's and Misses' Bathing Suits Reduced—All Good New Styles	
25c Boston Garters 14c		