

Other Classified Advertisements will be found on pp. 16-17.

NEW TODAY. ACREAGE

\$40,000—A very fine 800-acre farm, 1 mile of a good little town on R.R. in Yamhill county; over 700 acres in cultivation, balance in timber and pasture; large 11-room well finished house; large barn; fenced and cross fenced; splendid soil; very fine tract to cut into small farms; very easy payments.

\$26,000—A fine farm of over 500 acres, 1/2 mile of good town of 5,000 people in Willamette valley; excellent soil, over 200 acres in cultivation, balance in timber and pasture; over 8,000 cords of furniture and cordwood on place; close to river; poor buildings; enough clear profit on wood to half pay for place; fine place to cut into small garden tracts.

\$7,500—A nice home of 10 acres only 1 mile of carline, near city; half in berries and garden; nice 6-room house and good barn; close to school, on good road; terms, half cash.

\$6,000—5 acres two blocks off street carline; nearly all in berries; small house and barn; nice tract to cut into lots.

\$1,600—A 16-acre tract on Section line road, 4 miles east of Mount Tabor; about 5 acres has been cleared, balance in brush; no buildings; a snap.

\$5,000—A 2-acre tract on Portland Heights, 1 block off carline.

TITLE GUARANTEE & TRUST CO. CORNER OF SECOND AND WASHINGTON STREETS.

INVESTORS Have client who wants 15,000 feet floor space for manufacturing purposes, will guarantee 6 per cent net on lease; will consider either east or west side location. Particulars, Commonwealth Trust Co., Mr. Mayor.

MARRIAGE LICENSES. Ray E. Michael, Junction City, Oregon; 25, Ovelia Higgins, 23 Ashton A. Fellow, 225 Market st., 18; Zoe Potts, 19.

BIRTHS. KUEHN—June 9, to Mr. and Mrs. A. E. Kuehn, 689 Harold street, a son, KUEHLE—June 17, to Mr. and Mrs. Henry Kuehn, 14 Buchtel avenue, north, a daughter.

DEATHS. THOMPSON—June 16, Benjamin Pike Thompson, aged 50 years 4 months and 13 days, 1281 East Eighth north; hemorrhage of stomach.

HELP WANTED—FEMALE. WANTED—FIRST WAITRESS AND a chambermaid at Hobart Curtis, 14th and Jefferson.

HELP WANTED—FEMALE. WANTED—FIRST WAITRESS AND a chambermaid at Hobart Curtis, 14th and Jefferson.

SITUATIONS WANTED—MALE. WANTS POSITION BY EXPERIENCED factory cook. Address 247 1/2 Stark st., Chinese Mission.

WANTED—FINANCIAL. IF YOU WANT A \$450 REAL ESTATE mortgage secured drawings 7 per cent, call at 207 Lafayette Bldg., Cor. 5th and Washington.

FURNISHED ROOMS—FOR RENT. 450 YAMHILL NEAR 17TH. Two double rooms, one with alcove. Gas Bath. Both phones. Quiet.

ROOMS AND BOARD. A FEW 475 LOTS LEFT, 4 BLOCKS from carline, half price; spot cash. Aylsworth & Epton. Phone Tabor 570.

FOR RENT—HOUSEKEEPING. 1454 6TH, 2 LARGE HOUSEKEEPING rooms, facing 8th; gas ranges, laundry, light and water.

FOR RENT—HOUSES. FOR RENT—SIX ROOM COTTAGE, 125 N. 21st.

FOR RENT—4 ROOM HOUSE, 317 Lafayette St. Rent \$25. Key near door. Inquire 267 Hall st.

FOR SALE—REAL ESTATE. St. Johns. 10 lots, 44x100, right in St. Johns, \$110 each. I will deposit cash in any bank and guarantee that I will resell in 60 days, and make you 50 per cent on investment, or forfeit deposit. Act quick if you want it.

YOU CAN'T BEAT THIS. Biggest income investment on the market; for only \$7,000 you can buy new business property that will return \$150 per month; don't wait; investigate this today.

\$125 PER ACRE—EASILY CLEARED. Mt. Hood carline; 20 per cent cash, balance long time. Aylsworth & Epton. Phone Tabor 570.

100X120 BETWEEN HANCOCK AND Schuyler, near Irvington and Broadway carlines, for \$1,600.

OWN YOUR HOMES. BE HAPPY. New 4-6- and 7-room modern cottages with large lots, some fine improvements, close in. 5c fares; small cash payments; prices range from \$1,100 to \$3,000.

GREBE & PFAPFLE, 203 3d st.

3 ROOMS, 50X100 CORNER, WORTH \$3,500. Owner needs money. \$2,600 buys this if taken quick. One-half cash. Phone evenings, E. 1824.

TIMBER. \$1,800 CASH. Saw mill—130 acres deeded land, 2,000,000 feet timber, must sell to satisfy mortgage, worth 3 times amount asked. C. C. Shady, 306 Abington Bldg.

FOR SALE—LIVESTOCK. ONE YOUNG GENTLE FRESH COW. E. Z. Lentz, Or., 4 blocks south of car station; price \$35.

BARTER AND EXCHANGE. GROCERY TO EXCHANGE ON HOUSE and lots. Good location and business. 826 Union avenue N.

CLAIRVOYANTS AND PALMISTS. CONSULT THE BEST—IT WILL PROVE CHEAPEST IN THE END. FREE TEST! Take this advertisement to PROF. D. NIBLO, 303 1/2 Washington street.

SAFES. PORTLAND SAFE CO. SOLE AGENTS for Herring-Hall-Marvin safes. Maganese Steel Safe Co.'s bank safes; 20 second-hand fireproof safes and bank safes, very cheap. See them or write us.

WARREN CONSTRUCTION CO. Street paving, sidewalks and crossings. 314 Lumber Exchange.

THE BARBER ASPHALT PAVING CO. of Portland. Office 655 Worcester bldg.

SPIRITUALISM. MRS. SOPHIA B. SEIP, RELIABLE Spiritual readings daily at 202 Alisky bldg.; circles Tuesdays and Fridays at 8 p. m.; 25c. Phone Pacific 2335.

MRS. STEVENS, PORTLAND'S RELIABLE palmist and spiritual life reader; readings daily, 243 1/2 Yamhill.

MRS. SHAVER, SPIRITUAL READER, 426 Burnside st., corner 10th.

STENOGRAPHERS. PUBLIC STENOGRAPHER AND TYPEWRITER. Main 1271. 814 Dekum bldg.

FOR RENT—FINE STORE, 30x50, suitable for market, restaurant, dry-goods, etc.; building in; 243 1/2 Yamhill. Rent very reasonable. 44-46 N. 6th st.

SEWING MACHINES. THE SEWING MACHINE REPAIR CO., 372 First st., formerly machinist for the Singer Sewing Machine company. All kinds of machines repaired at lowest rate; the only machine engine expert on the Pacific coast. Home Phone A 3520.

TYPEWRITERS. HEADQUARTERS FOR NEW AND REBUILT typewriters of all makes; our window; if you are going to buy a new typewriter see us before buying; we can save you money; we have parts for repairing all machines; state agents for the Visible Fox; we buy all kinds of typewriters. The Typewriter Exchange, Inc., E. J. Ellison, manager, 84 3d st.

BLICKENSCHER, TYPEWRITER Agency—Supplies; repairs. Raleigh bldg., 6th and Washington sts. PUBLIC STENOGRAPHER.

WHOLESALE JOBBERS. M. A. GUNST & CO., DISTRIBUTORS OF FINE CIGARS. PORTLAND, OREGON.

EVERDING & FARRELL, PRODUCE and commission merchants, 140 Front st., Portland, Or. Phone Main 179.

OREGON FURNITURE MANUFACTURING CO.—Manufacturers of furniture for the trade. Portland, Or.

WADHAM & CO., WHOLESALE Grocers, manufacturers and commission merchants, 4th and Oak sts., Portland, Or.

FURNITURE MANUFACTURING AND special orders. L. Huvensky's furniture factory, 307 Front st.

ALLEN & LEWIS, COMMISSION and produce merchants, Front and Davis sts., Portland, Or.

WHOLESALE CROCKERY and glassware. Prael, Hegde & Co., Portland, Or.

THE OREGON CHEESE CO. (INC.)—Cheese, butter, eggs, etc., dry products bought or handled on commission, 126 5th st. (Sweetland bldg.), Portland, Or.

TRANSFER AND HAULING. C. O. PICK—OFFICE 88 1ST ST. Between Stark and Oak sts., phone 594. Planes and furniture moved and packed for shipping; commodious brick warehouse with separate iron rooms. Front and Clay sts.

OLSEN-ROE TRANSFER CO. Henry Roe, E. P. Sheasgreen, W. A. Cleland. General transfer and storage of pianos and furniture moved, packed and shipped—309 Oak st. Both phones.

PENINSULAR EXPRESS & BAGGAGE Transfer, 247 Alder st. Phone Main 3171.

OREGON TRANSFER CO., 124 N. 6TH. Main 65. Heavy hauling and storage.

INDEPENDENT BAGGAGE & TRANSFER CO.—Storage, 324 Stark Main 407.

TOWEL SUPPLY. CLEAN TOWELS DAILY—COMB. brush, soap, \$1 per month. Portland Laundry & Towel Supply Co., 9th and Couch sts. Phone 410.

TRANSPORTATION. GREAT NORTHERN BULLETIN

Jamestown Exposition LOW RATES. JULY 3, 4, 5; AUGUST 9, 10; SEPTEMBER 11, 12, 13.

Chicago and return, \$71.50. St. Louis and return, \$67.50. St. Paul, Minneapolis, Duluth, Superior, Winnipeg and Port Arthur and return, \$60.

3—TRAINS DAILY—3 For tickets, sleeping car reservations and additional information, call on or address H. DICKSON, C. P. & T. A., 132 THIRD ST., PORTLAND, OR. Telephone: Main 650. Home A-2284.

Alaska 1907 EXCURSIONS. 5 TRIPS. S. S. Spokane, June 14, 20; July 19, 26; Aug. 2, 9, 16, 23, 30, 6, 13, 20, 27, 3, 10, 17, 24, 31, 7, 14, 21, 28.

HOME ROUTE. S. S. Senator, June 24. S. S. ALASKA ROUTE. Skagway, Sitka, Juneau and way ports. Sailing 9 p. m.

S. S. Co.'s Humboldt, June 2, 12, 22 Cottage City, via Sitka, June 15, 25 City of Seattle, June 7, 17, 27

SAN FRANCISCO ROUTE. Sailing 9 a. m. From Seattle. City of Puebla, June 4, 17 Sonoma, June 11, 24 S. S. President, June 27

City of Moce, 249 Washington St.

Ho! For Astoria GO ON Fast Steamer Telegraph

Daily (except Thursdays). Leaves Alder street dock 7 a. m. PHONE MAIN 665.

Colombia River Scenery REGULATOR LINE STEAMERS. Daily service between Portland and The Dalles, except Sunday, leaving Portland 7 a. m., arriving about 5 p. m., carrying freight and passengers. Splendid accommodations for tourists and hunters.

DOCK FOOT OF ALDER ST., PORTLAND; and COURT ST., THE DALLES. Phone Main 914, Portland.

FAST PACIFIC STEAMSHIP CO.'S Steamships ROANOKE and GEO. W. ELDER. Sail for Eureka, San Francisco and Los Angeles direct every Thursday at 8 p. m. Ticket office, 122 Third, near Alder. Phones M. 1314. H. YOUNG, Agent.

C. Gee Wo The Well-Known Reliable CHINESE Root and Herb DOCTOR

Has made a life study of roots and herbs, and is the world's discoverer and is giving to the world his wonderful remedies. 30 MERCURY POISON OR DRUG USED—HE CURES WITHOUT OPERATION, OR WITHOUT THE AID OF A KNIFE. He guarantees to cure Catarrh, Asthma, Long, Throat, Rheumatism, Nervousness, Nervous Debility, Stomach, Liver, Kidney Troubles, the Low Method, Female Weakness and All Private Diseases.

A SURE CANCER CURE. Just Received From Peking, China—Safe, Sure and Reliable. IF YOU ARE AFFLICTED, DON'T DELAY. DELAYS ARE DANGEROUS. If you cannot call, write for symptom blank and circular. Enclose 4 cents in stamps.

CONSULTATION FREE. THE C. GEE WO CHINESE MEDICINE CO., 108 1/2 First St., Portland, Oregon. Please Mention This Paper.

MOURNFUL RESULT OF HAPPY JOURNEY. (Special Dispatch to The Journal.) Scappoose, Or., June 18.—Bennie Hanemann, about 5 years old, is dead of pneumonia. He had just returned with his parents from a visit in Minnesota, and caught cold on the train.

NOTED OLD SAWMILL BUILDING BURNED. (Special Dispatch to The Journal.) Hood River, June 18.—A disastrous fire which started from a burning rubbish pile yesterday destroyed the large sawmill building formerly used by the Oregon Lumber company here. The building was partly empty, as the machinery, with the exception of the large engine, boilers and small engine for operating the electric light plant, had been removed to the company's big plant at Dec. The loss is estimated at several thousand dollars. The fire swept everything near it, including a planing plant, several dwellings and some small buildings. The mill was one of the oldest land marks about Hood River and was at one time one of the largest along the Columbia river. There are many visitors here, attracted by the entertainment.

Street Carnival at Chehalis. (Special Dispatch to The Journal.) Chehalis, Wash., June 18.—The Pacific Coast Carnival company began a week's street show here yesterday on Chehalis avenue and adjacent streets. There are many visitors here, attracted by the entertainment.

THROUGH SERVICE TO All Eastern Points. Three Transcontinental Trains Daily from Portland, Tacoma, Seattle, Spokane, and intermediate points to St. Paul and Minneapolis, connecting with eight different lines to Eastern and Southern Points.

NORTHERN PACIFIC-BURLINGTON THROUGH SERVICE. With St. Joseph, Kansas City, Omaha, St. Louis, and direct connections for Denver and Chicago.

Any Northern Pacific Agent will help you arrange your itinerary, give you rates and all information and make reservations for you.

Northern Pacific Railway A. D. CHARLTON, A. G. P. A. Portland, Oregon. Ticket Office Third and Morrison Streets.

THROUGH SERVICE TO All Eastern Points.

THROUGH SERVICE TO All Eastern Points.

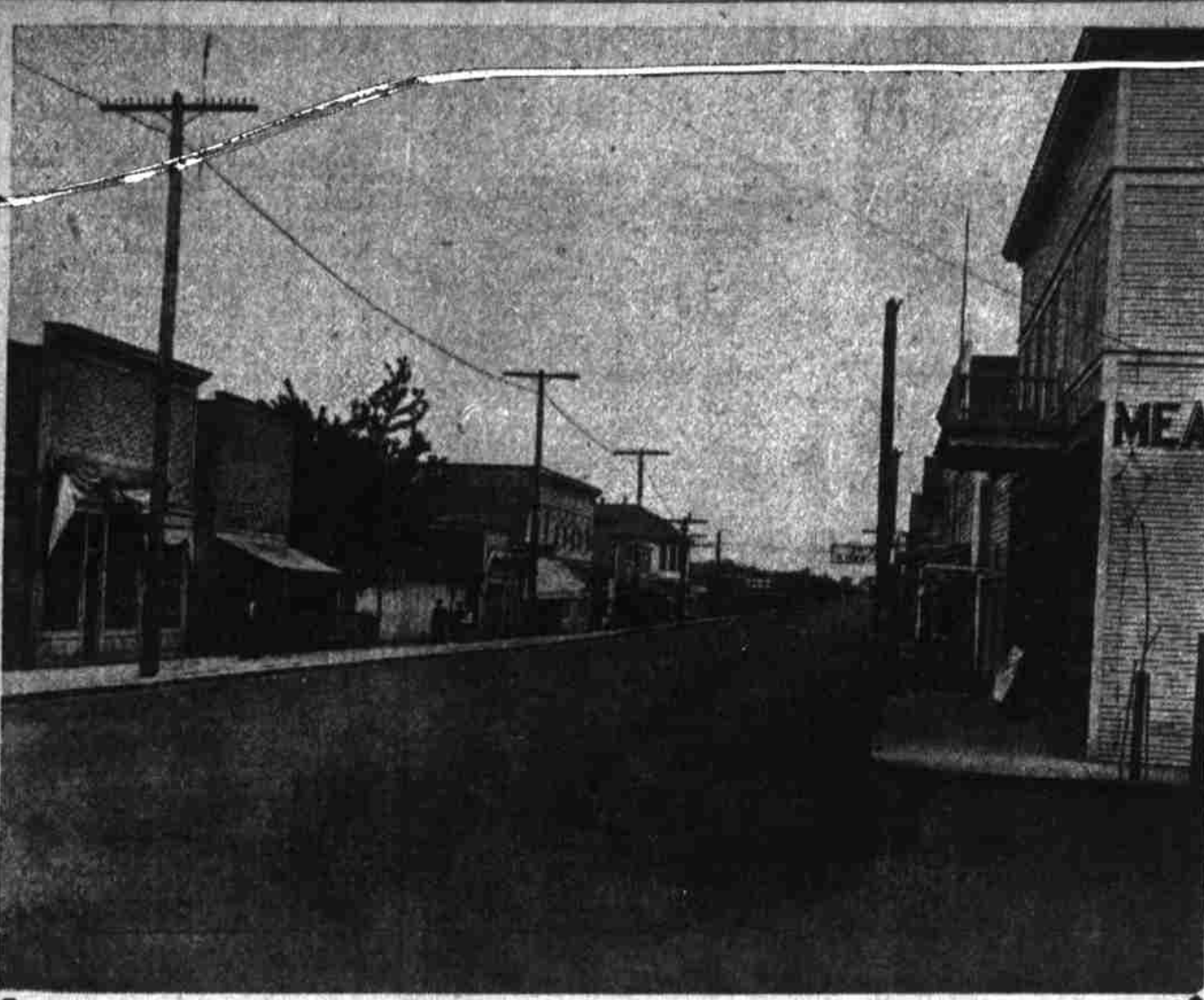
THROUGH SERVICE TO All Eastern Points.

THROUGH SERVICE TO All Eastern Points.

THROUGH SERVICE TO All Eastern Points.

THROUGH SERVICE TO All Eastern Points.

THROUGH SERVICE TO All Eastern Points.



Where the Residents of Terrace Park Trade;

Every Convenience Right at Your Door—No Other Subdivision in Portland has the Advantages of Terrace Park—The "MV" Car Line Passes This Street

Here is a scene on the Base Line Road and Meridian Avenue (one block from Terrace Park). Stores of all kinds are at this point. Several first class grocery stores are here, splendidly kept drug store, a dry goods store, meat shops, confectionery stores, a comfortable hotel, in fact every convenience is right at hand—no air castles in Terrace Park—the houses and the people are already there.

The Terrace Park tract office is shown on the left of the picture. Terrace Park has a five blocks' frontage on this street; the trees shown in the picture are in the Park—they are magnificent cherry trees—how would you like to have a home among cherry trees?

Look at Terrace Park Before Deciding. Asking this isn't doing anybody an injustice, judging from what others have said who have seen the several tracts about the city, we have by far the best home proposition in Portland.

Select a Lot and Make First Payment any Time this Month. We want home-builders in Terrace Park—we will do anything we can to get home-builders there. We will build you a house and take monthly payments for it.

\$300 gets a beautiful lot—10 per cent down, \$10 a month. At your very first opportunity see us!

The SPANTON COMPANY 270 STARK ST., Opp. Chamber of Commerce - Phone Main 2828 Terrace Park Office Open After 1 P. M.—Phone Tabor 180

building was partly empty, as the machinery, with the exception of the large engine, boilers and small engine for operating the electric light plant, had been removed to the company's big plant at Dec. The loss is estimated at several thousand dollars. The fire swept everything near it, including a planing plant, several dwellings and some small buildings. The mill was one of the oldest land marks about Hood River and was at one time one of the largest along the Columbia river. There are many visitors here, attracted by the entertainment.

Street Carnival at Chehalis. (Special Dispatch to The Journal.) Chehalis, Wash., June 18.—The Pacific Coast Carnival company began a week's street show here yesterday on Chehalis avenue and adjacent streets. There are many visitors here, attracted by the entertainment.

THROUGH SERVICE TO All Eastern Points. Three Transcontinental Trains Daily from Portland, Tacoma, Seattle, Spokane, and intermediate points to St. Paul and Minneapolis, connecting with eight different lines to Eastern and Southern Points.

NORTHERN PACIFIC-BURLINGTON THROUGH SERVICE. With St. Joseph, Kansas City, Omaha, St. Louis, and direct connections for Denver and Chicago.

Any Northern Pacific Agent will help you arrange your itinerary, give you rates and all information and make reservations for you.

Northern Pacific Railway A. D. CHARLTON, A. G. P. A. Portland, Oregon. Ticket Office Third and Morrison Streets.

HOTEL JEFFERSON TURK AND GOUGH STREETS SAN FRANCISCO SPECIAL SUMMER RATES. New hotel, faces Jefferson Square. Two blocks from Van Ness Ave., the present shopping district. Car lines transferring all over city, pass door. Every modern convenience. 250 rooms single or en suite, 150 private baths. American and European plans. Prices moderate. Omnibus meets all trains. STEWART-BARKER CO. The Hotel Stewart Opens September 1st.

SAN FRANCISCO'S LEADING COMMERCIAL HOTEL, CONTAINING 200 ROOMS. The St. James FULFON ST. AND VAN NESS AVE. SAN FRANCISCO. NATIONAL HOTEL CO., Prop. Wm. F. Deane, Mgr.

Is situated in the heart of the business district. Car lines transferring all over city, pass door. Every modern convenience. 250 rooms single or en suite, 150 private baths. American and European plans. Prices moderate. Omnibus meets all trains. STEWART-BARKER CO. The Hotel Stewart Opens September 1st.

THE BEAUTIFUL NEW Hotel "Key Route Inn" 22nd Street and Broadway OAKLAND

Sunny rooms, private baths, long-distance telephones, compressed air cleaning, large lobby, car line in car to with cuisine and service unsurpassed. For rates, etc., address N. S. MULLAN, Manager. Formerly Assistant Manager Palace Hotel, San Francisco.

HOTEL HOLLAND 2115 1/2 Street, Bet. Powell and Mason, San Francisco. NOW OPEN. Strictly First-Class. Absolutely Fire-proof. 138 Rooms; 90 with Bath. J. O'DONNELL, Mgr.

HOTEL AUDUBON SAN FRANCISCO—EUROPEAN PLAN ONLY. Single rooms or en suite. Elevator, steam heat, electric lights and all modern conveniences. Strictly first-class. Convenient to shopping centers. On direct line from ferry and Third and Broadway depots. Rates \$1.00 to \$3.00. 623 Hills St. near Van Ness avenue. C. E. GANTER, Mgr.

SUMMER RESORTS LOCKSLEY HALL SEASIDE, OREGON. Spend your vacation at Seaside and at delightful Locksley Hall. More attractive than ever before. Accommodations of the highest order. One hundred elegant outside rooms; private baths; electric lights; hot and cold water. Annex overlooking the Pacific and delightfully situated cottages. Cuisine Unsurpassed. See Foods a Specialty.

FREE BUS MEETS ALL TRAINS. F. L. AUSTIN, L. A. CARLISLE, Props. HOTEL MOORE OPEN ALL THE YEAR. GLATSOFF BEACH, SEASIDE, OREGON. The Cliff House of Oregon. Directly on the beach, overlooking the ocean. Hot salt baths and surf bathing. Recreation pier for fishing. Sun parlor, electric lights, fireplace and furnace heat. Fine walks and drives. See foods a specialty. Rates, \$2.50 and \$3.00 per day. SPECIAL RATES BY THE WEEK. DAN J. MOORE, Prop.

THE PORTLAND EUROPEAN PLAN ONLY HEADQUARTERS FOR TOURISTS AND COMMERCIAL TRAVELERS. Everything to eat and drink, and it costs no more in the city. Every weekday night from 9:30 to 12. E. C. BOWERS, Manager.

HOTEL LENOX COR. THIRD AND MAIN STS. Portland's Latest and Most Modern Hotel. New Building, conveniently located, fitted with the latest designed furniture, hot and cold water in every room, private baths, modern Grill, long distance telephone, free bus, sample room, free from noise, facing plaza. Rates \$1 and up.

A COMFORTABLE SHIRT. In the summer season the shirt becomes the most conspicuous part of man's attire. FOR A SHIRT OF COMFORT AND CONVENIENCE SEE The Jacobs Shirt Co. 2914 Stark St., Bet. Fourth & Fifth, Portland, Oregon.