

# NEWS AND NOTES OF AUTO WORLD

Latest Bits of Interesting Information About Touring Cars and Their Drivers.

Plain-water is excellent for use in the tank and radiator.

There are more limousine cars in Chicago than in any other city in the United States.

There are approximately 65,000 motorcyclists in Great Britain and their ranks are constantly increasing.

A four-day, sealed-boguet endurance run will be held by the Automobile club of America near New York June 19 to 22.

The Automobile club of Philadelphia now has over 400 members, having gained nearly 100 since the annual meeting in March.

One of the largest department stores at Brooklyn, N. Y., has decided to sell all its horses and install automobile delivery wagons.

With a membership of over 700 the Buffalo, N. Y., Automobile club is the second largest individual automobile club in the world.

The supervisors of Alameda county, Cal., have purchased a 40-horse-power touring car for the use of the sheriff in his official duties.

In recent anti-skid trials in England

a six-wheeled bus was the only vehicle of its class which did not skid on the sudden application of brakes.

Twenty-seven American machines have been entered for the 4,000-mile gold cup tour of Europe. The contestants will sail from New York June 20.

The recent lowering of the Boston-New York record by a 30-horse-power touring car is regarded as an argument in favor of the practicability of lighter cars.

So converted to motoring are Philadelphia society folk that there were but four coaches in line in the annual coaching parade of the Four-in-Hand club.

The Quaker City Motor club has abandoned its plan for a hill climb on Memorial day and instead will have a three-day run to Wilkes-Barre, Pa., and return.

Recent experiments on shallow-draft stern-wheel motor boats have indicated that the stern wheel is much more efficient in shallow water than the screw propeller.

The New Jersey state department of motor vehicles has purchased a car capable of a speed of 65 miles an hour for the use of its officers in running down law-breakers.

Cortland Field Bishop, president of the Aero Club of America, who recently sailed for Europe, will devote a large amount of time to automobile touring, particularly in the Alps.

In a race between a touring car and an express train from Hazleton to Wilkes-Barre, Pennsylvania, 14 miles, the former, driven by its owner, A. J. Depew, won by a good lead.

An expert has figured that the impact of a touring car running at 40 miles an hour striking an immovable object is equal to that which it would receive in a fall from a skyscraper.

Plans are being formulated by the Automobile club of Pittsburg for a run,

which will include a trip to the Jamestown exposition. It is expected that fully 50 machines will be entered.

Flatly refusing to pay the high prices demanded by the local branch of the Standard Oil company, four Philadelphia garage owners forced the officials of the trust to meet their figures.

Queen Amelia, of Portugal, in addition to being a physician and a writer of note, is an ardent motorist, having driven her big touring cars over 60,000 miles without the aid of a chauffeur.

Appropos of the fair motorist's accessories, certain clever milliners are providing skillfully shaped hats with adjustable brims, that can be turned over the back of the head, completely covering the hair.

An incandescent lamp, designed especially for automobiles and motorboats, which comes from Germany, may be operated by storage batteries of low

(Continued on Page Twenty.)

## A GROWING INDUSTRY

A Large Factory Devoted to Repairing and Remodeling Autos.

The Pullman Auto Car company has now on hand undergoing repairs 30 automobiles of various makes and values.

The automobile business has grown so extensively in the northwest that it is not surprising that an industry should be established whose sole business is the repairing and remodeling of automobiles, and Portland should be proud that A. D. Perkins, the president and manager, should select this city for the establishing of his large factory.

Probably some day Mr. Perkins will surprise Portland with an automobile factory, and it seems that there is no reason why Portland should not have such a factory in the near future.



N. A. King's New Forty-Horsepower Pierce Great Arrow.

## Seasonable Goods Auto Supplies

EVERYTHING TO EQUIP THE MOTOR CAR. OILS, JACKS, BATTERIES, TIRES, GOGGLES, ETC.



## BICYCLES NATIONAL and PIERCE

From \$25 to \$60

Sold on installments. Liberal allowance for old wheels.



## Garden Hose

This is becoming an important line with us. Our stock is fresh and prices low.

7/8¢ to 1 1/4¢ PER FOOT.

## Special Offer

Bring this ad and save a cent per foot.

## Ballou & Wright

86 SIXTH STREET. Opposite Wells-Fargo Building.

## Announcement

We have secured the agency for the "Tourist" Automobiles, made in Los Angeles, Cal., by the Auto Vehicle Co., established in 1903.

A successful car, old enough to be free from experiment and good enough to be unqualifiedly guaranteed for one year by its makers. A winning car, holding official records and trophies for endurance, speed, economy and climbing, won against the leading eastern models. A car with "honor in its own country." Delivery can be made by steamer every week. This eliminates the danger of freight blockades.



### THE TOURIST LINE FOR 1907

- Model K 7—(Our leader, the best two-cylinder car in the market).—Light touring car, 5-passenger, 2-cylinder, opposed horizontal motor, full 22 B. H. P. . . \$1,300
- Model K 7—Runabout, regular K chassis, with 2-passenger body and turtle back boot . . . . . \$1,225
- Model N 7.—A perfect touring car, 5 and 7-passenger, 4-cylinder, vertical 4 1/2 x 5-motor, 35-40 B. H. P. . . . . \$2,650
- Model N 7.—A high-powered, 2-passenger roadster, regular N chassis. . . \$2,550

The K 7 Demonstrating Car arrives Tuesday, May 28. The N 7, two weeks later.

Will mail advance folder upon request.

## Oregon Motor Car Co.

Temporary Location—108 Seventh Street

Opposite Public Library



Said Johnny Strong to Johnny Small:

"How is it that you aren't tall?"

Said Johnny Small to Johnny Strong:

"I'll show you why, so come along."

So Johnny Small took Johnny Strong

Into a garden where children thronged.

"Because," said Johnny—his voice did ring,

"I haven't got 'a Hutchins Roller Swing."

Safe and Satisfying **The Hutchins Roller Swing** Soothing and Strong

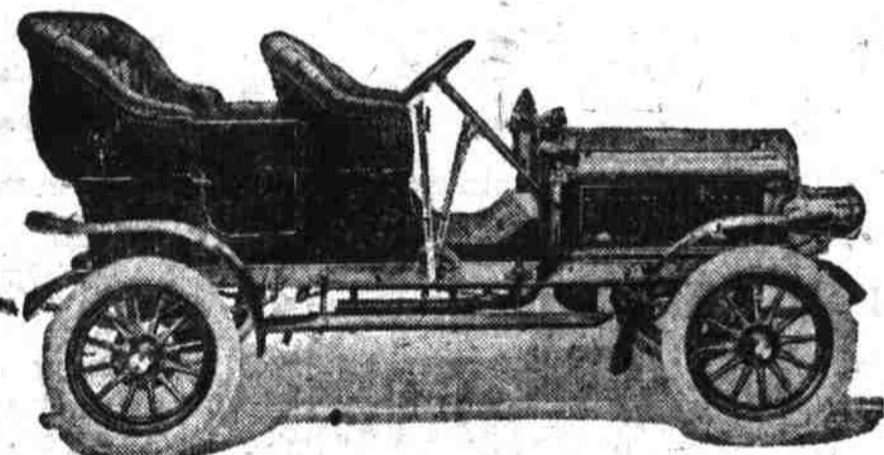
A Necessity as Well as a Luxury

## REIERSON MACHINERY CO.

182-4-6 Morrison Street

# FAMOUS AUTOMOBILES FOR PORTLAND

The *Mitchell*



An American Beauty

That Improves With Age

Good looks and good engines are desirable, but they are useless unless the car is "good throughout."

**THE MITCHELL** is especially constructed to distribute weight and strength in such a manner that every part is equally able to bear its burden. It has required the greatest scientific skill to accomplish this, but the result, as proven by

**THE MITCHELL IS A CAR OF PERFECT ENGINEERING BALANCE AND EQUAL PROPORTION THAT IMPROVES WITH USE—ASK AN OWNER**

A few deliveries can be made at once. Prospective buyers or persons sincerely interested are always welcome to demonstrations.

On account of the large demand for these popular machines and the many who are awaiting their arrival, we would suggest **ARRANGING FOR AN EARLY DEMONSTRATION** if you desire a car from this lot.

RUNABOUTS \$1100

TOURING CARS \$1950 and \$2150

A Full and Complete Line of **REPAIRS** Always on hand in Case of Accident

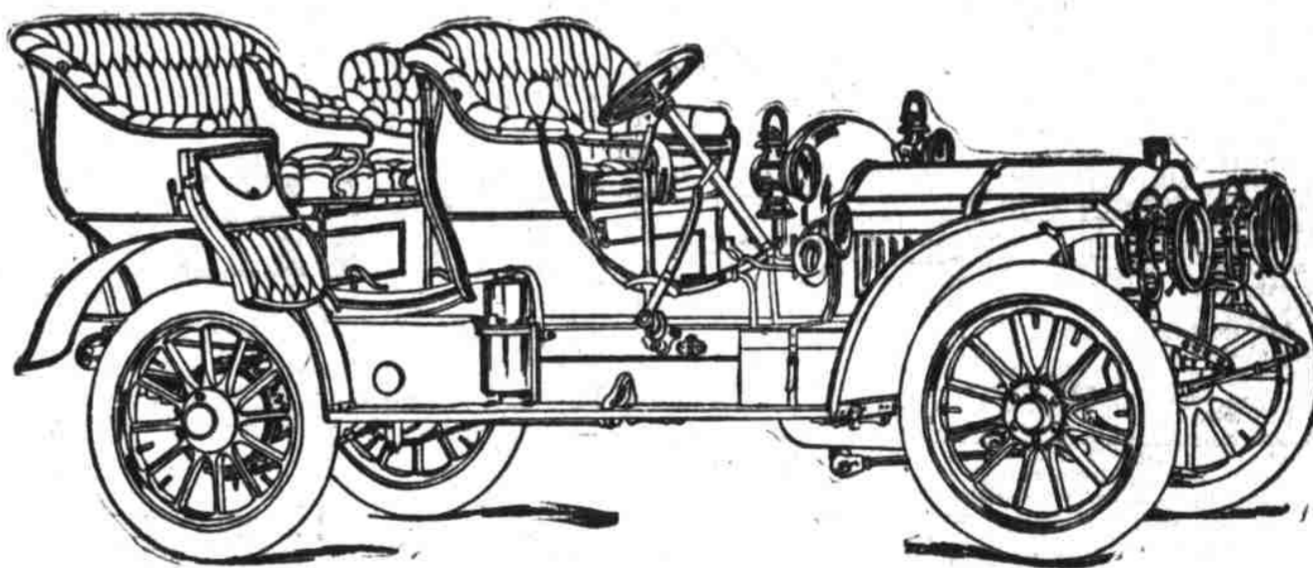


ALSO VEHICLES, IMPLEMENTS AND HARNESS

FIRST and TAYLOR

## NOTHING STINTED NOTHING SKIMPED

### NOTHING SPARED



## THE THOMAS FLYER

Hundreds of cars in daily use for months. Some have traversed thousands of miles over the roughest kind of roads. One made over 8,000 miles. Another over 10,000 miles. NOT ONE COMPLAINT of tire trouble.

The Thomas policy has never wavered, never changed, since the first Thomas car was built years ago. That fixed policy has always been to give ever a little more than the most captious buyer might expect. Isn't that policy splendidly exemplified in the Thomas Flyer? Does any other car compare with it in valuable features that contribute to structural perfection?

### LET US GIVE YOU A FEW—EVERY ONE ESSENTIAL

Two entirely separate and distinctive ignition outfits, spark plugs, wires and all—the imported Simms-Bosch high-tension Magneto, the Atwater-Kent spark generator. Four forward speeds instead of three; forged axles instead of tubing; disc clutch instead of cone; cross steering rod in front instead of rear; 36-inch wheels and tires instead of smaller; annual bearings on transmission; sprockets on rear wheels; roller bearings on front wheels; back-stop safety device; chain pulling forward on both bearings; anti-gear stripping device; extra large transmission gears that can't strip; dust-proof body, completely encased frame sides, seating seven passengers; two auxiliary revolving seats; curved aluminum dash; solid mahogany fittings; geared fan, pumps and magnetos; very efficient and expensive lubricating device; suitcase compartment; coat and package rack; trussed and reinforced frames; forged radius rods, etc., etc.—proving absolutely that the Thomas is the most costly chassis made.

# H. L. KEATS AUTO CO.

80 AND 82 SEVENTH STREET, PORTLAND, OREGON

Agencies Seattle, Tacoma, Spokane and All Important Centers