



OF PORTLAND OREGON Incorporated and Chartered under the Laws of the State of Oregon

ENSURES ALL KINDS OF LIVE STOCK AGAINST DEATH FROM ANY CAUSE

Responsible Agents Wanted Everywhere

J. F. Sherry President, Wm. H. Smith V. Pres., R. H. Green Cashier

MEMBER Portland Chamber of Commerce Portland Board of Trade

Ourges Trust and Savings Bank Portland Ore. The Redwood Company R. G. Dun & Co. Commercial Agency

We make no promise we do not fail We give you a square deal. Look us up

HOME OFFICE 6-7 J. LAFAYETTE BLDG. Cor. Washington and Sixth Portland Ore.



SIGNS OF SPRING Are in evidence on every hand now, and although "winter may linger in the way of Spring" you can't cling to your winter clothes much longer.

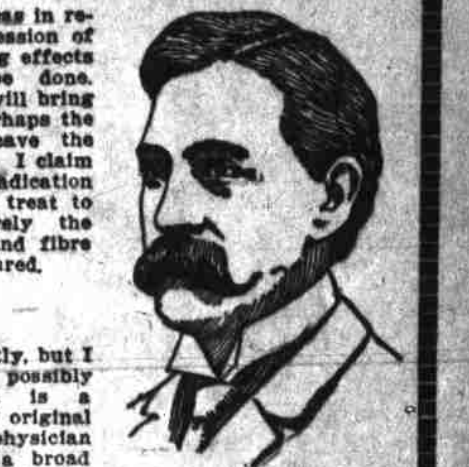
YOUR EYES Muscular insufficiency, which are usually ignored by most optometrists, are especially and carefully considered by us.

MORPHINE and other drug habits are positively cured by Dr. Sanderson's Compound

WOMAN A SPECIALTY MRS. S. K. CHAN The Chinese woman medical doctor in this city.

Munsell Optical Co. Dr. Deane Munsell, Refractor, Maskey Building, Portland, Oregon

Men's Diseases Cured to Stay Cured Different doctors have different ideas in regard to curing men.



DR. TAYLOR, The Leading Specialist

My Fee for a Cure is \$10.00 You Pay When Well

Varicocele Cured Without Cutting The time was when every man afflicted with varicocele had no choice other than to allow the disease to go on

THE DR. TAYLOR CO. CONSULTATION AND ADVICE FREE. My Fee Any, the Lowest, You Can Pay When Cured.

REGULATORS AND STEAMERS. Daily service between Portland and the Dalles, except Sundays.

Columbia River Scenery. Daily service between Portland and the Dalles, except Sundays.

UNION STATES NATIONAL BANK OF PORTLAND, OREGON. Transacts a General Banking Business.

LADD & TILTON BANKERS-Portland, Oregon. Transact a General Banking Business.

MERCHANT NATIONAL BANK-Portland, Oregon. Transacts a General Banking Business.

THE BANK OF CALIFORNIA-Established 1864. Head Office, San Francisco, California.

TRUST COMPANIES. PORTLAND TRUST COMPANY OF OREGON-The Oldest Trust Company in Oregon.

BONDS AND INVESTMENTS. MORRIS BROTHERS-Chamber of Commerce Building.

Overbeck, Starr & Cooke Co. GRAIN, PROVISIONS, COTTON, STOCKS AND BONDS.

PRINTING. THE MODERN PRINTERY-Artistic printing.

WHOLESALE JOBBERS. TER OREGON GREENS CO. (INC.)-GREENS.

MUSICAL. THE WEBBER STUDIO-Music, piano, voice.

OSTEOPATHIC PHYSICIANS. DR. LILLEBELLE PATTERSON, specialist in all rheumatic and chronic diseases.

PAINTING AND PAPERING. FOX & CO-Sanitar plumbers, 231 Second, bet. Main and Commercial.

PLUMBERS. FOX & CO-Sanitar plumbers, 231 Second, bet. Main and Commercial.

REAL ESTATE. PARRIS, WATKINS & CO., 250 ALDER ST.

RUBBER STAMPS. P. O. STAMP WORKS, 240 Alder st., phone Main 710.

ROOFING. ION ROOFING, guttering, repairing and general jobbing.

SEWING MACHINES. PRONE PATENT 2729 and I personally will call and repair your sewing machine.

STENOGRAPHERS. PUBLIC stenographer and typewriter.

SIGNS AND SHOW CARDS. POSTER & KLEINER-SIGNS.

SHOWCASES AND FIXTURES. SHOWCASES of every description.

SAFES. PORTLAND SAFE CO., sole agents for Hartley-Hall-Merrill safes.

TRANSFER AND HAULING. SAFES, pianos and furniture moved, packed ready for shipping.

TOWER SUPPLY. CLEAN TOWELS-Daily Wash, steam, soap, 1st and 2nd floors.

CLAIRVOYANTS AND PALMISTS. Always Consult the Best. PROFESSOR WALLACE.

PROFESSOR WALLACE. Portland's favorite clairvoyant, palmist and medium.

COAL AND WOOD. PORTLAND SAWMILL & BLDG WOOD CO.

WESTERN FEED & FUEL CO. House and blacksmith coal, coke, charcoal, kindling.

CLEANING AND DYING. CLOTHES cleaned and dyed. Dry cleaning.

CAFES. THE OFFICE-Cor. Washington st., phone Main 771.

DRESSMAKING. MRS. VAUGHAN, expert dressmaker.

DANCING. WOODWARD DANCING SCHOOL-Class Monday, Tuesday, Wednesday, Friday and night.

DENTISTS. DR. EARL C. McFARLAND, Dentist, S. Union 710-712 1/2.

EDUCATIONAL. OREGON EXPERT COLLEGE. Commercial, law, dentistry, etc.

ELECTRICAL SUPPLIES. M. J. WALSH CO., 511 Stark st.

ENGINEERING. O. H. GOSSETT, engineer and surveyor.

FENCE AND WIRE WORKS. PORTLAND WIRE & IRON WORKS.

GASOLINE ENGINES. GAROLINE ENGINEER. Stationary and marine electric equipment.

HARDWARE. PORTLAND HARDWARE CO., sole agents for quality goods.

HOTELS. HOTEL Portland, American plan, \$5 per day.

HOTELS. HOTEL Portland, American plan, \$5 per day.

INSURANCE. ISAAC L. WHITE, fire insurance.

LAND SCRIP. WANTED for sale-All kinds, including approved forest reserve scrip.

LEATHER AND FINDINGS. CHARLES L. MARTELL & CO., Front and Oak sts.

LAND SCRIP. WANTED for sale-All kinds, including approved forest reserve scrip.

PAINTS, OIL AND GLASS. P. E. BRANCH & CO., The Plummer Paint Co.

Without the aid of water advertising it might be hard for you to find the person you seek.

Without the aid of water advertising it might be hard for you to find the person you seek.

Without the aid of water advertising it might be hard for you to find the person you seek.

PERSONAL. NOTICE OF REMOVAL. A. Nelson, the furrier, will move from Lewis 212, looking for suitable location.

PERSONAL. HILDEN'S RHEUMATISM CURE-Sure cure for rheumatism.

PERSONAL. GERMAN books, magazines, novels, etc. German, English, French, Spanish, Swedish.

PERSONAL. MANLY vigor restored by Dr. Roberts' Nervine Globules.

PERSONAL. DR. BING CHONG, Importer Chinese root medicines.

PERSONAL. MRS. BROCKE, graduate massager; cabinet bath; facial; alcohol rub.

PERSONAL. DR. T. J. PIERCE, specialist, diseases of women; all irregularities corrected.

PERSONAL. MRS. VAUGHAN, expert dressmaker.

PERSONAL. DR. MRS. J. G. MACKIE, osteopath and electro-pathologist.

PERSONAL. MRS. RAYMOND, Masseuse, 209 1/2 Morrison st.

PERSONAL. MRS. LEBOY, 201 1/2 Alder st., suites 3 and 4.

PERSONAL. JOB KAKER, please call at Rossetti's and see S. Card.

PERSONAL. MRS. ETHEL WARD, manicurist and chiropodist.

PERSONAL. MRS. L. B. BAKER, please call at Rossetti's and see S. Card.

PERSONAL. MRS. ETHEL WARD, manicurist and chiropodist.

PERSONAL. MRS. L. B. BAKER, please call at Rossetti's and see S. Card.

PERSONAL. MRS. ETHEL WARD, manicurist and chiropodist.

PERSONAL. MRS. L. B. BAKER, please call at Rossetti's and see S. Card.

PERSONAL. MRS. ETHEL WARD, manicurist and chiropodist.

PERSONAL. MRS. L. B. BAKER, please call at Rossetti's and see S. Card.

PERSONAL. MRS. ETHEL WARD, manicurist and chiropodist.

PERSONAL. MRS. L. B. BAKER, please call at Rossetti's and see S. Card.

PERSONAL. MRS. ETHEL WARD, manicurist and chiropodist.

PERSONAL. MRS. L. B. BAKER, please call at Rossetti's and see S. Card.

PERSONAL. MRS. ETHEL WARD, manicurist and chiropodist.

FOR SALE-FARMS. BARGAIN-\$2,500-30 acres, 20 in crop, 10 in pasture.

FOR SALE-FARMS. 40 acres, 30 in cultivation, 10 in pasture.

FOR SALE-FARMS. 20 acres, all in cultivation, and 10 in pasture.

FOR SALE-FARMS. 40 acres, 30 in cultivation, 10 in pasture.

FOR SALE-FARMS. 20 acres, all in cultivation, and 10 in pasture.

FOR SALE-FARMS. 40 acres, 30 in cultivation, 10 in pasture.

FOR SALE-FARMS. 20 acres, all in cultivation, and 10 in pasture.

FOR SALE-FARMS. 40 acres, 30 in cultivation, 10 in pasture.

FOR SALE-FARMS. 20 acres, all in cultivation, and 10 in pasture.

FOR SALE-FARMS. 40 acres, 30 in cultivation, 10 in pasture.

FOR SALE-FARMS. 20 acres, all in cultivation, and 10 in pasture.

FOR SALE-FARMS. 40 acres, 30 in cultivation, 10 in pasture.

FOR SALE-FARMS. 20 acres, all in cultivation, and 10 in pasture.

FOR SALE-FARMS. 40 acres, 30 in cultivation, 10 in pasture.

FOR SALE-FARMS. 20 acres, all in cultivation, and 10 in pasture.

FOR SALE-FARMS. 40 acres, 30 in cultivation, 10 in pasture.

FOR SALE-FARMS. 20 acres, all in cultivation, and 10 in pasture.

FOR SALE-FARMS. 40 acres, 30 in cultivation, 10 in pasture.

FOR SALE-FARMS. 20 acres, all in cultivation, and 10 in pasture.

FOR SALE-FARMS. 40 acres, 30 in cultivation, 10 in pasture.

FOR SALE-FARMS. 20 acres, all in cultivation, and 10 in pasture.

FOR SALE-FARMS. 40 acres, 30 in cultivation, 10 in pasture.

FOR SALE-FARMS. 20 acres, all in cultivation, and 10 in pasture.

FOR SALE-FARMS. 40 acres, 30 in cultivation, 10 in pasture.

FOR SALE-FARMS. 20 acres, all in cultivation, and 10 in pasture.