

# STARTLING STORY OF MONEY'S GROWTH

## How Oregonians Are Speedily Turning Their Single Dollars Into Tens and Their Hundreds Into Thousands by Corraling the Timber Lands of the Pacific Coast.

This is not a story of surmise nor the hazard of a guess. It is an actual accomplishment. Its promises at the beginning are being realized from month to month. Its rewards have been pocketed in contentment and with expressions of satisfaction. The origins of its goldbeams are visible—seen at Portland's great sawmills and following the steamers slowly trudging their way against the current on the river's breast.

### The North Coast Co-Operative Lumber Company

An Oregon corporation, with its home in Portland, is the parent of the plan, and its fondest anticipations are being more than realized. The idea originated with Walter O. Jeffs and Thomas J. Hammer, two bright young business men of this city. Their homes were in the west—in Portland—and they were in constant contact with men who owned quarter sections of the finest timber in the world, but which was absolutely worthless so far as turning the property into money was concerned. Asked for the reason, the reply would be

"I Own One Quarter Section, But No One Wants it."

Why? Because the land was isolated—that is to say, not upon the bank of some navigable stream or on a line of railway, and no one wanted so small a tract. If the complaining one had owned 1,000 or anywhere above that number of acres, the doors of a ready market would ever be open to him, but the lone quarter section—it would not pay to build a logging road to that tiny tract. So the owner had his timber claim upon his hands; free from all incumbrances, it is true, but its intrinsic value to him was as that of a jackrabbit on the sagebrush plains of eastern Oregon. Discussing the subject between themselves, Messrs. Jeffs and Hammer agreed that this should not be, but that the remedy could only come from co-operation. Why would it not be possible to pool all these interests—to link them together in one strong body?

### Careful Thought and Study Matured This Plan, and the North Coast Co-Operative Lumber Company Was the Result.

The company was organized and incorporated under the laws of Oregon and capitalized at \$1,000,000 with 1,000,000 shares of the par value of \$1 each. These shares are sold in blocks of 100, payable \$4 down and \$4 per month, unless the subscriber to the capital stock desires to pay cash or make larger payments. The receipts of money from stock subscriptions are employed in the purchase of timber lands in bodies of sufficient consequence that they may be profitably lumbered—tracts of such magnitude that it will pay to construct logging roads to them or hold them for an advancement in value. For example, 40, 50 or more individual owners timber claims adjoining each other, no one of which is singly salable at any price. The North Coast Co-Operative Lumber Company buys up these various holdings, collectively amounting to perhaps several thousand acres, and there is an instant value created. Timbermen seeking large tracts are always greedy for such opportunities, and price is of little consequence, once availability is established, and this is done the moment a considerable tract of timber may be had in a united body.

### The North Coast Co-Operative Lumber Company Makes Known to Lumber Merchants That It Owns Such a Tract and It Is for Sale.

Bids are then received, and if satisfactory the deal is consummated and the profits of the transaction are divided among the stockholders of the company. This frequently amounts to many thousands of dollars, but if the bids are not satisfactory all are rejected and the timber held until an agreeable offer is received. If this is not had within a reasonable time, the company erects its own sawmill, lumbers the ground itself, makes its profits upon the manufactured product, and still owns the land. As all the timber lands of Oregon, when "logged off," are convertible into the most prolific farms, this is an asset that of itself would secure each shareholder against loss, if shielded by no other source of revenue.

### But Best of All, the Title Guarantee & Trust Company, One of Portland's Strongest Banks and Financial Institutions, Absolutely Guarantees 1,000 Feet of Timber Behind Every Dollar's Worth of the Company's Stock.

This makes certainty a thousand times more certain. It removes all possibility of loss and thoroughly eradicates every doubt of the security of investments made in the shares of the North Coast Co-Operative Lumber Company, and, more than that, establishes the reputation of the gentlemen at the helm of the concern. Were they not of upright character, not men of responsibility, all who know it best will readily understand that this conservative banking institution would keep its hands off the company and not so much as permit its name to be used in connection therewith.

### Timber Is the Wealth Producer of the World Today.

America wonders what will occur when its lumber supply is exhausted. That day is speedily approaching. It is not far distant. The forests of Maine have disappeared, Michigan's pines are a thing of the past, Wisconsin and Minnesota's timber lands are almost denuded. Cornstalk lumber and paper building material are spoken of as a last resort.

### Pacific Coast Forests Alone Are Left.

These are timbered as no other regions of the earth. The eyes of the lumber-makers of the country are upon this section—a region nowhere equaled upon this broad globe. Peerless are our pine trees, unmatched our stately larch and cedars. Every day's railroad trains carry the products of our lumber mills, the greatest on earth, beyond the Rockies to the Eastern consumer, and the sails and bottoms of every nation are here to transport Oregon's lumber, timbers, spars, piling and shingles to plethoric markets beyond the seas.

### From All Quarters of the World There Is a Cry for Lumber, and Only the Ears of the Pacific Coast Can Hear the Appeal and Respond to Its Desires.

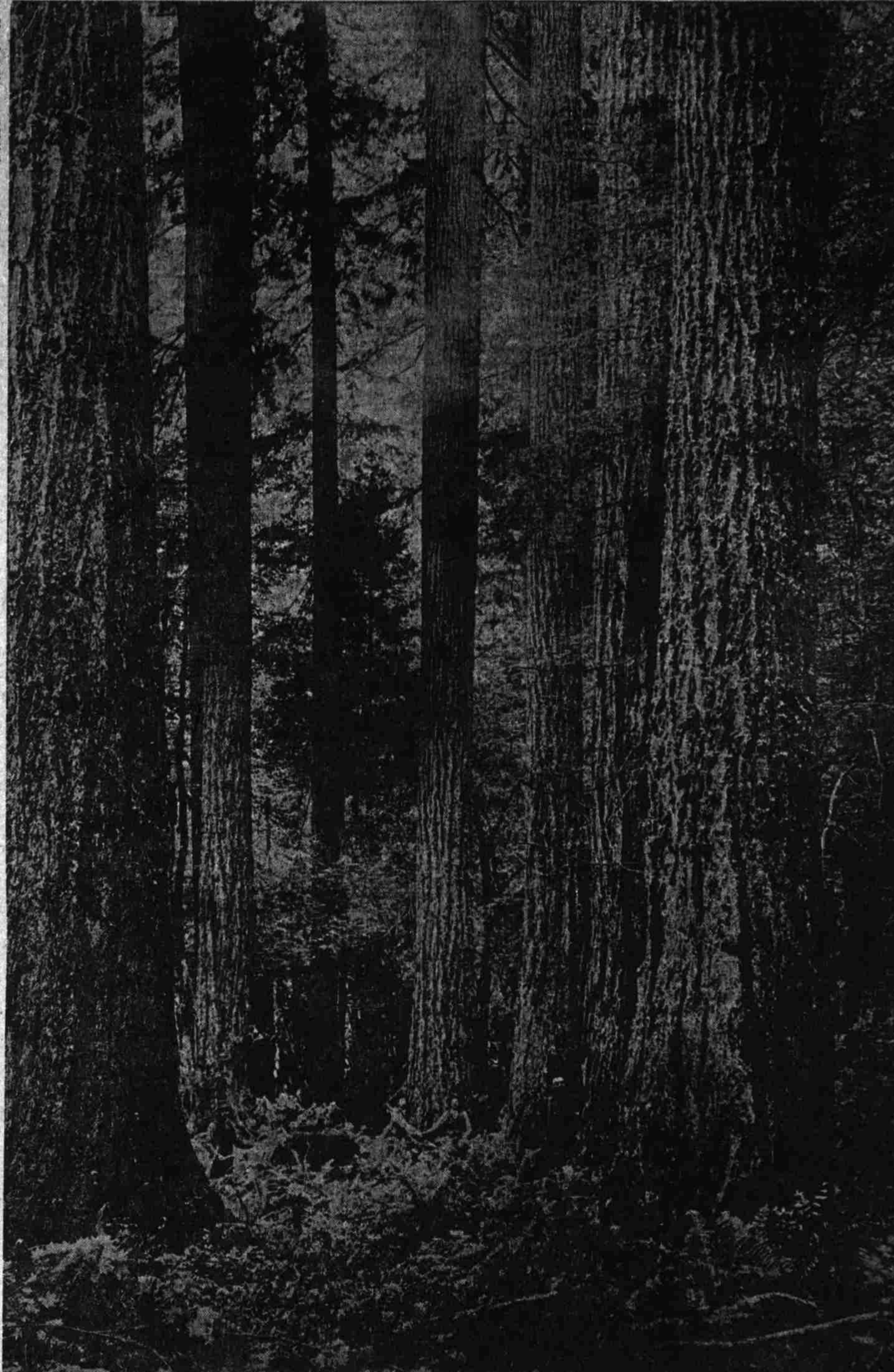
Well as it said in the January Cosmopolitan that "there is nothing in this country growing in value by leaps and bounds like timber properties. The pinch is coming. The prodigal waste of years is creating a paucity of desirable timber tracts. The famine isn't much yet; but in time, possibly within the next score of years, according to well-informed lumbermen, the real supply will be greatly diminished and prices will soar even more than they have in the last ten years. Weyerhaeuser is beginning to reap the fruits of his foresight. If he lives twenty years longer and retains what he has today, he will be wealthy beyond all computation. It is hardly necessary to be specific as to the increase in the value of timber lands, but just a couple of cases may be cited as instances, and for these cases John G. Staats, editor of the Lumberman's Review, and one of the best informed lumber experts in the country, is authority.

"According to Mr. Staats, one piece of yellow pine land, held ten years ago at a price of \$75,000, is today unobtainable at \$750,000. Another tract in West Virginia, covered with spruce and hemlock, and purchased five years ago for \$12,000, has recently been sold for \$500,000. The cases might be continued indefinitely, but these two are cited simply to show the way the timber tracts have increased in value. They are in no way remarkable. Hundreds of others just as impressive could be given."

### WHO IN PORTLAND, THE STATE OF OREGON, THE PACIFIC COAST, OR ANYWHERE BENEATH THE SUN DESIRES TO BECOME A PART OF OUR ORGANIZATION AND SHARE WITH US THE PROFITS OF THE TREMENDOUS AND CONSTANT ADVANCE IN LUMBER VALUES?

Whoever you are and wherever you are, we invite you to call upon or correspond with us. OUR SHARES ARE \$100 EACH, FULLY PAID UP AND NON-ASSESSABLE, AND THERE ARE BUT 40,000 OF THEM TO BE HAD AT ANY PRICE. YOU MAY PAY \$4 DOWN AND \$4 PER MONTH ON 100 SHARES, OR ALL CASH DOWN IF YOU SO DESIRE, AND THOSE INVESTING DURING THE MONTH OF MAY WILL BE ENTITLED TO SHARE IN THE OCTOBER DIVIDENDS.

We Have a Sawmill in Operation Now and It Helps the Dividends Along.



SAMPLE OF THE PINES OF OREGON OWNED BY THE NORTH COAST CO-OPERATIVE LUMBER COMPANY, PORTLAND, ORE

**NORTH COAST CO-OPERATIVE LUMBER CO. AND WASHINGTON STREETS PORTLAND, ORE.** REALTY TRUST BLDG., SECOND PORTLAND, ORE.

## WOULD CEDE ALL LANDS TO STATE

Democratic Plank Favoring Relinquishment of Property by Government.

## DROP EVERYTHING BUT MILITARY RESERVATIONS

Issue as to Method of Valuing Railroad Properties Was Only Quoted by Wall Street and Is Far From Being Dead.

(Washington Bureau of The Journal.) Washington, May 8.—The suggestion has been made to prominent Democrats that the coming national convention of that party adopt a plank favoring the ceding of all public lands, excepting military reservations and such other tracts as are necessary to the transaction of federal business, to the several states. It has been cited that this would be an issue, first, important enough to warrant making it a part of that party's national pronouncements; second, that it is distinctly in line with

the doctrine of that party, aligning exactly with the views of Mr. Bryan, who doubtless will be the next nominee, and agreeing with the present as well as historic position of most Democrats. State session of public lands would instantly draw a line of cleavage between the advocates of centralization and the advocates of recognizing the reserved rights of the states as defined by the organic law of the nation. The suggestion has been enforced by citing the bill offered in the last session by Senator Clark of Montana, and has been received by a number of representative men as worth careful consideration. Naturally, they are just now reticent about being quoted, but if the idea were pushed, doubtless they would come out in the open and make public their views.

**STOP GRUMBING**  
If you suffer from rheumatism or pains, for Ballard's Snow Liniment will bring quick relief. It is a sure cure for sprains, rheumatism, contracted muscles and all pains—and within the reach of all. Price 25c, 50c, \$1.00. C. B. Smith, Tenaha, Texas, writes: "I have used Ballard's Snow Liniment in my family for years and have found it a fine remedy for all pains and aches. I recommend it for pains in the chest." Sold by all druggists.

**Foster & Kleiser Signs**  
Woman loves a clear, rosy complexion. Burdock Blood Purifier purifies the blood, clears the skin, restores ruddy, sound health.

## CONTEST FOR LORDSHIP OVER AN IDAHO RIVER

(Special Dispatch to The Journal.) Boise, Idaho, May 8.—An animated session of the state land board was held yesterday. As the representative of the Payette Lumber company, Attorney O. O. Haga of Boise appeared before the board and asked practically absolute control of the Payette river, the company heretofore having partial control. Representing the White Pine company of Nampa, as its attorney, N. M. Rulick of Boise appeared to protest against the granting of the prayer of the Payette company on the ground that it had not made the improvements called for in its contract with the state and should not be given the monopoly of the river. The allegation transpired during the hearing that State Engineer Stephenson was sent by the state to make an investigation and report on the improvements, but went over the matter too hastily and it is alleged that his report to the land board was not in accordance with the facts as pointed out by the protesting company. The hearing is still on and if decided in favor of the Payette company a big fight will follow and the White Pine

**CASTORIA**  
For Infants and Children.  
The Kind You Have Always Bought  
Bears the Signature of *Dr. J. C. Watson*

company will seek to enjoin the state. Senator Born is the regular attorney of the Payette Lumber company, but for the purposes of the present case Mr. Haga was substituted.

## TWO BURGLARS CAUGHT BY NERVY DETECTIVE

(Special Dispatch to The Journal.) Spokane, May 8.—Two armed burglars were captured yesterday by Detective Briley, who twice knocked one down and shot the other. They had five fine revolvers and much ammunition, which they had taken from a hardware store. Briley entered the store while other officers stood guard outside. He saw one burglar go over the transom. The other drew a gun. Briley knocked it from his hand and captured him. Meanwhile the second burglar appeared at a back window and drew a gun. Briley at first thought he was an officer, but when he looked again he recognized the burglar and dropped him with a quick shot. He is not badly wounded. The burglars give their names as Frank Smith and Thomas C. Thompson.

## SWAMP LANDS TO ADD TO AREA OF COUNTRY

Washington, May 8.—If present plans for reclaiming swamp lands go through, areas which will be added to the production of the nation will be: Arkansas, 2,274 square miles, or 1,507,000 acres; Missouri, 2,219 square miles, or 1,452,000 acres; Louisiana, 15,938 square miles, or 10,194,200 acres; Mississippi,

**ANTI LEAN**  
Dr. Morrow's Anti-Lean  
MAKES LEAN PEOPLE FAT  
Through the nervous system. It is a purely vegetable compound. Contains no oils or fats or any drug that is injurious or liable to produce a habit.  
IT IS THE GREATEST TONIC IN THE WORLD  
Each bottle contains a month's treatment and costs \$1.50 at any first-class drug store. Prepared by the ANTI-LEAN MEDICINE CO. Oregonian Bldg., Portland, Or.

**BANK AND OFFICE RAILING WIRE AND IRON FENCING**  
Barbed Wire, Wire and Lawn Fencing, Poultry Netting, Etc.  
**PORTLAND WIRE AND IRON WORKS**  
SECOND AND EVERETT STS.  
Phone Main 2000.