

# PORTLAND HEIGHTS

**D. E. KEASEY & CO.**  
EXCLUSIVE AGENTS

117 lots in 7th street Terrace Addition.

**\$500 to \$2500**

**\$500 to \$750**

Lots in Greenway Addition, city water, sewer, gas and graded streets.

**\$5000**

100x115, best view on the Heights.

Neat cottage and full lot on car line; view can't be obstructed

**\$2600**

**\$7000**

Beautiful home, new house, 7 rooms, very fine view; full lot; house cost \$5,500; one of the best buys on the Heights; terms.

We have a number of beautiful bungalows from

**\$3750 to \$7000**

Two acres on the Heights; good view of city; close in

**\$6500**

We have two very fine houses, 6 and 7 rooms, very artistic large rooms, hardwood floors, furnace, fireplace and all other modern conveniences. The view from this property is simply grand. These are very choice. Price very reasonable. Terms to suit.

## D. E. KEASEY & CO.

Exclusive dealers in Heights property. Office on the Heights, opposite Ainsworth School. Main 2159.

### 50% PROFIT

IN SIGHT FOR THOSE WHO PURCHASE NOW IN

## WHITWOOD COURT

A 200-acre tract now on the market on a beautiful slope directly across the Willamette from St. Johns near Claremont Tavern, where all Northern Pacific trains stop, and facing a fine oiled boulevard 4 1/2 miles to Portland, and two electric lines now under way to the city. The new St. Johns ferry will soon make regular trips with freight and passengers. Full lots easily accessible with view equal to Council Crest, \$75.00 to \$300.00. Acreage \$100 to \$300, 10 per cent down, \$10 per month. Address

**R. Shepard & Co. or H. G. Ogden**

ST. JOHNS, OR.

One of whom can be found on grounds 2 to 5 afternoon.

## MT. SCOTT BARGAINS

If you are looking for suburban property, go to First and Alder, take a Mount Scott car, a 5c fare and a 30-minute ride will bring you to STEWART'S STATION. Our office is there, and we will show you bargains not to be had in any other part of the city.

### A FEW SAMPLES

- \$1,200—5-room modern cottage and 1 lot, right at station. \$400 cash and \$15 per month.
- \$1,250—5 rooms, modern, lot 60x100, near station. \$400 cash and \$15 per month.
- \$1,500—8-room modern house, large corner lot, vacant now. \$250 cash; balance monthly. A real snip.
- \$2,300—Small 6-room modern house, two large lots, in beautiful location. \$500 cash; balance monthly.

### THE ARROW REALTY CO.

Office Stewart's Station, Mount Scott Line. Open Sundays. Phone Tabor 600. Ford & Wells, Managers.

## COUNCIL CREST PARK

The most fashionable residence district in the city. Choice lots on graded streets near car line—\$500 each.

**Yerex Bros. Company**

302 Goodnough Bldg. Phone Main 133.

**\$1,000**

Will buy N. E. corner of E. 37th and Broadway.

**\$1,800**

Will buy 1-room house and three lots in Farrell's add.; bearing fruit trees.

**J. L. WELLS CO.**

Room 204, C. C. Bldg.

**\$5,000**—Entire block, E. 11th and Prescott.

**\$1,750**—Nice 5-room cottage, 979 E. Madison; \$750 cash, balance 4 years, 7 per cent.

**\$1,150**—East 34th and Grant, corner; \$350 cash, balance \$100 every six months, 6 per cent. Acre tracts on Base and Section Line Roads.

**TOM M. WORD Real Estate Co.**

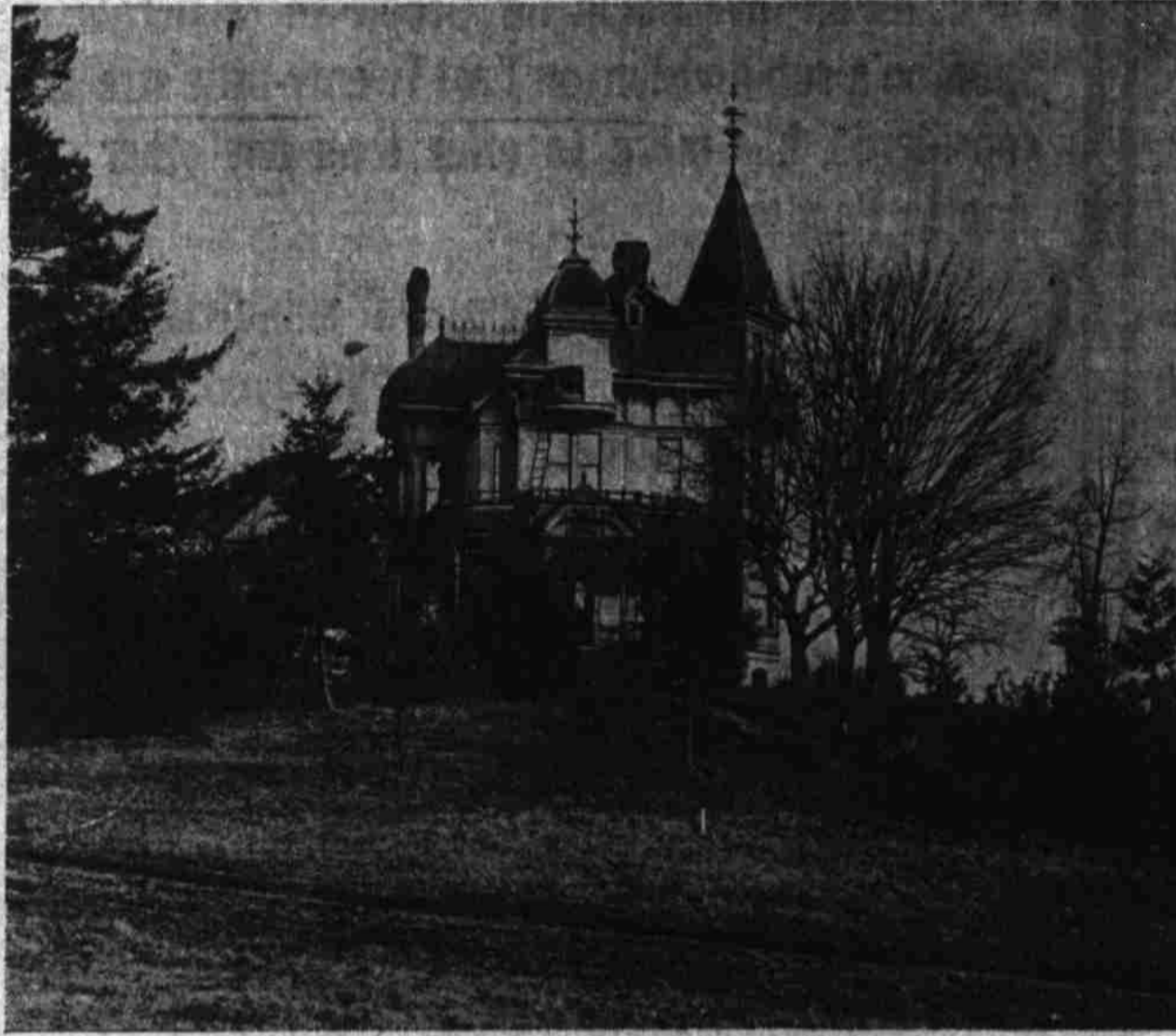
230 Stark St. Phone Main 4561.

**100x100—Union Avenue**

The best-located quarter on the market. It pays well and is a splendid proposition. We will be pleased to give you the particulars. Don't phone.

**SPRING AGENCY,**  
203 1/2 Stark St.

# Homes in Waverleigh



ONE OF THE HOMES NOW IN WAVERLEIGH.

No pioneering when you buy your home site in WAVERLEIGH. Hundreds of people now live there. They enjoy the fine views, high elevation, delightful surroundings, so should you. WAVERLEIGH homes rank with those in any district in Portland. They range from the \$20,000 mansion to the cozy castle of the workingman. WAVERLEIGH is the place for homes. It has all the conveniences of the city. Trolley cars go through WAVERLEIGH every ten minutes. Schools, sewers, graded streets, cement curbs and sidewalks, Bull Run water, gas, electric lights and telephones are a few of the conveniences in WAVERLEIGH. Now is the time to buy your home site. Lots from \$275.00 to \$500.00 and

**Only \$25.00 Down and \$10.00 a Month**

When you buy a WAVERLEIGH lot under the "Lemcke System" you get a National Bank guarantee that you can get your money back. Every

**Waverleigh Investment Guaranteed**

under the "Lemcke System." We are the only company that will give you such a guarantee. Any National Bank will do it for you under the "Lemcke System." You select the bank you want to make the guarantee and we will attend to the rest. This is a positive guarantee that if you want you can get back in six months every dollar we received from you. Let us tell you about the "Lemcke System." If you cannot call at our office write us.

### FREE GIFTS MAY 15

Don't forget that on May 15th some one is going to get absolutely free one of the choicest home sites in WAVERLEIGH. To fifty other persons we are going to make gifts. Go to WAVERLEIGH today and learn about our plans. Don't delay. Visit WAVERLEIGH today. Take the W. W. car to our branch office, Twenty-sixth and Franklin. The car passes the door. Agents always on the ground.

Our Waverleigh Office is on the Tract, 26th and Franklin Streets—Phone Sellwood 44

## South Portland Heights

NOW ON THE MARKET; THE CHEAPEST WEST SIDE PROPERTY; NO BRIDGES TO CROSS; NO DELAYS; THREE CAR LINES.

These lots can be numbered among the most sightly home sites in Portland today. Fine views; two car lines now pass through this tract. The new Salem road runs through the center. These lots are the cheapest close home sites on the West Side offered today in Portland. Easy terms; let us tell you about them. Let us show you.

Take F car on Third street; get off at Flower and Corbett, at our branch office.

**H. W. LEMCKE COMPANY,**

General Agents for L. A. Ralston.

Office at South Portland Heights, Flower and Corbett Sts. Phone Main 2757.

## Council Crest Park

PORTLAND'S FINEST DISTRICT.

Nowhere in the world can be found the equal of COUNCIL CREST. There is only one such viewpoint in the world and it is in Portland. Every lot commands an unsurpassing view of mountains, river or valley. Lots in this most exclusive residence section are now offered from \$300 to \$700 on easy terms. No bridges to cross. No delays. Cars run from the heart of the city to Council Crest Park. These fine view lots will soon double and treble in value. Consider how Portland Heights values have jumped, so will Council Crest. Everything for the home builder. Streets graded. Engineers are now planning an improved water system. It will be completed in a short time. The time to buy is now. Council Crest offers you an opportunity of a lifetime. Don't delay.

OUR OFFICE ON COUNCIL CREST—THE RED TENT AT THE BOARD WALK.

# H. W. LEMCKE COMPANY

Main 550—Home Phone A 2537

Main Office Sixth and Washington Streets

## LENOX

All the improvements furnished for \$300 per lot of 50x100; \$10 cash, \$10 per month.

## LENOX

We will build you a home on installments, and you're protected by building restrictions.

## LENOX

No boom prices. No speculation about it. Has 3 car lines and all adjacent properties are restricted.

## LENOX

Our local agents, Kergrove & Co., are at the Lemcke office at Anabel Station, Mount Scott carline, every day.

## LENOX

Go out Sunday to Anabel Station, Mt. Scott car, or Lemcke or Kergrove station, Woodstock car.

## A. C. Churchill & Co.

110 SECOND STREET.

## PORTER'S ADDITION

Is right on the W. W. carline, and don't have to use automobiles.

Is beautifully situated, with gentle slope towards the city.

Is high and sightly, overlooking city.

Is nicely parked with natural evergreens.

Has graded streets. Has building restriction of \$1,000—no shacks.

Has 15-foot building line limit. No stables within 60 feet of front of lots.

Don't have to wait for carline to be built.

Will soon have double track line.

Is in rapidly-growing district.

Price of lots will more than double in next year.

Size of lots 48x100 and 50x112 feet.

Price of lots \$250 up. Terms: \$10 down and \$10 per month.

SPECIAL INDUCEMENTS TO BUILDERS.

**J. Frank Porter**

Business Phone Main 1825. Residence Phone Sellwood 183.

222 Washington St.



This elegant home, situated in one of the most scenic locations in Portland, commands an unobstructed view of the city and mountains. The site comprises a full block, 200x200, well stocked with choice bearing nut and fruit trees, and all kinds of ornamental shrubbery, grass, etc. The grounds are fenced with a substantial woven fence. The house has eight large rooms, besides a full concrete basement, with stationary tubs, latest improved heating furnace, fruit, vegetable and fuel rooms. The large attic can be used as a billiard or dance hall. The reception room is finished in curly redwood. The parlor, dining room, kitchen and chambers in birdseye maple. The attic is finished in West Lake cedar. The entire house is strictly modern and absolutely first-class in every respect, and for the price is the best home on the market in Portland.

OREGON PACIFIC INVESTMENT COMPANY, 304 DEKUM BLDG.