

## PROBE DEEDS OF FIREMEN

Chief and Assistants Inquiring Into Charges Against Members of Department.

OFFICERS ARE HELD MOST RESPONSIBLE

In Engine-House on Second Street, Now Under Scrutiny, Were Two Captains and One Lieutenant Out of a Total of Nine Men.

Sitting as a board of inquiry, Fire Chief Campbell, with his assistant chiefs and a member of the city's executive board, is making a thorough investigation of the charges against various members of the department, especially those of hose and chemical company No. 1, whose station is next door to police headquarters.

Chief Campbell declares that every detail of the charges will be fully investigated and that any one found guilty will be summarily punished. Last night's session of the board of inquiry continued until midnight.

The chief professes to preserve as secret the nature of the inquiry until all the charges have been thoroughly investigated and the men tried. He will then make out a complete report of the proceedings and submit it to the executive board. It will contain his recommendations with reference to punishment of those who are found guilty.

"We are making a thorough investigation," said Chief Campbell this morning, "and will leave nothing undone to find out those who are guilty. I contend that the captains and lieutenants who have been entrusted with the command of the various stations and in whom I have always had confidence are the ones who should be regarded as most guilty. It is their duty to know what is going on in their stations and to keep the battalion chief posted, and in that way I will know myself."

In the station near police headquarters, for instance, there were only nine men. Included in those nine were three officers, two captains and a lieutenant. It certainly seems to me that three officers in a company of nine should have known everything that went on and should have kept their superior officers posted. I hold that the officers are the ones most negligent and deserve punishment."

**Buildings for Forest Grove.**  
(Special Dispatch to The Journal.)  
Forest Grove, Or., Feb. 7.—R. M. Dooley, president of the First National bank of Forest Grove, purchased the northwest corner of Main and North First avenue from Charles Miller yesterday, paying \$3,000 therefor. The lot is 50x50. Mr. Dooley will erect a fine brick building on the corner just as soon as he can get material, which will be in June some time, as it is almost an impossibility to get brick now. The new building will be occupied by the bank and store.

## LETTER-CARRIERS STAGGERING UNDER LOADS OF DELAYED MAIL

Five trainloads of eastern mail, the first to reach Portland since last Saturday, arrived in this city last night by steamer from Bonneville. There were more than 40 pouches of first-class mail and this was the first of the great mass to be distributed about the city. The newspapers and packages were carried out late this afternoon.

The arrival of such a large quantity made extra work for the men in the office and especially for the carriers. This latter class of workers for Uncle Sam were loaded down much in the same manner as they were in the holidays, when the bags in which they carry the mail were overflowing with letters and packages. It is expected that all of the mail will be distributed by evening.

### The Palais Royal Millinery.

The millinery for early spring trade is on hand for the tourist as well as for street wear. A somewhat sensational phase of it is the low prices we quote. Call and look them over. La Palais Royal, 376 Washington street.

## SPECIAL

### Benjamin's Business Suits

Consisting of fall and winter weights, single and double breasted, in fancy and neat effects, at

# 20% Discount

A word to the wise is sufficient

## BUFFUM & PENDLETON

311 Morrison St., Opp. Postoffice

NOTE—First Showing Spring Hats

# CLOSING OUT PRICES

OF THE

## Salem Woolen Mills Stock

## MEN'S SUITS AND OVERCOATS

Salem Woolen Mills Price \$25.00	SALE PRICE \$16.50
Salem Woolen Mills Price \$20.00	SALE PRICE \$13.50
Salem Woolen Mills Price \$15.00	SALE PRICE \$10.85
Salem Woolen Mills Price \$12.50	SALE PRICE \$ 7.95

CELEBRATED ROBERTS \$3 HAT Sale Price \$2.10

UNDERWEAR AT COST WORKING GLOVES AT COST  
MEN'S SHIRTS AT COST FANCY VESTS AT COST  
BLUE FLANNEL SHIRTS, SUSPENDERS NECKWEAR

## ALL AT COST

You All Know That Grand Old Motto of the MOYER:  
WHEN YOU SEE IT IN OUR AD IT'S SO

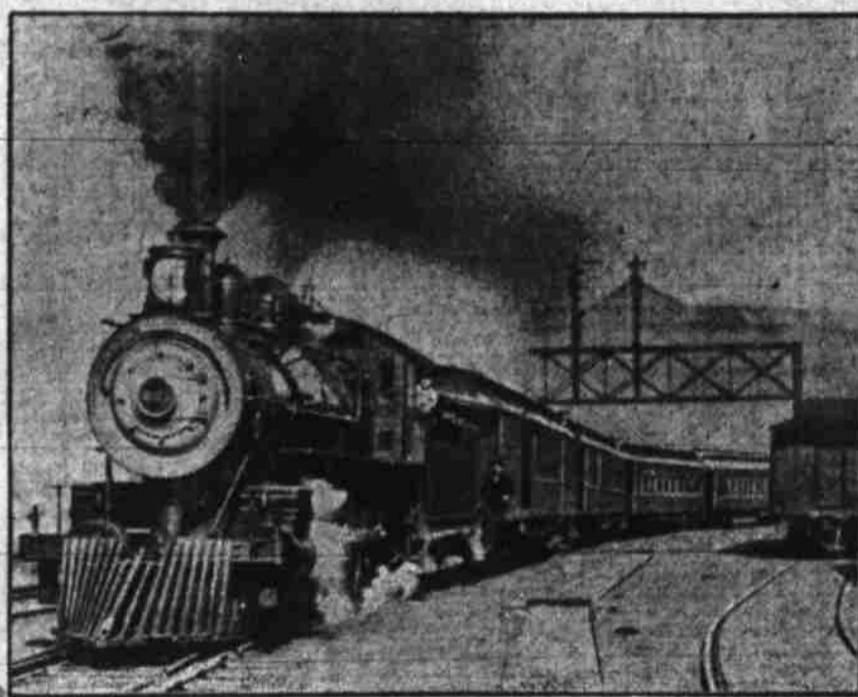
This motto will be freely and honestly carried out in this Sale— Would you save money? Come to this SALE

# MOYER THIRD & OAK

# A GRAND FREE EXCURSION

—TO THE—  
**LEE'S CREEK**

**GOLD MINES**



—AT—  
**MYRTLE CREEK**  
(OREGON)

**SUNDAY**

**MARCH 3, 1907**

Leaving Portland at 11:30 o'clock Saturday night, arriving at Myrtle Creek 6 o'clock Sunday morning. Returning, leaving Myrtle Creek at 10 o'clock Sunday night, arriving in Portland Monday morning at 7 o'clock. After eating breakfast in Myrtle Creek, you will be treated to a delightful stage ride of 12 miles up North Myrtle Creek and Lee's Creek, where you will spend the day in the mountains, communing with Nature and exploring the greatest deposit of Placer Gold on the Pacific Coast and probably the largest in the world. This wonderful treasure bed of Nature has been worked for the last 30 years, in a crude way, wherever it was possible to obtain a little water. Less than five acres have been worked, which has yielded a gross output of more than \$100,000 in coarse gold. By the first day of May we will have this property equipped to handle two acres of this fabulously rich gravel deposit every 30 days, sufficient water being developed to run from three to five Giants every day in the year. You must see the property, with its miles of ditch, flumes and tunnels, pipe lines, etc., to appreciate its wonderful possibilities. It contains nearly 1,000 acres of rich placer ground, millions of feet of the finest timber in the state, and only 12 miles from the main line of the Southern Pacific railroad.

**REMEMBER, This Trip, Including R. R. and Pullman Fare, as Well as Your Meals and Stage Fare Is ABSOLUTELY FREE**

To all who will sign an application to buy 5,000 shares or more of Lee's Creek Gold Mines at 2 cents per share, if subscribed before February 15, or 2 3/4 cents per share if signed any time after the 15th and before we leave for the property, on the following conditions: That if, after you have seen this property, and find it as represented in every respect, you will pay, before you leave the property, at least 25 per cent of your subscription in cash and the balance either cash when you return or in three equal monthly installments. YOU WILL BE UNDER NO OBLIGATION TO TAKE THIS STOCK UNLESS YOU FIND THE PROPERTY AS REPRESENTED. ISN'T THAT FAIR? IT IS OUR WAY OF DOING BUSINESS.

## Out-of-Town Purchasers

Can take advantage of this excursion by sending in their application and meeting our train at any of the following points: Portland, Woodburn, Salem, Albany, Junction City, Eugene and Roseburg. Bring or send your application to the office, or send us a card and we will send a representative, who will give you all desired information.

STOCK AND BOND DEPARTMENT

# Commonwealth Trust Company

Sixth and Ankeny Sts. PORTLAND, OREGON