

UNUSUAL ACTIVITY IN ALL KINDS OF REAL ESTATE



Double flats at East Second and Clackamas Streets, Belonging to John A. Patterson.

The week just closed witnessed the most widespread activity in the local real estate market of any period since the present heavy buying movement set in about two years ago.

There may have been a few weeks in which the aggregate of sales exceeded that of last week, but none has shown a greater variety of realty changing hands, or a more general inquiry on the part of prospective purchasers.

Another gratifying feature of the week's transactions was the large number of residence lots that changed hands.

Activity on Peninsula. In St. Johns and other parts of the lower peninsula the market was unusually active.

At the northeast corner of First and Jefferson, Frank Ludasher has sold to a local investor a 56x150 foot lot for \$25,000.

Transfer of the Kellig. The sale of the Kellig theatre to S. Morton Cohn for \$110,000 was consummated during the week.

W. H. Lemcke purchased yesterday from M. G. Thorsen the east side block bounded by Grand and Union avenues.

Dr. G. E. Watts, one of the leading physicians of Portland, has purchased a half interest in the Anti-Lean Medicine Co.

Methodist Episcopal—Rev. R. C. Blackwell, pastor. Sunday school, 9:45 a. m.; morning service, 10:30; Epworth League, 6:30 p. m.; evening service, 7:30.

St. Paul's Episcopal—Rev. P. K. Hammond, pastor. Holy communion, 8 a. m.; Sunday school, 10 a. m.; morning prayer and sermon, 11; evening prayer and sermon, 5.

First Baptist—Rev. Henry B. Robbins, pastor. Morning service, 10:30; Sunday school, 12 m.; Junior B. Y. F. U., 3 p. m.; B. Y. P. U., 8:30 p. m.; evening service, 7:30 p. m.

Partridge School Debate. Oregon City, Jan. 26.—The Partridge school held a debate last evening.

Progress of Languages. There has been a remarkable increase in the number of people who speak English since the first of the nineteenth century.

At the northeast corner of First and Jefferson, Frank Ludasher has sold to a local investor a 56x150 foot lot for \$25,000.

At the northeast corner of First and Jefferson, Frank Ludasher has sold to a local investor a 56x150 foot lot for \$25,000.

At the northeast corner of First and Jefferson, Frank Ludasher has sold to a local investor a 56x150 foot lot for \$25,000.



New Business Block, Built by J. F. Shea, at a Cost of \$75,000, on the Northwest Corner of Second and Ankeny Streets.

At the northeast corner of First and Jefferson, Frank Ludasher has sold to a local investor a 56x150 foot lot for \$25,000.

Transfer of the Kellig. The sale of the Kellig theatre to S. Morton Cohn for \$110,000 was consummated during the week.

W. H. Lemcke purchased yesterday from M. G. Thorsen the east side block bounded by Grand and Union avenues.

Dr. G. E. Watts, one of the leading physicians of Portland, has purchased a half interest in the Anti-Lean Medicine Co.

Methodist Episcopal—Rev. R. C. Blackwell, pastor. Sunday school, 9:45 a. m.; morning service, 10:30; Epworth League, 6:30 p. m.; evening service, 7:30.

St. Paul's Episcopal—Rev. P. K. Hammond, pastor. Holy communion, 8 a. m.; Sunday school, 10 a. m.; morning prayer and sermon, 11; evening prayer and sermon, 5.

First Baptist—Rev. Henry B. Robbins, pastor. Morning service, 10:30; Sunday school, 12 m.; Junior B. Y. F. U., 3 p. m.; B. Y. P. U., 8:30 p. m.; evening service, 7:30 p. m.

Partridge School Debate. Oregon City, Jan. 26.—The Partridge school held a debate last evening.

Progress of Languages. There has been a remarkable increase in the number of people who speak English since the first of the nineteenth century.

At the northeast corner of First and Jefferson, Frank Ludasher has sold to a local investor a 56x150 foot lot for \$25,000.

At the northeast corner of First and Jefferson, Frank Ludasher has sold to a local investor a 56x150 foot lot for \$25,000.

At the northeast corner of First and Jefferson, Frank Ludasher has sold to a local investor a 56x150 foot lot for \$25,000.

At the northeast corner of First and Jefferson, Frank Ludasher has sold to a local investor a 56x150 foot lot for \$25,000.

At the northeast corner of First and Jefferson, Frank Ludasher has sold to a local investor a 56x150 foot lot for \$25,000.

Transfer of the Kellig. The sale of the Kellig theatre to S. Morton Cohn for \$110,000 was consummated during the week.

W. H. Lemcke purchased yesterday from M. G. Thorsen the east side block bounded by Grand and Union avenues.

Dr. G. E. Watts, one of the leading physicians of Portland, has purchased a half interest in the Anti-Lean Medicine Co.

Methodist Episcopal—Rev. R. C. Blackwell, pastor. Sunday school, 9:45 a. m.; morning service, 10:30; Epworth League, 6:30 p. m.; evening service, 7:30.

St. Paul's Episcopal—Rev. P. K. Hammond, pastor. Holy communion, 8 a. m.; Sunday school, 10 a. m.; morning prayer and sermon, 11; evening prayer and sermon, 5.

First Baptist—Rev. Henry B. Robbins, pastor. Morning service, 10:30; Sunday school, 12 m.; Junior B. Y. F. U., 3 p. m.; B. Y. P. U., 8:30 p. m.; evening service, 7:30 p. m.

Partridge School Debate. Oregon City, Jan. 26.—The Partridge school held a debate last evening.

Progress of Languages. There has been a remarkable increase in the number of people who speak English since the first of the nineteenth century.

At the northeast corner of First and Jefferson, Frank Ludasher has sold to a local investor a 56x150 foot lot for \$25,000.

At the northeast corner of First and Jefferson, Frank Ludasher has sold to a local investor a 56x150 foot lot for \$25,000.

At the northeast corner of First and Jefferson, Frank Ludasher has sold to a local investor a 56x150 foot lot for \$25,000.

At the northeast corner of First and Jefferson, Frank Ludasher has sold to a local investor a 56x150 foot lot for \$25,000.

At the northeast corner of First and Jefferson, Frank Ludasher has sold to a local investor a 56x150 foot lot for \$25,000.

At the northeast corner of First and Jefferson, Frank Ludasher has sold to a local investor a 56x150 foot lot for \$25,000.

At the northeast corner of First and Jefferson, Frank Ludasher has sold to a local investor a 56x150 foot lot for \$25,000.

At the northeast corner of First and Jefferson, Frank Ludasher has sold to a local investor a 56x150 foot lot for \$25,000.

At the northeast corner of First and Jefferson, Frank Ludasher has sold to a local investor a 56x150 foot lot for \$25,000.

At the northeast corner of First and Jefferson, Frank Ludasher has sold to a local investor a 56x150 foot lot for \$25,000.

Transfer of the Kellig. The sale of the Kellig theatre to S. Morton Cohn for \$110,000 was consummated during the week.

W. H. Lemcke purchased yesterday from M. G. Thorsen the east side block bounded by Grand and Union avenues.

Dr. G. E. Watts, one of the leading physicians of Portland, has purchased a half interest in the Anti-Lean Medicine Co.

Methodist Episcopal—Rev. R. C. Blackwell, pastor. Sunday school, 9:45 a. m.; morning service, 10:30; Epworth League, 6:30 p. m.; evening service, 7:30.

St. Paul's Episcopal—Rev. P. K. Hammond, pastor. Holy communion, 8 a. m.; Sunday school, 10 a. m.; morning prayer and sermon, 11; evening prayer and sermon, 5.

First Baptist—Rev. Henry B. Robbins, pastor. Morning service, 10:30; Sunday school, 12 m.; Junior B. Y. F. U., 3 p. m.; B. Y. P. U., 8:30 p. m.; evening service, 7:30 p. m.

Partridge School Debate. Oregon City, Jan. 26.—The Partridge school held a debate last evening.

Progress of Languages. There has been a remarkable increase in the number of people who speak English since the first of the nineteenth century.

At the northeast corner of First and Jefferson, Frank Ludasher has sold to a local investor a 56x150 foot lot for \$25,000.

At the northeast corner of First and Jefferson, Frank Ludasher has sold to a local investor a 56x150 foot lot for \$25,000.

At the northeast corner of First and Jefferson, Frank Ludasher has sold to a local investor a 56x150 foot lot for \$25,000.

At the northeast corner of First and Jefferson, Frank Ludasher has sold to a local investor a 56x150 foot lot for \$25,000.

At the northeast corner of First and Jefferson, Frank Ludasher has sold to a local investor a 56x150 foot lot for \$25,000.

At the northeast corner of First and Jefferson, Frank Ludasher has sold to a local investor a 56x150 foot lot for \$25,000.

At the northeast corner of First and Jefferson, Frank Ludasher has sold to a local investor a 56x150 foot lot for \$25,000.

At the northeast corner of First and Jefferson, Frank Ludasher has sold to a local investor a 56x150 foot lot for \$25,000.

At the northeast corner of First and Jefferson, Frank Ludasher has sold to a local investor a 56x150 foot lot for \$25,000.

It's a Fact

That there is MORE MONEY IN IRRIGATED FRUIT LANDS than in all others.

The Reasons for This Are Ample

WHEN APPLIED TO ATTALIA, WHICH IS UNQUESTIONABLY THE FINEST TRACT OF IRRIGATED LAND THAT HAS EVER BEEN PLACED ON THE MARKET.

LOCATED in the Columbia River Valley, in the western part of Walla Walla county, opposite the Kennewick Irrigation Canal, twelve miles south of Pasco, and at the junction of the Washington & Columbia River, Oregon Railroad & Navigation Co. and Northern Pacific railways.

WATER SUPPLY is sufficient for three times the amount of land covered by the canal, supplied entirely by gravity.

CANAL is 14 miles long, 14 feet wide at the bottom, 32 at the top and 6 feet deep and has been in operation one year.

SOIL of the kind known as disintegrated, a salt or volcanic ash; it being the greatest fruit producer known, and is the richest agricultural soil found in the United States.

CLIMATE. The summer climate resembles that of the California valleys. The growing season is long; sunny days are plentiful; frosts are not known in early fall, and seasons are two to three weeks earlier than any other district in the Northwest.

PRODUCTIONS. For strawberries, fruit and nuts this land is unexcelled. It grows walnuts, pecans, almonds, peaches, apples, apricots, prunes, grapes, vegetables, tobacco, hay and all else with equal results.

TERMS are most favorable, being 25 per cent of the purchase price down, no payments for two years except interest and maintenance fee, and the balance in two, three and four years.

EMPLOYMENT. Considerable land has already been sold, hence persons desiring employment in leveling or clearing can obtain plenty of land under contract or on shares.

TRANSPORTATION. Owing to the superior shipping facilities mentioned above, it is possible to market produce as late as 7 o'clock p. m. and have shipments arrive in Seattle, Portland, Spokane and Tacoma and intermediate points the next morning.

Fortunes Are Being Made Every Year From Irrigated Lands

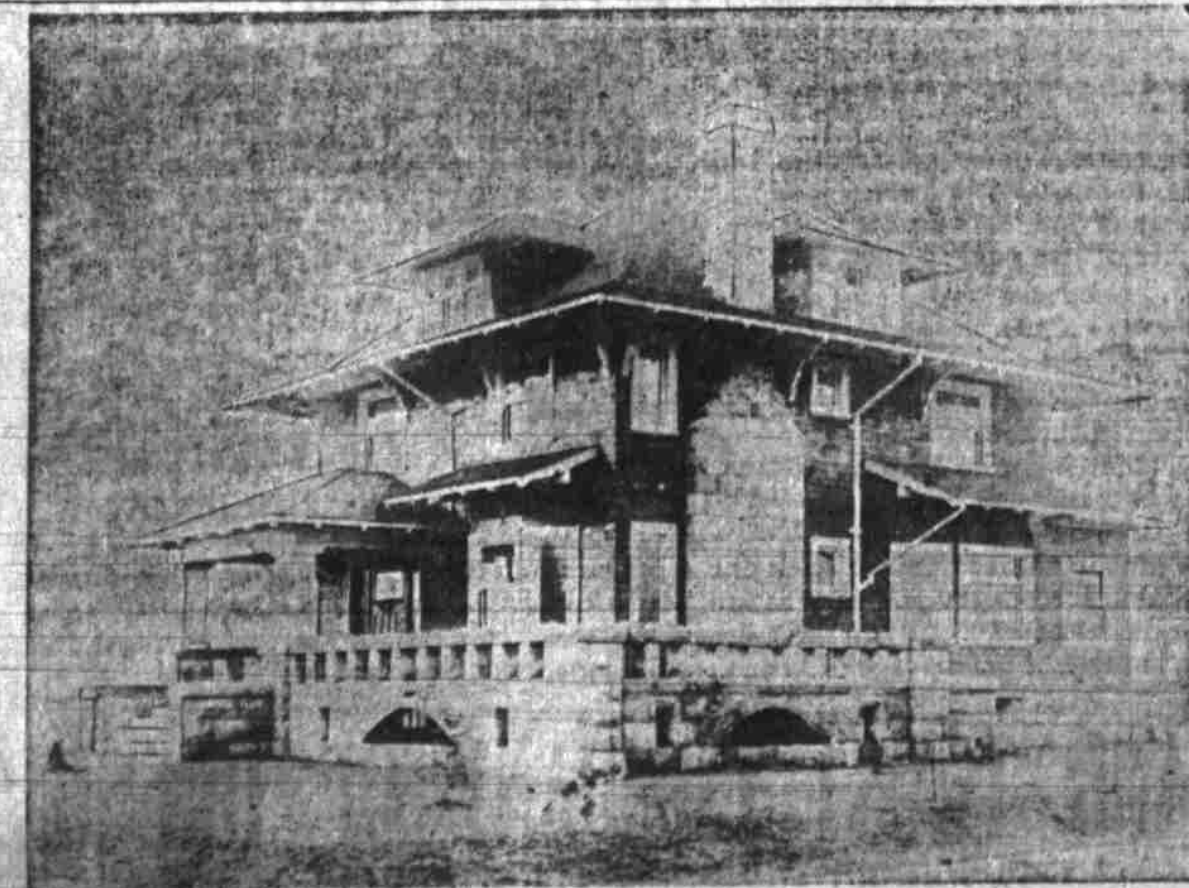
There are no crop failures and prices are always high. The above mentioned lands, with perpetual water rights, and lots in ATTALIA, are now being offered to the public.

For further particulars, maps and circulars, address

The Columbia Canal Co.

H. W. DAVIS, Secretary and Sales Agent

ATTALIA, WASH. Seattle Office, 509-510 Marion Bldg.



Residence of Charles Jennings, East Twelfth and Wasco Streets.

TEN THOUSAND CLEARED QUICKLY

M. G. Thorsen Sells Grand Avenue Block to W. H. Lemcke After Brief Ownership.

W. H. Lemcke purchased yesterday from M. G. Thorsen the east side block bounded by Grand and Union avenues.

Dr. G. E. Watts, one of the leading physicians of Portland, has purchased a half interest in the Anti-Lean Medicine Co.

Methodist Episcopal—Rev. R. C. Blackwell, pastor. Sunday school, 9:45 a. m.; morning service, 10:30; Epworth League, 6:30 p. m.; evening service, 7:30.

St. Paul's Episcopal—Rev. P. K. Hammond, pastor. Holy communion, 8 a. m.; Sunday school, 10 a. m.; morning prayer and sermon, 11; evening prayer and sermon, 5.

First Baptist—Rev. Henry B. Robbins, pastor. Morning service, 10:30; Sunday school, 12 m.; Junior B. Y. F. U., 3 p. m.; B. Y. P. U., 8:30 p. m.; evening service, 7:30 p. m.

Partridge School Debate. Oregon City, Jan. 26.—The Partridge school held a debate last evening.

Progress of Languages. There has been a remarkable increase in the number of people who speak English since the first of the nineteenth century.

At the northeast corner of First and Jefferson, Frank Ludasher has sold to a local investor a 56x150 foot lot for \$25,000.

At the northeast corner of First and Jefferson, Frank Ludasher has sold to a local investor a 56x150 foot lot for \$25,000.

At the northeast corner of First and Jefferson, Frank Ludasher has sold to a local investor a 56x150 foot lot for \$25,000.

At the northeast corner of First and Jefferson, Frank Ludasher has sold to a local investor a 56x150 foot lot for \$25,000.

At the northeast corner of First and Jefferson, Frank Ludasher has sold to a local investor a 56x150 foot lot for \$25,000.

CHRISTIAN ENDEAVOR WILL DIVIDE IN THREE

Congregational Young People Reorganizing at Oregon City—Today at Churches.

(Special Dispatch to The Journal.) Oregon City, Jan. 26.—Next Sunday evening the Christian Endeavor society of the Congregational church will complete its reorganization.

(Special Dispatch to The Journal.) Oregon City, Jan. 26.—The services at the churches for Sunday and the coming week are as follows:

(Special Dispatch to The Journal.) Oregon City, Jan. 26.—The Partridge school held a debate last evening.

(Special Dispatch to The Journal.) Oregon City, Jan. 26.—The Partridge school held a debate last evening.

(Special Dispatch to The Journal.) Oregon City, Jan. 26.—The Partridge school held a debate last evening.

Methodist Episcopal—Rev. R. C. Blackwell, pastor. Sunday school, 9:45 a. m.; morning service, 10:30; Epworth League, 6:30 p. m.; evening service, 7:30.

St. Paul's Episcopal—Rev. P. K. Hammond, pastor. Holy communion, 8 a. m.; Sunday school, 10 a. m.; morning prayer and sermon, 11; evening prayer and sermon, 5.

First Baptist—Rev. Henry B. Robbins, pastor. Morning service, 10:30; Sunday school, 12 m.; Junior B. Y. F. U., 3 p. m.; B. Y. P. U., 8:30 p. m.; evening service, 7:30 p. m.

Partridge School Debate. Oregon City, Jan. 26.—The Partridge school held a debate last evening.

Progress of Languages. There has been a remarkable increase in the number of people who speak English since the first of the nineteenth century.

At the northeast corner of First and Jefferson, Frank Ludasher has sold to a local investor a 56x150 foot lot for \$25,000.

At the northeast corner of First and Jefferson, Frank Ludasher has sold to a local investor a 56x150 foot lot for \$25,000.

At that time there were only 2,000,000 English speaking people. Now there are over 100,000,000.

Royal Neighbors—Oracle, Cora Neve; past oracle, Daisy Parker; vice-oracle, Thora Fairbanks; recorder, Mrs. Kate Durst; receiver, Ida Ward; chancellor, Hazel Butler; marshal, Mrs. Cunningham; inner sentinel, Alvira Smith; outer sentinel, Charles Butler.

Woodmen—Venerable consul, F. L. Ames; advisor, W. R. Cory; clerk, C. F. Butler; banker, E. C. Ward; secret, William Rees; watchman, John Beckner; sentry, Ernest Yates; manager, C. C. Cady.

ALL THE WORLD is a stage, and Ballard's Snow Liniment plays a most prominent part. It has no superior for Rheumatism, stiff joints, cuts, sprains and all pains. Buy it, try it and you will always use it. Anybody who has used Ballard's Snow Liniment is a living proof of what it does. Buy a trial bottle, 25c, 50c and \$1.00. For sale by all druggists.

Foster & Kleiser—Signs.