



MOUNT ANGEL COLLEGE AND SEMINARY

MOUNT ANGEL COLLEGE, a school for young men, offers the opportunity of a thorough and liberal education in the classical branches to all young men. An excellent business department for those desiring only the commercial branches.

MOUNT ANGEL SEMINARY, a school for the young women.

REV. F. FROWN EPPER, O. S. B., President, Mount Angel, Oregon.

WHITMAN COLLEGE, WALLA WALLA, WASH.



NORTH CAMPUS WHITMAN COLLEGE.

Offers four courses leading to B. A., B. S., B. L. and B. Mus. The work in these courses is thorough, modern and largely elective. Requirements for admission fully equal to those of Harvard and Yale. Library of 12,000 volumes, laboratories with excellent equipment, best gymnasium in the northwest in hands of an experienced Physical Director. Twenty-five acres of College grounds, Dormitories, Y. M. C. A. and Conservatory of Music.

The present departments comprise Philosophy, History, Economics, Greek, Latin, English, French, German, Hebrew, Mathematics, Astronomy, Biology, Geology, Chemistry, Physics and Biblical Literature.

REV. STEPHEN B. L. PENROSE, A. B., B. D., President.

MAGNIFICENT ENDOWMENT

(Continued from Page Eight.)

and gardening, bacteriology, drawing, military evolutions, physical culture, mining, literary commerce and music.

Especially do the agricultural college's sponsors speak of the advantages offered to girls for receiving the training that will make them efficient wives and transform the too often dreary farm home into an abode of culture and readiness for all the activities of life, social and practical and literary.

The Monmouth Normal school has a corps of 14 instructors and 312 students; the Ashland Normal school 10 instructors and 283 students; the Drain Normal school 8 instructors and 37 students and the Weston Normal school 11 instructors and 347 students.

The policy of the normal schools has been in the past in a measure to broaden the curriculum to include many branches not essentially called for in an institution for the exclusive training of teachers; that is, according to the general conception the country over. The Oregon Normal school essays to be more nearly a college than a distinct normal, for the reason that these institutions

have been founded in towns that must largely yield the efficiency of their public schools in order to the maintenance of the normals. Hence, the normals have been compelled by adjustment to the environment to add to their courses of study branches that properly would not be included in a normal school curriculum.

There are eight denominational schools offering preparatory and college work. Happily, President Campbell has taken a broad view of these institutions, and sought to articulate them so far as possible onto the general system of the state. There are no jealousies among their adherents for the state's university; on the contrary, they work in harmony and are rapidly making the educational advantages of this state rival those of older commonwealths of the east.

Willamette university, at the head of which is Rev. John Hamline Coleman, D. D., is located at Salem, the state capital; it has in the past struggled against the adversities of an ominous debt, but President Coleman has recently induced the members of the Methodist Episcopal church, which owns the school, to discharge the indebtedness, and he has lately announced that the prospects are good to secure \$250,000 as a permanent endowment. It is charmingly situated in the capital city, and numbers among

its alumni some of the leading men and women of Oregon.

Pacific university, at Forest Grove, is under the control of the Congregational church, and has lately acquired William Nelson Ferrin, LL. D., as president; his coming has stimulated the institution and the future is bright with hope of even greater success than that which has been attained in the past. There are 13 instructors and 225 students.

McKinnville college, patronized by the Baptist denomination, has 10 instructors and 204 students.

Albany college, which was founded by the Presbyterian church, enrolls a faculty of 11 and 131 students.

Philomath college, under the charge of the United Brethren church, provides seven teachers for its 35 students.

Pacific college, at Newberg, a Quaker institution in its inception, has seven instructors and 133 students.

Dallas college, with nine instructors and 130 students, is controlled by the United Evangelical denomination.

Columbia college, which utilizes what was formerly the Methodist Portland university, is owned by the Roman Catholic church, and has 18 instructors and 113 students.

This is but a partial list of the independent educational institutions of the state. There are the following in addition:

Academy of Our Lady of Perpetual Help, Catholic, Albany; Academy of the Sacred Heart, Catholic, Salem; St. Helen's Hall, Protestant Episcopal, Portland; Capital Business college, Salem; Holmes Business college, Portland; Christian Divinity school, Eugene; Portland Business college, Portland; Pendleton academy, Presbyterian, Pendleton; Mount Angel academy, Catholic, Mount Angel; Mount Angel college, Catholic, Mount Angel; Sacred Heart academy, Catholic, La Grange; Sisters of St. Charles, Catholic, Pendleton; St. Francis college, Catholic, Baker City; St. Paul's academy, Catholic, Portland; Behnke-Walker Business college, Portland; St. Mary's school and academy, Catholic, Portland.

One of the important educational institutions of this city is the Y. M. C. A., which has now 750 students in its many courses of study. It is claimed that nearly every instructor of manual training in the Portland public schools was trained in the Y. M. C. A., and that the present system of manual training in the schools here is due largely to the inception of the work by the Y. M. C. A.

The coming winter will see many of the local schools and colleges in fine new quarters. The Holmes Business college is to occupy a floor in the new building at Washington and Tenth streets and the Behnke-Walker Business college will move into the new "Elly" building at Stark and Seventh as soon as it is completed. The Portland Business college prospers in Eilers' building on Washington street.

The Portland schools are flourishing and offer many advantages for young people who desire training along practical lines.

Such schools as the Riverview Military academy, conducted by Arthur Newill, principal, afford opportunities for the young boy to receive his education along with the discipline that goes with training as a soldier.

St. Mary's academy and college is under the supervision of the Sisters of the Holy Names of Jesus and Mary. It provides academic, English, scientific and

classical courses, and was founded in 1853.

St. Helen's Hall has been in existence for many years under the ownership of the Protestant Episcopal diocese of Oregon. Its alumnae are among the prominent literary and society women of the state.

Portland academy is well equipped and is one of the best preparatory schools in the west.

Columbia college has laid the foundations for a broadly developed institution and is said to be destined to expand in the near future into a college of large scope.

The North Pacific Dental college gives a complete course in dentistry and allied sciences.

The Multnomah institute is one of the schools that gives an excellent commercial training under skilled instructors.

The Allen Preparatory school, located in Hawthorne Park, fits its pupils for eastern colleges and the naval and military schools.

Of no small pretensions is the Gillespie School of Expression, a commodious and refined institution at 524 Morrison street.

Hill Military academy is a school for boys, under the charge of Dr. J. W. Hill, and it is located in the locality of beautiful homes to the west from the Twenty-third street line of the Consolidated Railway company.

Although not in Oregon, Whitman college, Walla Walla, Washington, is one of the institutions in which the people of this state take pride. It is one of the strongest colleges west of the Mississippi river, and, besides having attained a high degree of scholarship, has an exhaustless store of historic lore as its inspiration. It is named after Marcus Whitman, who made the wonderful horseback ride across the continent in the early days, before the white man had made much impress in this part of the world, and saved Oregon to the Union. It was established by Cushing Eels and has honored the pioneers who laid its foundation stones.

Prohibitionists Study Tactics.
(Journal Special Service.)

Long Beach, Cal., Sept. 23.—Several hundred Prohibition workers from all parts of the United States met here this morning for a several days' conference, which has been arranged for the purpose of holding a conference concerning working methods and other subjects with a direct bearing upon the success of the Prohibition movement. The program is unusually interesting and includes many vital questions, like the Venango plan of work, how to advertise public meetings, how to do personal work, relations between local state and national organizations, methods of book-keeping for temperance committees, methods of raising funds, the Prohibition alliance, how to handle public speakers, etc.

GYMNASIUM PRIVILEGES FREE

The classes of the Holmes Business College are being held in the Y. M. C. A. Building, pending construction of new quarters.

By special arrangement we extend to our students all the privileges of gymnasium, natatorium, handball court, bath, reading-room, etc., shared with membership in the Y. M. C. A.

These special privileges are FREE—no extra tuition charge whatever.

Watch for announcement concerning our new location. Finest quarters in the city, being specially built and equipped for our use.

Write for information about commercial course, or call.

HOLMES BUSINESS COLLEGE
27-29 Y. M. C. A. Bldg., Portland, Oregon.

Willamette University

Nine schools and colleges. Forty-five professors and instructors. New and thoroughly modern laboratory equipment.

College of Liberal Arts

Increased its attendance 80 per cent during the past year.

OPEN SEPTEMBER 28.

For catalogue and particulars, address WILLAMETTE UNIVERSITY, Salem, Oregon.

PORTLAND BUSINESS COLLEGE

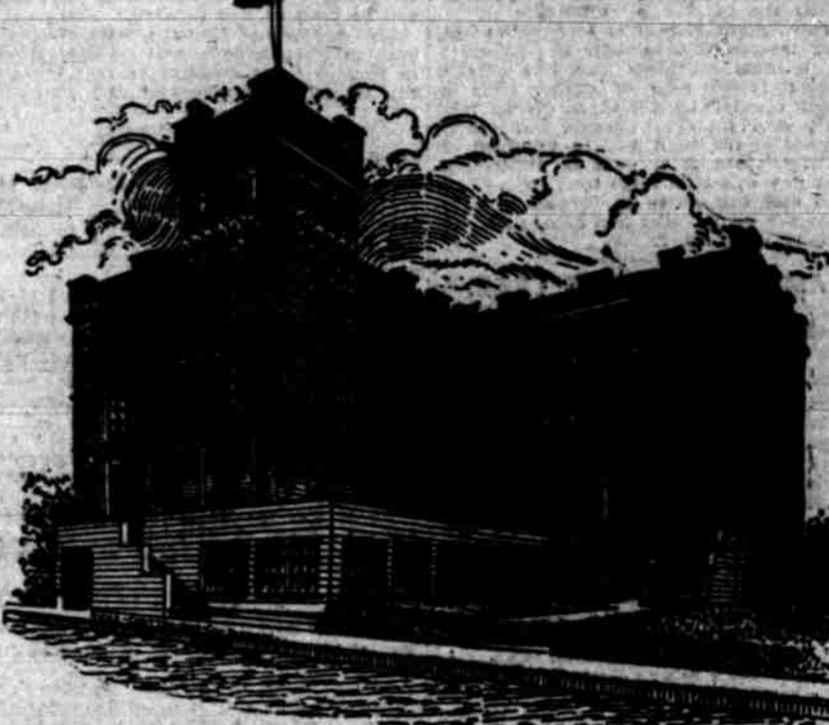


"THE SCHOOL OF QUALITY"

Offers full and complete courses in all the Commercial branches. Open all the year. Practical business taught in a practical way. Thorough instruction in all the modern methods of the office.

A. P. ARMSTRONG, L. L. B., Principal.

HILL MILITARY ACADEMY
PORTLAND, ORE.



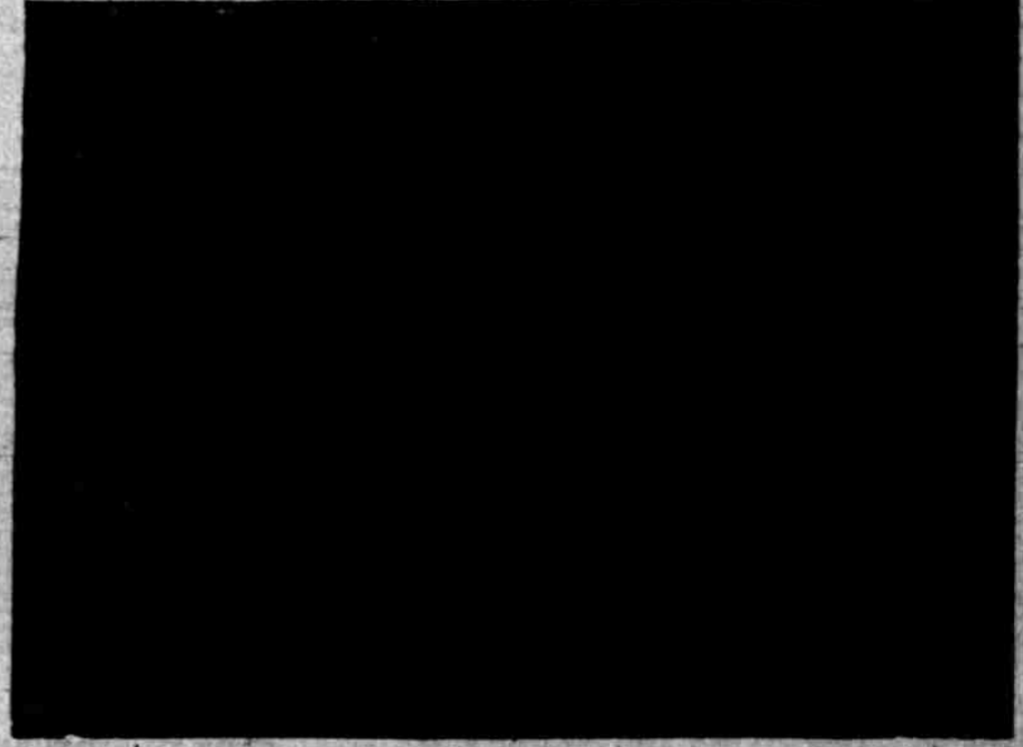
A boarding and day school for boys and young men. Boys of any age and degree of advancement received. Thorough preparation for the leading colleges and for a business education.

Military and manual training; splendidly equipped buildings; very superior faculty; every perfect facility for developing strong minds in sound bodies. Study, drill and play in proper proportions form the basis of curriculum.

HILL MILITARY ACADEMY

DR. J. W. HILL, Principal, Portland, Oregon

Medical Department of the University of Oregon, Portland



Offers a course covering four years, granting the degree M. D.

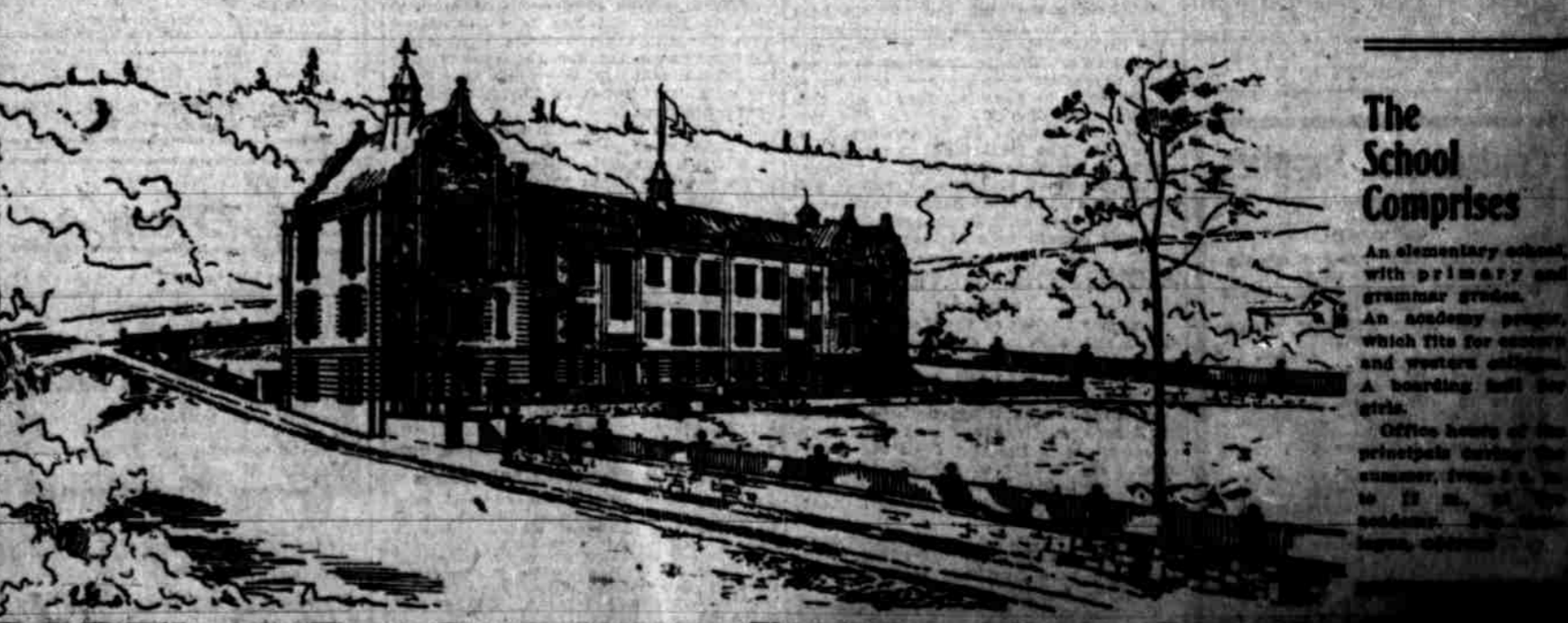
Simeon Edward Josephi, M. D., Dean

St. Vincent's, Good Samaritan and Multnomah county hospitals afford the most enlarged advantages for clinical instruction. Clinics every day of the week.



NORTH PACIFIC DENTAL COLLEGE, PORTLAND.

PORTLAND ACADEMY



The School Comprises

An elementary school, with primary and grammar grades. An academy proper, which fits for entry and western colleges. A boarding hall for girls.

Office hours of the principal during the summer, from 9 a. m. to 12 m., at the residence, 27th and Commercial streets, Portland.

PORTLAND ACADEMY, Thirteenth and Harrison Streets.