

GREAT SHOPS FOR HARRIMAN SYSTEM

Improvements aggregating more than \$250,000 for the railroad yards of the Harriman system at Albina are being completed. Three large structures have been reared and the machinery to equip them is being placed. A 22-stall extension to the roundhouse is finished, the big building that is to be used for a paint and coach repair shop is about ready, and the structure to be known as the machine shops has been reared.

The railroad system will soon have in Portland one of the finest shops in the west, where engines may be rebuilt on short notice and boxcars and coaches may be built on a large scale.

walls and steel structural material. For the present but one floor will be used, but later it is the purpose to build a gallery for the accommodation of small machines. There are 19 engine-pits in the shop, where the repair and construction work on locomotives will be done. With this number of stalls and the equipment of the shop, the company will be able to rebuild an engine in about 20 days. There will be one gigantic 120-ton electric crane in the same bay of the building where the engine pits have been built, which will be sufficient for handling the heaviest material and locomotives that will be



New Machineshop, Albina.

A visit to the carshops at Albina reveals the magnitude of the work undertaken. The large acreage the company holds is not taxed for room, although the capacity of the plant is being more than doubled. A series of brick structures cluster around the central point in close proximity, giving the shops the appearance of a great manufacturing plant, while beyond its yardage for buildings four to five times the size of those now used. All improvements recently undertaken have been of a permanent and modern type, indicating that the company is not only providing for the heavy requirements of the present, but is placing the nucleus around which there will be built one of the greatest construction and repair plants in the west.

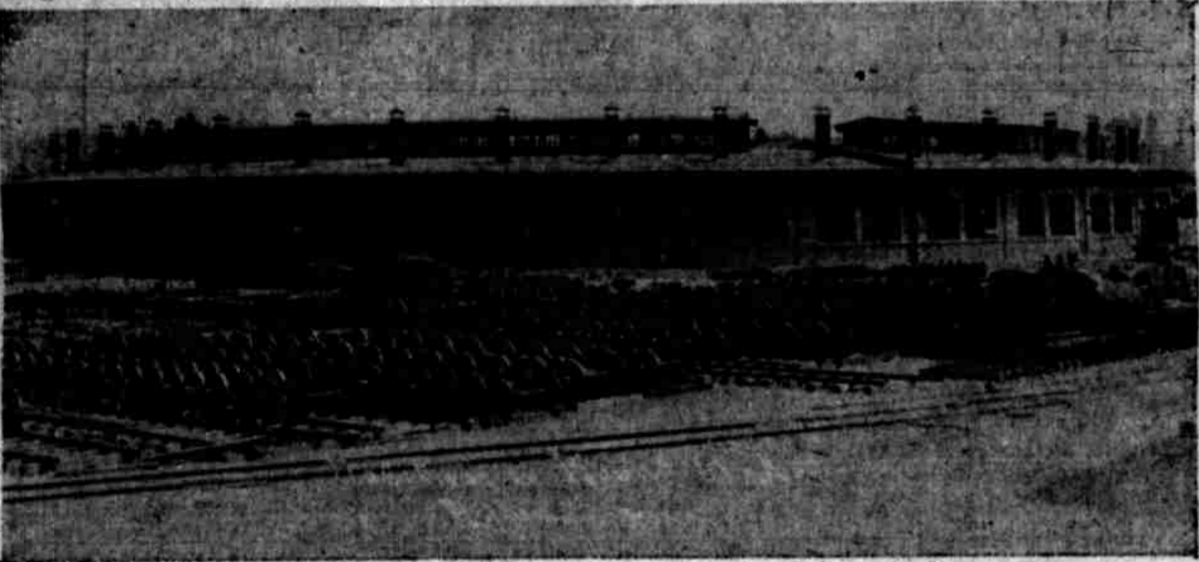
Great Buildings Erected.
Three main buildings have been erected to accommodate the new work. One is known as the machine shops, having a ground space of 160 by 326

feet, the brick walls being 40 feet high. The paint and coach repair shop is a building 80 by 544 feet, and the addition to the roundhouse has 22 new engine-stalls, giving to this place a total of 42 stalls. In addition a transfer pit has been completed, the pit being 80 by 675 feet, with the most modern arrangements for handling locomotives and cars.

Shop Airy and Comfortable.
The machineshop will be steam heated, lighted with electricity and made airy, sanitary and as comfortable as possible. Four pipe systems traverse the yards,

engines to expedite the work of getting up steam. The great transfer table has been finished. It is driven by steam, but later will be equipped with electric motor. This table has a length of 80 feet and operates over 675 feet of track, delivering engines or cars to any part of the machineshop, from one stall to another and to such parts of the grounds as border the pit. All the foundations for the transfer pit are concrete, and the great table handles the heaviest locomotive with ease.

Looking to Greater Improvements.
One of the largest Ingersoll-Sargent steam-driven duplex air compressors brought to this part of the country has been installed at the power house. It



Roundhouse Addition at Albina.

Three has been a rumor to the effect that the company would install its own power plant for generating electricity, which energy will be used by individual motors for most of the large machines of the shops, cranes and lifts. As power requirements will be heavy, this is an important feature, on which decision has been left until more urgent and immediate work has been performed. At a later date if it is found by the company that they can generate electric energy to advantage, rather than purchase from power companies, a plant will be erected according to the needs of the enlarged yards.

For Engine and Car Work.
The new machine-shop has heavy

one for compressed air, another for water, a third for steam heating and the fourth is a sewer system. Exhaust steam from the engines will be conducted to every building of the yards to heat it. Good city water is supplied to every structure also. A compressed air pipe line will be laid to every building of the entire inclosure so that any time this energy is desired for pneumatic hammers or other work, it may be had by tapping the mains.

will furnish air for any machine of the plant where it is needed. Being situated near the boilers where steam is generated there will be no loss of heat in transmission to the compressor, while the air lines are commodious and the friction will not cause an appreciable loss of energy in delivering air to any part of the grounds.

LIVESTOCK SHOW AT FAIR WILL SURPRISE ALL

Preparations Making for Great Exhibit of Cattle From Near and Far.

From now until September 19 the center of attraction at the exposition will be on the government peninsula, where Superintendent M. D. Wisdom and a corps of assistants are preparing for the opening of the greatest livestock show the west has ever seen. Tomorrow morning the stock will begin to arrive and by Wednesday it is expected that more than 95 cars of thoroughbred pedigreed stock will have been received and housed.

The first consignments will come from Spokane, which will have all told 12 cars of stock. W. M. Carruthers,

superintendent of H. W. Peel's Birch Hill farm, is here in advance of three cars, due to arrive tomorrow morning, containing noted shorthorns and Berkshire hogs. J. P. Graves will follow with two cars of shorthorns from the Walkaka farm. Two cars of Holstein cattle and one car of swine are on the way from the Hazelwood farm. Galbraith Bros., also of Spokane, are sending four cars of blooded horses.

Eighteen carloads of stock left the Minnesota state fair at Hamlin this morning, billed to Portland. Kansas City has 10 cars on the road, and 10 more will leave the California state fair at Sacramento tomorrow.

Steamer Telegraph for Astoria.

Round trip daily (except Friday). Leaves Alder street dock 7:30 a. m. Returning leaves Astoria 2 p. m. Arriving Portland 8:30 p. m. Sundays leaves Portland 8 a. m. Arrives Portland 9 p. m.

FEDERAL GRAND JURY HAS MUCH WORK TO DO

Returns Indictments Against Many People for Offending Against the Law.

In addition to its investigation of the land frauds, the federal grand jury has devoted some time to other offenses against the government, and a number of indictments have been returned. Four were presented at noon yesterday, as follows:

Edward Burns and P. J. Mulligan were indicted for counterfeiting; it is said the crime was committed in this city on July 25 of this year.

Bert Turnbau and William Bryan, for tearing down a rural mailbox near Tigardville.

Oregon Journal

Coupon—Free Hawaiian Trip

Honolulu, Hawaiian Islands

I vote for.....

This coupon must be voted on or before Sept. 17, 1905.

IN OUR DRAPERY DEPARTMENT

SPECIAL SALE

Commencing Monday and continuing for three days we will have a special sale in our Drapery and Bedding Depts.

IN OUR BEDDING DEPARTMENT

which will be a repetition of the matchless values offered in our sale of last week. In our windows we now show some of the attractive bargains embodied in the sale of these two departments.

Monday Tuesday Wednesday

Special Drapery Sale

A special sale of Manufacturers French Cretonne Samples. These pieces average 1½ yards in length, and will make up well into sofa pillows and bedroom coverings. Enough in one piece to make a fair sized cushion. Many beautiful patterns and colorings to select from. The prices of these samples range all the way from \$1.10 to \$1.95 each. During the 3 days they will be offered at

Special, 40c Each

Japanese Crepe in dainty floral designs and colorings, 30 inches wide, suitable for sash and light bedroom curtains—

Special 20c Yard

Dainty Chintz in rich floral designs and colorings, 30 and 36 inches wide. Suitable for light hangings and sash curtains—

Special 20c Yard

Special Sale of Comforts

An opportune time to secure good bedding value. Elastic felt Comforts, evenly filled with sanitary cotton, covered in silko-line. The comforts are full size, in many pretty colors and patterns. Monday, Tuesday and Wednesday—

Special, \$1.35

Navajo Rugs We Announce Arrival of New Consignment All Sizes

We have just received and are now showing many new and artistic creations in Navajo Rugs and Blankets, direct from Arizona and New Mexico. The work of this famous race of Indians stands in a class peculiar to itself, and excels the ex-



ceptions of all other Indian tribes. Sizes vary from twenty-four inches square to five by eight feet, thus making them suitable for sofa pillow covers, couch covers, floor rugs and lounging rugs. No two designs alike.

Navajo Rugs Most Fitting Souvenir of the West Many Designs

Attractive Iron Beds

A handsome array of iron beds. Our line is of such proportions as to give you practically an unlimited field to select from, all bright and new styles in plain or ornamental designs, with or without brass trimmings. Many of these beds are in three colors, and joints are all smoothly finished.

Safety Folding Beds

A most artistic and sanitary modern folding bed. Easy to manipulate, it is strong, absolutely safe and simple in its mechanism, a unique feature never conceded to the old-fashioned cumbersome folding bed. Where space is limited this bed should be given consideration, as when closed it occupies no more than wall area.

\$5.00 IN THIRTY DAYS. \$1.00 PER WEEK THEREAFTER

Buck's Ranges

These Are Our Terms on

Buck's Stoves and Ranges

Buck's Ranges

Most liberal are our terms on Buck's Stoves and Ranges. To all intending purchasers of a satisfactory range or stove, this offer of a Buck's, with their 57 years of success, coupled with this most easy payment system should be important items in the selection of a range.

TULL & GIBBS

+ COMPLETE +

HOUSE FURNISHERS