

FINE EXHIBITS ARE MUCH ENJOYED

Man's Ingenuity Shows Itself in Interesting Forms in Manufacturers' Building.

REMARKABLE VARIETY OF THE DISPLAYS SHOWN

Visitors Find Instruction and Entertainment in an Examination of the Wares Which Cover a Wide Range of Invention and Production.

An infinite variety of exhibits, more or less ingeniously presented to the eye of the curiosity seeker, makes the Manufacturers' building at the Lewis and Clark exposition one of the most interesting places on the grounds.

The hum of industry is heard from the moment one enters the south door, where the Portland Cordage company has a splendid display of hempen products, and machinery, including a modern spinning machine in operation.

There is practically no "barking" in this building and no crowds congregate at any particular place, although there are articles for sale at many booths. The only suggestion of a crowd is occasionally before the booth where a low-voiced orator tells of the wonders of a patent top, and spins it as an accompaniment of the story.

The Singer Sewing Machine company has an exhibit made up of machinery exclusively, which is one of the most interesting at the fair. It includes nearly 20 sorts of sewing machines, made for all imaginable varieties of sewing.

Woodard & Clark have a small plant in operation to show the method of manufacturing trusses, supporters and bandages, and the weaving machine attracts much attention.

Two Suits Against Albany Dairyman. (Special Dispatch to The Journal.) Albany, Or., Sept. 2.—Two suits were yesterday afternoon commenced against E. C. Smith, a local dairyman.

Cook Stoves and Adding Machines. The contents of the building include nearly every commercial product made in America, from a cook stove to an intricate machine for adding up long columns of figures in a banker's counting room.

The Portland furniture dealers and manufacturers have installed some magnificent exhibits. The Oregon Furniture Manufacturing company has a display of its products that is equal to anything shown at exhibitions by the great furniture factories of the east.

The Railway List company shows machinery and methods of modern railway construction, including the steam shovel and similar equipment. The Pacific Coast Rubber company displays an interesting lot of metallic, rubber and cotton tubing, belting and other rubber goods.

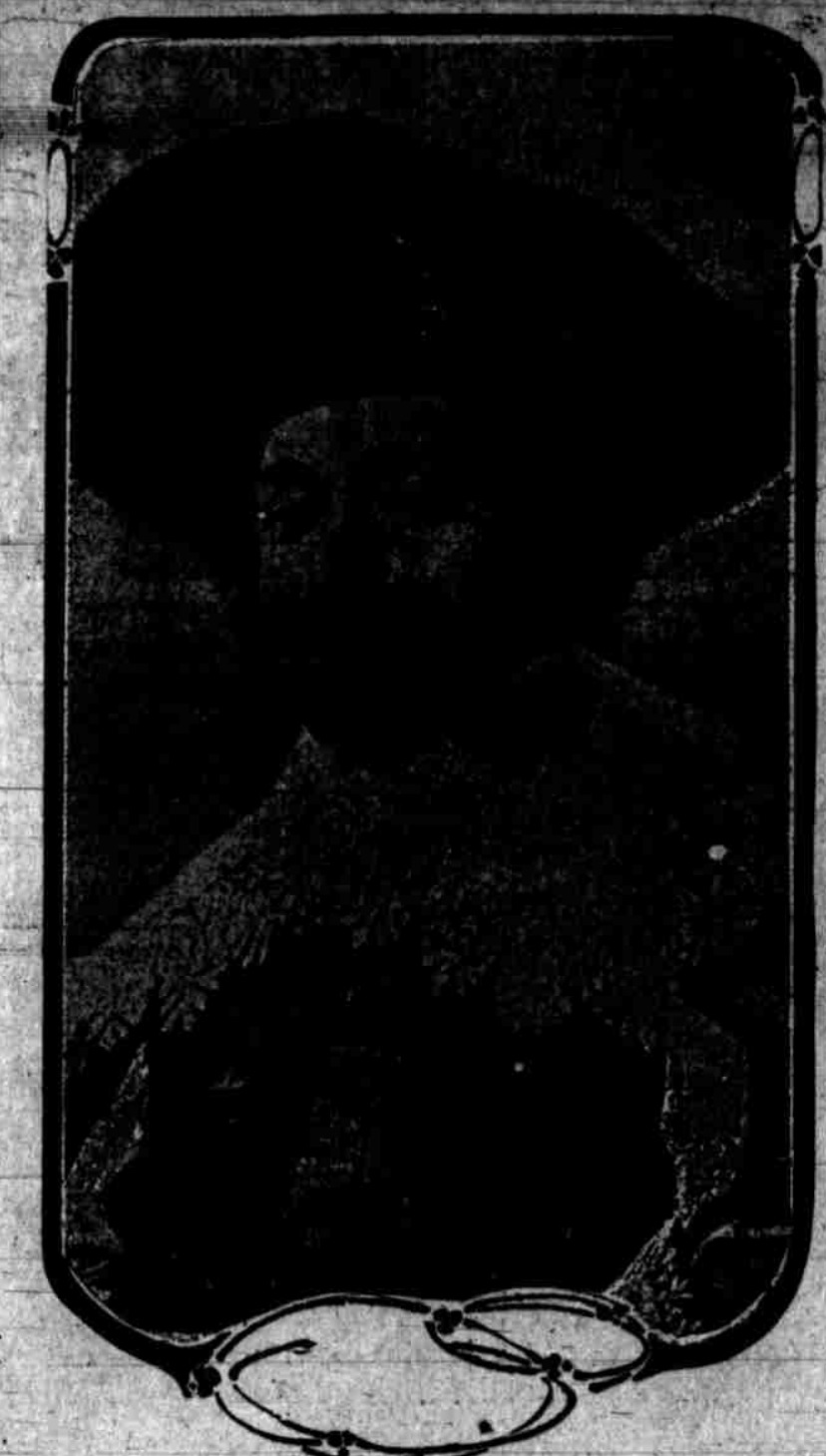
Eastern and southern people pause in wonderment and admiration before the displays of Portland furs. The firms of H. Lebes & Co. and the Silverfield Fur company have outdone all previous efforts in the Pacific northwest.

There are other interesting exhibits, both of machinery and commercial products, and many displays of manufactured goods. A novel machine is shown by a California inventor who transfers the grain of any wood to lumber of another variety by means of two rotary cylinders.

Woodard & Clark have a small plant in operation to show the method of manufacturing trusses, supporters and bandages, and the weaving machine attracts much attention.

Two Suits Against Albany Dairyman. (Special Dispatch to The Journal.) Albany, Or., Sept. 2.—Two suits were yesterday afternoon commenced against E. C. Smith, a local dairyman.

Cook Stoves and Adding Machines. The contents of the building include nearly every commercial product made in America, from a cook stove to an intricate machine for adding up long columns of figures in a banker's counting room.



Photograph of the Famous Painting by Franz Hals, "Portrait of a Cavalier," Stolen From The Hague Gallery.

COMBINE TO FIGHT THEATRE TRUST

Extensive Dramatic Interests Gathered Together by Shubert Brothers.

MERCER EFFECTED OF ANTI-TRUST INTERESTS

Corporation Formed With Million and a Half Capital to Fight the Octopus Upon Its Own Grounds—Belasco Lends Aid.

PARTY KILLS SIXTEEN DEER AND THREE BEAR

(Special Dispatch to The Journal.) Roseburg, Or., Sept. 2.—The party consisting of Attorney-General A. M. Crawford and son, J. W. Crawford, State Printer J. E. Whitney, and E. C. Patton of Salem, Professor W. H. McCall of Eugene, and Neil O. Watson of Marshfield, returned today from a trip to Crater lake.

TYPHOON SWEEPS CHINA AND SHANGHAI IS FLOODED

(Journal Special Service.) Shanghai, Sept. 2.—A typhoon last night swept the coast of China. This city is flooded this morning, the water rising to a height of three feet.

THOROUGH SHAKEUP OF CHICAGO POLICE FORCE

(Journal Special Service.) Chicago, Sept. 2.—A thorough shakeup of the police department has been made by Chief Collins in a general order affecting 510 commanding and subordinate officials in the department.

THE SWITZERLAND OF AMERICA

Columbia River mountains, peaks, rocks, ledges, canyons, gorges, waterfalls, lakes, forests, meadows and forests seen daily from the decks of the

Chas. R. Spencer

Leaving foot of Washington street at 7 a. m. (except Friday and Sunday) for The Dalles and return. Passengers and freight at lowest rates.

SUNDAY EXCURSIONS TO THE FOUR MILLION DOLLAR CASCADE LOOKS AND RETURN

Leaving foot of Washington street at 9 a. m., arriving home at 9 p. m. ROUND TRIP TICKETS \$1.00

TEDDY ENTERTAINS FRIEND FROM SOUTH DAKOTA

Sundown Bus Makes Visit to Oyster Bay and Talks Over Old Times.

(Journal Special Service.) Chicago, Sept. 2.—"Sundown Bus," the original stagecoach driver of Spearfish canyon, South Dakota, and a friend of President Roosevelt for many years, has arrived here after a visit to the president at Oyster Bay.

ROUND TRIP DAILY TO ASTORIA

Excursion steamer Telegraph makes round-trip daily (except Friday). Departs from Alder street dock 7:30 a. m. From Astoria 2 p. m. Arriving Portland 1:30 p. m. Sundays leaves Portland 8 a. m. Arrives Astoria 9 p. m.

HONOLULU EXCURSION

The S. S. Alameda sails from San Francisco September 9. Reduced rates for this trip, \$125, there and back. Get particulars at office, 653 Market street, San Francisco.

TRUSTEES ESCAPE FROM PRISON

(Special Dispatch to The Journal.) Walla Walla, Wash., Sept. 2.—Two trustees, Edward Long, and Bert Taylor, escaped from the penitentiary night before last. One of them was recaptured a few hours later and a posse of six are supposed to have Taylor surrounded five miles west of here.

COUPONS ARE GIVEN AS FOLLOWS:

FIRST—Single coupons, cut from the daily paper, good for one vote. Subscriptions in the Evening Journal and Sunday Morning Journal three months, \$1.50, a special coupon of 100 votes (paid in advance). Subscriptions to Evening and Sunday Morning Journal six months, \$2.75, a special coupon of 200 votes (paid in advance). Subscriptions to the Evening and Sunday Morning Journal 12 months, \$5.00, a special coupon of 400 votes (paid in advance). Subscriptions to the Evening and Sunday Morning Journal 24 months, \$9.00, a special coupon of 800 votes (paid in advance). Subscriptions to the Evening and Sunday Morning Journal 36 months, \$12.00, a special coupon of 1,200 votes (paid in advance). Semi-weekly Journal, \$1.00, a special coupon of 100 votes (paid in advance).

WHAT TO SEE IN HAWAII AT THE JOURNAL'S EXPENSE

HONOLULU, the capital of the young territory, is in many ways the most beautiful of tropical cities. THE NUUANU PALI, a cliff with one thousand feet face, at the gap in the backbone ridge of the Islands of Oahu is one of the natural wonders of the world. PEARL HARBOR, the wonderful enclosed locks, where the United States will build its most extensive Pacific naval station, is but a half hour from Honolulu.

HERE IS THE THEY STAND

CONDITIONS Of The Journal's Honolulu Tour CONTEST

YORK—Any young lady over 18 years of age may be nominated at any time on blanks provided by The Journal, with the endorsement of two well-known citizens of the district in which she resides. SECOND—Three judges agreeable to the contest shall be selected by the Journal. Officially announce the winner in each district, one young lady to be chosen from each district. THIRD—As in other sections, each district shall vote separately. The vote in one cannot affect the other. Matters properly concerning the district will be settled by the wishes of the majority. The winner shall have the right to name a proxy if unable to attend herself.

HEADQUARTERS AND VOTING PLACES:

First District—Baltimore and Clackamas counties. Voting place, Coupon Department of The Journal office. Second District—Umatilla, Wasilla and Walla counties. Third District—Wasco, Sherman, Gilliam, Morrow, Wheeler and Crook counties. Fourth District—Baker, Grant, Harney and Malheur counties. Fifth District—Columbia and Clatsop counties. Oregon; Klickitat, Coville, Clark, Pacific, Wallowa and Wasco counties, Washington. Sixth District—Marion, Lane and Linn counties. Seventh District—Washington, Tillamook, Yamhill, Benton, Polk and Lincoln counties. Eighth District—Douglas, Coos, Curry, Josephine, Jackson, Klamath and Linn counties.

Table listing candidates for various districts (District No. 1 to District No. 8) and their total votes. Includes names like Miss Minnie S. Phillips, Miss Laura R. R. R., Miss Sadie Winterman, etc.

HEALTH is the Most Important. No one can tell good baking powder from bad merely by the appearance; The price is some guide, but not an infallible one; Some cheap brands may raise the dough, yet contain unwholesome ingredients. There is one safe, sure way, i. e., to follow the recommendations of the U. S. GOVERNMENT ANALYSTS, THE HIGHEST AUTHORITIES ON HYGIENE THROUGHOUT THE WORLD, THE BEST HOUSEKEEPERS EVERYWHERE—ROYAL BAKING POWDER ABSOLUTELY PURE

Oregon Journal Coupon—Free Hawaiian Trip. Honolulu, Hawaiian Islands. Counting is done on Mondays, Wednesdays and Fridays and the standing of the candidates announced to the public the following day.