

WOMEN OF THE SALEM PARTY AT THE EXPOSITION.



—Photograph by Kiser Photographic Co.

COPLAND'S SALARY STILL IN DOUBT

Council's Action in Allowing His Aim Said to Be Contrary to City Charter.

CIVIL SERVICE BOARD ALONE CAN DECIDE

Commission Refuses to Accept Copland and Its Word is Said to Be Final.

service regulations. The commission refused to grant the salary of Copland because he had failed in the examinations for the position and therefore was not entitled to have his name certified for appointment. Worslein proceeded to retain Copland in face of opposition of the commission and paid the salary of the clerk out of private funds.

Wednesday the council appropriated \$700 to remunerate Copland for his services without a dissenting voice, but in all probability the mayor and auditor may not allow the money to be paid. The mayor may refuse to sign the warrant and City Auditor Devlin may refuse to recognize and allow the money to be paid although the mayor should sign the warrant. According to the city charter the councilmen or the mayor or auditor could be held liable for the money thus paid if anybody raised an objection.

It is said that the only legal way for Copland to receive his salary would be to mandamus the civil service commission to certify his name to the auditor as a regular employee.

CRUISERS IN HARBOR

(Continued from Page One.)

Her speed is 15 knots an hour, which is developed by two sets of triple expansion engines turning two screws. She was built in 1885 by the Roches at Philadelphia. In the Spanish war, the Chicago was laid up, and Admiral Goodrich commanded the St. Louis.

The Boston is a protected cruiser, carrying 289 men and officers, speed 15 1/2 knots an hour, developing 4,030 horse-power and mounting two 8-inch guns, six 6-inch, two 3-pounders, two 2-pounders and two machine guns. She was built in 1884 and was in the battle of Manila.

The Perry, torpedo-boat destroyer, is one of the greyhounds of the navy, running 28 knots an hour, with 2,000 horse-power, two 14-pound guns and two torpedo tubes.

Rear Admiral Goodrich's personal staff consists of Flag Lieutenant Leonard Rundlett, Sargent and Ensign Caspar Goodrich, the admiral's son. The fleet staff is Pay Inspector John Slaughter, Carpenter, fleet paymaster; Medical Inspector David Oldham Lewis, fleet surgeon; Lieutenant-Commander Frank W. Bartlett, fleet engineer; Lieutenant Roscoe Charles Moody, ordnance officer, and Captain William Hopkins, fleet marine officer.

The complete roster of the officers of the fleet who are here is: Flagship Chicago—Captain Edwin King

Moore, Lieutenant-Commander Frank W. Bartlett, Lieutenant-Commander William Porter White, Lieutenant-Commander Alexander Seaman Halstead, Lieutenant Roscoe Charles Moody, Lieutenant Ernest Frederick Eckhardt, Ensign John William Schofield, Ensign Guy W. Stuart, Ensign, Midshipman Charles Carroll Soule, Midshipman Earnest Arthur Swanson, Midshipman, Robert Leo Irvine, Midshipman Stanford Caldwell, Midshipman, Midshipman Ernest Burr, Midshipman, John Enoch Popd, Ensign James A. Campbell, Midshipman Frank Nathaniel Eklund, Medical Inspector David Oldham Lewis, Assistant Surgeon Earle Mason Brown, Pay Inspector John Slaughter, Carpenter, Captain Arthur William Stone, Captain (U. S. M. C.) William Hopkins, Gunner J. Hill, Acting Carpenter T. B. Casey, Acting Boat-swain J. Glass, Warrant Machinist, S. S. S. Acting Warrant Machinist, T. D. Healy, Pay Clerk B. L. Lanford, Pay Clerk (Fleet) F. E. Shute.

The Cruiser Boston—Commander Kosuth Niles, Lieutenant Charles Augustine Brand, Lieutenant Percy Napier Olmsted, Lieutenant Orin Gould Murfin, Lieutenant William Daniel Leahy, Ensign Charles Seymour Freeman, Midshipman John Arwine, Assistant Paymaster Edward Stuart, Stalaker, Assistant Surgeon David Bell Kerr, Second Lieutenant (U. S. M. C.) William Thomas Hoadley, Acting Boatswain J. Leckie, Acting Gunner A. Barker, Acting Carpenter A. W. Jones, Warrant Machinist J. Wilson, Warrant Machinist, H. Smith, Pay Clerk E. W. Merideth. Destroyer Perry—Lieutenant Herman Schofield, Ensign Wallace Berthoff.

Women With the Fleet. Accompanying the fleet also are Mrs. Lewis and Miss Lewis, wife and daughter of Fleet Surgeon Lewis; Mrs. Moody, wife of Lieutenant Moody; Mrs. White, wife of Lieutenant-Commander White; Mrs. Niles, wife of Commander Niles; Mrs. Brand, wife of Lieutenant Brand; Mrs. Leahy, wife of Lieutenant Leahy; and Mrs. Schofield, wife of Lieutenant Schofield. They will be elaborately entertained during the visit of the fleet.

The warships will be ready to receive visitors tomorrow at 10 o'clock, and thereafter from 1 to 5 o'clock each afternoon any one may go aboard.

Today, Ensign Goodrich visited the exposition offices on the grounds and, with Mr. Hardee, planned the maneuvers that are expected to afford the people much enjoyment in the coming days. A special gate has been prepared for the admission of the officers and men, who will be extended all possible courtesies. The officers and their wives will be present at several formal functions.

Only when the governor of the state visits the warships will salutes be fired. The naval regulations permit the firing of personal salutes, so that the people will be permitted to hear the booming of big guns while the fleet is here.

NEW OFFICERS CHOSEN BY EPWORTH LEAGUERS

(Special Dispatch to the Journal.) Baker City, Or., June 15.—The Epworth league, which was in session and completed its labors here today for the West Boise district, which is composed of the territory west of Boise in Idaho and the territory in eastern Oregon as far north as La Grande and south to Baker City, divided the West Boise district and made two districts. One to continue as the West Boise district while the other is to be known as the La Grande district, each district covering the territory within its respective state.

The West Boise district elected the following officers for the ensuing year: President, Rev. C. L. Bent, Huntington; secretary and treasurer, C. L. Sloan, Boise; junior superintendent, Mrs. J. L. Kendall, Vale, Oregon.

The La Grande district elected the following: President, E. M. Hill, Baker City; secretary, Ora S. Gates, Baker City; junior superintendent, Mrs. C. F. Wheeler.

ELECTRIC RAILWAY FROM BAKER CITY TO PRAIRIE

(Special Dispatch to the Journal.) Baker City, Or., June 15.—J. W. Bonta again gives out the information that the electric railway line in Baker and Grant counties touching at Prairie City, Baker City and other points will be taken up and organized for the purpose of proceeding at an early date with the building of the much-talked-of road. It will be remembered that a right of way for this line was secured several years ago and its status has been announced periodically since that time.

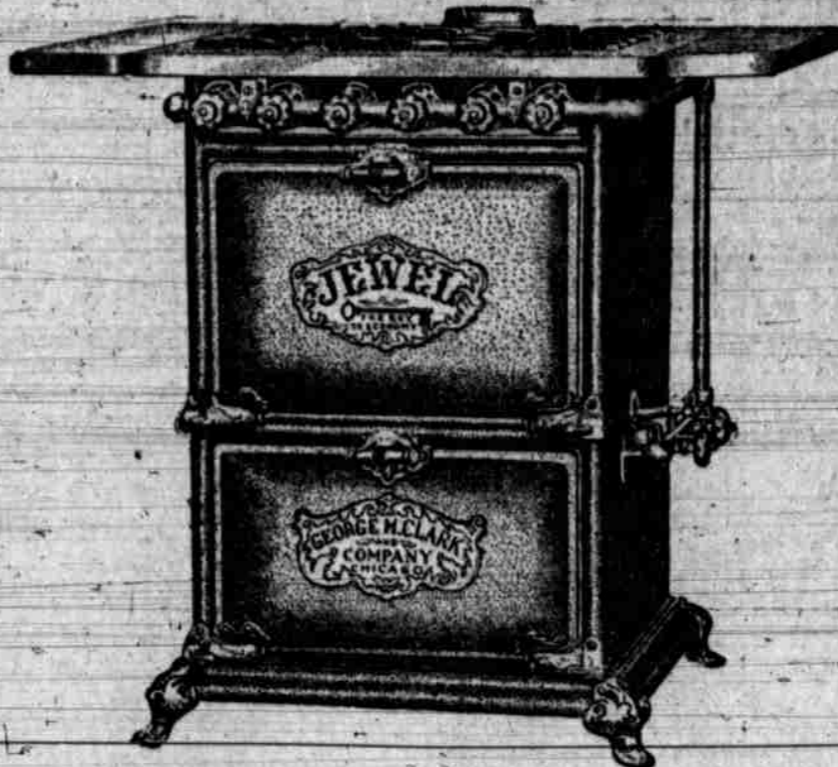
Major Bonta, the promoter, again states that he has raised the funds to build the road. While his statement has been made a number of times by publication the people are still hopeful that the road will be built, and that the last statement is a truthful one.

NORTHERN PACIFIC LETS CONTRACT AT SPOKANE

(Special Dispatch to the Journal.) Spokane, Wash., June 15.—The Northern Pacific Railway company has let a contract for about \$250,000 worth of improvements to its roads. The main line to Yardley is to be double-tracked. The grade between the city and Yardley will also be changed. The new line will swing south from the present line to the extreme south edge of the right of way.

A Good Gas Range

Is Essential in Every Home. If You Use a Gas Range You Will Have No Trouble With Cooking

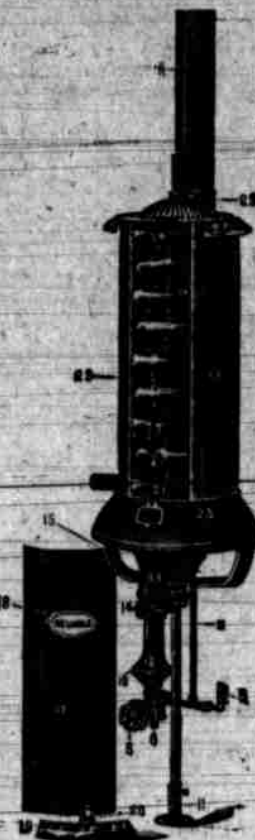


The more cooking you have to do the more you will appreciate a gas range

The Gas Water Heater

Has Solved the Hot Water Question

The plan is as simple as the Gas Range. There is no accumulated heat to make the rooms uncomfortable, and there is no expense except actual cost of use. We will demonstrate this to you at our show rooms at any time, and it won't cost you a cent to see it.



The price of gas water heaters includes installing To any customer now using a gas range we will install a Gas Water Heater for

\$13.50

Order now while we're not rushed--later you may have to wait to have your order filled. "Patience saved is patience earned." You'll find it so

THE PURCHASE PRICE OF A GAS RANGE NOW INCLUDES INSTALLING— THAT IS, FOR THE PURCHASE PRICE WE WILL SET IT UP READY FOR USE, WHICH INCLUDES A RUN OF 40 FEET OF PIPE. ON A CASH SALE OR IF YOU PAY FOR IT WITHIN THIRTY DAYS, WE MAKE YOU A DISCOUNT OF 10 PER CENT. WHERE A FUEL STUB IS ALREADY IN THE KITCHEN AND NO PIPE IS NECESSARY, A DISCOUNT OF 20 PER CENT IS MADE.

Portland Gas Co.

Fifth and Yamhill Streets

The young man's Store



This store is just the place to get the earliest points on what to wear—it's the headquarters. Every new fad can be found here as soon as it is established in New York. Every young man—every man who feels young will appreciate our stock. SEE OUR WINDOW DISPLAY. Today we open a Special lot of

MEN'S SUMMER SUITINGS AT \$14.00

They are worth \$18 and \$20.

PANAMA HATS \$5.00 New Summer Shirts, in white negligee, blues and natural linen shades; also plaids, stripes and figures—\$1, \$1.25, and \$1.50.

LION CLOTHING & Gus Kuhn-Prop.

Everything for Men and Boys

165-165 THIRD STREET, NEAR MORRISON

ONE WEEK OF LIFE LEFT MARY ROGERS

(Continued from Page One.)

said Leon. "She went through and we followed. It was cold and I had on a big overcoat. I spread this out on the ground and all three of us sat down. We were only a few feet from the edge of the river."

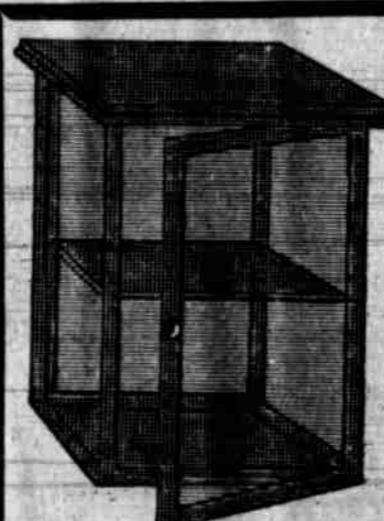
"May said she had a new trick with a rope. "He laughed, May laughed, too, and drew out a piece of clothline. Then she said she'd bet she could tie me so that I couldn't get loose. "I'll bet you can't," I said. "She tied my hands loosely and I

broke away. She tried it again and I broke away again. "I said, "Try it on him," I said. "I'll bet you can't tie me," said Rogers. "He was as strong as an ox. May tied him and tried to tie him tight, but he just gave a heave and broke away. She tried it a second time and he broke loose without any trouble. She was getting worried. She tried it a third time, and when he broke loose again I saw that she couldn't tie him. "Let me do it," I told her. "I took the rope—a piece of clothesline. I said to Rogers: "Kneel down and put your hands behind you." "He thought it was fun and knelt down. I tied his hands behind him and he struggled, but could not get loose. His back was toward May. "I'll bet you can't," I said. "She tied my hands loosely and I

the vial of chloroform and the handkerchief from her bosom. She poured a few drops on her handkerchief—not very much—and put her arms around his neck. "Suddenly she drew his head back in her lap. The move threw him on his hands, which were behind him, so he was doubly helpless. Then she put the handkerchief to his nose. He sputtered. Suddenly she emptied the vial on the handkerchief, completely saturating it. He began to struggle. "May, what does this mean?" he said, heaving his body. "What does it mean?" "Jump on his legs," she said. "I jumped on his legs to hold him. May had him gripped around the neck and pressed the handkerchief against his nose. His struggles were terrible. He threw me off as if I had been a kitten. He got one hand free and used it to help himself.

"But May clung to him and never once did the handkerchief get away from his nose. She had the grip of a tigress. He struggled and flung himself and her over the ground, and every time I came near him a heave of his legs or his free arm would throw me off. "While he struggled, his breath was deeper. Suddenly he grew more quiet, and in a moment he was limp. May clung to him, even after he was quiet, pressing the chloroform-soaked handkerchief down over his face. When all was over she got up."

Explorer Killed. (Journal Special Service.) Vienna, June 15.—Major Herman Von Wissman, the noted African explorer, was killed today, while hunting near Lisenby by the accidental discharge of a gun.



59c

SATURDAY SPECIAL SALE

FLY EXCLUDERS AND MEAT SAFES

at the price of manufacture; it will not only save you money, but its sanitary convenience is great. Call and examine them before you buy.

ALL MAIL ORDERS FOR FURNITURE AND FURNISHINGS WILL RECEIVE OUR PROMPT ATTENTION

POWER'S THE STORE THAT SAVES YOU MONEY

SATURDAY EVENING



ON SALE AFTER 5 O'CLOCK

Warranted steel, 12-inch Butcher Knife, 7-inch blade, bolstered and ferruled handle, made of Cocoa Cola Wood; the like of the article can't be duplicated for less than 75c; it's another evidence of our progressive trade-bringing methods

FIRST AND TAYLOR STREETS